



www.lanagrossa.com

PULLOVER · ABOUT BERLIN SPARKLY

Design 07 from About Berlin Special 02

PULLOVER .

ABOUT BERLIN SPARKLY

Design 07 from About Berlin Special 02



www.lanagrossa.com

Size 36/38 (40/42, 44)

Instructions are given for first size. Figures in parenthesis refer to larger sizes. When only one figure is given, it applies to all sizes.

Materials: 550 (600, 650) g of Lana Grossa **About Berlin Sparkly** (82% cotton, 18% polyester; 120 m/50 g) in Natural/Dark Brown/Charcoal (**col 1**). Size 3 and 7 mm needles; size 3 mm circular needle, 40 cm long; size 5 mm crochet hook; cable needle [cn].

Rib patt: K1, p1.

St st: K on RS, p on WS.

2 selvage sts: At beg of RS row, k1, sl 1 pwise wyib; at end of RS row, work to last 2 sts, sl 1 pwise wyib, k1. At beg of WS row, sl 1 pwise wyif, p1; at end of WS row, work to last 2 sts, p1, sl 1 pwise wyif.

Full-fashion dec: At beg of RS row, 2 selvage sts, k4, skp; at end of RS row, work to last 8 sts, k2tog, k4, 2 selvage sts.

Full-fashion inc 1: On RS rows: M1R, 6 sts in from each edge.

Full-fashion inc 2: On RS rows: M1R, 3 sts in from each edge.

Gauge: 17 sts and 21 rows = 10 x 10 cm in St st on size 7 mm needles.

Back: With size 3 mm needles cast on 82 (90, 98) sts. Work 1 WS row in rib patt. Change to size 7 mm needles. Working 2 selvage sts at each edge, work in St st for 10 rows. Shape sides: Inc row (RS): 2 selvage sts, k19 (20, 21), M1R, place marker [pm], k4, pm, M1R, k32 (38, 44), M1R, pm, k4, pm, M1R, k19 (20, 21) 2 selvage sts = 86 (94, 102) sts. Work 9 rows even. Inc row (RS): 2 selvage sts, * knit to marker, M1R, sl marker [slm], k4, slm, M1R; rep from * once more, work to end = 90 (98, 106) sts. Rep inc row every foll 10th row 2 more times = 98 (106, 114) sts. Work even until piece meas 50 cm from cast-on, ending with a WS row. Inc row (RS): Working full-fashion inc 1, inc 1 st at each end of row = 100 (108, 116) sts. Rep inc row every 6th row 6 times = 112 (120, 128) sts. Work even until piece meas 70 (71, 72) cm from cast-on, ending with a WS row. Shape shoulders and neck: At each shoulder edge, bind off 6 (5, 9) sts once, 7 (8, 8) sts 5 times. At same time, when piece meas 4 cm from beg of shoulder

shaping, shape neck as foll: Next row (RS): Bind off center 24 sts. Working each side separately, bind off 3 sts at each neck edge once. No sts rem.

Front: Work same as for back until piece meas 46 (47, 48) cm from cast-on, ending with a WS row. Next row (RS): Work to 3 sts before center of front, sl 3 sts to cn and hold in back of work, k3, then k3 from cn, work to end of row. Divide work at center for V-neck. Working each side separately and working full-fashion dec, dec 1 st at each neck edge every other RS row 15 times and at same time, when same length as back to shoulders, shape shoulders same as for back. No sts rem.

Sleeves: With size 3 mm needles cast on 55 sts. Working 2 selvage sts at each edge, work in rib patt until piece meas 8 cm from cast-on, increasing 1 st at center of last WS row = 56 sts. Change to size 7 mm needles. Maintaining selvage sts, work in St st and shape sleeve as foll: Working full-fashion inc 2, inc 1 st at each end of 11 (9, 7)th row, then every alt 8th and 10th row 6 times (then every alt 6th and 8th row 8 times / then every 6th row 10 times) = 70 (74, 78) sts. At same time, when piece meas 27 cm from cast-on, work fringe attachment rows as foll: Next row (WS): Work to center 16 sts, k2tog 8 times across center 16 sts, work to end. Next row (RS): Work to center 8 sts, k1f&b in each of next 8 sts, work to end. Work 8 rows even. Next row (WS): Work to center 24 sts, k2tog 12 times across center 24 sts, work to end. Next row (RS): Work to center 12 sts, k1f&b in each of next 12 sts, work to end. Work 8 rows even. Next row (WS): Work to center 40 sts, k2tog 20 times across center 40 sts, work to end. Next row (RS): Work to center 20 sts, k1f&b in each of next 20 sts, work to end. Work even until piece meas 41 cm from cast-on. Bind off all sts.

Finishing: Pin pieces to measurements and block. Sew shoulder seams. Neck trim: With size 3 mm circular needle and RS facing, beginning and ending 6.5 cm up from bottom V, pick up and k 155 sts evenly along right front, back and left front neck edge. Work in rib patt for 3 cm. Bind off all sts in rib. Make and attach fringe: For each fringe, cut 64 cm long strand of yarn. Insert crochet hook into fabric from WS, fold strand in half twice to form a loop, draw loop through fabric, then draw yarn ends through loop and tighten. Attach 40 fringe in fringe attachment rows on each sleeve. Trim fringe to 14 cm. Place markers 20 (21, 22) cm down from shoulders on front and back. Sew on sleeves between markers. Sew side and sleeve seams.

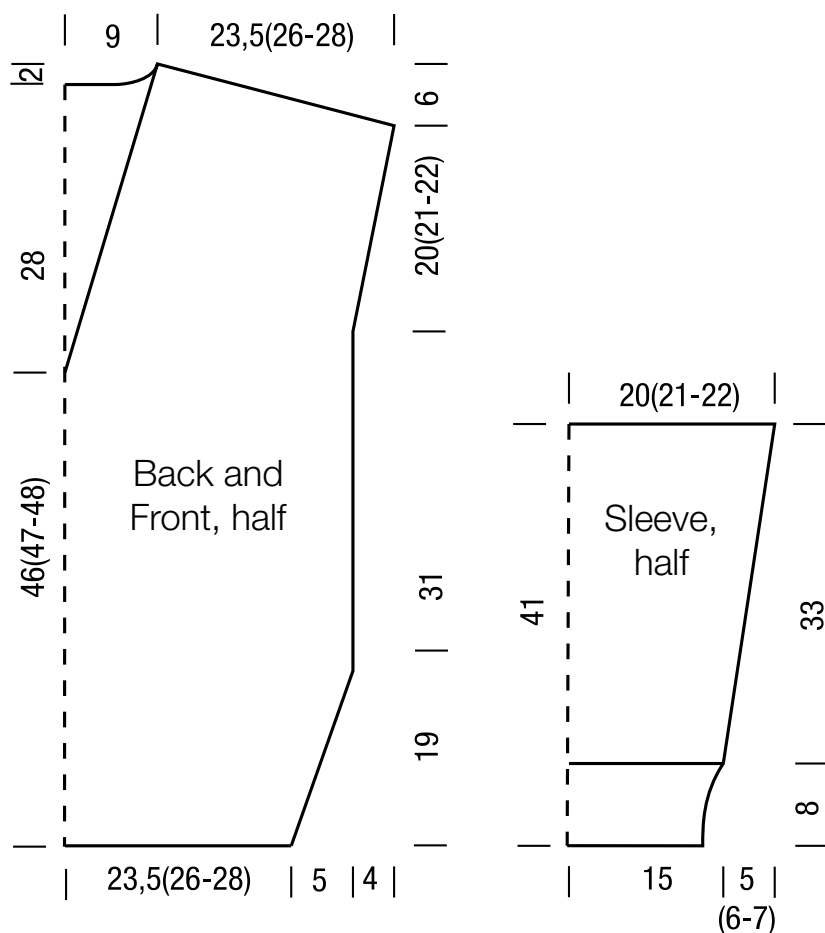
PULLOVER .

ABOUT BERLIN SPARKLY

Design 07 from About Berlin Special 02



www.lanagrossa.com



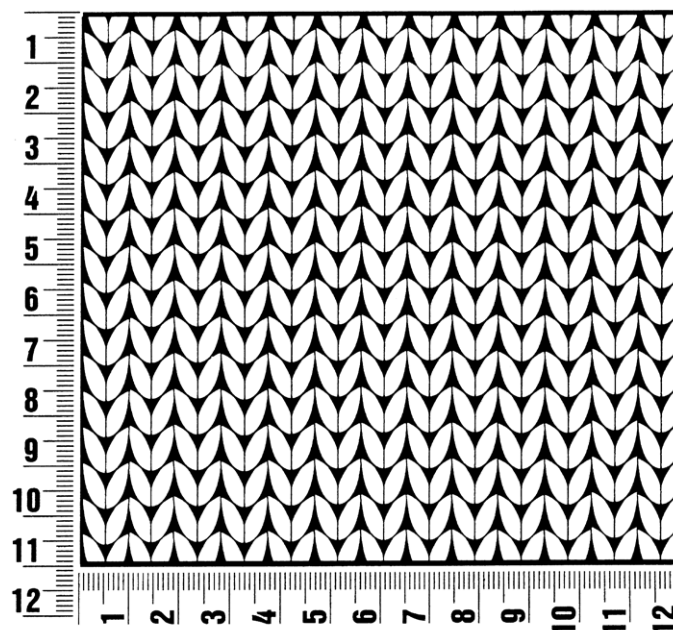
About Berlin Special 02

www.lanagrossa.com

Gauge Swatch

Before you begin ...

...make a gauge swatch. Use the recommended needles, yarns and pattern stitch for your gauge swatch. It should measure approx. 12 cm x 12 cm. Cast-on and bind-off rows, as well as selvage stitches should not be included in the measurement. Pin your swatch and block it as you would the finished pieces of the garment. Count stitches and rows over 10 cm. If your gauge swatch is too small, switch to larger needles. If your gauge swatch is too big, switch to smaller needles.



Abbreviations

beg = begin(ning) · **ch** = chain · **cont** = continue · **dec** = decreas(e)(ing) · **inc** = increas(e)(ing) · **k** = knit · **kwise** = as if to knit
meas = measures · **M1L** = lift strand between sts from front to back and knit this strand through the back loop · **M1R** = lift strand between sts from the back and knit this strand through the front loop · **patt** = pattern · **pm** = place marker · **p** = purl
pwise = as if to purl · **rem** = remain(ing) · **rep** = repeat(s) · **rev St st** = reverse stockinette stitch · **rnd(s)** = round(s) · **RS** = right side · **sc** = single crochet · **skp** = slip 1 stitch as if to knit, knit 1 stitch, pass slipped stitch over knitted stitch · **sk2p** = slip 1 stitch as if to knit, knit 2 together, pass slipped stitch over knitted stitch · **s2kp** = slip 2 stitches as if to knit, k 1 stitch, pass slipped stitches over knitted stitch · **sl** = slip · **st(s)** = stitch(es) · **St st** = stockinette stitch · **tbl** = through the back loop · **tog** = together · **wyib** = with yarn in back of work · **wyif** = with yarn in front of work · **WS** = wrong side · **yo(s)** = yarn over(s)

Publisher's Info

Publisher: Lana Grossa GmbH, Gaimersheim, www.lanagrossa.com

Photographer: Sabrina Theissen