



www.lanagrossa.com

JACKET · ABOUT BERLIN SPARKLY

Design 09 from About Berlin Special 02

JACKET • ABOUT BERLIN SPARKLY

Design 09 from About Berlin Special 02



www.lanagrossa.com

Size 36 (38, 40)

Instructions are given for first size. Figures in parenthesis refer to larger sizes. When only one figure is given, it applies to all sizes.

Materials: 400 (450, 500) g of Lana Grossa **About Berlin Sparkly** (82% cotton, 18% polyester; 120 m/50 g) in Natural/Purple/Yellow-Green/Petrol (**col 12**). Size 3 and 7 mm needles.

Rib patt: K1, p1.

Rev St st: P on RS, k on WS.

16-st front band: Row 1 (RS): [K1, p1] 8 times. Row 2 (WS): [K1, p1] 8 times. Row 3: [Sl 1 pwise wyib, p1] 8 times. Work rows 1 – 3 once, then rep rows 2 and 3.

2 selvage sts: At beg of RS row, k1, sl 1 pwise wyib; at end of RS row, work to last 2 sts, sl 1 pwise wyib, k1. At beg of WS row, sl 1 pwise wyif, p1; at end of WS row, work to last 2 sts, p1, sl 1 pwise wyif.

Full-fashion dec: At beg of RS row, 2 selvage sts, p1, sl 1 pwise wyib, p1, p2tog (p3tog); at end of RS row, work to last 7 (8) sts, p2tog (p3tog), p1, sl 1 pwise wyib, p1, 2 selvage sts – 1 (2) st(s) decreased at each edge.

Gauge: 16 sts and 22 rows = 10 x 10 cm in rev St st on size 7 mm needles.

Back: With size 3 mm needles cast on 75 (83, 89) sts. Next row (WS): Selvage st, p1, * k1, p1; rep from *, end selvage st. Cont in rib patt as established until piece meas 3 cm from cast-on, ending with a WS row. Change to size 7 mm needles. Work in rev St st and shape sides as foll: Inc 1 st at each end of 17th row, then every 12th row 3 times = 83 (91, 97) sts. Work even until piece meas 32 cm from cast-on, ending with a WS row. Shape raglan: Bind off 2 sts at beg of next 2 rows. Working full-fashion dec, dec 2 sts at each end of next 6 (8, 9) RS rows, then dec 1 st at each end of next 16 (16, 17) RS rows = 23 sts and when piece meas 51.5 (53.5, 55.5) cm from cast-on, bind off all sts.

Left front: With size 3 mm needles cast on 45 (49, 53) sts. Next row (WS): Selvage st, k1, * p1, k1; rep from *, end selvage st. Cont in rib patt as established until piece meas 3 cm from cast-on, ending with a WS row. Change to size 7 mm

needles. Next row (RS): Selvage st, work in rev St st over next 26 (30, 34) sts, work 16-st front band, end with 2 selvage sts. Cont in patt as established and work incs for side shaping at right edge same as for back = 49 (53, 57) sts. Work even until piece meas 32 cm from cast-on, ending with a WS row. Shape raglan: Bind off 2 sts at beg of next RS row. Working full-fashion dec, dec 2 sts at beg of next 6 (8, 9) RS rows, then dec 1 st at beg of next 12 (12, 14) RS rows = 23 sts. Work 1 WS row. Dec row (RS): Work to last 19 sts, k2tog, work to end. Cont in patt, rep dec row every foll RS row 3 more times = 19 sts rem for neckband. Cont in patt across neckband sts for 16 cm, then place sts on holder.

Right front: Work same as for left front, reversing all shaping and patt placement.

Pockets: Make 2 alike. With size 7 mm needles cast on 15 sts. Working 2 selvage sts at each edge, work in rev St st and shape pocket as foll: Inc 1 st at each end of every RS row 3 times = 21 sts. Work even until piece meas 7.5 cm from cast-on, ending with a WS row. Maintaining selvage sts, work in rib patt for 2 cm. Bind off all sts in rib.

Left sleeve: With size 3 mm needles cast on 43 sts. Next row (WS): Selvage st, p1, * k1, p1; rep from *, end selvage st. Cont in rib patt as established until piece meas 3 cm from cast-on, ending with a WS row. Change to size 7 mm needles. Work in rev St st and shape sleeve as foll: Inc 1 st at each end of 13 (11, 9)th row, then every 12th row 4 times, then every 10th row once (then every alt 8th and 10th row 7 times / then every alt 6th and 8th row 9 times) = 55 (59, 63) sts. Work even until piece meas 39 cm from cast-on, ending with a WS row. Shape sleeve cap: Bind off 2 sts at beg of next 2 rows. Working full-fashion dec, dec 1 st at each end of next 18 (20, 22) RS rows = 15 sts. Next row (WS): Bind off 2 sts, work to end. Next row (RS): Dec 1 st as established, work to end. Rep last 2 rows 3 more times. Next row (WS): Bind off rem 3 sts.

Right sleeve: Work same as for left sleeve, reversing cap shaping.

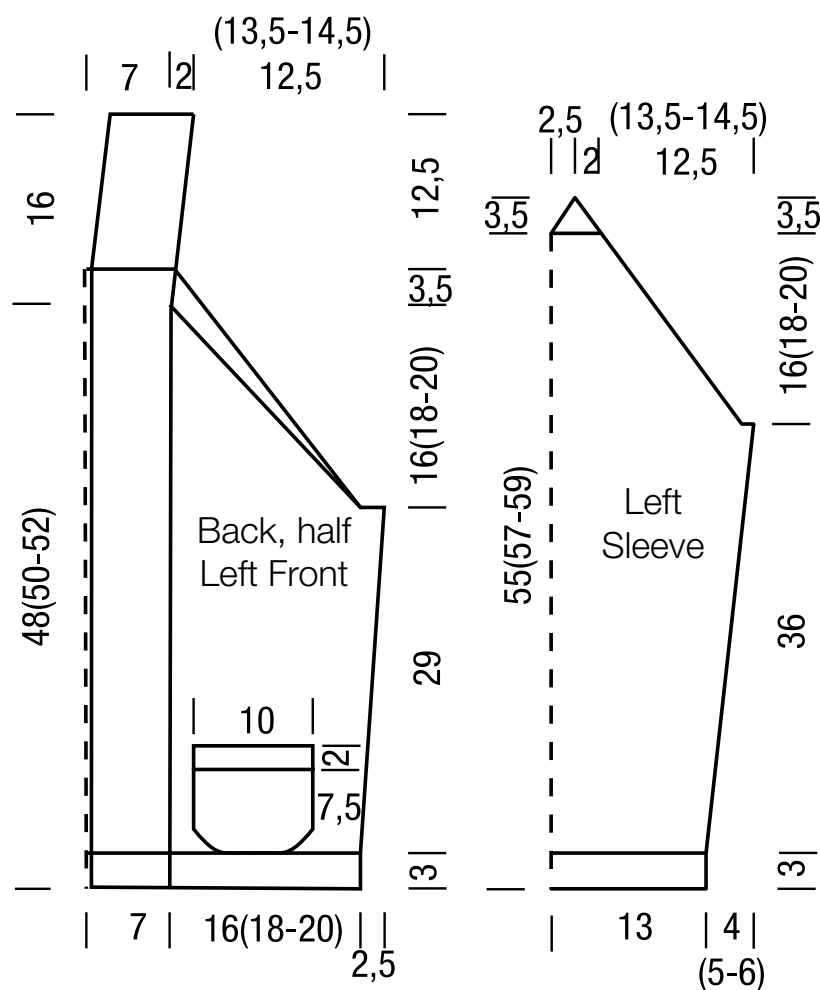
Finishing: Pin pieces to measurements and block. Sew raglan, side and sleeve seams. Join right and left neckband and sew to back neck. Referring to schematic for placement, sew pockets to fronts.

JACKET · ABOUT BERLIN SPARKLY

Design 09 from About Berlin Special 02



www.lanagrossa.com



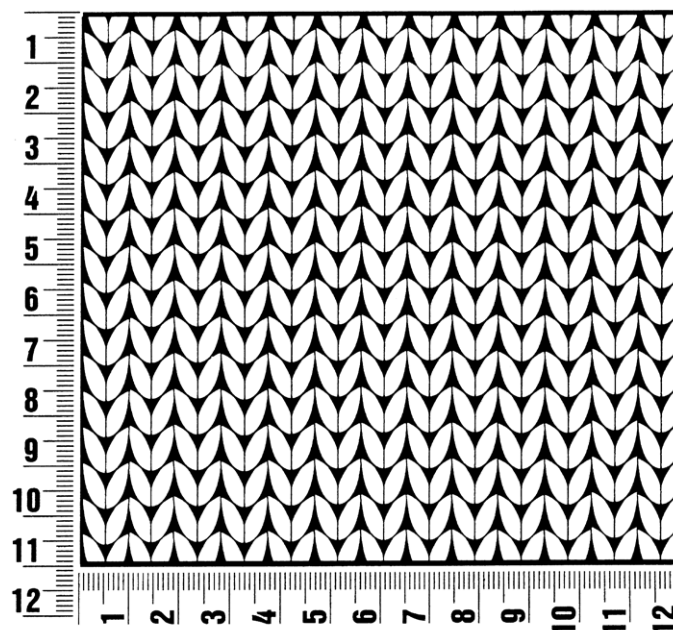
About Berlin Special 02

www.lanagrossa.com

Gauge Swatch

Before you begin ...

...make a gauge swatch. Use the recommended needles, yarns and pattern stitch for your gauge swatch. It should measure approx. 12 cm x 12 cm. Cast-on and bind-off rows, as well as selvage stitches should not be included in the measurement. Pin your swatch and block it as you would the finished pieces of the garment. Count stitches and rows over 10 cm. If your gauge swatch is too small, switch to larger needles. If your gauge swatch is too big, switch to smaller needles.



Abbreviations

beg = begin(ning) · **ch** = chain · **cont** = continue · **dec** = decreas(e)(ing) · **inc** = increas(e)(ing) · **k** = knit · **kwise** = as if to knit
meas = measures · **M1L** = lift strand between sts from front to back and knit this strand through the back loop · **M1R** = lift strand between sts from the back and knit this strand through the front loop · **patt** = pattern · **pm** = place marker · **p** = purl
pwise = as if to purl · **rem** = remain(ing) · **rep** = repeat(s) · **rev St st** = reverse stockinette stitch · **rnd(s)** = round(s) · **RS** = right side · **sc** = single crochet · **skp** = slip 1 stitch as if to knit, knit 1 stitch, pass slipped stitch over knitted stitch · **sk2p** = slip 1 stitch as if to knit, knit 2 together, pass slipped stitch over knitted stitch · **s2kp** = slip 2 stitches as if to knit, k 1 stitch, pass slipped stitches over knitted stitch · **sl** = slip · **st(s)** = stitch(es) · **St st** = stockinette stitch · **tbl** = through the back loop · **tog** = together · **wyib** = with yarn in back of work · **wyif** = with yarn in front of work · **WS** = wrong side · **yo(s)** = yarn over(s)

Publisher's Info

Publisher: Lana Grossa GmbH, Gaimersheim, www.lanagrossa.com

Photographer: Sabrina Theissen