



www.lanagrossa.com

TOP · FOURSEASON

Design 55 from Filati Handstrick 71

TOP · FOURSEASON

Design 55 from Filati Handstrick 71



www.lanagrossa.com

Size 36/38

Materials: 250 g of Lana Grossa **Fourseason** (45% extrafine Merino wool, 40% organic cotton, 15% recycled cashmere; 105 m/50 g) in Violet (**col 14**). Size 5 and 6 mm needles.

Chart patt A/B: Numbers at left edge of chart indicate WS rows, numbers at right edge of chart indicate RS rows. Work to patt rep, work 4 sts between arrows for patt rep, work to end of chart. Work rows 1 – 5 of chart A once, then work rows 1 – 4 of chart B once, then rep rows 3 and 4 of chart B throughout.

Armhole and V-neck shaping: Work according to chart C. Numbers at right edge of chart indicate RS rows; on WS rows, work sts as they appear, work first and last 2 sts as established by chart patt A/B.

Chart shows left half of back/front in its entirety = 49 sts to double arrow. Single arrow points to center of chart.

Full-fashion dec: On RS row, k2tog or p2tog as needed to stay in patt, 2 sts in from each edge.

Gauge: 22 sts and 22 rows = 10 x 10 cm in chart patt B on size 6 mm needles.

Back: With size 5 mm needles cast on 114 sts. Beg with a WS row, work rows 1 – 5 of chart A and piece meas approx. 2 cm from cast-on. Change to size 6 mm needles. Work chart patt B and work A-line shaping as foll: Working full-fashion dec, dec 1 st at each end of 13th row, then every 8th row 7 times = 98 sts. Work even until piece meas approx. 35 cm from cast-on and chart patt B has been worked for 74 rows. Work row 75 of chart C, divide work at center on row 75 and work each side separately from there on. Cast on 1 selvage st at each neck edge. On rows 77, 85, 93, 101 and 109, work additional center decs as foll: Work to 3 sts before center 2 sts, sl 1 pwise wyib, yo, skp, pass slipped st over yo and knitted st, work next 2 sts in patt, sl 2 kwise, yo, k1, pass slipped sts over yo and knitted st, patt to end. Work to end of chart, ending with chart row 130 = 10 sts rem. Bind off all sts.

Front: Work same as for back.

Finishing: Pin pieces to measurements and block. Sew shoulder and side seams, working 1 st in from edge.

TOP · FOURSEASON

Design 55 from Filati Handstrick 71



www.lanagrossa.com

Chart A/B

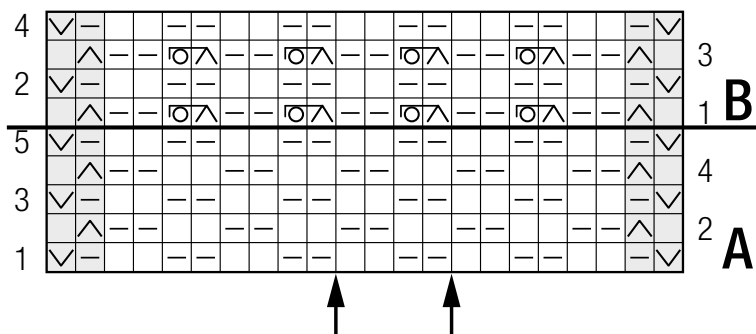
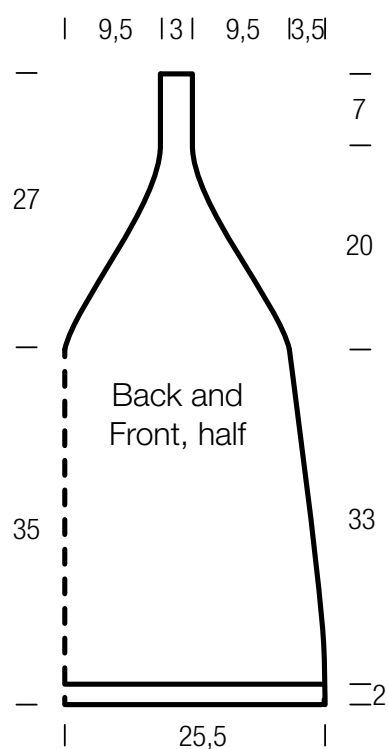


Chart key:

- = k1
- = p1
- = p2tog
- = skp: sl 1 kwise, k1, pass slipped st over knitted st
- = represents "no stitch" (included to keep st count correct)
- = sl 1 pwise wyib
- = sl 1 pwise wyif
- = skip first st on left needle; working in front of skipped st, knit next st, knit skipped st and drop both sts from needle
- = sl 1 pwise wyib, yo, k1, pass slipped st over yo and knitted st

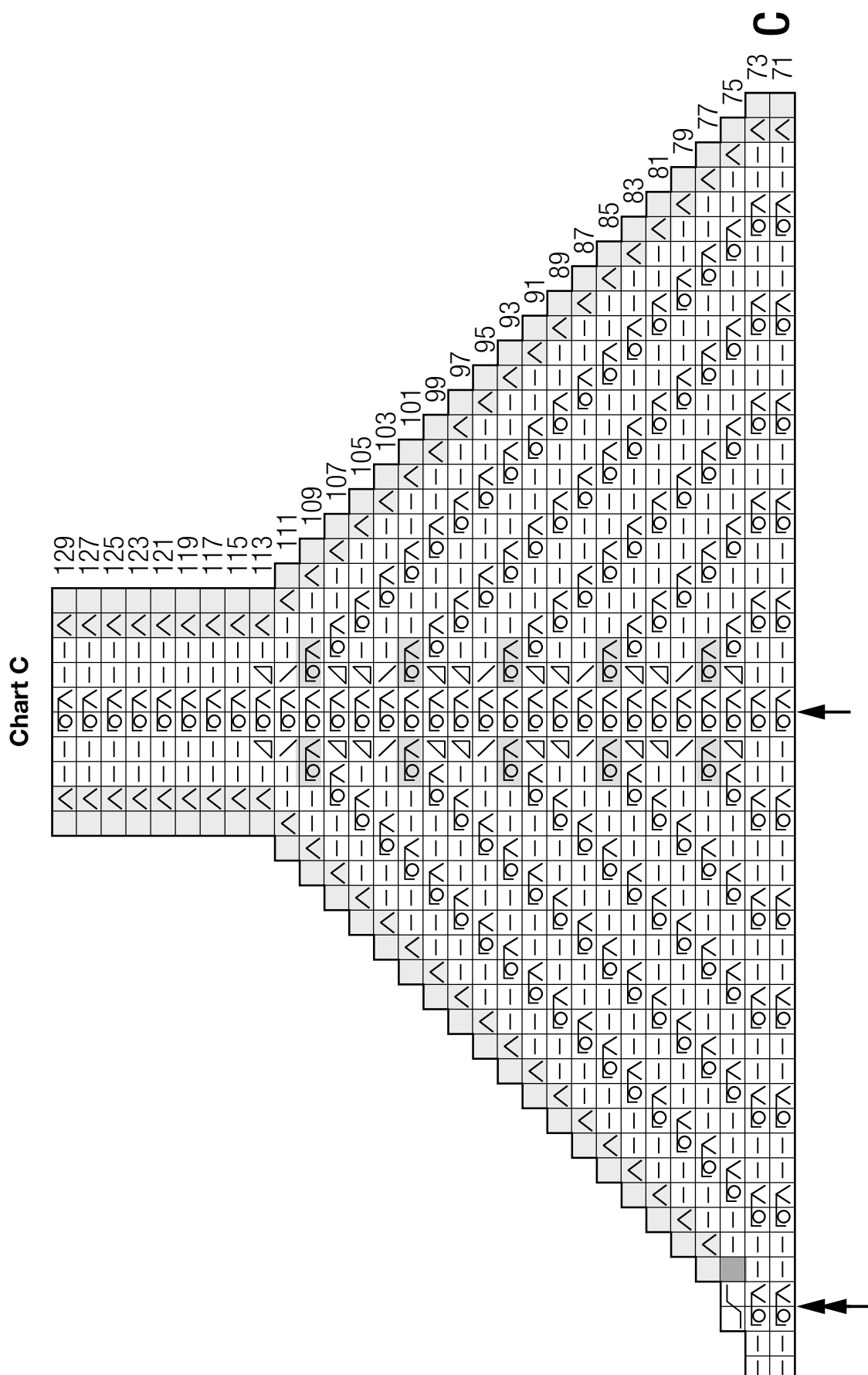


TOP · FOURSEASON

Design 55 from Filati Handstrick 71



www.lanagrossa.com



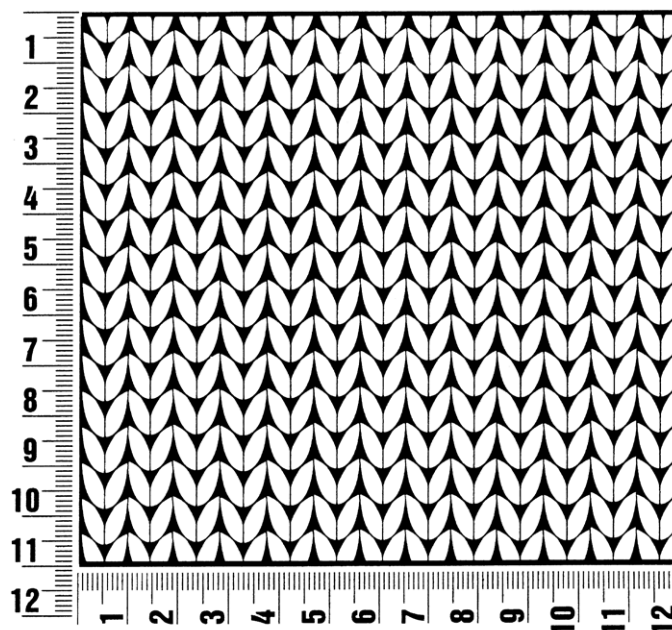
Filati Handstrick 71

www.lanagrossa.com

Gauge Swatch

Before you begin ...

...make a gauge swatch. Use the recommended needles, yarns and pattern stitch for your gauge swatch. It should measure approx. 12 cm x 12 cm. Cast-on and bind-off rows, as well as selvage stitches should not be included in the measurement. Pin your swatch and block it as you would the finished pieces of the garment. Count stitches and rows over 10 cm. If your gauge swatch is too small, switch to larger needles. If your gauge swatch is too big, switch to smaller needles.



Abbreviations

beg = begin(ning) · **ch** = chain · **cont** = continue · **dec** = decreas(e)(ing) · **inc** = increas(e)(ing) · **k** = knit · **kwise** = as if to knit
meas = measures · **M1L** = lift strand between sts from front to back and knit this strand through the back loop · **M1R** = lift strand between sts from the back and knit this strand through the front loop · **patt** = pattern · **pm** = place marker · **p** = purl
pwise = as if to purl · **rem** = remain(ing) · **rep** = repeat(s) · **rev St st** = reverse stockinette stitch · **rnd(s)** = round(s) · **RS** = right side · **sc** = single crochet · **skp** = slip 1 stitch as if to knit, knit 1 stitch, pass slipped stitch over knitted stitch · **sk2p** = slip 1 stitch as if to knit, knit 2 together, pass slipped stitch over knitted stitch · **s2kp** = slip 2 stitches as if to knit, k 1 stitch, pass slipped stitches over knitted stitch · **sl** = slip · **st(s)** = stitch(es) · **St st** = stockinette stitch · **tbl** = through the back loop · **tog** = together · **wyib** = with yarn in back of work · **wyif** = with yarn in front of work · **WS** = wrong side · **yo(s)** = yarn over(s)

Publisher's Info

Publisher: Lana Grossa GmbH, Gaimersheim, www.lanagrossa.com

Photographer: Herbert Dehn, www.herbertdehn.com