



www.lanagrossa.com

TOP · STROMBOLI & CAPRI
Design 51 from Filati Handstrick 71

Design 51 from Filati Handstrick 71



www.lanagrossa.com

Size 36/38 (40/42)

Instructions are given for first size. Figure in parenthesis refers to larger size. When only one figure is given, it applies to both sizes.

Materials: **150 (200) g** of Lana Grossa **Stromboli** (60% cotton, 15% viscose, 15% polyamide, 10% silk; 150 m/50 g in Black-Blue/Grey-Blue **(col 110)** and **100 (150) g** of Lana Grossa **Capri** (55% cotton, 30% polyamide, 15% silk; 150 m/50 g) in Ocean Blue **(col 15)**. Size 5 mm circular needles, 60 and 100 cm long; size 3.5 mm crochet hook.

Selvage sts: On every row: Sl first st kwise, k last st.

St st: K on RS, p on WS; k every rnd.

Drop stitch patt in rnds: Rnd 1: Knit all sts. Rnd 2: * Yo, p1; rep from * around. Rnd 3: Knit all sts, dropping yos and pulling sts up to elongate. Rnd 4: As rnd 2. Rnd 5: As rnd 3. Rnd 6: As rnd 2. Rnd 7: As rnd 3. Rnd 8: Purl all sts. Work rnds 1 – 8 once.

Drop stitch patt in rows: Row 1 (RS): Selvage st, knit to last st, selvage st. Row 2 (WS): Selvage st, * yo, k1; rep from *, end selvage st. Row 3 (RS): Selvage st, knit to last st, dropping yos and pulling sts up to elongate, end selvage st. Row 4 (WS): As row 2. Row 5 (RS): As row 3. Row 6 (WS): As row 2. Row 7 (RS): As row 3. Row 8 (WS): Selvage st, knit to last st, selvage st. Work rows 1 – 8 once.

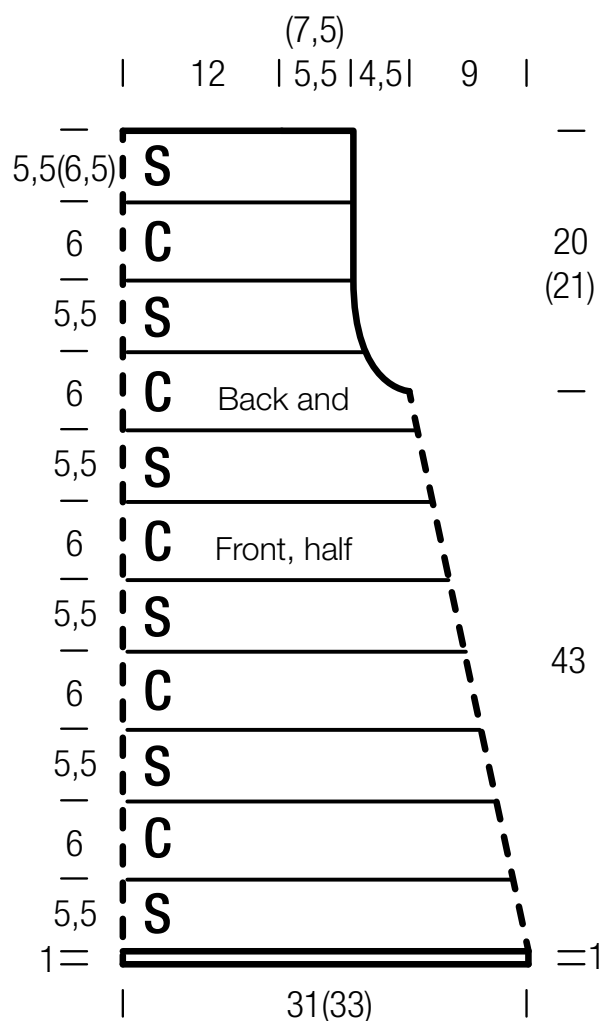
Pattern: Work [5.5 cm = 16 rnds/ rows in St st with Stromboli, 6 cm = 8 rnds/rows in drop st patt with Capri] 5 times. Work remainder in St st with Stromboli.

Gauges: On size 5 mm needles: 17.5 sts and 16 rnds/rows = 10 x 5.5 cm in St st with Stromboli; 17.5 sts and 8 rnds/rows = 10 x 6 cm in drop st patt with Capri.

Back and front: Worked in one piece in the rnd to underarm. With longer size 5 mm circular needle and Stromboli cast on 218 (232) sts. Place beg of rnd marker, place 2nd marker after 109 (116) sts. Join for working in rnds. Purl 1 rnd, knit 1 rnd, purl 1 rnd. Work in patt for 24 rnds, ending with Capri. Cont in patt and work next dec rnd as foll: K1, k2tog, knit to 3 sts before marker, skp, k1, sl marker, k1, k2tog, knit to 3 sts before end of rnd, skp, k1 – 4 sts decreased and 214 (282) sts rem. Cont in patt, rep dec rnd every 5th rnd 3 more times = 202 (216) sts. Cont in patt, rep dec rnd on first, 6th, 11th and 16th rnd of each of next 2 Stromboli sections = 170 (184) sts. Dec rnd: Work in patt, dec 16 sts evenly around = 154 (168) sts. Work even in patt for 2 rnds. Divide for back and front: Next rnd: Patt to 2 sts before end of rnd, bind off 4 sts

and remove marker, patt to 2 sts before next marker, bind off 4 sts and remove marker, patt over next 73 (80) sts for back and turn, leaving rem 73 (80) sts on hold. **Back:** Cont in patt, back and forth in rows across back sts only and shape armholes as foll: Bind off 2 sts at beg of next 2 rows, 1 st at beg of next 8 rows = 61 (68) sts. Work even in patt until armhole meas 20 (21) cm, ending with a WS row. Loosely bind off all sts. **Front:** With WS facing rejoin yarn to 73 (80) front sts on hold. Complete as given for back.

Finishing: Pin piece to measurements and block. Sew shoulder seams, leaving center 24 cm open for neck. **Neck and armhole trim:** With size 3.5 mm crochet hook and Stromboli, work 2 rnds sc around neck edge and around each armhole edge.



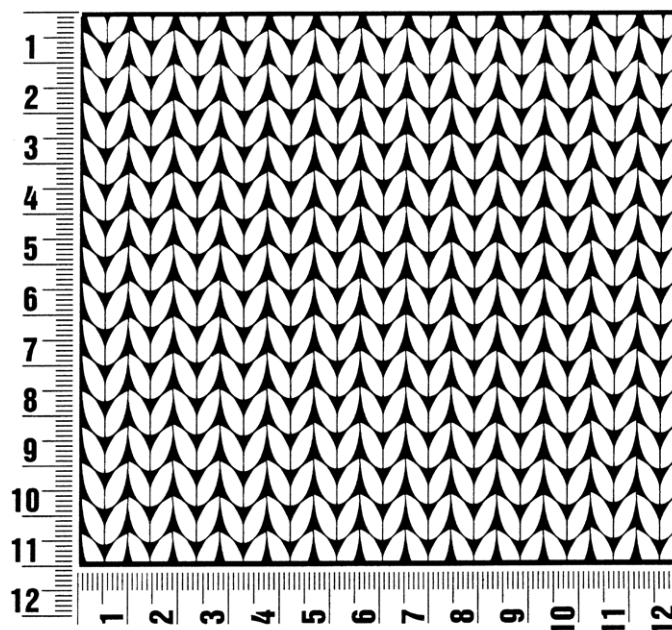
Filati Handstrick 71

www.lanagrossa.com

Gauge Swatch

Before you begin ...

...make a gauge swatch. Use the recommended needles, yarns and pattern stitch for your gauge swatch. It should measure approx. 12 cm x 12 cm. Cast-on and bind-off rows, as well as selvage stitches should not be included in the measurement. Pin your swatch and block it as you would the finished pieces of the garment. Count stitches and rows over 10 cm. If your gauge swatch is too small, switch to larger needles. If your gauge swatch is too big, switch to smaller needles.



Abbreviations

beg = begin(ning) · **ch** = chain · **cont** = continue · **dec** = decreas(e)(ing) · **inc** = increas(e)(ing) · **k** = knit · **kwise** = as if to knit
meas = measures · **M1L** = lift strand between sts from front to back and knit this strand through the back loop · **M1R** = lift strand between sts from the back and knit this strand through the front loop · **patt** = pattern · **pm** = place marker · **p** = purl
pwise = as if to purl · **rem** = remain(ing) · **rep** = repeat(s) · **rev St st** = reverse stockinette stitch · **rnd(s)** = round(s) · **RS** = right side · **sc** = single crochet · **skp** = slip 1 stitch as if to knit, knit 1 stitch, pass slipped stitch over knitted stitch · **sk2p** = slip 1 stitch as if to knit, knit 2 together, pass slipped stitch over knitted stitch · **s2kp** = slip 2 stitches as if to knit, k 1 stitch, pass slipped stitches over knitted stitch · **sl** = slip · **st(s)** = stitch(es) · **St st** = stockinette stitch · **tbl** = through the back loop · **tog** = together · **wyib** = with yarn in back of work · **wyif** = with yarn in front of work · **WS** = wrong side · **yo(s)** = yarn over(s)

Publisher's Info

Publisher: Lana Grossa GmbH, Gaimersheim, www.lanagrossa.com

Photographer: Herbert Dehn, www.herbertdehn.com