



www.lanagrossa.com

**PULLOVER · LINARTE &
ABOUT BERLIN SPARKLY**
Design 10 from Filati Handstrick 71

PULLOVER · LINARTE & ABOUT BERLIN SPARKLY

Design 10 from Filati Handstrick 71



www.lanagrossa.com

Size 36/38 (40/42)

Instructions are given for first size. Figure in parenthesis refers to larger size. When only one figure is given, it applies to both sizes.

Materials: **250 (300) g** of Lana Grossa **Linarte** (40% viscose, 30% cotton, 20% linen, 10% polyamide; 125 m/50 g) in Taupe (**col 4**) and **250 (300) g** of Lana Grossa **About Berlin Sparkly** (82% cotton, 18% polyester; 120 m/50 g) in Beige/Orange/Gold Brown/Dark Grey (**col 5**). Size 5 mm needles; size 4 mm crochet hook.

Rib and eyelet patt: Work according to chart. Numbers at left edge of chart indicate WS rows, numbers at right edge of chart indicate RS rows. Work to patt rep, work 2 sts between arrows for patt rep, work to end of chart. Work rows 1 – 5 once, then rep rows 2 – 5. **Note:** Stitch count varies from row to row. Do not count sts on row 2.

Gauges: On size 5 mm needles: 20.5 sts and 23 rows = 10 x 10 cm in rib and eyelet patt with Linarte; 20.5 sts and 29 rows = 10 x 10 cm in rib and eyelet patt with About Berlin Sparkly.

Back: With size 5 mm needles and Linarte cast on 100 (108) sts. Beg with a WS row, work in rib and eyelet patt according to chart for 29 rows = 12.5 cm. Drop Linarte. With About Berlin Sparkly, cont in patt for 32 rows = 11 cm. Drop About Berlin Sparkly. With Linarte, cont in patt for 32 rows = 14 cm. Drop Linarte. With About Berlin Sparkly, cont in patt for 32 rows = 11 cm. Break About Berlin Sparkly. With Linarte, cont in patt for 32 rows = 11 cm, then rep chart rows 4 and 5 only to end of piece and shape neck on next RS row as foll: Bind off center 42 sts. Working each side separately, bind off 2 sts at each neck edge once, 1 st once. At same

time, when piece meas 0.5 cm from beg of neck shaping, shape shoulders as foll: At each shoulder edge, bind off 13 (15) sts twice. No sts rem.

Front: Work same as for back until 16 rows = 7 cm have been worked with Linarte after last About Berlin Sparkly stripe. Shape neck: Next row (RS): Bind off center 12 sts. Working each side separately, bind off 6 sts at each neck edge once, 4 sts once, 3 sts once, 2 sts once, 1 st 3 times and when a total of 16 rows = 7 cm has been worked from beg of neck shaping, rep chart rows 4 and 5 only to end of piece and at same time, when same length as back to shoulders, shape shoulders same as for back. No sts rem.

Sleeves: With size 5 mm needles and Linarte cast on 46 (52) sts. Note: Yarn changes and sleeve shaping are worked simultaneously; read the following section all the way through before proceeding. Beg with a WS row, work in rib and eyelet patt according to chart for 29 rows = 12.5 cm. Drop Linarte. With About Berlin Sparkly, cont in patt for 32 rows = 11 cm. Drop About Berlin Sparkly. With Linarte, cont in patt for 32 rows = 14 cm. Break Linarte. With About Berlin Sparkly, cont in patt for 32 rows = 11 cm and end of sleeve. At same time, shape sleeve as foll: Inc 1 st at each end of 4th row from cast-on, then every foll 4th row 29 (20) more times, then every 6th row 0 (6) times = 106 sts. Work increased sts into patt. Loosely bind off all sts.

Finishing: Pin pieces to measurements and block. Sew shoulder seams. **Neck edging:** With size 4 mm crochet hook and Linarte, work 1 rnd sc around neck edge. Place markers 25.5 cm down from shoulders on front and back. Sew on sleeves between markers, taking care to match up stripes. Sew side and sleeve seams, taking care to match up stripes.

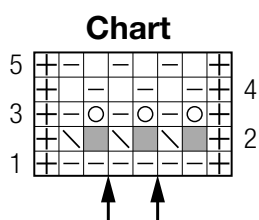
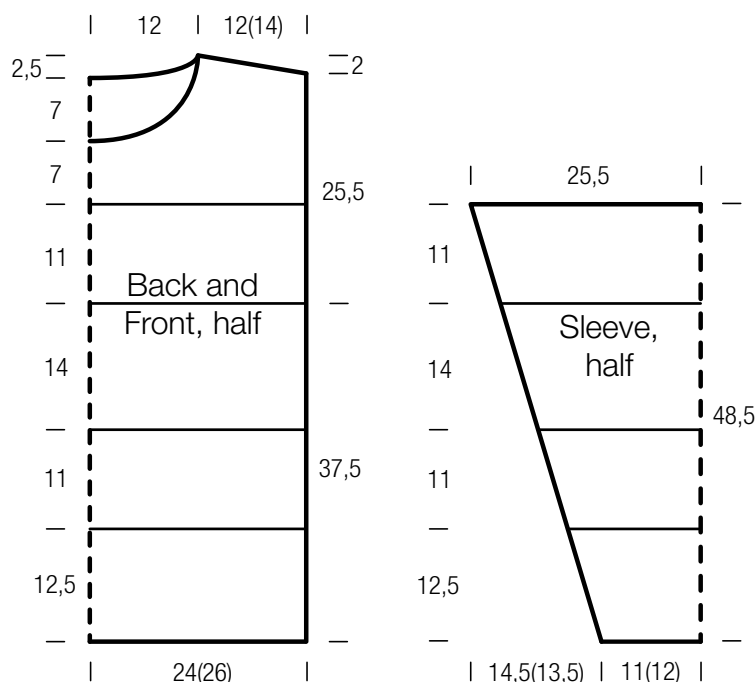


Chart key:

- ⊕ = selvage st
- = k1
- ▢ = p1
- = yo
- ▤ = skp: sl 1 kwise, k1, pass slipped st over knitted st
- = represents "no stitch" (included to keep st count correct)



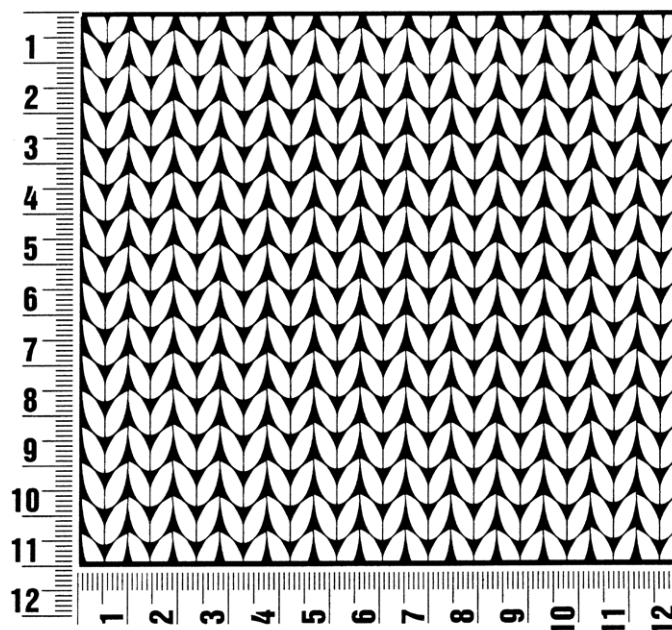
Filati Handstrick 71

www.lanagrossa.com

Gauge Swatch

Before you begin ...

...make a gauge swatch. Use the recommended needles, yarns and pattern stitch for your gauge swatch. It should measure approx. 12 cm x 12 cm. Cast-on and bind-off rows, as well as selvage stitches should not be included in the measurement. Pin your swatch and block it as you would the finished pieces of the garment. Count stitches and rows over 10 cm. If your gauge swatch is too small, switch to larger needles. If your gauge swatch is too big, switch to smaller needles.



Abbreviations

beg = begin(ning) · **ch** = chain · **cont** = continue · **dec** = decreas(e)(ing) · **inc** = increas(e)(ing) · **k** = knit · **kwise** = as if to knit
meas = measures · **M1L** = lift strand between sts from front to back and knit this strand through the back loop · **M1R** = lift strand between sts from the back and knit this strand through the front loop · **patt** = pattern · **pm** = place marker · **p** = purl
pwise = as if to purl · **rem** = remain(ing) · **rep** = repeat(s) · **rev St st** = reverse stockinette stitch · **rnd(s)** = round(s) · **RS** = right side · **sc** = single crochet · **skp** = slip 1 stitch as if to knit, knit 1 stitch, pass slipped stitch over knitted stitch · **sk2p** = slip 1 stitch as if to knit, knit 2 together, pass slipped stitch over knitted stitch · **s2kp** = slip 2 stitches as if to knit, k 1 stitch, pass slipped stitches over knitted stitch · **sl** = slip · **st(s)** = stitch(es) · **St st** = stockinette stitch · **tbl** = through the back loop · **tog** = together · **wyib** = with yarn in back of work · **wyif** = with yarn in front of work · **WS** = wrong side · **yo(s)** = yarn over(s)

Publisher's Info

Publisher: Lana Grossa GmbH, Gaimersheim, www.lanagrossa.com

Photographer: Herbert Dehn, www.herbertdehn.com