



www.lanagrossa.com

SHAWL · STROMBOLI

Design 47 from Filati Handstrick 71

SHAWL · STROMBOLI

Design 47 from Filati Handstrick 71



www.lanagrossa.com

Size approx. 150 x 60 cm

Materials: 500 g of Lana Grossa **Stromboli** (60% cotton, 15% viscose, 15% polyamide, 10% silk; 150 m/50 g in Green/Beige (**col 106**)). Size 3.5 mm circular needle, 80 cm long.

Selvage sts: On every row: K first st, sl last st pwise wyif.

Lace patt: Work according to chart. Numbers at right edge of chart indicate RS rows; on WS rows, work sts as they appear, p all yos. Work to patt rep, work 12 sts between arrows and shown in grey for patt rep, work to end of chart. Work rows 1 – 100 once, then work rows [61 – 100] 9 times, then work rows 101 – 130 once.

Gauge: 25.5 sts and 31.5 rows = 10 x 10 cm in lace patt on size 3.5 mm needles.

Instructions: With size 3.5 mm circular needle cast on 155 sts. Work lace patt according to chart as given above. Bind off all sts in patt.

Finishing: Pin piece to measurements and block.

Chart key:

- ⊞ = selvage st
- = k1
- ▢ = p1
- ⊙ = yo
- ▧ = k2tog
- ▨ = skp: sl 1 kwise, k1, pass
slipped st over knitted st
- ▩ = skp: sl 1 kwise, k2tog, pass
slipped st over knitted st

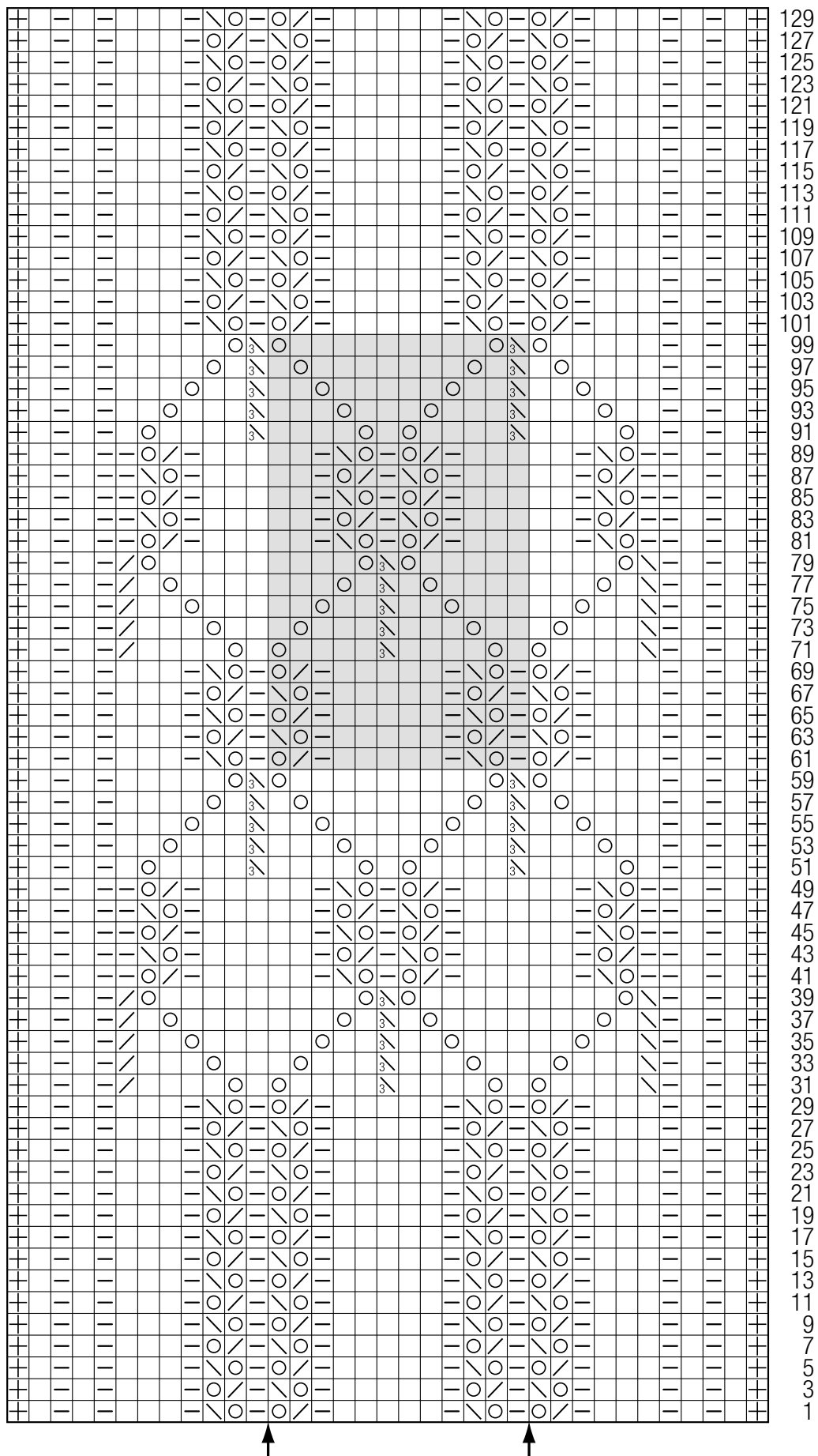
SHAWL · STROMBOLI

Design 47 from Filati Handstrick 71



www.lanagrossa.com

Chart



Filati Handstrick 71

www.lanagrossa.com

Gauge Swatch

Before you begin ...

...make a gauge swatch. Use the recommended needles, yarns and pattern stitch for your gauge swatch. It should measure approx. 12 cm x 12 cm. Cast-on and bind-off rows, as well as selvage stitches should not be included in the measurement. Pin your swatch and block it as you would the finished pieces of the garment. Count stitches and rows over 10 cm. If your gauge swatch is too small, switch to larger needles. If your gauge swatch is too big, switch to smaller needles.



Abbreviations

beg = begin(ning) · **ch** = chain · **cont** = continue · **dec** = decreas(e)(ing) · **inc** = increas(e)(ing) · **k** = knit · **kwise** = as if to knit
meas = measures · **M1L** = lift strand between sts from front to back and knit this strand through the back loop · **M1R** = lift strand between sts from the back and knit this strand through the front loop · **patt** = pattern · **pm** = place marker · **p** = purl
pwise = as if to purl · **rem** = remain(ing) · **rep** = repeat(s) · **rev St st** = reverse stockinette stitch · **rnd(s)** = round(s) · **RS** = right side · **sc** = single crochet · **skp** = slip 1 stitch as if to knit, knit 1 stitch, pass slipped stitch over knitted stitch · **sk2p** = slip 1 stitch as if to knit, knit 2 together, pass slipped stitch over knitted stitch · **s2kp** = slip 2 stitches as if to knit, k 1 stitch, pass slipped stitches over knitted stitch · **sl** = slip · **st(s)** = stitch(es) · **St st** = stockinette stitch · **tbl** = through the back loop · **tog** = together · **wyib** = with yarn in back of work · **wyif** = with yarn in front of work · **WS** = wrong side · **yo(s)** = yarn over(s)

Publisher's Info

Publisher: Lana Grossa GmbH, Gaimersheim, www.lanagrossa.com

Photographer: Herbert Dehn, www.herbertdehn.com