



www.lanagrossa.com

**TOP · ABOUT BERLIN SPARKLY,
ABOUT BERLIN CHILLY &
SILKHAIR LUSO**

Design 45 from Filati Handstrick 71

TOP · ABOUT BERLIN SPARKLY, ABOUT BERLIN CHILLY & SILKHAIR LUSO

Design 45 from Filati Handstrick 71



www.lanagrossa.com

Size 36 – 40 (42/44, 46/48)

Instructions are given for first size. Figures in parenthesis refer to larger sizes. When only one figure is given, it applies to all sizes.

Materials: **150 (200, 250) g** of Lana Grossa **About Berlin Sparkly** (82% cotton, 18% polyester; 120 m/50 g) in Linen/Khaki/Dark Green/Olive (**col 11**), **100 (150, 200) g** of Lana Grossa **About Berlin Chilly** (100% linen; 95 m/50 g) in Grey/Green (**col 3**) and **25 (25, 50) g** of Lana Grossa **Silkhair Lusso** (78% superkid mohair, 14% silk, 4% polyester, 4% polyamide; 210 m/25 g) in Green (**col 911**). Size 8 mm circular needle, 60 cm long; size 7 mm circular needle, 60 cm long; cable needle [cn].

Selvage sts: On every row: K first st, sl last st pwise wyif.

2 selvage sts: At beg of RS row, k1, sl 1 pwise wyib; at end of RS row, work to last 2 sts, sl 1 pwise wyib, k1. At beg of WS row, sl 1 pwise wyif, p1; at end of WS row, work to last 2 sts, p1, sl 1 pwise wyif.

St st: K on RS, p on WS.

Rev St st: P on RS, k on WS.

Stripe patt: Work according to chart. Since 2 RS rows and 2 WS rows are sometimes worked successively, stripe patt should be worked with circular needle. After having worked 1 of the 2 RS [WS] rows, sts are slid to other end of circular needle, where appropriate yarn is ready to be worked. Numbers at left edge of chart indicate WS rows, numbers at right edge of chart indicate RS rows. Letters at right and left edge of chart indicate yarn used: **ABS** = single strand of About Berlin Sparkly, **SL** = 2 strands Silkhair Lusso held tog. Work to patt rep, work 2 sts between arrows for patt rep, work to end of chart. Work rows 1 – 45 once.

Full-fashion inc: M1R, 3 sts in from each edge.

Gauges: On size 8 mm needles: 14 sts and 19.5 rows = 10 x 10 cm in stripe patt; 14 sts and 20 rows = 10 x 10 cm in St st with About Berlin Sparkly and/or About Berlin Chilly.

Back: With size 8 mm circular needle and About Berlin Sparkly cast on 44 (50, 56) sts. Beg with a WS row work rows 1 – 45 of stripe patt chart = 72 (78, 84) sts after row 19 and 78 (84, 90) sts after row 45. Break Silkhair Lusso. Beg with a WS row and maintaining selvage sts as established, work in St st with About Berlin Sparkly and cont to shape sides as foll: Working full-fashion inc, inc 1 st at each end of 4th row worked in St st, then every 8th row 3 times = 86 (92, 98) sts. Work even until 16 cm have been worked in St st, ending with a WS row. Break About Berlin Sparkly. Change to About Berlin Chilly. Next row (RS) and beg of armholes: Work 2 selvage sts, 1 st in rev St st, work in St st to last 3 sts, work 1 st in rev St st, 2 selvage sts. Cont in patt as established until armhole meas 19 (20, 21) cm, ending with a WS row. Shape shoulders: At each shoulder edge, bind off 6 (6, 9) sts once, 6 (7, 7) sts 3 times. Bind off rem 38 sts.

Front: Work same as for back until armhole meas 2 (3, 4) cm, ending with a WS row. Next row (RS): Work 40 (43, 46) sts to center of front, sl next 3 sts to cn and hold in front of work, k3, then k3 from cn, work to end of row. Divide work at center for keyhole = 43 (46, 49) sts each side. Working each side separately and working 3 sts at each neck edge same as at armhole edges, work even until piece meas 15 cm from divide, ending with a WS row. Next row (RS): Work 40 (43, 46) sts to center of front, sl next 3 sts to cn and hold in front of work, k3, then k3 from cn, work to end of row. Work even across all sts until same length as back to shoulders. Shape shoulders same as for back. At same time, on first row of shoulder shaping, shape neck as foll: Bind off center 12 sts. Working each side separately, bind off 5 sts at each neck edge once, 4 sts twice. No sts rem.

Finishing: Pin pieces to measurements and block. Sew shoulder seams. Sew side seams to armholes, leaving bottom 10 cm of side seams open for vents. **Neck trim:** With size 7 mm circular needle and About Berlin Chilly, pick up and k 80 sts evenly around neck edge. Join for working in rnds. Next rnd: Knit and bind off at same time. **Vent trim:** With size 7 mm circular needle and About Berlin Sparkly, pick up and k 35 sts evenly along vent edge. Next row (WS): Purl and bind off at same time.

TOP · ABOUT BERLIN SPARKLY, ABOUT BERLIN CHILLY & SILKHAIR LUSO

Design 45 from Filati Handstrick 71



www.lanagrossa.com

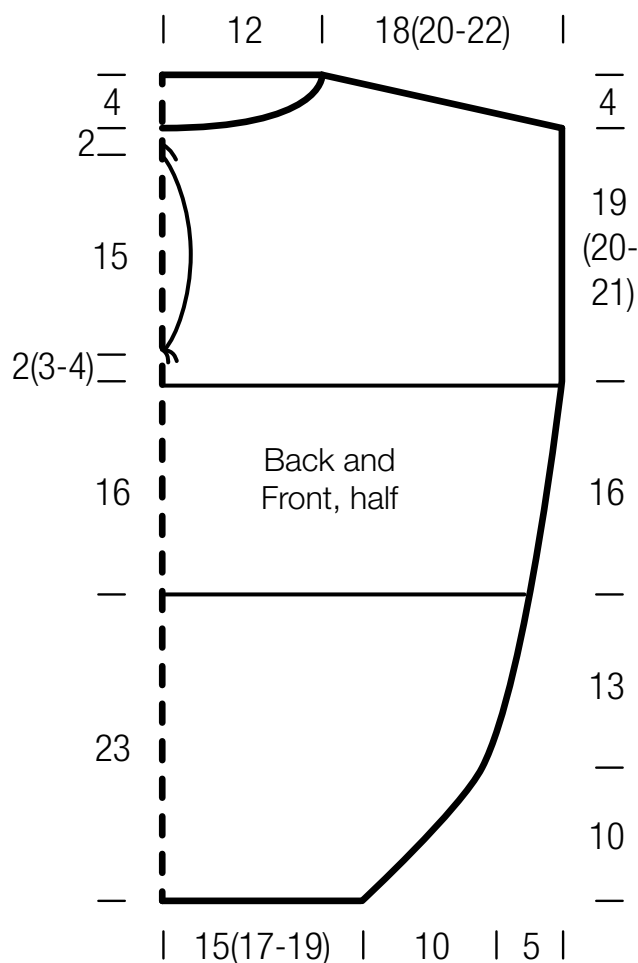


Chart key:

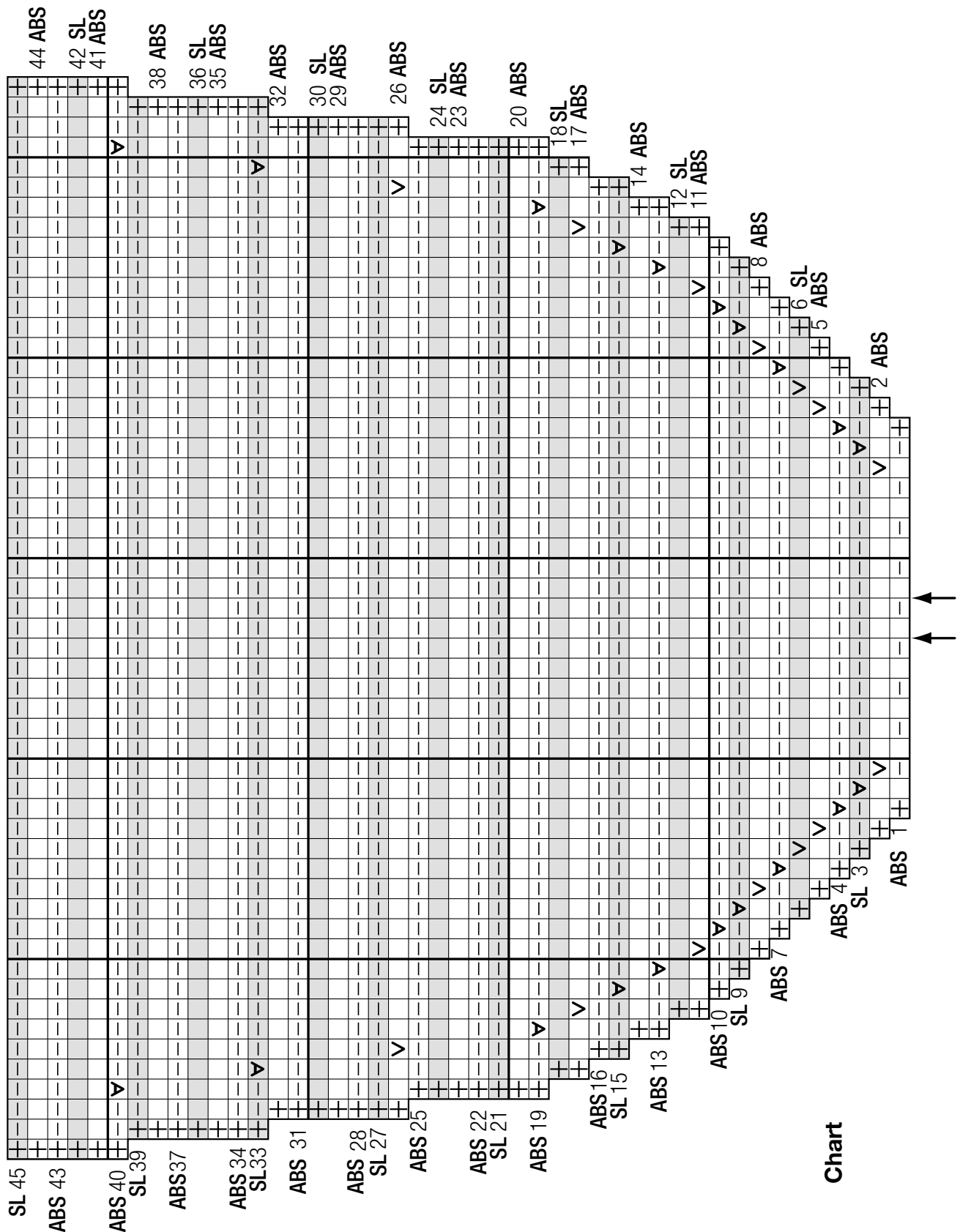
- ⊕ = selvage st
- = k1 with single strand About Berlin Sparkly
- = k1 with 2 strands Silkhair Lusso held tog
- ▢ = p1 with single strand About Berlin Sparkly
- ▣ = p1 with 2 strands Silkhair Lusso held tog
- ▼ = M1R
- ▼ = M1L

TOP · ABOUT BERLIN SPARKLY, ABOUT BERLIN CHILLY & SILKHAIR LUSO

Design 45 from Filati Handstrick 71



www.lanagrossa.com



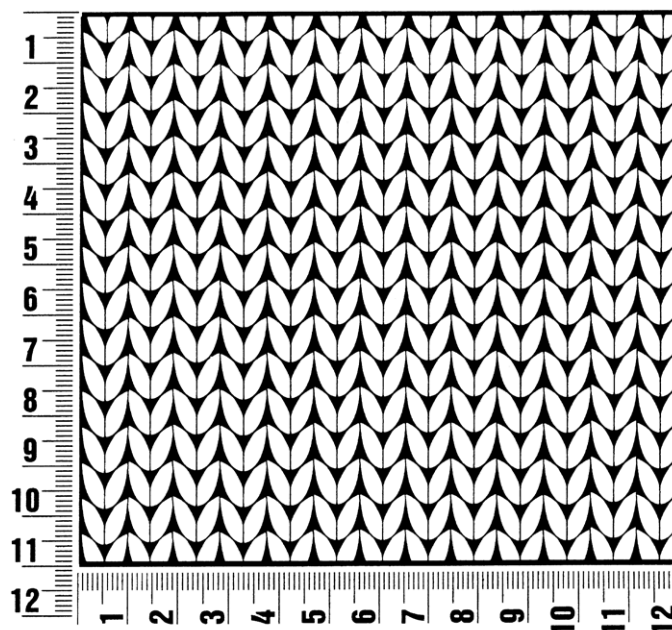
Filati Handstrick 71

www.lanagrossa.com

Gauge Swatch

Before you begin ...

...make a gauge swatch. Use the recommended needles, yarns and pattern stitch for your gauge swatch. It should measure approx. 12 cm x 12 cm. Cast-on and bind-off rows, as well as selvage stitches should not be included in the measurement. Pin your swatch and block it as you would the finished pieces of the garment. Count stitches and rows over 10 cm. If your gauge swatch is too small, switch to larger needles. If your gauge swatch is too big, switch to smaller needles.



Abbreviations

beg = begin(ning) · **ch** = chain · **cont** = continue · **dec** = decreas(e)(ing) · **inc** = increas(e)(ing) · **k** = knit · **kwise** = as if to knit
meas = measures · **M1L** = lift strand between sts from front to back and knit this strand through the back loop · **M1R** = lift strand between sts from the back and knit this strand through the front loop · **patt** = pattern · **pm** = place marker · **p** = purl
pwise = as if to purl · **rem** = remain(ing) · **rep** = repeat(s) · **rev St st** = reverse stockinette stitch · **rnd(s)** = round(s) · **RS** = right side · **sc** = single crochet · **skp** = slip 1 stitch as if to knit, knit 1 stitch, pass slipped stitch over knitted stitch · **sk2p** = slip 1 stitch as if to knit, knit 2 together, pass slipped stitch over knitted stitch · **s2kp** = slip 2 stitches as if to knit, k 1 stitch, pass slipped stitches over knitted stitch · **sl** = slip · **st(s)** = stitch(es) · **St st** = stockinette stitch · **tbl** = through the back loop · **tog** = together · **wyib** = with yarn in back of work · **wyif** = with yarn in front of work · **WS** = wrong side · **yo(s)** = yarn over(s)

Publisher's Info

Publisher: Lana Grossa GmbH, Gaimersheim, www.lanagrossa.com

Photographer: Herbert Dehn, www.herbertdehn.com