



[www.lanagrossa.com](http://www.lanagrossa.com)

© Lana Grossa GmbH - Photo: Herbert Dehn, [www.herbertdehn.com](http://www.herbertdehn.com)

## **PULLOVER · ABOUT BERLIN CHILLY**

Design 35 from Filati Handstrick 71



# PULLOVER • ABOUT BERLIN CHILLY

## Design 35 from Filati Handstrick 71



www.lanagrossa.com

**Size** 36 – 40 (44/46, 48/50)

Instructions are given for first size. Figures in parenthesis refer to larger sizes. When only one figure is given, it applies to all sizes.

**Materials:** 450 (500, 550) g of Lana Grossa **About Berlin Chilly** (100% linen; 95 m/50 g) in Grey (**col 10**). Size 6 and 6.5 mm needles; size 6.5 mm circular needle, 60 cm long; size 5 mm crochet hook.

**2 selvage sts:** At beg of RS row, k1, sl 1 pwise wyib; at end of RS row, work to last 2 sts, sl 1 pwise wyib, k1. At beg of WS row, sl 1 pwise wyif, p1; at end of WS row, work to last 2 sts, p1, sl 1 pwise wyif.

**Slip garter selvage:** On every row: Sl first st kwise, k last st.

**St st:** K on RS, p on WS.

**Rev St st:** P on RS, k on WS.

**Garter st:** K every row.

**Eyelet rib:** Work according to chart A. Numbers at right edge of chart indicate RS rows; on WS rows, work sts as they appear, p all yos. Work to patt rep, work 6 sts between arrows for patt rep, work to end of chart. Rep rows 1 – 4.

**Lace patt:** Work according to chart B. Numbers at right edge of chart indicate RS rows; on WS rows, p all sts and yos. Work to patt rep, work 6 sts between arrows for patt rep, work to end of chart. Rep rows 1 – 12.

**Full-fashion inc:** On RS row, M1R, 3 sts in from each edge.

**Full-fashion dec:** At beg of RS row, selvage st, skp (sk2p); at end of RS row, work to last 3 (4) sts, k2tog (k3tog), selvage st – 1 (2) st(s) decreased at each edge.

**Gauges:** 17 sts and 23 rows = 10 x 10 cm in eyelet rib on size 6 mm needles; 15 sts and 19 rows = 10 x 10 cm in lace patt on size 6.5 mm needles.

**Back:** With size 6 mm needles cast on 98 (104, 110) sts. P 1 WS row. Next row (RS): Work 2 selvage sts, 1 st in rev St st, work eyelet rib according to chart A over next 92 (98, 104) sts, work 1 st in rev St st, 2 selvage sts. Cont in patt as estab-

lished until piece meas 14.5 cm from cast-on, ending with a WS row. Working first 3 sts and last 3 sts as established, work rem sts in garter st for 2.5 cm, decreasing 7 sts evenly across last WS row = 91 (97, 103) sts. Working first 3 sts and last 3 sts as established, work rem sts in lace patt according to chart B and shape sides as foll: Working full-fashion inc, inc 1 st at each end of 3rd row worked in lace patt, then every 4th row 9 times, then every other row 10 times = 131 (137, 143) sts. Work increased sts into patt. **Note:** Make sure each yo is paired with a decrease and vice versa. Work even until 33 cm have been worked in lace patt, ending with a WS row. Next row (RS): K2tog, p1, patt to last 3 sts, p1, k2tog. Next row (WS): Slip garter selvage, patt to last st, slip garter selvage. Shape armholes: Working full-fashion dec, dec 1 st at each end of next 7 (11, 15) RS rows, then dec 2 sts at each end of next 6 (4, 2) RS rows. Work 1 WS row. Bind off rem 91 (97, 103) sts. Mark center 39 sts for neck.

**Front:** Work same as for back until piece meas 11 (13, 15) cm from beg of armhole shaping, ending with a WS row. Shape neck: Next row (RS): Bind off center 35 sts. Working each side separately, bind off 1 st at each neck edge twice and when same length as back to shoulders, bind off rem 26 (29, 32) sts for each shoulder.

**Finishing 1:** Sew shoulder seams.

**Sleeves:** Sleeves are picked up around armhole edge and worked from the top down. Arrow on schematic shows direction of work. With size 5 mm crochet hook, work 23 (26, 30) sc each between • and \* along front and back armhole edge = 46 (52, 60) sc total. Fasten off. With size 6.5 mm circular needle and RS facing, pick up and k 1 st for each sc = 46 (52, 60) sts. Beg and end with a WS row and working a slip garter selvage at each edge, work in garter st for 5 rows = approx. 2.5 cm. Next row (RS): Slip garter selvage, work 0 (0, 1) st in St st, work lace patt according to chart B to last 1 (1, 2) st(s), work 0 (0, 1) st in St st, slip garter selvage. Cont in patt as established until sleeve meas 12 cm from beg. Loosely bind off all sts in patt.

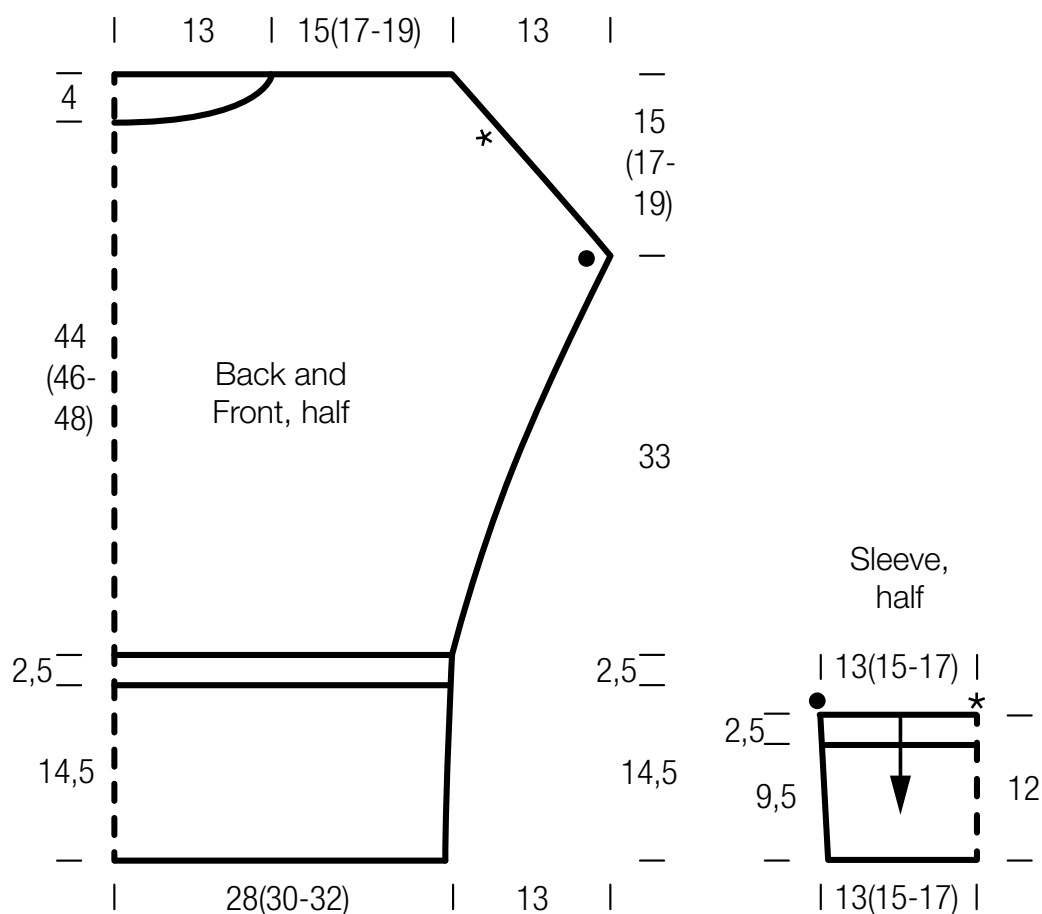
**Finishing 2:** Pin piece to measurements and block. Sew side and sleeve seams, working 1 st in from edge. **Neck trim:** With size 5 mm crochet hook, work 1 rnd sc around neck edge.

# PULLOVER · ABOUT BERLIN CHILLY

Design 35 from Filati Handstrick 71



www.lanagrossa.com



Charts A and B

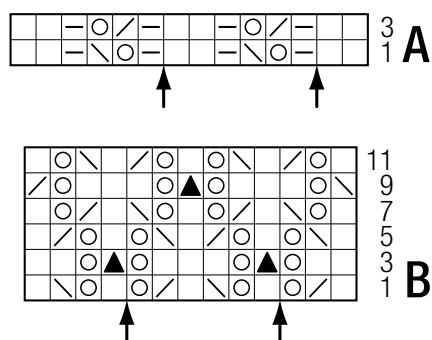


Chart key:

- = k1
- ▢ = p1
- = yo
- ▧ = k2tog
- ▨ = skp: sl 1 kwise, k1, pass slipped st over knitted st
- ▲ = s2kp: sl 2 kwise, k1, pass slipped sts over knitted st

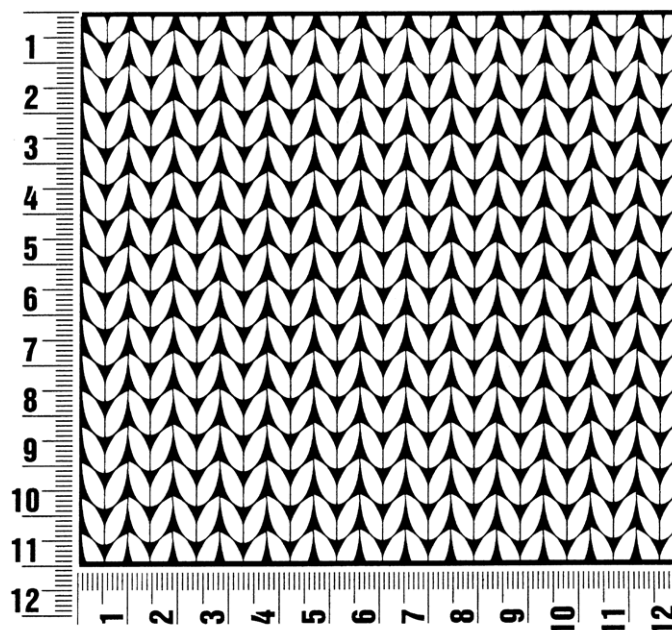
# Filati Handstrick 71

www.lanagrossa.com

## Gauge Swatch

### Before you begin ...

...make a gauge swatch. Use the recommended needles, yarns and pattern stitch for your gauge swatch. It should measure approx. 12 cm x 12 cm. Cast-on and bind-off rows, as well as selvage stitches should not be included in the measurement. Pin your swatch and block it as you would the finished pieces of the garment. Count stitches and rows over 10 cm. If your gauge swatch is too small, switch to larger needles. If your gauge swatch is too big, switch to smaller needles.



## Abbreviations

**beg** = begin(ning) · **ch** = chain · **cont** = continue · **dec** = decreas(e)(ing) · **inc** = increas(e)(ing) · **k** = knit · **kwise** = as if to knit  
**meas** = measures · **M1L** = lift strand between sts from front to back and knit this strand through the back loop · **M1R** = lift strand between sts from the back and knit this strand through the front loop · **patt** = pattern · **pm** = place marker · **p** = purl  
**pwise** = as if to purl · **rem** = remain(ing) · **rep** = repeat(s) · **rev St st** = reverse stockinette stitch · **rnd(s)** = round(s) · **RS** = right side · **sc** = single crochet · **skp** = slip 1 stitch as if to knit, knit 1 stitch, pass slipped stitch over knitted stitch · **sk2p** = slip 1 stitch as if to knit, knit 2 together, pass slipped stitch over knitted stitch · **s2kp** = slip 2 stitches as if to knit, k 1 stitch, pass slipped stitches over knitted stitch · **sl** = slip · **st(s)** = stitch(es) · **St st** = stockinette stitch · **tbl** = through the back loop · **tog** = together · **wyib** = with yarn in back of work · **wyif** = with yarn in front of work · **WS** = wrong side · **yo(s)** = yarn over(s)

### Publisher's Info

**Publisher:** Lana Grossa GmbH, Gaimersheim, [www.lanagrossa.com](http://www.lanagrossa.com)

**Photographer:** Herbert Dehn, [www.herbertdehn.com](http://www.herbertdehn.com)