



www.lanagrossa.com

TUNIC · PRIMA

Design 15 from Filati Crochet 02

TUNIC · PRIMA

Design 15 from Filati Crochet 02



www.lanagrossa.com

Size 36-38 (40-42, 44-46)

Instructions are given for first size. Figures in parenthesis refer to larger sizes. When only one figure is given, it applies to all sizes.

Materials: 450 (500, 550) g of Lana Grossa **Prima** (100% combed, mercerized, gassed cotton; 140 m/50 g) in White (col 22). Size 3.5 mm hook; one button.

Gauge: 22 sts and 9.5 rows = 10 x 10 cm in filet crochet with size 3.5 mm hook.

Note: Ch 3 at beg of rows counts as dc throughout.

Filet crochet: Multiple of 2 + 1. Work according to chart. Work rows 1 – 7 once, then rep rows 2 – 7.

Back: Ch 97 (101, 107) + ch 3. Work rows 1 – 7 of filet crochet chart once, then work rows 2 – 7 once more, then work rows 2 – 6 once more = 18 rows. Next row: Work row 7 of chart, inc 2 sts at each end of row. Work increased sts into patt. Work rows [2 – 7] 7 times, then work rows 2 – 4 once more = 64 rows total. Mark center 37 (39, 41) sts. Next row: Work row 65 of back neck shaping chart to marker and turn, leaving rem sts unworked. **Right back:** Work rows 66 and 67 of chart. Fasten off. **Left back:** With RS facing, rejoin yarn in first st after marker. Complete as given for right back, reversing all shaping. Fasten off.

Front: Work same as for back until a total of 42 rows has been worked from beg. Mark center 3 sts. Next row: Work chart row 7 to marker and turn, leaving rem sts unworked.

Left front: Work even in patt for 16 rows, ending with a chart row 5. Work rows 60 – 67 of front neck shaping chart. Fasten off. **Right front:** With RS facing, rejoin yarn in first st after marker. Complete as given for left front, reversing all shaping. Fasten off.

Finishing 1: Sew shoulder seams.

Sleeves: Place markers 20 (21, 21) rows down from shoulders on front and back. With RS facing, join yarn to side edge at sleeve marker, work row 1 of chart: Work 81 (85, 89) dc between sleeve markers: 2 dc in each row-end, 1 dc in shoulder seam and **for size 44-46 only**, 4 additional dc evenly spaced. Rep rows 2 – 7 of chart for a total of 49 (47, 45) rows. Fasten off.

Finishing 2: Pin piece to measurements and block. Sew side seams, leaving bottom 18 cm of side seams open for vents.

Neck edging: Join yarn with sl st in left shoulder seam, ch 3, dc along left front neck edge, 2 dc, ch 1, 2 dc in corner, dc along left slit edge, dc4tog at bottom of slit, dc along right slit edge, 2 dc, ch 1, 2 dc in corner, dc to left shoulder seam, sl st in top of beg ch-3 to join. Fasten off. **Vent edging:** Work 1 row dc along each vent edge, dc4tog at top of vent. Fasten off. Make a small button loop at beg of right front neck shaping; sew on button.

TUNIC · PRIMA

Design 15 from Filati Crochet 02



www.lanagrossa.com

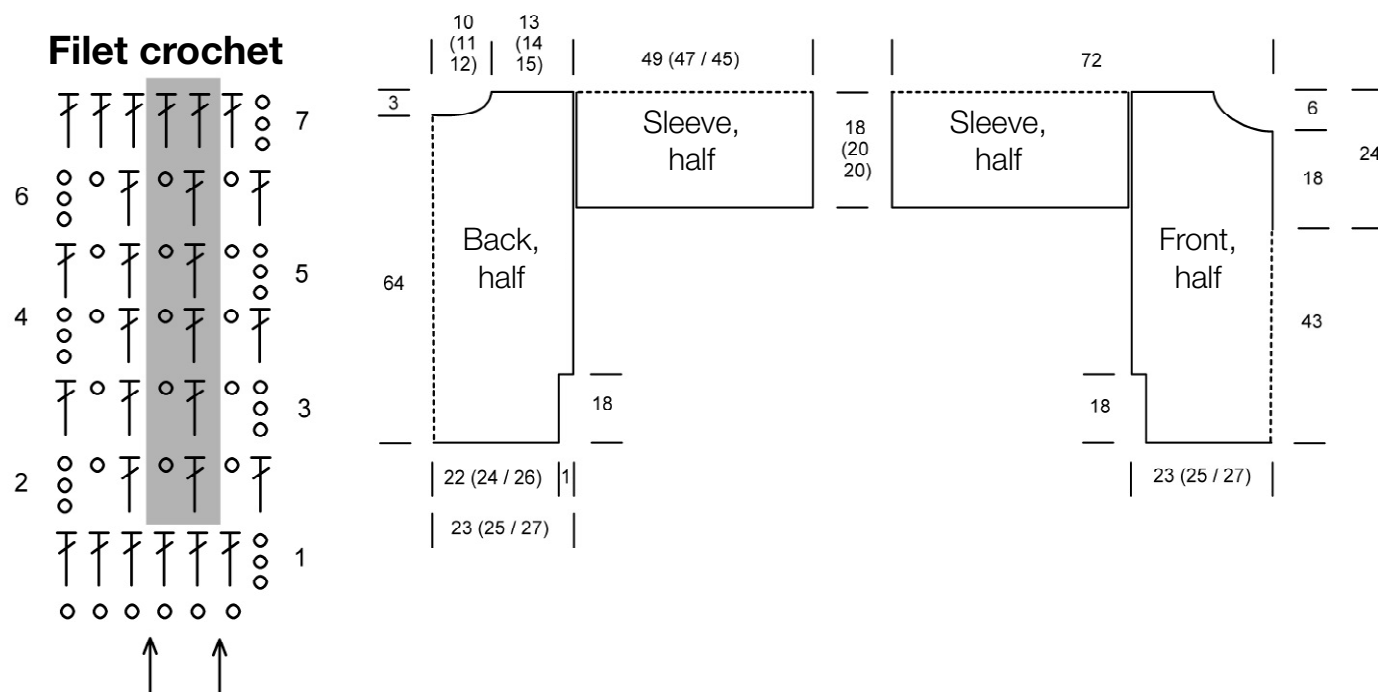


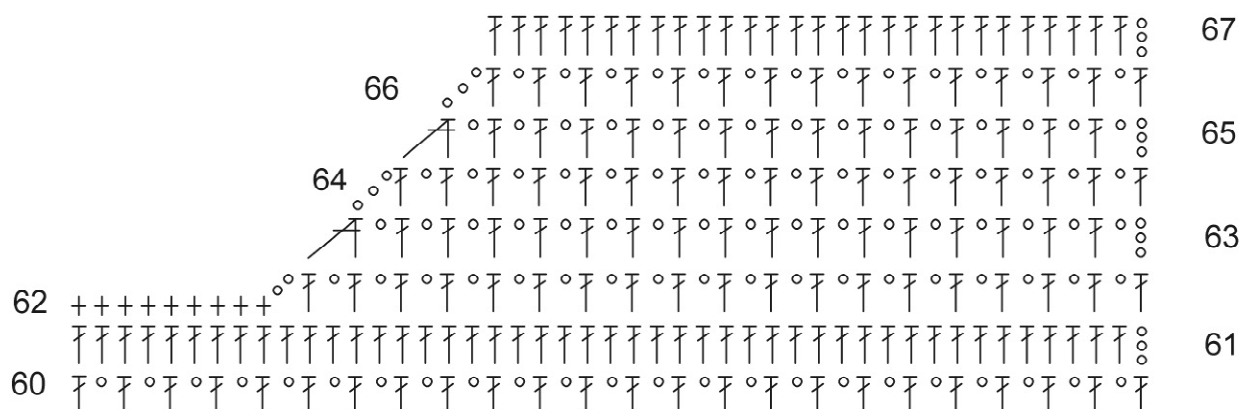
Chart key:

- = chain (ch)
- † = single crochet (sc)
- ⌈ = double crochet (dc)

Back neck shaping chart



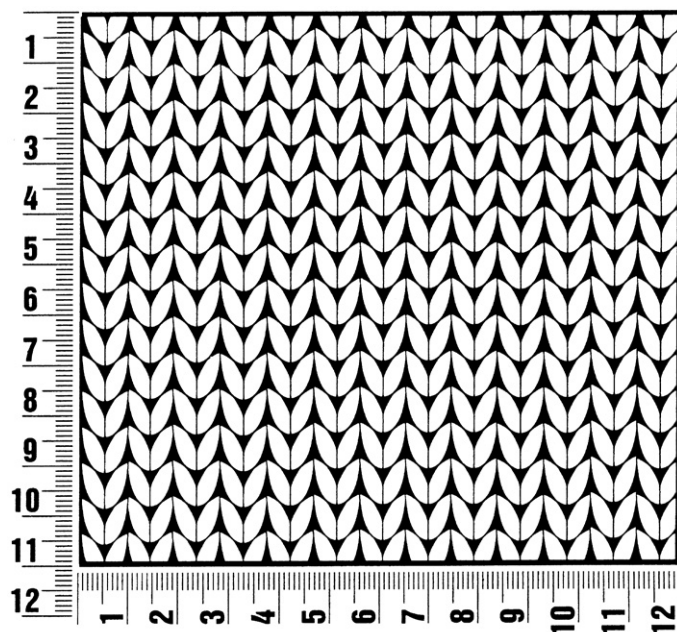
Front neck shaping chart



Gauge Swatch

Before you begin ...

...make a gauge swatch. Use the recommended needles, yarns and pattern stitch for your gauge swatch. It should measure approx. 12 cm x 12 cm. Cast-on and bind-off rows, as well as selvage stitches should not be included in the measurement. Pin your swatch and block it as you would the finished pieces of the garment. Count stitches and rows over 10 cm. If your gauge swatch is too small, switch to larger needles. If your gauge swatch is too big, switch to smaller needles.



Abbreviations

beg = begin(ning) · **blo** = back loop only · **ch** = chain · **cont** = continue · **dc** = double crochet · **dec** = decreas(e)(ing) · **dtr** = double treble crochet · **flo** = front loop only · **hdc** = half double crochet · **inc** = increas(e)(ing) · **lp(s)** = loop(s) · **meas** = measu-
res · **patt** = pattern · **pm** = place marker · **rem** = remain(ing) · **rep** = repeat(s) · **rnd(s)** = round(s) · **RS** = right side · **sc** = single
crochet · **sk** = skip · **sl st** = slip st · **sp(s)** = space(s) · **st(s)** = stitch(es) · **tch** = turning chain · **tr** = treble crochet · **WS** = wrong
side · **yo** = yarn over hook

Publisher's Info

Publisher: Lana Grossa GmbH, Gaimersheim, www.lanagrossa.com

Photographer: Petra Obermueller