



www.lanagrossa.com

DRESS · BABY SOFT

Design 49 from Filati Best of Infanti

DRESS · BABY SOFT

Design 49 from Filati Best of Infanti



www.lanagrossa.com

Size 68/74 (80/86, 92/98)

Instructions are given for first size. Figures in parenthesis refer to larger sizes. When only one figure is given, it applies to all sizes.

Materials: 100 (100, 150) g of Lana Grossa **Baby Soft** (60% polyamide, 40% cotton; 150 m/50 g) in Ecrú (col 2). Size 3.5 mm circular needle, 40 cm long; size 3 mm crochet hook.

St st: K on RS, p on WS; k every rnd.

Garter st: K every row.

Lace border: Multiple of 6. Work according to chart. Numbers at right edge of chart indicate rnds; on all rnds not shown on chart, knit all sts and yos. Work all rnds from right to left. Work 6-st patt rep between arrows around. Work rnds 1 – 6 once.

Gauge: 17.5 sts and 30 rows/rnds = 10 x 10 cm in St st with size 3.5 mm needles; 6 rnds of lace border = 2 cm.

Dress: Worked in one piece in the rnd to underarm. With size 3.5 mm circular needle cast on 126 (132, 138) sts. Place beg of rnd marker and join for working in rnds. Set-up rnd: P63 (66, 69), place side marker, purl to end of rnd. [Knit 1 rnd, purl 1 rnd] twice. Work rnds 1 – 6 of lace border chart. Purl 1 rnd, [knit 1 rnd, purl 1 rnd] twice. **For size 68/74:** ** Work in St st for 5 rnds. Dec rnd 1: * Knit to 2 sts before marker, skp, slide marker; rep from * once more. Work 5 rnds even. Dec rnd 2: K2tog, knit to marker, sl marker, k2tog, knit to end. Rep from

** 3 more times. Work 5 rnds even, then work dec rnd 1 once more. Work 3 rnds even, work dec rnd 2, work 3 rnds even, work dec rnd 1, work 3 rnds even, work dec rnd 2 = 102 sts. **For size 80/86:** ** Work in St st for 5 rnds. Dec rnd 1: * Knit to 2 sts before marker, skp, slide marker; rep from * once more. Work 5 rnds even. Dec rnd 2: K2tog, knit to marker, sl marker, k2tog, knit to end. Rep from ** 4 more times. Work 3 rnds even, work dec rnd 1, work 3 rnds even, work dec rnd 2 = 108 sts. **For size 92/98:** ** Work in St st for 5 rnds. Dec rnd 1: * Knit to 2 sts before marker, skp, slide marker; rep from * once more. Work 5 rnds even. Dec rnd 2: K2tog, knit to marker, sl marker, k2tog, knit to end. Rep from ** 5 more times = 114 sts. **For all sizes:** Work even until piece meas 27.5 (28.5, 29.5) cm from cast-on. Next dec rnd: Dec 18 (20, 20) sts evenly around = 84 (88, 94) sts. Work even until piece meas 28 (29, 30) cm from cast-on. Divide for front and back: Place last 51 (54, 57) sts worked on holder for back = 51 (54, 57) sts rem for front. **Front:** Work in St st, back and forth in rows across front sts only and shape armholes as foll: Bind off 5 sts at beg of next 2 rows = 32 (34, 37) sts. Work in garter st until piece meas 30.5 (31.5, 33.5) cm from cast-on, ending with a WS row. Shape neck: Next row (RS): Bind off center 18 (20, 23) sts = 7 sts rem for each side. Working each side separately, work even until piece meas 35.5 (37.5, 39.5) cm from cast-on. Bind off rem 7 sts for each shoulder. **Back:** Return 51 (54, 57) held back sts to needle and with RS facing, rejoin yarn. Complete as given for front.

Finishing: Pin piece to measurements and block. Sew shoulder seams. With size 3 mm crochet hook work 1 row sc along each armhole bind-off.

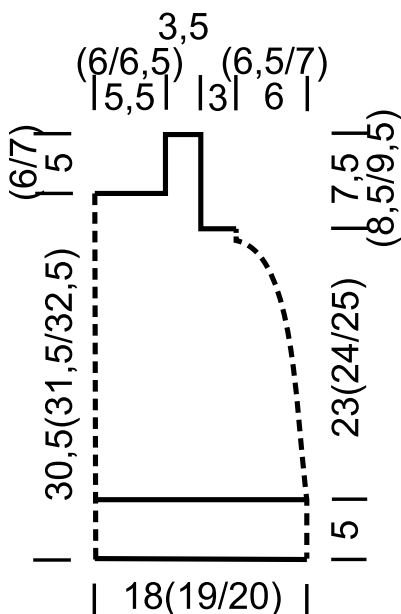
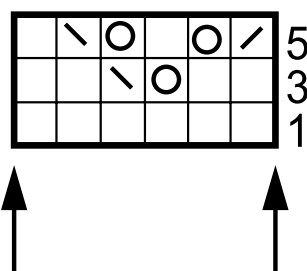


Chart key:

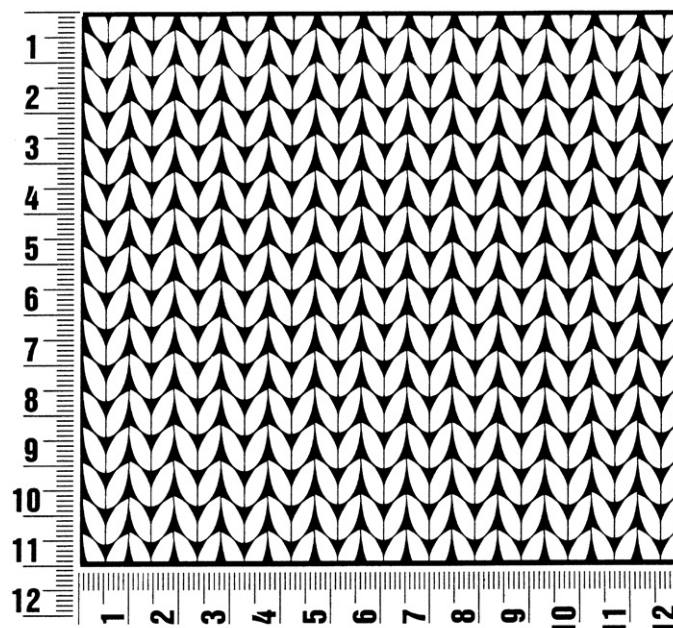
- = k1
- ⊙ = yo
- ⊠ = k2tog
- ⊡ = skp (sl 1 kwise, k1, pass slipped st over knitted st)



Gauge Swatch

Before you begin ...

...make a gauge swatch. Use the recommended needles, yarns and pattern stitch for your gauge swatch. It should measure approx. 12 cm x 12 cm. Cast-on and bind-off rows, as well as selvage stitches should not be included in the measurement. Pin your swatch and block it as you would the finished pieces of the garment. Count stitches and rows over 10 cm. If your gauge swatch is too small, switch to larger needles. If your gauge swatch is too big, switch to smaller needles.



Abbreviations

beg = begin(ning) · **ch** = chain · **cont** = continue · **dec** = decreas(e)(ing) · **inc** = increas(e)(ing) · **k** = knit · **kwise** = as if to knit
meas = measures · **M1L** = lift strand between sts from front to back and knit this strand through the back loop · **M1R** = lift strand between sts from the back and knit this strand through the front loop · **patt** = pattern · **pm** = place marker · **p** = purl
pwise = as if to purl · **rem** = remain(ing) · **rep** = repeat(s) · **rev St st** = reverse stockinette stitch · **rnd(s)** = round(s) · **RS** = right side · **sc** = single crochet · **skp** = slip 1 stitch as if to knit, knit 1 stitch, pass slipped stitch over knitted stitch · **sk2p** = slip 1 stitch as if to knit, knit 2 together, pass slipped stitch over knitted stitch · **s2kp** = slip 2 stitches as if to knit, k 1 stitch, pass slipped stitches over knitted stitch · **sl** = slip · **st(s)** = stitch(es) · **St st** = stockinette stitch · **tbl** = through the back loop · **tog** = together · **wyib** = with yarn in back of work · **wyif** = with yarn in front of work · **WS** = wrong side · **yo(s)** = yarn over(s)

Publisher's Info

Publisher: Lana Grossa GmbH, Gaimersheim, www.lanagrossa.com

Photographer: Julia Imhoff