



PANTS · BABY SOFT

Design 51 from Filati Best of Infanti

PANTS · BABY SOFT

Design 51 from Filati Best of Infanti



www.lanagrossa.com

Size 50/56 (62/68, 74/80)

Instructions are given for first size. Figures in parenthesis refer to larger sizes. When only one figure is given, it applies to all sizes.

Materials: 50 (50, 100) g of Lana Grossa **Baby Soft** (60% polyamide, 40% cotton; 150 m/50 g) in Pink (col 13). Size 4 mm needles; size 4 mm circular needle, 40 cm long.

Rib patt: K1, p1.

St st: K on RS, p on WS; k every rnd.

Eyelet patt: Multiple of 9. Work according to chart. Number at right edge of chart indicates RS row; on WS row, purl all sts and yos. Work 9-st patt rep between arrows throughout. Work rows 1 and 2 two times.

Gauge: 16.5 sts and 34.5 rows/rnds = 10 x 10 cm in St st with size 4 mm needles.

Right leg: With size 4 mm needles cast on 38 (42, 46) sts. Knit 1 WS row. Next row (RS): Selvage st, work 0 (2, 4) sts in St st, work eyelet patt according to chart over next 36 sts (beg at arrow a, work 4 sts to end of chart, then work 9-st patt rep 3 times, then work first 5 sts of patt rep once more, ending at arrow a), work 0 (2, 4) sts in St st, selvage st. Cont in patt as established for 3 more rows, ending with a WS row. Leave sts on needle and break yarn.

Left leg: With circular needle cast on 38 (42, 46) sts. Complete as given for right leg, leave sts on needle, do not break yarn.

Body: Next row (RS): K19 (21, 23) across left leg, place first marker, k19 (21, 23) to end of left leg, cast on 8 sts for gusset, k19 (21, 23) across right leg, place 2nd marker, k19 (21, 23) to end of right leg, cast on 8 sts for gusset, join for working in rnds, k19 (21, 23) to first marker = beg of rnd marker. Work St st in rnds and work decs to shape gussets on every alt rnd as foll: * K to 1 st before gusset, skp, k to last gusset st, k2tog; rep from * once more, k to end of rnd = 76 (84, 92) sts after all gusset sts have been decreased. Cont in St st until piece meas 13.5 (15.5, 17.5) cm from leg cast-on.

Next, shape back of pants using short-rows as foll: At end of rnd, turn. Next row (WS): Yo, p to next marker, turn. * Next row (RS): Yo, k to 3 sts before prev yo, turn. Next row (WS): Yo, p to 3 sts before prev yo, turn. Rep from * 2 more times. Next row (RS): Yo, k to marker and work each yo tog with next st as k2tog (remove and replace marker as needed), continue knitting to 1 st before next marker (remove and replace marker as needed), skp next st and yo, [k2, skp next st and yo] 3 times, continue knitting to next = beg of rnd marker. Work in rib patt until piece meas 17 (19, 21) cm from leg cast-on, measured along front of pants. Bind off all sts.

Finishing: Pin piece to measurements and block.

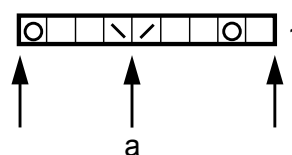
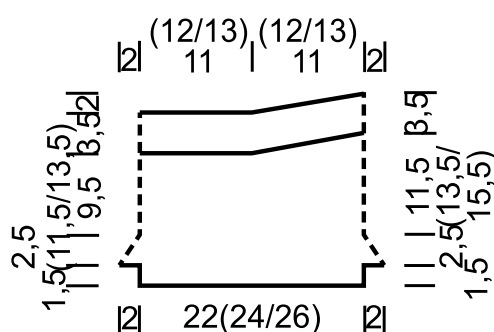


Chart key:

- = k1
- ⊙ = yo
- ▣ = k2tog
- ▤ = skp (sl 1 kwise, k1, pass slipped st over knitted st)

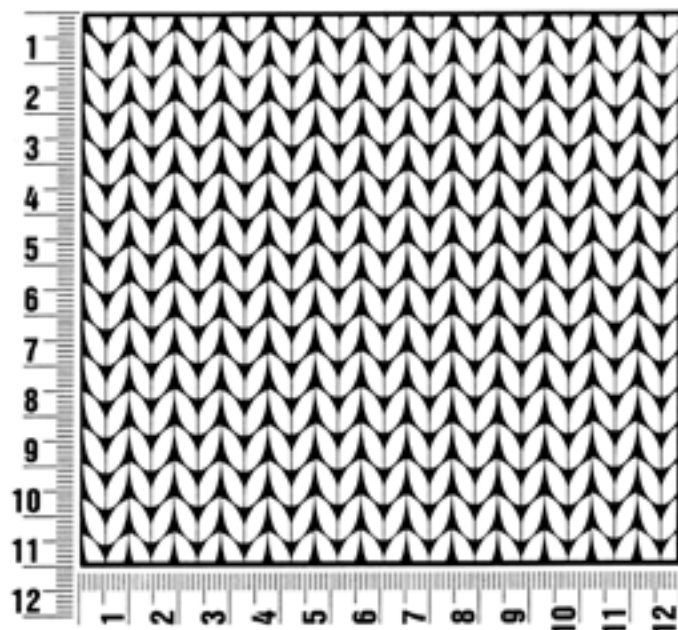
Filati Best of Infanti

www.lanagrossa.com

Gauge Swatch

Before you begin ...

...make a gauge swatch. Use the recommended needles, yarns and pattern stitch for your gauge swatch. It should measure approx. 12 cm x 12 cm. Cast-on and bind-off rows, as well as selvage stitches should not be included in the measurement. Pin your swatch and block it as you would the finished pieces of the garment. Count stitches and rows over 10 cm. If your gauge swatch is too small, switch to larger needles. If your gauge swatch is too big, switch to smaller needles.



Abbreviations

beg = begin(ning) · **ch** = chain · **cont** = continue · **dec** = decreas(e)(ing) · **inc** = increas(e)(ing) · **k** = knit · **kwise** = as if to knit
meas = measures · **M1L** = lift strand between sts from front to back and knit this strand through the back loop · **M1R** = lift strand between sts from the back and knit this strand through the front loop · **patt** = pattern · **pm** = place marker · **p** = purl
pwise = as if to purl · **rem** = remain(ing) · **rep** = repeat(s) · **rev St st** = reverse stockinette stitch · **rnd(s)** = round(s) · **RS** = right side · **sc** = single crochet · **skp** = slip 1 stitch as if to knit, knit 1 stitch, pass slipped stitch over knitted stitch · **sk2p** = slip 1 stitch as if to knit, knit 2 together, pass slipped stitch over knitted stitch · **s2kp** = slip 2 stitches as if to knit, k 1 stitch, pass slipped stitches over knitted stitch · **sl** = slip · **st(s)** = stitch(es) · **St st** = stockinette stitch · **tbl** = through the back loop · **tog** = together · **wyib** = with yarn in back of work · **wyif** = with yarn in front of work · **WS** = wrong side · **yo(s)** = yarn over(s)

Publisher's Info

Publisher: Lana Grossa GmbH, Gaimersheim, www.lanagrossa.com

Photographer: Julia Imhoff