



JACKET · BABY SOFT

Design 52 from Filati Best of Infanti

JACKET • BABY SOFT

Design 52 from Filati Best of Infanti



www.lanagrossa.com

Size 50/56 (62/68, 74/80)

Instructions are given for first size. Figures in parenthesis refer to larger sizes. When only one figure is given, it applies to all sizes.

Materials: **50 (100, 100) g** of Lana Grossa **Baby Soft** (60% polyamide, 40% cotton; 150 m/50 g) in Beige (**col 21**) and **50 g** in Ecru (**col 2**). Size 3.5 mm needles; size 3.5 mm circular needle, 40 cm long; three 15 mm buttons.

Rib patt: K1, p1.

St st: K on RS, p on WS.

Garter st: K every row.

Gauge: 17.5 sts and 33 rows = 10 x 10 cm in St st with size 3.5 mm needles.

Back: With size 3.5 mm needles and Beige cast on 40 (44, 48) sts. Work in rib patt until piece meas 1 cm from cast-on, ending with a WS row. Work in St st and shape sides as foll: Dec 1 st at each end of 11 (13, 13)th row, then every 12th row once (then every 12th row once / then every 14th row once) = 36 (40, 44) sts. Work even until piece meas 19 (21, 23) cm from cast-on, ending with a WS row. Shape neck: Next row (RS): Bind off center 20 (22, 24) sts = 8 (9, 10) sts rem for each side. Work even until piece meas 19.5 (21.5, 23.5) cm from cast-on. Bind off rem 8 (9, 10) sts for each shoulder.

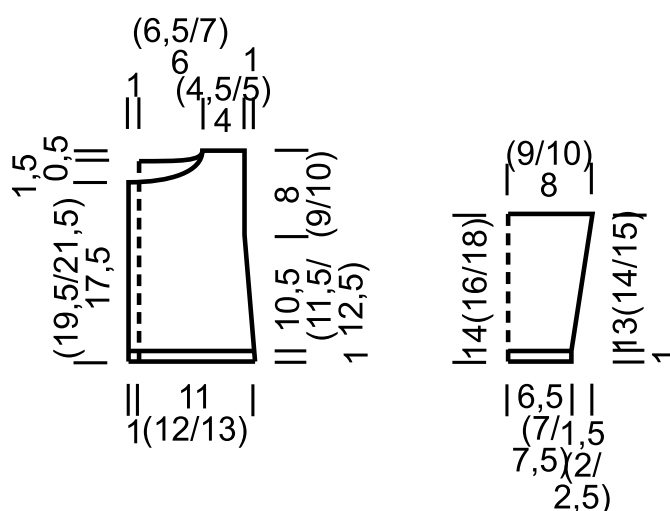
Left front: With size 3.5 mm needles and Beige cast on 23 (25, 27) sts. Next row (WS): Selvage st, p1, * k1, p1; rep from *, end selvage st. Cont in rib patt as established until piece meas 1 cm from cast-on, ending with a WS row. Next row (RS): Knit. Next row (WS): Selvage st, [p1, k1] twice, purl to

last st, selvage st. Cont in patt as established and shape side as foll: Dec 1 st at beg of 11 (13, 13)th row, then every 12th row once (then every 12th row once / then every 14th row once) = 21 (23, 25) sts. Work even until piece meas 17.5 (19.5, 21.5) cm from cast-on, ending with a RS row. Shape neck: At beg of WS rows, bind off 10 (11, 12) sts once, 2 sts once, 1 st once. Bind off rem 8 (9, 10) shoulder sts.

Right front: Work same as left front, reversing all shaping and patt placement and working 3 buttonholes at beg RS rows as foll: Patt over 2 sts, [k2tog, yo] for buttonhole, work to end. Work first buttonhole when piece meas 10 (11, 12) cm from cast-on, rem 2 buttonholes spaced 3.5 (4, 4.5) cm apart.

Sleeves: With size 3.5 mm needles and Beige cast on 24 (26, 28) sts. Work in rib patt until piece meas 1 cm from cast-on, ending with a WS row. Work in St st for 6 rows: 2 rows with Ecru, 2 rows with Beige, 2 rows with Ecru. Break Ecru, cont with Beige and in St st and shape sleeve as foll: Inc 1 st at each end of 15 (13, 13)th row from last Ecru stripe, then every 14th row once (then every 12th row twice / then every 12th row twice, then every 10th row once) = 28 (32, 36) sts. Work even until piece meas 14 (16, 18) cm from cast-on. Bind off all sts.

Finishing: Pin pieces to measurements and block. Sew shoulder seams. **Neckband:** With size 3.5 mm circular needle and Beige, pick up and k 56 (60, 64) sts evenly along right front, back and left front neck edge. Next row (WS): Work in garter st. Cont in garter st, work [2 rows with Ecru, 2 rows with Beige] twice. Bind off all sts. Place markers 8 (9, 10) cm down from shoulders on front and back. Sew on sleeves between markers. Sew side and sleeve seams. Sew on buttons.



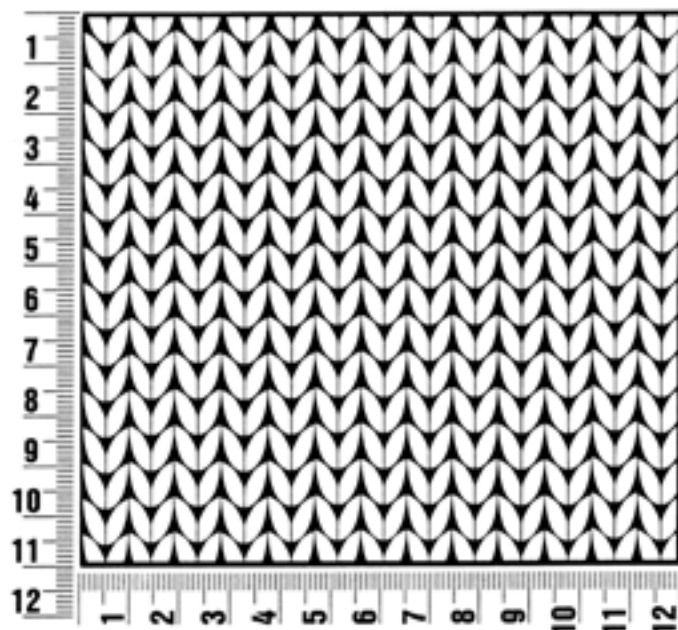
Filati Best of Infanti

www.lanagrossa.com

Gauge Swatch

Before you begin ...

...make a gauge swatch. Use the recommended needles, yarns and pattern stitch for your gauge swatch. It should measure approx. 12 cm x 12 cm. Cast-on and bind-off rows, as well as selvage stitches should not be included in the measurement. Pin your swatch and block it as you would the finished pieces of the garment. Count stitches and rows over 10 cm. If your gauge swatch is too small, switch to larger needles. If your gauge swatch is too big, switch to smaller needles.



Abbreviations

beg = begin(ning) · **ch** = chain · **cont** = continue · **dec** = decreas(e)(ing) · **inc** = increas(e)(ing) · **k** = knit · **kwise** = as if to knit
meas = measures · **M1L** = lift strand between sts from front to back and knit this strand through the back loop · **M1R** = lift strand between sts from the back and knit this strand through the front loop · **patt** = pattern · **pm** = place marker · **p** = purl
pwise = as if to purl · **rem** = remain(ing) · **rep** = repeat(s) · **rev St st** = reverse stockinette stitch · **rnd(s)** = round(s) · **RS** = right side · **sc** = single crochet · **skp** = slip 1 stitch as if to knit, knit 1 stitch, pass slipped stitch over knitted stitch · **sk2p** = slip 1 stitch as if to knit, knit 2 together, pass slipped stitch over knitted stitch · **s2kp** = slip 2 stitches as if to knit, k 1 stitch, pass slipped stitches over knitted stitch · **sl** = slip · **st(s)** = stitch(es) · **St st** = stockinette stitch · **tbl** = through the back loop · **tog** = together · **wyib** = with yarn in back of work · **wyif** = with yarn in front of work · **WS** = wrong side · **yo(s)** = yarn over(s)

Publisher's Info

Publisher: Lana Grossa GmbH, Gaimersheim, www.lanagrossa.com

Photographer: Julia Imhoff