



www.lanagrossa.com

PULLOVER · BENESSERE & SILKHAIR PRINT

Design 47 from Filati Journal 58

PULLOVER · BENESSERE & SILKHAIR PRINT

Design 47 from Filati Journal 58



www.lanagrossa.com

Size 36 – 46
One size fits all

Materials: **350 g** of Lana Grossa **Benessere** (45% cotton, 32% alpaca, 23% polyamide; 125 m/50 g) in Camel (**col 4**) and **100 g** in Red (**col 12**); **100 g** of Lana Grossa **Silkhair Print** (70% superkid mohair, 30% silk; 400 m/50 g) in Greige/Mid-/Dark Brown/Taupe (**col 359**) and **50 g** in Red/Aubergine/Petrol Green (**col 352**). Size 9 mm circular needle, 80 cm long; size 5 mm crochet hook.

Note: Work with 1 strand Benessere and 2 strands Silkhair Print held tog throughout = 3 strands.

Slip garter selvage: On every row: Sl first st kwise, knit last st.

Main patt: Work according to chart. Numbers at right edge of chart indicate RS rows, numbers at left edge of chart indicate WS rows. Work to patt rep, work 18 sts between arrows for patt rep, work to end of chart. Rep rows 1 – 28.

Garter st: K every row.

Gauges: With size 9 mm needles and 1 strand Benessere and 2 strands Silkhair Print held tog: 11 sts and 18 rows = 10 x 10 cm in main patt; 11 sts and 18.5 rows = 10 x 10 cm in garter st.

Back: With size 9 mm circular needle and 1 strand Benessere col 4 and 2 strands Silkhair Print col 359 held tog cast on 74 sts. Work main patt according to chart until piece meas 42 cm from cast-on, ending with a WS row. Shape sleeves: Cast on 12 sts at beg of next 2 rows = 98 sts. Work cast-on sts into patt. Work even until sleeve meas 17.5 cm, ending with a WS row. Loosely bind off all sts. Mark center 30 sts for neck.

Front: Work same as back.

Sleeve cuffs: Cuffs are picked up along sleeve edge and worked from the top down. Sew shoulder/overarm seams. With size 9 mm circular needle, 1 strand Benessere col 12 and 2 strands Silkhair Print col 352 held tog and with RS facing, pick up and k 32 sts evenly along sleeve edge. Work in garter st for 25 cm. Bind off all sts.

Finishing: Pin piece to measurements and block. Sew side, sleeve and cuff seams. **Cuff trim:** With size 5 mm crochet hook and 1 strand Benessere col 12 and 2 strands Silkhair Print col 352 held tog and with RS facing, work 1 rnd sc around bottom edge of cuff, working 1 sc in every other bound-off st. Fasten off. **Hem trim:** With size 5 mm crochet hook and 1 strand Benessere col 4 and 2 strands Silkhair Print col 359 held tog and with RS facing, work 1 rnd sc around bottom edge of back and front, working 1 sc in every cast-on st. Fasten off.

PULLOVER · BENESSERE & SILKHAIR PRINT

Design 47 from Filati Journal 58



www.lanagrossa.com

Chart

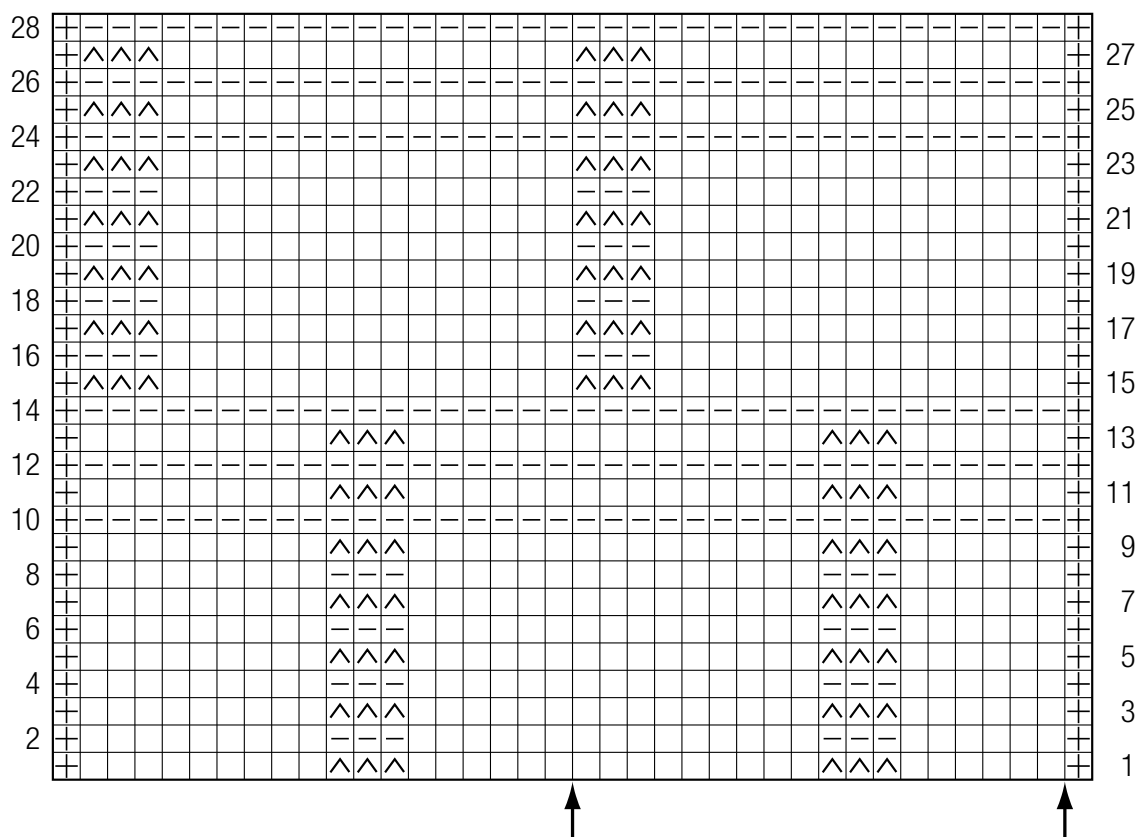
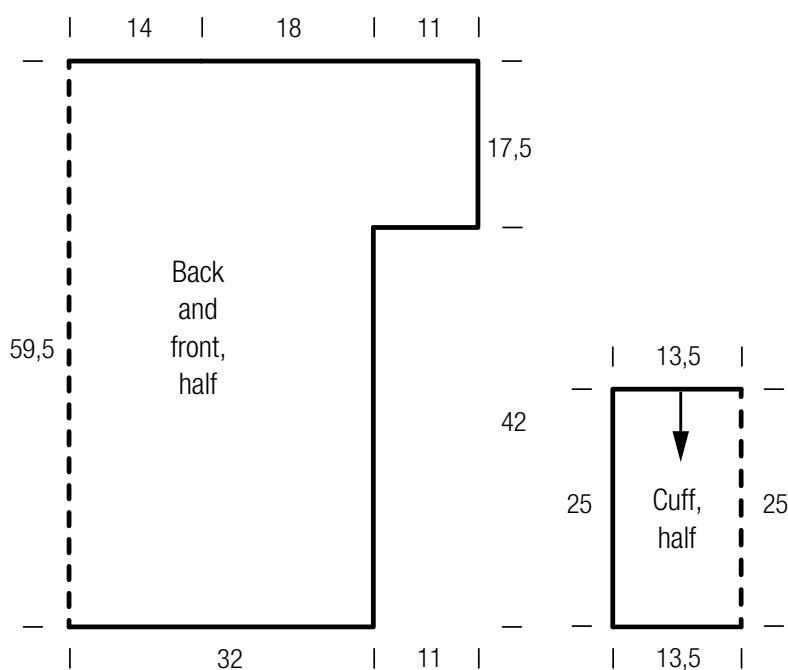


Chart key:

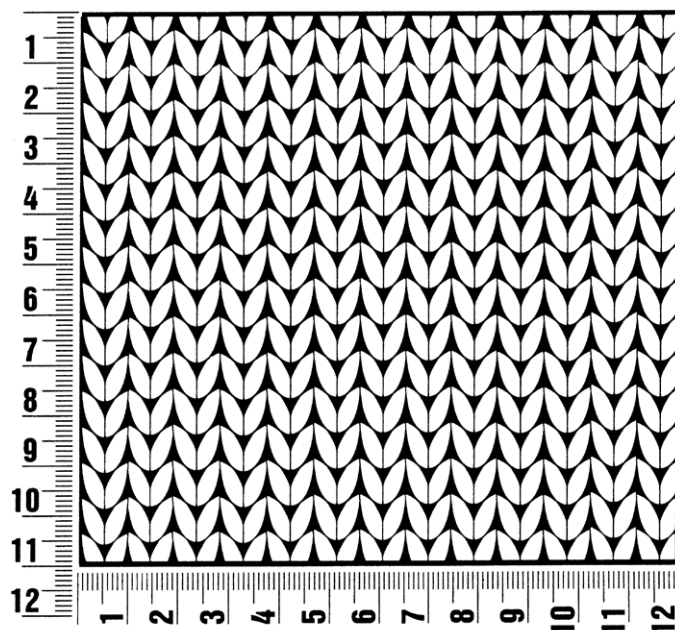
- = slip garter selvage
- = k1
- = p1
- = sl 1 pwise wyib



Gauge Swatch

Before you begin ...

...make a gauge swatch. Use the recommended needles, yarns and pattern stitch for your gauge swatch. It should measure approx. 12 cm x 12 cm. Cast-on and bind-off rows, as well as selvage stitches should not be included in the measurement. Pin your swatch and block it as you would the finished pieces of the garment. Count stitches and rows over 10 cm. If your gauge swatch is too small, switch to larger needles. If your gauge swatch is too big, switch to smaller needles.



Abbreviations

beg = begin(ning) · **ch** = chain · **cont** = continue · **dec** = decreas(e)(ing) · **inc** = increas(e)(ing) · **k** = knit · **kwise** = as if to knit
meas = measures · **M1L** = lift strand between sts from front to back and knit this strand through the back loop · **M1R** = lift strand between sts from the back and knit this strand through the front loop · **patt** = pattern · **pm** = place marker · **p** = purl
pwise = as if to purl · **rem** = remain(ing) · **rep** = repeat(s) · **rev St st** = reverse stockinette stitch · **rnd(s)** = round(s) · **RS** = right side · **sc** = single crochet · **skp** = slip 1 stitch as if to knit, knit 1 stitch, pass slipped stitch over knitted stitch · **sk2p** = slip 1 stitch as if to knit, knit 2 together, pass slipped stitch over knitted stitch · **s2kp** = slip 2 stitches as if to knit, k 1 stitch, pass slipped stitches over knitted stitch · **sl** = slip · **st(s)** = stitch(es) · **St st** = stockinette stitch · **tbl** = through the back loop · **tog** = together · **wyib** = with yarn in back of work · **wyif** = with yarn in front of work · **WS** = wrong side · **yo(s)** = yarn over(s)

Publisher's Info

Publisher: Lana Grossa GmbH, Gaimersheim, www.lanagrossa.com
Photographer: Nicolas Olonetzky c/o Bascha Kicki Fotografen, www.bascha-photographers.de