



www.lanagrossa.com

JACKET · COOL WOOL SEMI SOLID

Design 09 - Filati Kids 11

Design 09 - Filati Kids 11



www.lanagrossa.com

Size 104/110 (116/122, 128/134)

Instructions are given for first size. Figures in parenthesis refer to larger sizes. When only one figure is given, it applies to all sizes.

Materials: 300 (300, 350) g of Lana Grossa **Cool Wool Semi Solid** (100% pure wool; 160 m/50 g) in Pink/Salmon/Pale Grey Mélange (**col 6512**). Size 4.5 mm needles; size 4.5 mm circular needle, 40 cm long; size 3.5 mm crochet hook; four 18 mm buttons in red [by Union Knopf, item 452665].

Garment: Garter st: K every row.

Pyramid stitch: Multiple of 10 + 1 + 2 selvaige sts (not shown on chart). Work according to chart. Numbers at right edge of chart indicate RS rows; on WS rows, purl all sts. Rep rows 1 – 16.

Full-fashion decrease: At beg of RS row, 4 sts in garter st, k2tog; at end of RS row, work to last 6 sts, k2tog, 4 sts in garter st.

Gauge: 21 sts and 40 rows = 10 x 10 cm in pyramid st on size 4.5 mm needles.

Back: With size 4.5 mm needles and using the double-stranded long-tail cast-on, cast on 63 (73, 83) sts. Purl 1 WS row, then work in garter st for 10 rows. Next row (RS): Salvage st, work pyramid st chart over next 61 (71, 81) sts: Work patt rep 6 (7, 8) times, work to end of chart = 1 st; salvage st. Cont to foll chart until piece meas approx. 35.5 (38.5, 41.5) cm from cast-on and 8.5 (9, 10) 16-row reps have been worked. Place 13 (18, 23) sts for each shoulder on separate holders, place rem 37 sts for neck on separate holder.

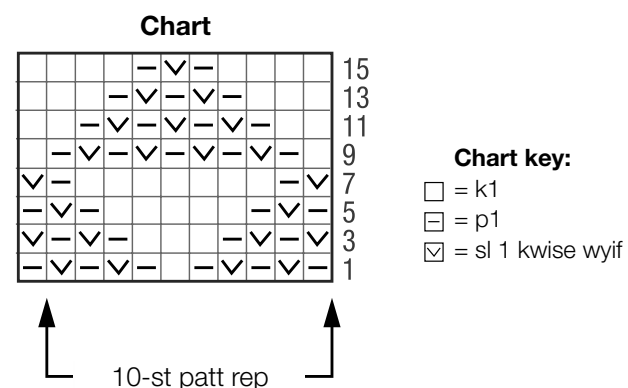
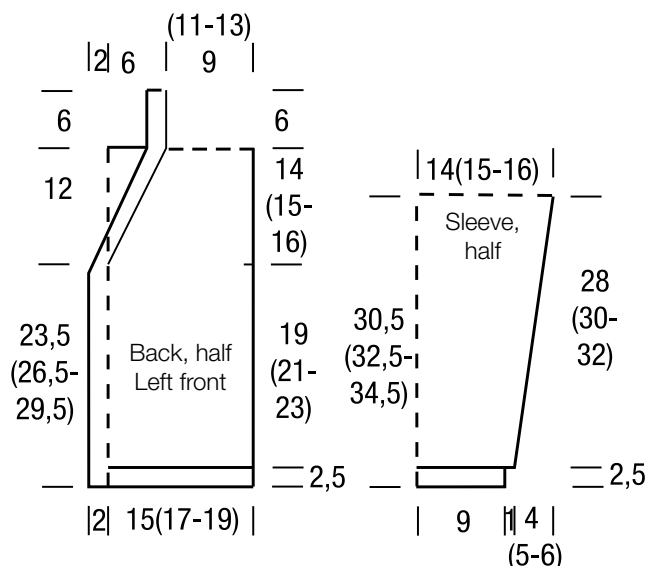
Left front: With size 4.5 mm needles and using the double-stranded long-tail cast-on, cast on 36 (41, 46) sts. Purl 1 WS row, then work in garter st for 10 rows. Next row (RS): Selvage st, work pyramid st chart over next 30 (35, 40) sts: Work patt rep 3 times (work patt rep 3 times, then work first 5

sts of patt rep once more / work patt rep 4 times), work rem 5 sts in garter st for front band. Cont in patt as established until piece meas 23.5 (26.5, 29.5) cm from cast-on, ending with a WS row. Shape neck: Next RS (dec) row: Work in patt and working full-fashion dec, dec 1 st at end of row = 35 (40, 45) sts. Cont in patt, rep dec row every foll RS row 9 times, then every alt 2nd and 4th row 8 times = 18 (23, 28) sts rem. Work even until piece meas 35.5 (38.5, 41.5) cm from cast-on, ending with a WS row. Place 13 (18, 23) shoulder sts on holder, place rem 5 sts on separate holder.

Right front: Work same as left front, reversing all shaping and patt placement and working four buttonholes on RS rows as foll: K2, bind off 2 sts, patt to end. Next row (WS): Work in patt, cast on 2 sts over bound-off sts. Work first buttonhole when piece meas 1.5 cm from cast-on, rem three buttonholes spaced 7 (8, 9) cm apart.

Sleeves: With size 4.5 mm needles and using the double-stranded long-tail cast-on, cast on 39 sts. Purl 1 WS row, then work in garter st for 10 rows, increasing 4 sts evenly across last WS row = 43 sts. Next row (RS): Selvage st, work pyramid chart over next 41 sts: Work patt rep 4 times, work to end of chart = 1 st; selvage st. Cont to foll chart and shape sleeve as foll: Inc 1 st at each end of 13 (11, 11)th row worked in pyramid st, then every alt 10th and 12th row 8 times (then every 10th row 10 times / then every alt 8th and 10th row 12 times) = 61 (65, 69) sts. Work increased sts into patt. Work even until piece meas 30.5 (32.5, 34.5) cm from cast-on, ending with a WS row. Place sts on holder.

Finishing: Pin pieces to measurements and block. Join shoulders with 3-needle bind-off. **Left neckband:** Return 5 neckband sts from holder to needles and with RS facing, rejoin yarn. Next row (RS): Cast on 1 st, k5. Work in garter st for 6 cm, ending with a WS row. Place sts on holder. **Right neckband:** Work same as left neckband, casting on 1 st at end of first RS row. Graft neckband sts tog, then sew neckband to back neck edge. With size 3.5 mm crochet hook, work 1 row sc along right front, back neck and left front edge. Place markers 14 (15, 16) cm down from shoulders on fronts and back. Graft sleeves to body. Sew side and sleeve seams. Sew on buttons.



Gauge Swatch

Before you begin ...

...make a gauge swatch. Use the recommended needles, yarns and pattern stitch for your gauge swatch. It should measure approx. 12 cm x 12 cm. Cast-on and bind-off rows, as well as selvage stitches should not be included in the measurement. Pin your swatch and block it as you would the finished pieces of the garment. Count stitches and rows over 10 cm. If your gauge swatch is too small, switch to larger needles. If your gauge swatch is too big, switch to smaller needles.



Abbreviations

beg = begin(ning) · **ch** = chain · **cont** = continue · **dec** = decreas(e)(ing) · **inc** = increas(e)(ing) · **k** = knit · **kwise** = as if to knit
meas = measures · **M1L** = lift strand between sts from front to back and knit this strand through the back loop · **M1R** = lift strand between sts from the back and knit this strand through the front loop · **patt** = pattern · **pm** = place marker · **p** = purl
pwise = as if to purl · **rem** = remain(ing) · **rep** = repeat(s) · **rev St st** = reverse stockinette stitch · **rnd(s)** = round(s) · **RS** = right side · **sc** = single crochet · **skp** = slip 1 stitch as if to knit, knit 1 stitch, pass slipped stitch over knitted stitch · **sk2p** = slip 1 stitch as if to knit, knit 2 together, pass slipped stitch over knitted stitch · **s2kp** = slip 2 stitches as if to knit, k 1 stitch, pass slipped stitches over knitted stitch · **sl** = slip · **st(s)** = stitch(es) · **St st** = stockinette stitch · **tbl** = through the back loop · **tog** = together · **wyib** = with yarn in back of work · **wyif** = with yarn in front of work · **WS** = wrong side · **yo(s)** = yarn over(s)

Publisher's Info

Publisher: Lana Grossa GmbH, Gaimersheim, www.lanagrossa.com

Photographer: Patrick Wittmann.com