



www.lanagrossa.com

HOODED VEST · COOL WOOL & SILKHAIR PRINT

Design 42 - Filati Kids 11

HOODED VEST .

COOL WOOL & SILKHAIR PRINT

Design 42 - Filati Kids 11



www.lanagrossa.com

Size 116/122 (128/134, 140/146)

Instructions are given for first size. Figures in parenthesis refer to larger sizes. When only one figure is given, it applies to all sizes.

Materials: 350 (400, 450) g of Lana Grossa **Cool Wool** (100% pure wool; 160 m/50 g) in Powder Pink (**col 2018**); 100 (150, 150) g of Lana Grossa **Silkhair Print** (70% superkid mohair, 30% silk; 400 m/50 g) in Pink/Salmon/Lilac/Beige (**col 330**). Size 6 mm crochet hook.

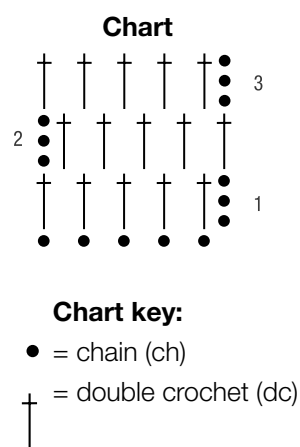
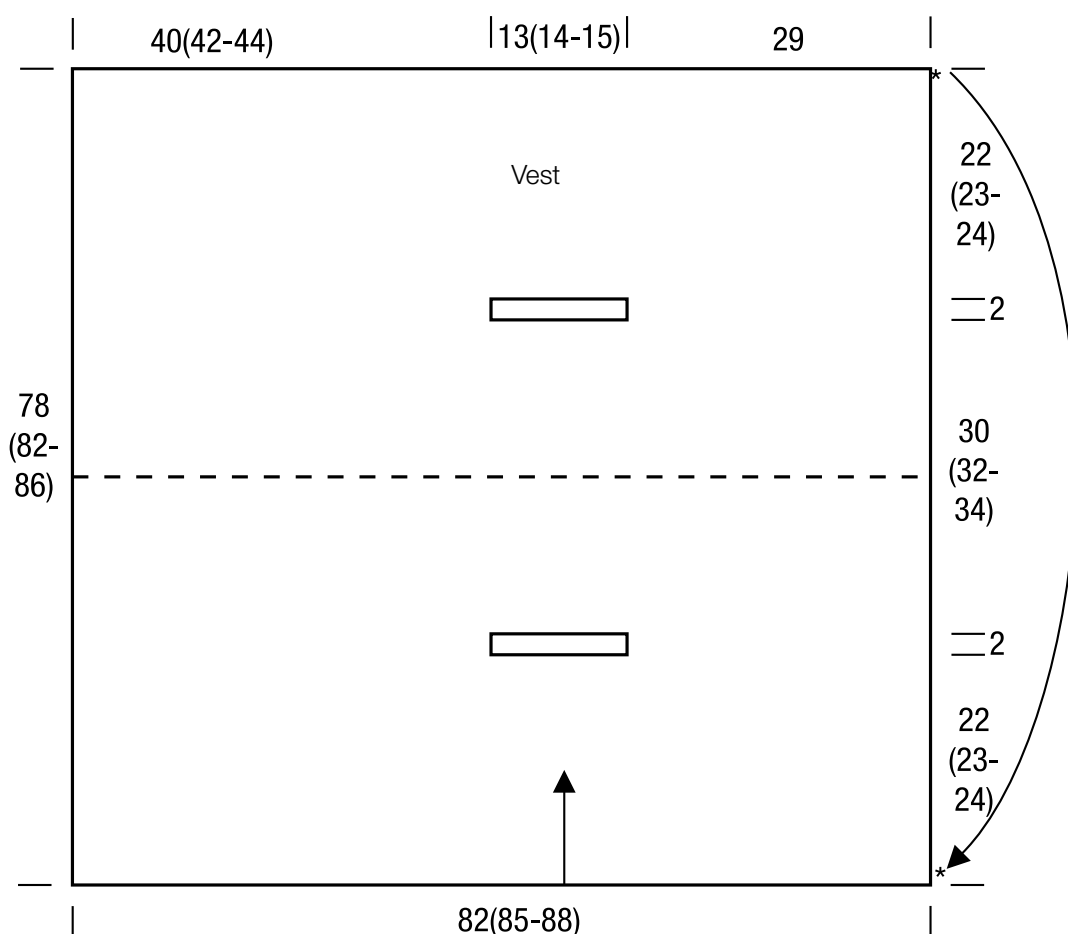
Note: Work with 1 strand of each yarn held tog throughout.

Crochet patt: Work according to chart. Numbers at right edge of chart indicate RS rows, number at left edge of chart indicates WS row. Work rows 1 – 3 once, then rep rows 2 and 3.

Gauge: 11 sts and 9 rows = 10 x 10 cm in crochet patt with size 6 mm hook and 1 strand of each yarn held tog.

Vest: Worked in one piece and side to side. Arrow on schematic shows direction of work. With size 6 mm hook and 1 strand of each yarn held tog, ch 89 (93, 97) + ch 3. Work in crochet patt according to chart until piece meas 22 (23, 24) cm from beg, ending with a WS row. Shape armhole: Next row (RS): Patt over 32 sts, leave next 14 (15, 16) sts unworked, work 14 (15, 16) sl st instead, patt to end. Next row (WS): Patt over 44 (47, 50) sts, ch 14 (15, 16), patt to end. Cont in patt across all sts for 30 (32, 34) cm, ending with a WS row. Shape 2nd armhole same as first. Cont in patt for 22 (23, 24) cm. Fasten off.

Finishing: Pin piece to measurements and block. Fold piece in half [see dashed line on schematic], matching * to *. Sew seam at top of hood.



Gauge Swatch

Before you begin ...

...make a gauge swatch. Use the recommended needles, yarns and pattern stitch for your gauge swatch. It should measure approx. 12 cm x 12 cm. Cast-on and bind-off rows, as well as selvage stitches should not be included in the measurement. Pin your swatch and block it as you would the finished pieces of the garment. Count stitches and rows over 10 cm. If your gauge swatch is too small, switch to larger needles. If your gauge swatch is too big, switch to smaller needles.



Abbreviations

beg = begin(ning) · **ch** = chain · **cont** = continue · **dec** = decreas(e)(ing) · **inc** = increas(e)(ing) · **k** = knit · **kwise** = as if to knit
meas = measures · **M1L** = lift strand between sts from front to back and knit this strand through the back loop · **M1R** = lift strand between sts from the back and knit this strand through the front loop · **patt** = pattern · **pm** = place marker · **p** = purl
pwise = as if to purl · **rem** = remain(ing) · **rep** = repeat(s) · **rev St st** = reverse stockinette stitch · **rnd(s)** = round(s) · **RS** = right side · **sc** = single crochet · **skp** = slip 1 stitch as if to knit, knit 1 stitch, pass slipped stitch over knitted stitch · **sk2p** = slip 1 stitch as if to knit, knit 2 together, pass slipped stitch over knitted stitch · **s2kp** = slip 2 stitches as if to knit, k 1 stitch, pass slipped stitches over knitted stitch · **sl** = slip · **st(s)** = stitch(es) · **St st** = stockinette stitch · **tbl** = through the back loop · **tog** = together · **wyib** = with yarn in back of work · **wyif** = with yarn in front of work · **WS** = wrong side · **yo(s)** = yarn over(s)

Publisher's Info

Publisher: Lana Grossa GmbH, Gaimersheim, www.lanagrossa.com

Photographer: Patrick Wittmann.com