

JACKET



JACKET

Size 36 – 40 (42 – 46)

Instructions are given for smaller size. Figure in parenthesis refers to larger size. When only one figure is given, it applies to both sizes.

Materials: 500 (550) g of Lana Grossa **Brigitte No. 2** (47% baby alpaca, 45% cotton, 8% Merino wool; 140 m/50 g) in Natural (**col 16**). Size 5.5, 6.5 and 7 mm needles; size 5.5 mm circular needle, 80 cm long.

Rib patt: K1, p1.

Rev St st: P on RS, k on WS.

St st: K on RS, p on WS.

Brioche rib: Work according to chart. Numbers at right edge of chart indicate RS rows, number at left edge of chart indicates WS row. Work to patt rep, work 2 sts between arrows for patt rep, work to end of chart. Work rows 1 – 3 once, then rep rows 2 and 3. **Note:** Slipped st and yo count as 1 st.

Gauges: 15.5 sts and 21 rows = 10 x 10 cm in rev St st on size 7 mm needles; 15.5 sts and 34 rows = 10 x 10 cm in brioche rib on size 6.5 mm needles.

Back: With size 5.5 mm needles cast on 102 (108) sts. Beg and end with a WS row, work in rib patt until piece meas 5 cm from cast-on. Change to size 7 mm needles. Work in rev St st for 42 cm, ending with a WS row. Shape armhole: Next RS (inc) row: Work in rev St st, inc 1 st at each end of row 104 (110) sts. Cont in rev St st, rep inc row every 10th row 3 times = 110 (116) sts. Work even until armhole meas 20 (22) cm, ending with a WS row. Shape shoulders: Bind off 10 sts at beg of next 2 rows, 11 (12) sts at beg of next 6 rows. Bind off rem 24 sts.

Left front: With size 5.5 mm needles cast on 41 (44) sts. Beg and end with a WS row, work in rib patt until piece meas 5 cm from cast-on. Change to size 7 mm needles. Work in rev St st

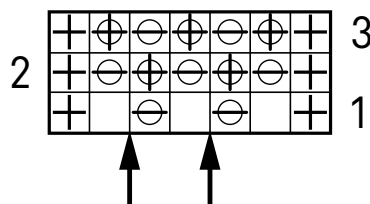
Chart key:

⊕ = selvage st

□ = k1

⊗ = make a yo, then sl next st pwise

⊕ = ktog slipped st with its yo

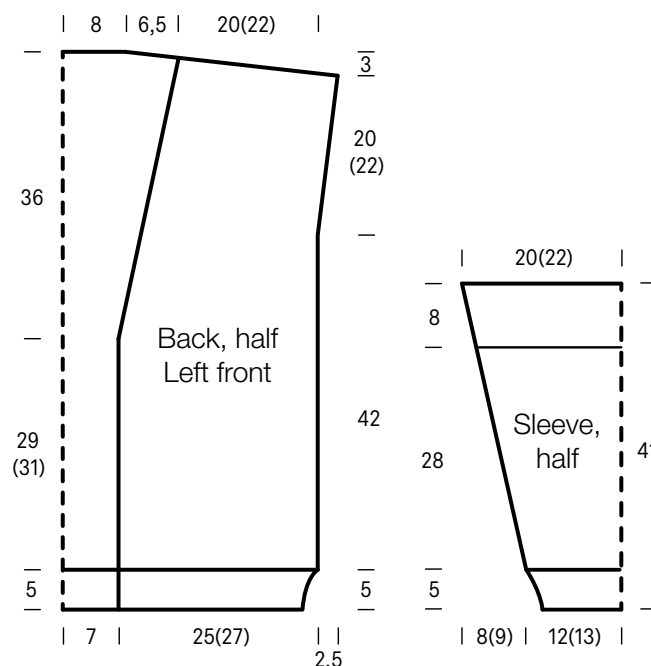


for 29 (31) cm, ending with a RS row. Shape front edge: Bind off 1 st at beg of next WS row, then every 6th row 9 times. **At same time**, when 42 cm have been worked in rev St st, work incs for armhole shaping at right edge same as for back = 35 (38) sts after front edge decs and armhole incs have been worked. Work even until armhole meas 20 (22) cm, ending with a WS row. Shape shoulder: At beg of RS rows, bind off 11 (12) sts 1 time, 12 (13) sts 2 times. No sts rem.

Right front: Work same as left front, reversing all shaping.

Sleeves: With size 5.5 mm needles cast on 40 (42) sts. Beg and end with a WS row, work in rib patt until piece meas 5 cm from cast-on. Change to size 6.5 mm needles. Work in brioche rib according to chart and shape sleeve as foll: Inc 1 st at each end of 3rd (11th) row, then every 8 (6)th row 11 (13) times = 64 (70) sts. Work increased sts into brioche rib. Work even until piece meas 34 cm from cast-on, ending with a WS row. Change to size 7 mm needles. Work [2 rows in rev St st, 2 rows in St st] 4 times, 2 rows in rev St st. Bind off all sts.

Finishing: Pin pieces to measurements and block. Sew shoulder seams. **Right front band:** With size 5.5 mm circular needle and RS facing, pick up and k 149 (153) sts evenly along right front edge. Next row (WS): Selvage st, * p1, k1; rep from * to last 2 sts, p1, selvage st. Cont in rib patt as established until band meas 6 cm from pick-up row. Bind off all sts in rib. Rep for left front band. Place markers 20 (22) cm down from shoulders on fronts and back. Sew on sleeves between markers. Sew side and sleeve seams.

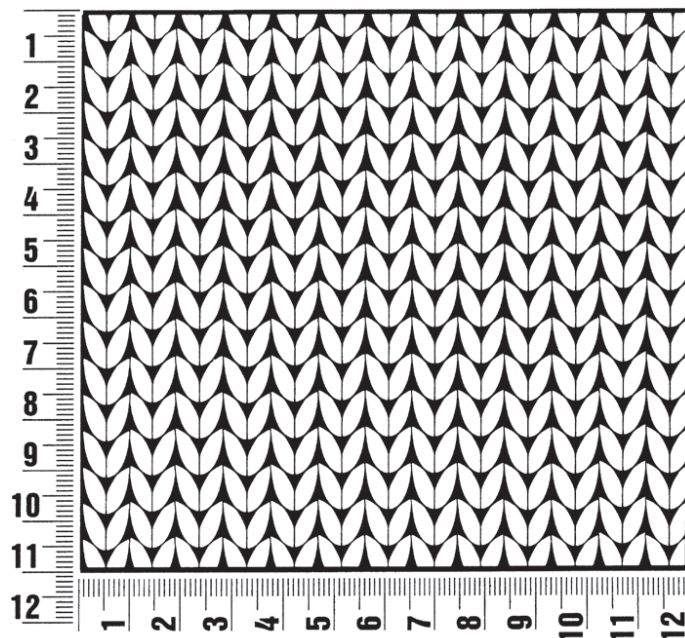


JACKET

Gauge Swatch

Before you begin ...

...make a gauge swatch. Use the recommended needles, yarns and pattern stitch for your gauge swatch. It should measure approx. 12 cm x 12 cm. Cast-on and bind-off rows, as well as selvedge stitches should not be included in the measurement. Pin your swatch and block it as you would the finished pieces of the garment. Count stitches and rows over 10 cm. If your gauge swatch is too small, switch to larger needles. If your gauge swatch is too big, switch to smaller needles.



Abbreviations

beg = begin(ning) · **ch** = chain · **cont** = continue · **dec** = decreas(e)(ing) · **inc** = increas(e)(ing) · **k** = knit · **kwise** = as if to knit
meas = measures · **M1L** = lift strand between sts from front to back and knit this strand through the back loop · **M1R** = lift strand between sts from the back and knit this strand through the front loop · **patt** = pattern · **pm** = place marker · **p** = purl
pwise = as if to purl · **rem** = remain(ing) · **rep** = repeat(s) · **rev St st** = reverse stockinette stitch · **rnd(s)** = round(s) · **RS** = right side · **sc** = single crochet · **skp** = slip 1 stitch as if to knit, knit 1 stitch, pass slipped stitch over knitted stitch · **sk2p** = slip 1 stitch as if to knit, knit 2 together, pass slipped stitch over knitted stitch · **s2kp** = slip 2 stitches as if to knit, k 1 stitch, pass slipped stitches over knitted stitch · **sl** = slip · **st(s)** = stitch(es) · **St st** = stockinette stitch · **tbl** = through the back loop · **tog** = together · **wyib** = with yarn in back of work · **wyif** = with yarn in front of work · **WS** = wrong side · **yo(s)** = yarn over(s)