



[www.lanagrossa.com](http://www.lanagrossa.com)

# WRAP · SILKHAIR PRINT

Design 68 – Filati Home 72



# WRAP · SILKHAIR PRINT

## Design 68 – Filati Home 72



www.lanagrossa.com

**Size** approx. 146 cm long, 73 cm wide

**Materials:** 250 g of Lana Grossa **Silkhair Print** (70% superkid mohair, 30% silk; 400 m/50 g) in Sun Yellow/Salmon/Strawberry/Cyclamen (**col 353**). Size 4 mm circular needle, 80 cm long.

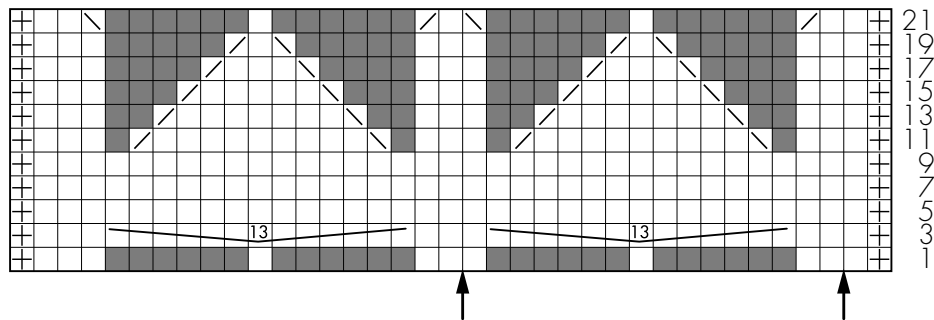
**Bubble stitch:** Work according to chart. Numbers at right edge of chart indicate RS rows; on WS rows, purl all sts. Work to patt rep, work sts between arrows for patt rep, work to end of chart. Work rows 1 – 22 once, then rep rows 3 – 22.

**Gauge:** 12 sts and 27.5 rows = 10 x 10 cm in bubble st on size 4 mm needles.

**Wrap:** With size 4 mm circular needle cast on 89 sts. Work bubble st according to chart until piece meas 146 cm from cast-on. Loosely bind off all sts.

**Finishing:** Carefully weave in all ends. Pin piece to measurements and block.

**Chart**



### Chart key:

- ⊕ = selvage st
- = k1
- ▤ = k2tog
- ▥ = skp: sl 1 kwise, k1, pass slipped st over knitted st
- = represent “no stitch” and is included to keep st count correct
- = ([k1, yo] 6 times, k1) in next st

## Gauge Swatch

### Before you begin ...

...make a gauge swatch. Use the recommended needles, yarns and pattern stitch for your gauge swatch. It should measure approx. 12 cm x 12 cm. Cast-on and bind-off rows, as well as selvage stitches should not be included in the measurement. Pin your swatch and block it as you would the finished pieces of the garment. Count stitches and rows over 10 cm. If your gauge swatch is too small, switch to larger needles. If your gauge swatch is too big, switch to smaller needles.



## Abbreviations

**beg** = begin(ning) · **ch** = chain · **cont** = continue · **dec** = decreas(e)(ing) · **inc** = increas(e)(ing) · **k** = knit · **kwise** = as if to knit  
**meas** = measures · **M1L** = lift strand between sts from front to back and knit this strand through the back loop · **M1R** = lift strand between sts from the back and knit this strand through the front loop · **patt** = pattern · **pm** = place marker · **p** = purl  
**pwise** = as if to purl · **rem** = remain(ing) · **rep** = repeat(s) · **rev St st** = reverse stockinette stitch · **rnd(s)** = round(s) · **RS** = right side · **sc** = single crochet · **skp** = slip 1 stitch as if to knit, knit 1 stitch, pass slipped stitch over knitted stitch · **sk2p** = slip 1 stitch as if to knit, knit 2 together, pass slipped stitch over knitted stitch · **s2kp** = slip 2 stitches as if to knit, k 1 stitch, pass slipped stitches over knitted stitch · **sl** = slip · **st(s)** = stitch(es) · **St st** = stockinette stitch · **tbl** = through the back loop · **tog** = together · **wyib** = with yarn in back of work · **wyif** = with yarn in front of work · **WS** = wrong side · **yo(s)** = yarn over(s)

### Publisher's Info

**Publisher:** Lana Grossa GmbH, Gaimersheim, www.lanagrossa.com

**Photographer:** © Herbert Dehn, www.herbertdehn.com