



www.lanagrossa.com

OVERALL · BABY SOFT
Design 51 – Filati Infanti 16

OVERALL · BABY SOFT

Design 51 – Filati Infanti 16



www.lanagrossa.com

Size 56/62 (68/74, 80/86)

Instructions are given for first size. Figures in parenthesis refer to larger sizes. When only one figure is given, it applies to all sizes.

Materials: 100 (100, 150) g of Lana Grossa **Baby Soft** (60% polyamide, 40% cotton; 150 m/50 g) in Beige (**col 21**), 50 g in White (**col 1**). Size 3.5 mm needles; size 3.5 mm circular needle, 40 cm long; two 15 mm buttons.

Moss stitch: Row 1: Selvage st, * k1, p1; rep from *, end selvage st. Row 2: Selvage st, work sts as they appear, end selvage st. Row 3: Selvage st, * p1, k1; rep from *, end selvage st. Row 4: As row 2. Rep rows 1 – 4 for moss stich.

St st: K on RS, p on WS; k every rnd.

Knee patch: Work in St st according to chart. Numbers at right edge of chart indicate RS rows, numbers at left edge of chart indicate WS rows. Work rows 1 – 24 once.

Full-fashion decrease: At beg of RS row, selvage st, 4 sts in moss st, skp; at end of RS row, work to last 7 sts, k2tog, 4 sts in moss st, selvage st.

Gauge: 21 sts and 29 rows/rnds = 10 x 10 cm in St st on size 3.5 mm needles.

Right leg: With size 3.5 mm needles and Beige cast on 46 (50, 54) sts. Work in moss st for 2 cm, ending with a WS row. Work in St st and shape leg as foll: Inc 1 st at each end of 7 (7, 9)th row then every 4th row 4 times (then every 6th row 3 times, then every 4th row 1 time / then every 6th row 4 times) = 56 (60, 64) sts. At same time, when piece meas 4 (4.5, 5) cm from cast-on, work knee patch according to chart centered over first half of leg. Work even until piece meas 11 (13, 15) cm from cast-on, ending with a WS row. Leave sts on needle and break yarn.

Left leg: With size 3.5 mm circular needle cast on 46 (50, 54) sts. Complete as given for right leg, reversing placement of knee patch. Leave sts on needle, do not break yarn.

Body: Next row (RS): K28 (30, 32) across left leg, place first marker, k28 (30, 32) to end of left leg, cast on 8 sts for gusset, k28 (30, 32) across right leg, place 2nd marker, k28 (30, 32) to end of right leg, cast on 8 sts for gusset, join for working in rnds, k28 (30, 32) to first marker = beg of rnd marker. Work St st in rnds and work decs to shape gussets on every 4th rnd 2 times as foll: * K to 1 st before gusset, skp, k to last gusset st, k2tog; rep from * once more, k to end of rnd = 120 (128, 136) sts. Work even until piece meas 17 (20, 23) cm from leg cast-on. Shape legs: Next dec rnd: Work in St st, skp after each marker and k2tog before each marker = 4 sts decreased and 116 (124, 132) sts rem. Cont in St st, rep dec rnd every 6th rnd 3 times = 104 (112, 120) sts. Work even until piece meas 21 (24, 27) cm from leg cast-on. Next rnd: Work 5 sts on either side of each marker in moss st, rem sts in St st. Cont in patt as established by last rnd until piece meas 23 (26, 29) cm from leg cast-on.

Divide for front and back: Place last 52 (56, 60) sts worked on holder for back = 52 (56, 60) sts rem for front. Work back and forth in rows across front sts only. **Front:** Shape armholes: Bind off 5 sts at beg of next 2 rows = 42 (46, 50) sts. Working full-fashion dec, dec 1 st at each end of every alt RS row 0 (0, 2) times, then every foll RS row 9 (9, 7) times = 24 (28, 32) sts. Work even in patt until piece meas 29 (33, 37) cm from leg cast-on, ending with a WS row. Work in moss st across all sts for 1 cm, ending with a WS row. Next RS (buttonhole) row: Work first 2 sts, [k2tog, yo] for buttonhole, work to last 4 sts, [k2tog, yo] for buttonhole, work to end. Work even until piece meas 31 (35, 39) cm from leg cast-on. Bind off all sts.

Back: Return 52 (56, 60) held back sts to needle and with RS facing rejoin yarn. Shape armholes: Bind off 5 sts at beg of next 2 rows = 42 (46, 50) sts. Working full-fashion dec, dec 1 st at each end of every alt RS row 5 (6, 7) times, then every foll RS row 4 (3, 2) times = 24 (28, 32) sts. Work even in patt until piece meas 33 (37, 41) cm from leg cast-on, ending with a WS row. Work in moss st across all sts for 2 cm, ending with a WS row. Shape neck: Next row (RS): Bind off center 8 (12, 16) sts = 8 sts rem for each strap. Working each side separately, work even in moss st until strap meas 11.5 cm in total length. Bind off all sts.

Finishing: Sew inseams. Sew on buttons.

OVERALL · BABY SOFT

Design 51 – Filati Infanti 16



www.lanagrossa.com

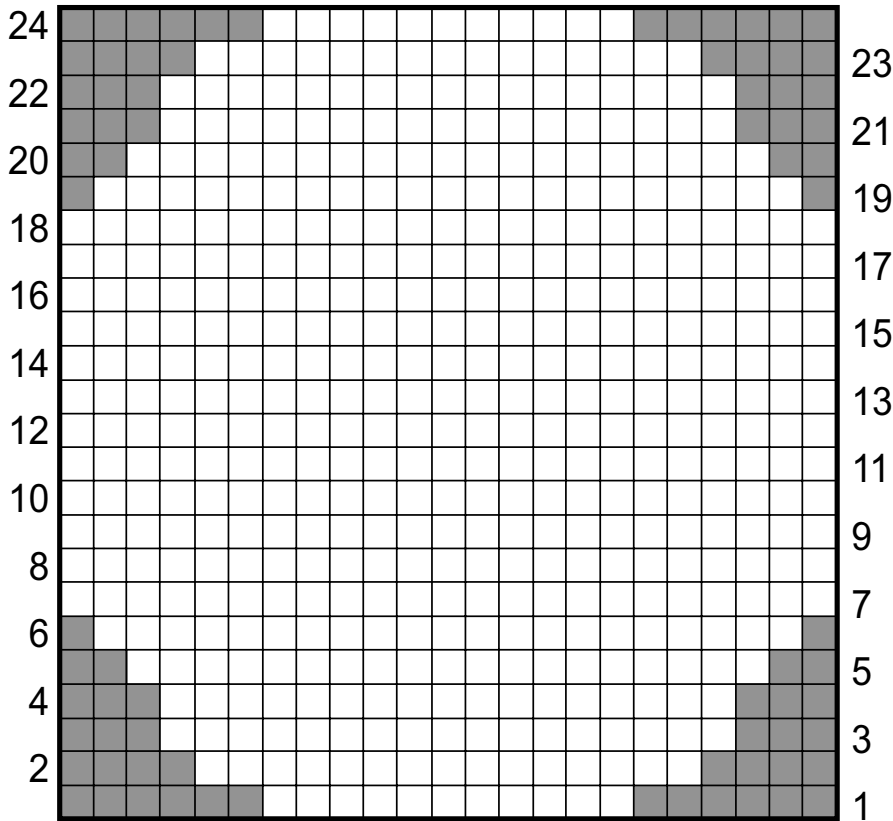
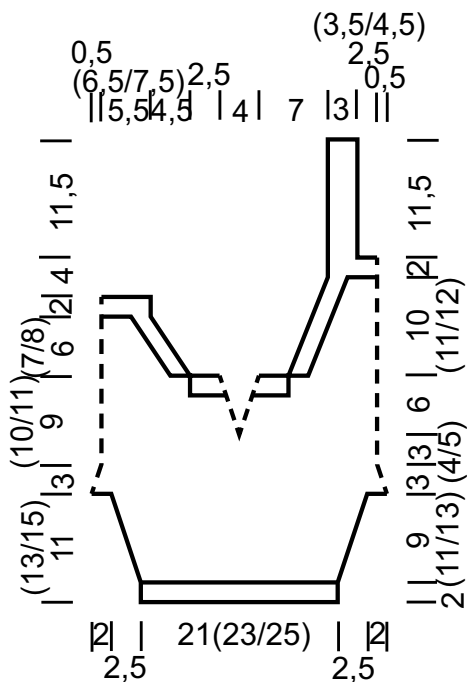


Chart key:

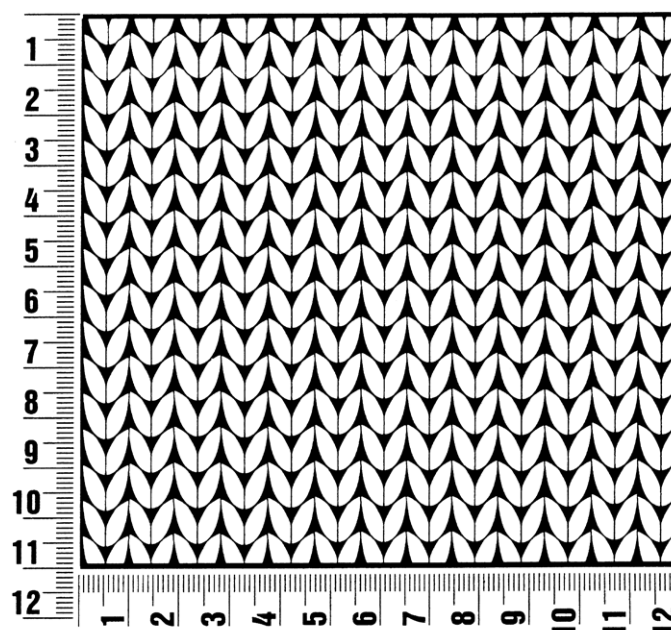
- = White
- = Beige



Gauge Swatch

Before you begin ...

...make a gauge swatch. Use the recommended needles, yarns and pattern stitch for your gauge swatch. It should measure approx. 12 cm x 12 cm. Cast-on and bind-off rows, as well as selvage stitches should not be included in the measurement. Pin your swatch and block it as you would the finished pieces of the garment. Count stitches and rows over 10 cm. If your gauge swatch is too small, switch to larger needles. If your gauge swatch is too big, switch to smaller needles.



Abbreviations

beg = begin(ning) · **ch** = chain · **cont** = continue · **dec** = decreas(e)(ing) · **inc** = increas(e)(ing) · **k** = knit · **kwise** = as if to knit
meas = measures · **M1L** = lift strand between sts from front to back and knit this strand through the back loop · **M1R** = lift strand between sts from the back and knit this strand through the front loop · **patt** = pattern · **pm** = place marker · **p** = purl
pwise = as if to purl · **rem** = remain(ing) · **rep** = repeat(s) · **rev St st** = reverse stockinette stitch · **rnd(s)** = round(s) · **RS** = right side · **sc** = single crochet · **skp** = slip 1 stitch as if to knit, knit 1 stitch, pass slipped stitch over knitted stitch · **sk2p** = slip 1 stitch as if to knit, knit 2 together, pass slipped stitch over knitted stitch · **s2kp** = slip 2 stitches as if to knit, k 1 stitch, pass slipped stitches over knitted stitch · **sl** = slip · **st(s)** = stitch(es) · **St st** = stockinette stitch · **tbl** = through the back loop · **tog** = together · **wyib** = with yarn in back of work · **wyif** = with yarn in front of work · **WS** = wrong side · **yo(s)** = yarn over(s)

Publisher's Info

Publisher: Lana Grossa GmbH, Gaimersheim, www.lanagrossa.com

Photographer: Charlotte Dyckerhoff/Frauke Volpert