



www.lanagrossa.com



PANTS · BABY SOFT

Design 57 – Filati Infanti 16

PANTS · BABY SOFT

Design 57 – Filati Infanti 16



www.lanagrossa.com

Size 68/74 (80/86, 92/98, 104/110)

Instructions are given for first size. Figures in parenthesis refer to larger sizes. When only one figure is given, it applies to all sizes.

Materials: 50 (100, 100, 100) g of Lana Grossa **Baby Soft** (60% polyamide, 40% cotton; 150 m/50 g) in Beige (col 21). Size 4 mm needles; size 4 mm circular needle, 40 cm long; 2-cm wide waistband elastic.

Rib patt: K1, p1.

St st: K on RS, p on WS; k every rnd.

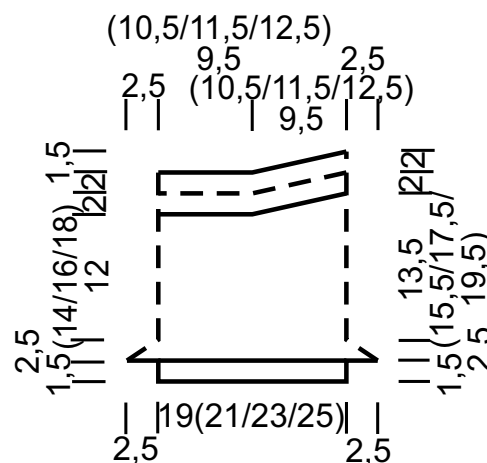
Gauge: 17 sts and 34 rows/rnds = 10 x 10 cm in St st on size 4 mm needles.

Right leg: With size 4 mm needles cast on 34 (38, 42, 44) sts. Work in rib patt for 1.5 cm, ending with a WS row. Leave sts on needle and break yarn.

Left leg: With size 4 mm circular needle cast on 34 (38, 42, 44) sts. Complete as given for right leg, leave sts on needle, do not break yarn.

Body: Next row (RS): K17 (19, 21, 22) across left leg, place first marker, k17 (19, 21, 22) to end of left leg, cast on 8 sts for gusset, k17 (19, 21, 22) across right leg, place 2nd marker, k17 (19, 21, 22) to end of right leg, cast on 8 sts for gusset, join for working in rnds, k17 (19, 21, 22) to first marker = beg of rnd marker. Work St st in rnds and work decs to shape gussets on every alt rnd as foll: * K to 1 st before gusset, skp, k to last gusset st, k2tog; rep from * once more, k to end of rnd = 68 (76, 84, 88) sts after all gusset sts have been decreased. Work even until piece meas 16 (18, 20, 22) cm from leg cast-on. Next, shape back of pants using short-rows as foll: At end of rnd, turn. Next row (WS): Yo, p to next marker, turn. * Next row (RS): Yo, k to 3 sts before prev yo, turn. Next row (WS): Yo, p to 3 sts before prev yo, turn. Rep from * 2 more times. Next row (RS): Yo, k to marker and work each yo tog with next st as k2tog (remove and replace marker as needed), continue knitting to 1 st before next marker (remove and replace marker as needed), skp next st and yo, [k2, skp next st and yo] 3 times, continue knitting to next = beg of rnd marker. Work in rib patt until piece meas 18 (20, 22, 24) cm from leg cast-on, measured along front of pants. Purl 1 rnd for turning ridge. Work in rib patt for another 2 cm. Bind off all sts.

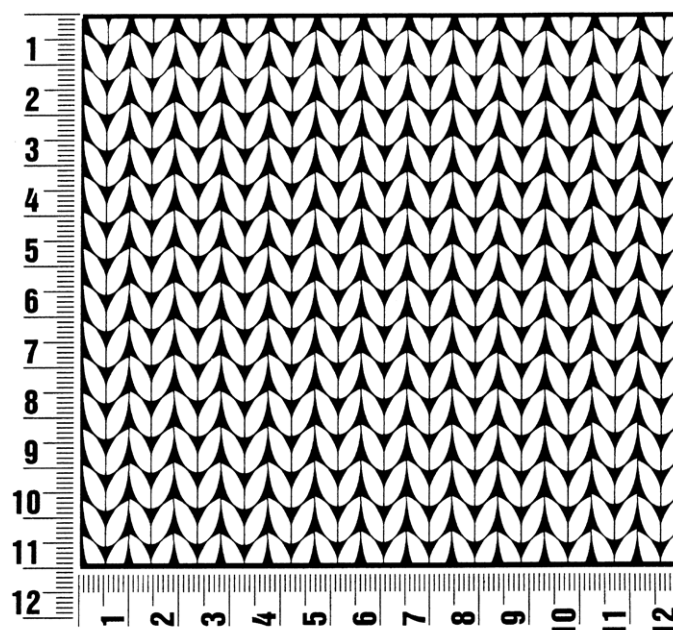
Finishing: Sew inseams. Fold waistband to inside at turning ridge and slip st in place to form casing, leaving small opening free. Thread waistband elastic through opening, close opening.



Gauge Swatch

Before you begin ...

...make a gauge swatch. Use the recommended needles, yarns and pattern stitch for your gauge swatch. It should measure approx. 12 cm x 12 cm. Cast-on and bind-off rows, as well as selvage stitches should not be included in the measurement. Pin your swatch and block it as you would the finished pieces of the garment. Count stitches and rows over 10 cm. If your gauge swatch is too small, switch to larger needles. If your gauge swatch is too big, switch to smaller needles.



Abbreviations

beg = begin(ning) · **ch** = chain · **cont** = continue · **dec** = decreas(e)(ing) · **inc** = increas(e)(ing) · **k** = knit · **kwise** = as if to knit
meas = measures · **M1L** = lift strand between sts from front to back and knit this strand through the back loop · **M1R** = lift strand between sts from the back and knit this strand through the front loop · **patt** = pattern · **pm** = place marker · **p** = purl
pwise = as if to purl · **rem** = remain(ing) · **rep** = repeat(s) · **rev St st** = reverse stockinette stitch · **rnd(s)** = round(s) · **RS** = right side · **sc** = single crochet · **skp** = slip 1 stitch as if to knit, knit 1 stitch, pass slipped stitch over knitted stitch · **sk2p** = slip 1 stitch as if to knit, knit 2 together, pass slipped stitch over knitted stitch · **s2kp** = slip 2 stitches as if to knit, k 1 stitch, pass slipped stitches over knitted stitch · **sl** = slip · **st(s)** = stitch(es) · **St st** = stockinette stitch · **tbl** = through the back loop · **tog** = together · **wyib** = with yarn in back of work · **wyif** = with yarn in front of work · **WS** = wrong side · **yo(s)** = yarn over(s)

Publisher's Info

Publisher: Lana Grossa GmbH, Gaimersheim, www.lanagrossa.com

Photographer: Charlotte Dyckerhoff/Frauke Volpert