



[www.lanagrossa.com](http://www.lanagrossa.com)

# **PULLOVER · FOURSEASON**

Design 76 – Filati Infanti 16

# PULLOVER · FOURSEASON

## Design 76 – Filati Infanti 16



www.lanagrossa.com

**Size** 68/74 (92/98, 110/116)

Instructions are given for first size. Figures in parenthesis refer to larger sizes. When only one figure is given, it applies to all sizes.

**Materials:** 100 (150, 150) g of Lana Grossa **Fourseason** (45% extrafine organic Merino wool, 40% organic cotton, 15% recycled cashmere; 105 m/50 g) in Yellow (**col 8**). Size 4.5 mm needles; size 4.5 mm circular needle, 40 cm long; cable needle [cn].

**Rib patt:** K1, p1.

**Cable patt:** Multiple of 10. Work according to chart. Chart is worked both in rnds and in rows. When working in rnds, work all rnds from right to left. When working in rows, read odd-numbered rows from right to left. On all rnds/rows not shown on chart, work sts as they appear.

**St st:** K on RS, p on WS.

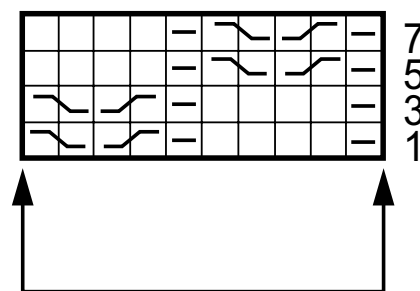
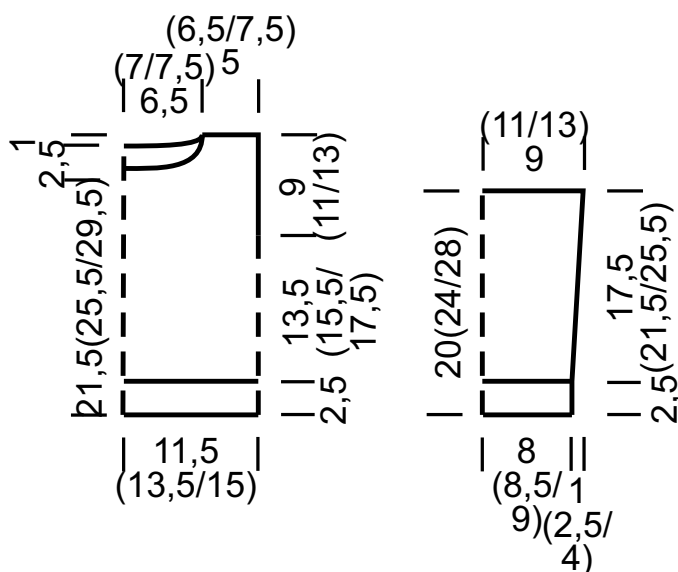
**Gauges:** On size 4.5 mm needles: 15 sts and 24 rows/rnds = 10 x 10 cm in cable patt; 18 sts and 24 rows = 10 x 10 cm in St st.

**Pullover:** Body is worked in one piece in the rnd to underarm. With size 4.5 mm circular needle cast on 70 (80, 90) sts. Place beg of rnd marker and join for working in rnds. Work in rib patt for 2.5 cm. Work in cable patt according to chart until piece meas 16 (18, 20) cm from cast-on. Divide for front and back: Place last 35 (40, 45) sts worked on holder for back = 35 (40, 45) sts rem for front. Work back and forth in rows across front sts only. **Front:** Next row (RS): Cable cast on 1 st and work as

selvage st, work in cable patt to end of row, backloop cast on 2 sts = 38 (43, 48) sts. Next row (WS): Selvage st, k1, work in cable patt to last st, selvage st. Cont in patt as established until piece meas 21.5 (25.5, 29.5) cm from cast-on, ending with a WS row. Shape neck: Next row (RS): Bind off center 8 (9, 10) sts. Working each side separately, bind off 3 sts at each neck edge 1 time, 2 sts 1 time, 1 st 1 time = 9 (11, 13) sts rem for each side. Cont in patt until piece meas 25 (29, 33) cm from cast-on. Bind off rem 9 (11, 13) sts for each shoulder. **Back:** Return 35 (40, 45) held back sts to needle and with RS facing, rejoin yarn. Work same as front until piece meas 24 (28, 32) cm from cast-on, ending with a WS row. Shape neck: Next row (RS): Bind off center 20 (21, 22) sts = 9 (11, 13) sts rem for each side. Working each side separately, cont in patt until piece meas 1 cm for neck bind-off row. Bind off rem 9 (11, 13) sts for each shoulder.

**Sleeves:** With size 4.5 mm needles cast on 32 (34, 36) sts. Work in rib patt for 2.5 cm, ending with a WS row. Next row (RS): Selvage st, 12 (13, 14) sts in St st, work first 6 sts of cable patt, 12 (13, 14) sts in St st, selvage st. Cont in patt as established and shape sleeve as foll: Inc 1 st at each end of 15 (11, 9)th row worked in patt, then every foll 14th row 1 time (then every 10th row 1 time, then every 8th row 3 times / then every 8th row 6 times) = 36 (44, 50) sts. Cont in patt until piece meas 20 (24, 28) cm from cast-on. Bind off all sts.

**Finishing:** Pin pieces to measurements and block. Sew shoulder seams. **Neckband:** With size 4.5 mm circular needle, pick up and k 56 (60, 64) sts evenly around neck edge. Place beg of rnd marker and join for working in rnds. Work in rib patt for 2.5 cm. Bind off all sts in rib.



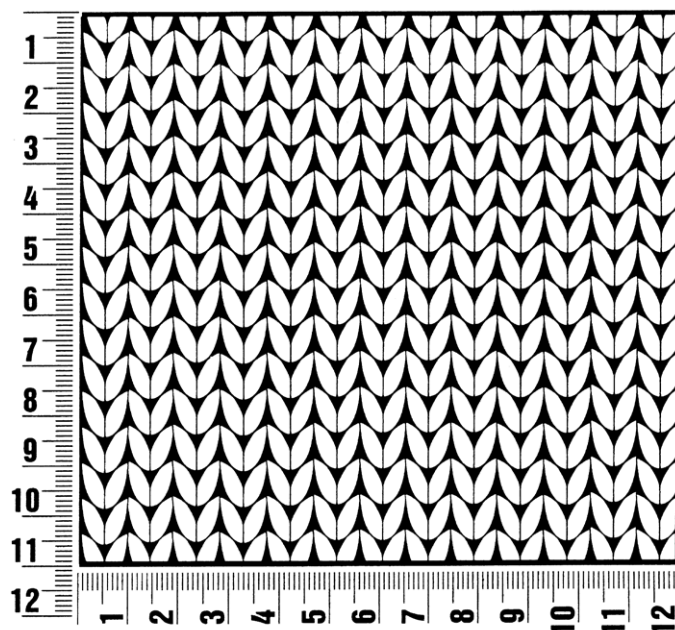
### Chart key:

- = k1
- ▢ = p1
- ▣ = sl 1 st to cn and hold in front of work, k1, then k1 from cn
- ▤ = sl 1 st to cn and hold in back of work, k1, then k1 from cn

## Gauge Swatch

### Before you begin ...

...make a gauge swatch. Use the recommended needles, yarns and pattern stitch for your gauge swatch. It should measure approx. 12 cm x 12 cm. Cast-on and bind-off rows, as well as selvage stitches should not be included in the measurement. Pin your swatch and block it as you would the finished pieces of the garment. Count stitches and rows over 10 cm. If your gauge swatch is too small, switch to larger needles. If your gauge swatch is too big, switch to smaller needles.



## Abbreviations

**beg** = begin(ning) · **ch** = chain · **cont** = continue · **dec** = decreas(e)(ing) · **inc** = increas(e)(ing) · **k** = knit · **kwise** = as if to knit  
**meas** = measures · **M1L** = lift strand between sts from front to back and knit this strand through the back loop · **M1R** = lift strand between sts from the back and knit this strand through the front loop · **patt** = pattern · **pm** = place marker · **p** = purl  
**pwise** = as if to purl · **rem** = remain(ing) · **rep** = repeat(s) · **rev St st** = reverse stockinette stitch · **rnd(s)** = round(s) · **RS** = right side · **sc** = single crochet · **skp** = slip 1 stitch as if to knit, knit 1 stitch, pass slipped stitch over knitted stitch · **sk2p** = slip 1 stitch as if to knit, knit 2 together, pass slipped stitch over knitted stitch · **s2kp** = slip 2 stitches as if to knit, k 1 stitch, pass slipped stitches over knitted stitch · **sl** = slip · **st(s)** = stitch(es) · **St st** = stockinette stitch · **tbl** = through the back loop · **tog** = together · **wyib** = with yarn in back of work · **wyif** = with yarn in front of work · **WS** = wrong side · **yo(s)** = yarn over(s)

### Publisher's Info

**Publisher:** Lana Grossa GmbH, Gaimersheim, www.lanagrossa.com

**Photographer:** Charlotte Dyckerhoff/Frauke Volpert