



www.lanagrossa.com



HAT · FOURSEASON

Design 71 – Filati Infanti 16

HAT · FOURSEASON

Design 71 – Filati Infanti 16



www.lanagrossa.com

Size To fit 37-39 (40-42, 43-45) cm head circumference
Instructions are given for first size. Figures in parenthesis refer to larger sizes. When only one figure is given, it applies to all sizes.

Materials: 50 g each of Lana Grossa **Fourseason** (45% extrafine organic Merino wool, 40% organic cotton, 15% recycled cashmere; 105 m/50 g) in Green (**col 7**) and Yellow (**col 8**). One set size 4.5 mm double-pointed needles [dpns].

Rib patt: K1, p1.

St st in rnds: K every rnd.

Two-color star stitch: Multiple of 4. Work according to chart. Numbers at right edge of chart indicate rnds. Work all rnds from right to left. Work 4-st patt rep between arrows around. Work rnds 1 – 8 once, then work rnds 1 – 6 once more for a total of 14 rnds. Work [2 rnds Green, 2 rnds Yellow] 3 times, end with 2 rnds Green.

Gauges: On size 4.5 mm needles: 22.5 sts and 26 rnds = 10 x 10 cm in St st; 25 sts and 29 rnds = 10 x 10 cm in two-col star st.

Hat: With size 4.5 mm dpns cast on 80 (88, 96) sts. Arrange sts evenly on 4 needles = 20 (22, 24) sts per needle, place beg of rnd marker and join for working in rnds. Work in rib patt for 3.5 cm. Work 14 rnds in two-col star st. Using Green only, work in St st until piece meas 11 (12, 13) cm from cast-on. Shape crown: Next dec rnd: Work in St st, dec 8 sts evenly around = 72 (80, 88) sts. Mark these decreased sts. Cont in St st, rep dec rnd every alt rnd 8 (9, 10) more times, always working decs at markers, that is: knit to 1 st before marked st, k2tog = 8 sts. Cut yarn, draw yarn end through rem sts and pull tight.

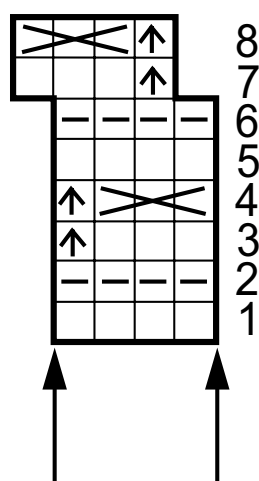


Chart key:

- = k1
- ◻ = p1
- ⬆ = sl 1 pwise wyib
- ⊞ = (p3tog, k3tog, p3tog) into same 3 sts tog = 3 sts

Gauge Swatch

Before you begin ...

...make a gauge swatch. Use the recommended needles, yarns and pattern stitch for your gauge swatch. It should measure approx. 12 cm x 12 cm. Cast-on and bind-off rows, as well as selvage stitches should not be included in the measurement. Pin your swatch and block it as you would the finished pieces of the garment. Count stitches and rows over 10 cm. If your gauge swatch is too small, switch to larger needles. If your gauge swatch is too big, switch to smaller needles.



Abbreviations

beg = begin(ning) · **ch** = chain · **cont** = continue · **dec** = decreas(e)(ing) · **inc** = increas(e)(ing) · **k** = knit · **kwise** = as if to knit
meas = measures · **M1L** = lift strand between sts from front to back and knit this strand through the back loop · **M1R** = lift strand between sts from the back and knit this strand through the front loop · **patt** = pattern · **pm** = place marker · **p** = purl
pwise = as if to purl · **rem** = remain(ing) · **rep** = repeat(s) · **rev St st** = reverse stockinette stitch · **rnd(s)** = round(s) · **RS** = right side · **sc** = single crochet · **skp** = slip 1 stitch as if to knit, knit 1 stitch, pass slipped stitch over knitted stitch · **sk2p** = slip 1 stitch as if to knit, knit 2 together, pass slipped stitch over knitted stitch · **s2kp** = slip 2 stitches as if to knit, k 1 stitch, pass slipped stitches over knitted stitch · **sl** = slip · **st(s)** = stitch(es) · **St st** = stockinette stitch · **tbl** = through the back loop · **tog** = together · **wyib** = with yarn in back of work · **wyif** = with yarn in front of work · **WS** = wrong side · **yo(s)** = yarn over(s)

Publisher's Info

Publisher: Lana Grossa GmbH, Gaimersheim, www.lanagrossa.com

Photographer: Charlotte Dyckerhoff/Frauke Volpert