



www.lanagrossa.com

PULLOVER • ABOUT BERLIN BULKY

Design 04 – Filati Lookbook 08

PULLOVER • ABOUT BERLIN BULKY

Design 04 – Filati Lookbook 08



Size 36/38 (40/42, 44)

Instructions are given for first size. Figures in parenthesis refer to larger sizes. When only one figure is given, it applies to all sizes.

Materials: 650 (700, 750) g of Lana Grossa **About Berlin Bulky** (50% cotton, 50% Micromodal; 47 m/50 g) in Mandarin/Dark Grey/Light Red/Rosewood (**col 103**). Size 8 and 9 mm needles; size 8 mm circular needle, 40 cm long.

Twisted rib in rows: Multiple of 2 + 2 selvage sts. **Row 1 (RS):** Selvage st, * k1tbl, p1; rep from *, end selvage st. **Row 2 (WS):** Selvage st, * k1tbl, p1tbl; rep from *, end selvage st. Rep rows 1 and 2.

Twisted rib in rnds: Multiple of 2. **Rnd 1:** * K1tbl, p1; rep from * around. **Rnd 2:** * K1tbl, p1tbl; rep from * around. Rep rnds 1 and 2.

Garter ridges: **Row 1 (RS):** Knit. **Row 2 (WS):** Knit. **Row 3 (RS):** Knit. **Row 4 (WS):** Purl. Rep rows 1 – 4.

Two-stitch selvage: **On RS row,** sl 1 pwise wyib, k1, patt to last 2 sts, k1, sl 1 pwise wyib. **On WS row,** p1, sl 1 pwise wyif, patt to last 2 sts, sl 1 pwise wyif, p1.

Full-fashion decrease: **At beg of RS row,** two-stitch selvage, p1, k2tog; **at end of RS row,** work to last 4 sts, skp, p1, two-stitch selvage.

Gauge: 10 sts and 18 rows = 10 x 10 cm in garter ridges on size 9 mm needles.

Back: With size 8 mm needles cast on 55 (59, 63) sts. Next row (WS): Selvage st, p1tbl, * k1tbl, p1tbl; rep from *, end selvage st. Cont in twisted rib as established until piece meas 7 cm from cast-on, ending with a WS row. Change to size 9 mm needles. Work garter ridges until piece meas 36 cm from cast-on, ending with a WS row. Shape raglan: Working full-fashion dec, dec 1 st at each end of next RS row, then [every foll RS row 2 times, then every alt RS row 1 time] 3 (2, 2) times, then every foll RS row 2 (7, 9) times = 31 sts rem. Work even until piece meas 54 (55, 56) cm from cast-on. Bind off all sts.

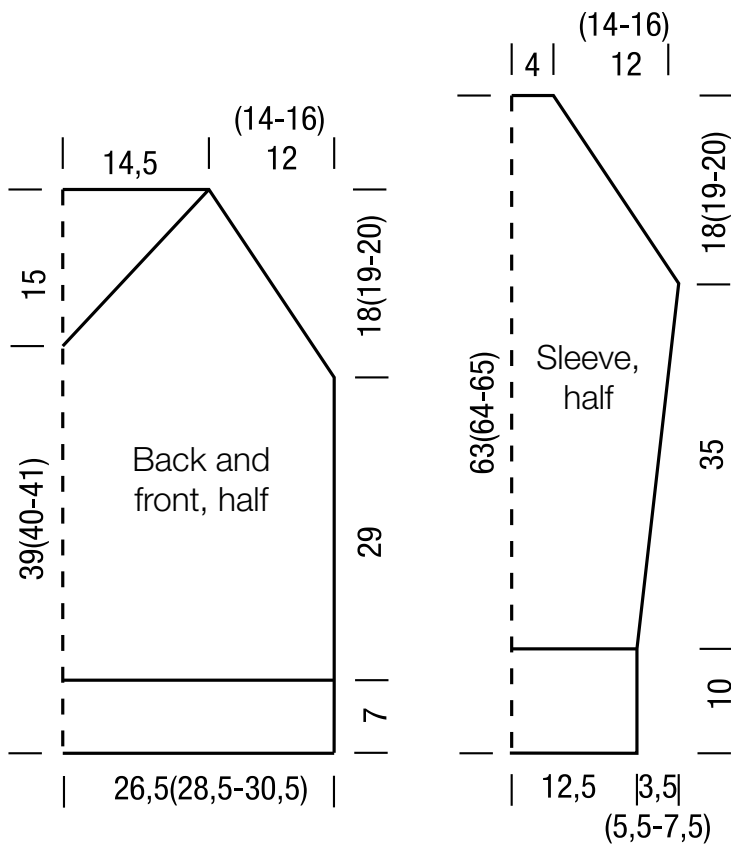
Front: With size 8 mm needles cast on 55 (59, 63) sts. Next row (WS): Selvage st, k1tbl, * p1tbl, k1tbl; rep from *, end selvage st. Cont in twisted rib as established until piece meas 7 cm from cast-on, ending with a WS row. Change to size 9 mm needles. Work garter ridges until piece meas 36 cm from cast-on, ending with a WS row. Work raglan shaping same as for back. **At same time,** when piece meas 39 (40, 41) cm from cast-on, shape V-neck as foll: Next row (RS): Place center st on holder. Working each side separately and working a two-stitch selvage at each neck edge, work full-fashion dec at each neck edge every RS row 12 times. Work even until piece meas 54 (55, 56) cm from cast-on. Bind off rem 3 sts for each shoulder.

Sleeves: With size 8 mm needles cast on 25 sts. Next row (WS): Selvage st, p1tbl, * k1tbl, p1tbl; rep from *, end selvage st. Cont in twisted rib as established until piece meas 10 cm from cast-on, ending with a WS row. Change to size 9 mm needles. Work garter ridges and shape sleeve as foll: Inc 1 st at each end of 13 (11, 11)th row, then every 12th row 3 times (then every 10th row 2 times, then every 8th row 3 times / then every 8th row 3 times, then every 6th row 4 times) = 33 (37, 41) sts. Work even until piece meas 45 cm from cast-on, ending with a WS row. Shape sleeve cap: Working full-fashion dec, dec 1 st at each end of next RS row, then [every foll RS row 2 times, then every alt RS row 1 time] 3 (2, 2) times, then every foll RS row 2 (7, 9) times = 9 sts rem. Work even until piece meas 63 (64, 65) cm from cast-on. Bind off all sts.

Finishing: Pin pieces to measurements and block. Sew raglan, side and sleeve seams. **Neckband:** With size 8 mm circular needle, pick up and k 94 sts evenly around neck edge including st on holder. Place beg of rnd marker and join for working in rnds. With st at bottom V as a knit st, work twisted rib in rnds and work double dec at center V on next 3 rnds as foll: Work to 1 st before center V st, sl 2 kwise, k1, pass slipped sts over knitted st. Work 1 rnd even, then bind off all sts in rib.

PULLOVER • ABOUT BERLIN BULKY

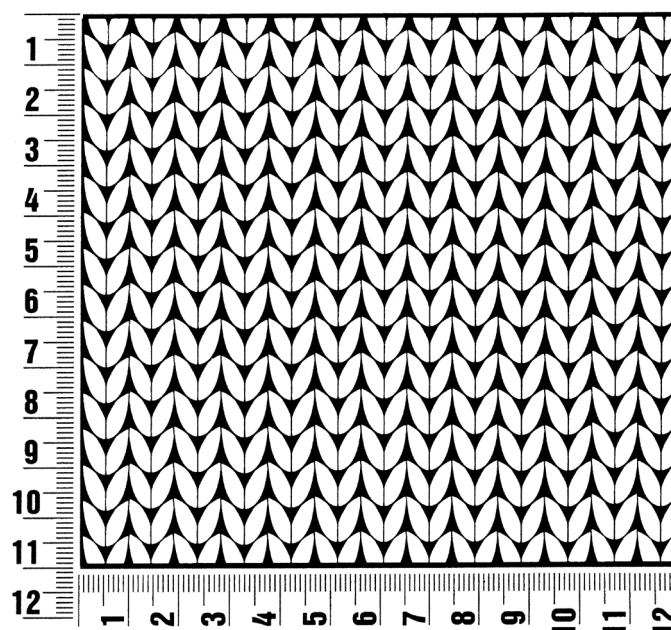
Design 04 – Filati Lookbook 08



Gauge Swatch

Before you begin ...

...make a gauge swatch. Use the recommended needles, yarns and pattern stitch for your gauge swatch. It should measure approx. 12 cm x 12 cm. Cast-on and bind-off rows, as well as selvage stitches should not be included in the measurement. Pin your swatch and block it as you would the finished pieces of the garment. Count stitches and rows over 10 cm. If your gauge swatch is too small, switch to larger needles. If your gauge swatch is too big, switch to smaller needles.



Abbreviations

beg = begin(ning) · **ch** = chain · **cont** = continue · **dec** = decreas(e)(ing) · **inc** = increas(e)(ing) · **k** = knit · **kwise** = as if to knit
meas = measures · **M1L** = lift strand between sts from front to back and knit this strand through the back loop · **M1R** = lift strand between sts from the back and knit this strand through the front loop · **patt** = pattern · **pm** = place marker · **p** = purl
pwise = as if to purl · **rem** = remain(ing) · **rep** = repeat(s) · **rev St st** = reverse stockinette stitch · **rnd(s)** = round(s) · **RS** = right side · **sc** = single crochet · **skp** = slip 1 stitch as if to knit, knit 1 stitch, pass slipped stitch over knitted stitch · **sk2p** = slip 1 stitch as if to knit, knit 2 together, pass slipped stitch over knitted stitch · **s2kp** = slip 2 stitches as if to knit, k 1 stitch, pass slipped stitches over knitted stitch · **sl** = slip · **st(s)** = stitch(es) · **St st** = stockinette stitch · **tbl** = through the back loop · **tog** = together · **wyib** = with yarn in back of work · **wyif** = with yarn in front of work · **WS** = wrong side · **yo(s)** = yarn over(s)

Publisher's Info

Publisher: Lana Grossa GmbH, Gaimersheim, www.lanagrossa.com

Photographer: Wilfried Wulff, www.wilfriedwulff.com