

COCOON VEST



COCOON VEST

Size One size

Materials: 600 g of Lana Grossa Tropic (70% cotton, 30% Merino wool; 125 m/50 g) in Dove Blue/Lavender/Grey-Green/Dark Jeans/Emerald/Light Green/Red-Brown (col 4). Size 4.5 mm needles; size 3.5 mm circular needle, 120 cm long.

Lace patt: Work according to chart. Multiple of 30 + 2 selvage sts (not shown on chart). Numbers at right edge of chart indicate RS rows; on WS rows, work sts as they appear or according to chart key, knit all yos. Work rows 1 – 46 once, then rep rows 3 – 46.

Selvage stitches: On every row: Knit first and last st.

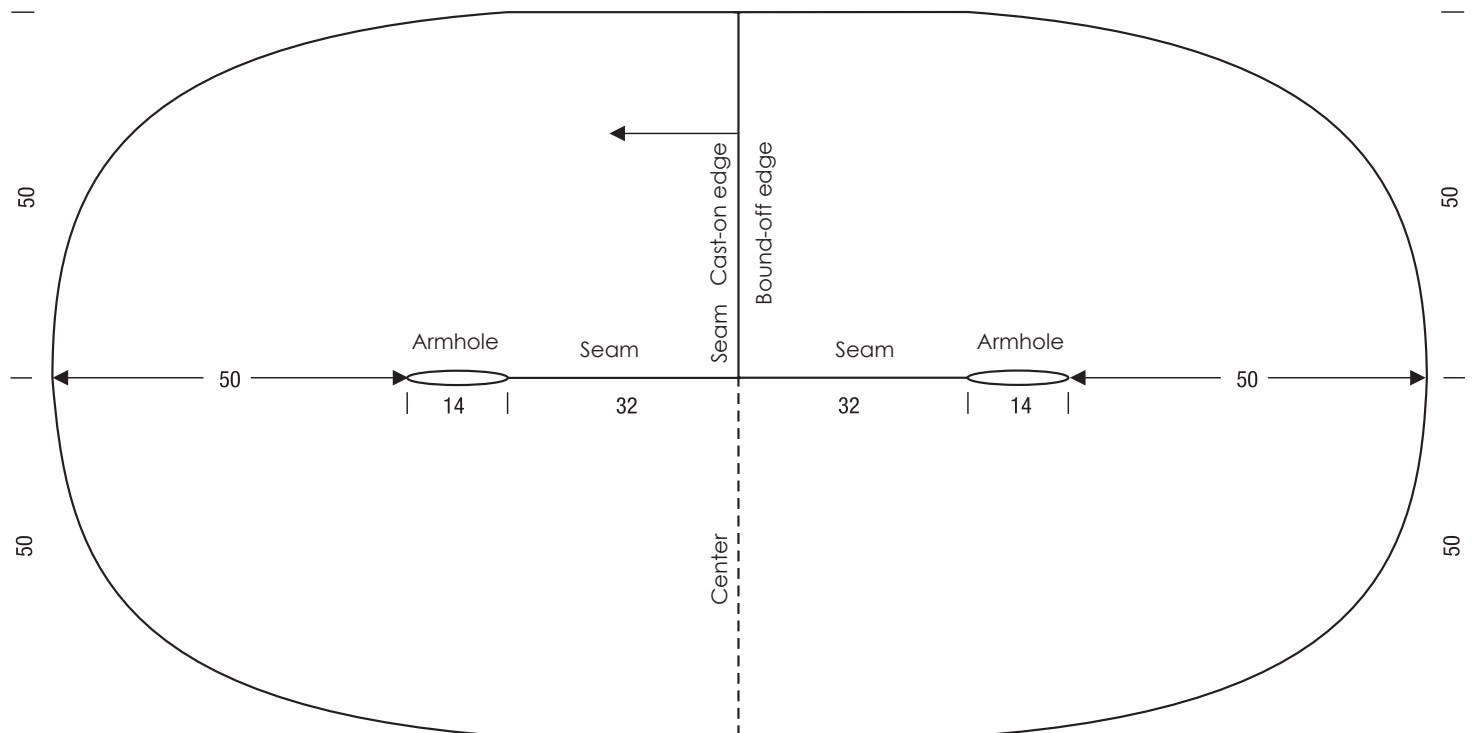
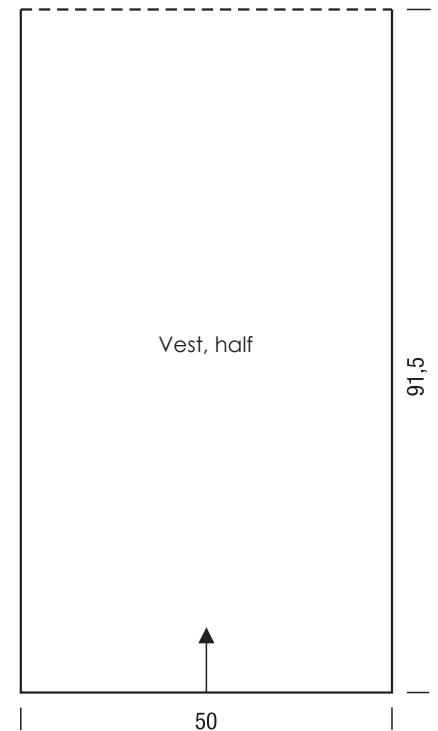
Garter st in rnds: Purl 1 rnd, knit 1 rnd alternately throughout.

Gauge: 18 sts and 29 rows = 10 x 10 cm in lace patt on size 4.5 mm needles.

Note: Vest is worked in one piece as a rectangle which is folded and seamed during finishing to give it its shape.

Vest: With size 4.5 mm needles cast on 92 sts. Purl 1 WS row. Next row (RS): K1 for selvage st, work row 1 of lace patt chart over next 90 sts (= 3 patt reps), k1 for selvage st. Maintaining selvage sts, cont to foll chart through row 46, then work rows [3 – 46] 11 more times = 530 rows and piece meas approx. 183 cm from cast-on. Bind off all sts.

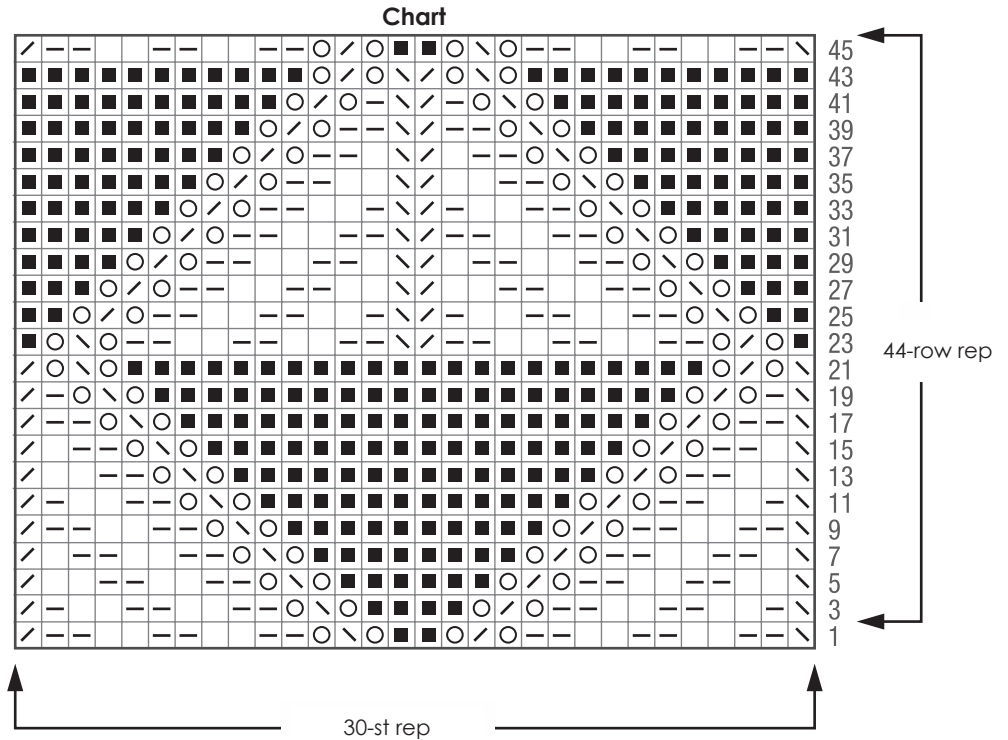
Finishing: Pin piece to measurements and block. Mark center of piece. Referring to assembly diagram, sew cast-on edge to bound-off edge with marked center forming the continuation of this seam. Sew seam over 32 cm, leaving rem 14 cm open for armholes. With size 3.5 mm circular needle, pick up and k 475 sts evenly around entire outer edge. Place beg of rnd marker and join for working in rnds. Work in garter st for 10 cm. Bind off all sts.



COCOON VEST

Chart key:

- = k1
- ◻ = p1
- = k1 on RS and WS (garter st)
- = yo on RS, k1 on WS
- ⊠ = k2tog
- ⊞ = skp: sl 1 kwise, k1, pass slipped st over knitted st



Gauge Swatch

Before you begin ...

...make a gauge swatch. Use the recommended needles, yarns and pattern stitch for your gauge swatch. It should measure approx. 12 cm x 12 cm. Cast-on and bind-off rows, as well as selvage stitches should not be included in the measurement. Pin your swatch and block it as you would the finished pieces of the garment. Count stitches and rows over 10 cm. If your gauge swatch is too small, switch to larger needles. If your gauge swatch is too big, switch to smaller needles.

Abbreviations

beg = begin(ning) · **ch** = chain · **cont** = continue · **dec** = decreas(e)(ing) · **inc** = increas(e)(ing) · **k** = knit · **kwise** = as if to knit
meas = measures · **M1L** = lift strand between sts from front to back and knit this strand through the back loop · **M1R** = lift strand between sts from the back and knit this strand through the front loop · **patt** = pattern · **pm** = place marker · **p** = purl
pwise = as if to purl · **rem** = remain(ing) · **rep** = repeat(s) · **rev St st** = reverse stockinette stitch · **rnd(s)** = round(s) · **RS** = right side · **sc** = single crochet · **skp** = slip 1 stitch as if to knit, knit 1 stitch, pass slipped stitch over knitted stitch · **sk2p** = slip 1 stitch as if to knit, knit 2 together, pass slipped stitch over knitted stitch · **s2kp** = slip 2 stitches as if to knit, k 1 stitch, pass slipped stitches over knitted stitch · **sl** = slip · **st(s)** = stitch(es) · **St st** = stockinette stitch · **tbl** = through the back loop · **tog** = together · **wyib** = with yarn in back of work · **wyif** = with yarn in front of work · **WS** = wrong side · **yo(s)** = yarn over(s)