



[www.lanagrossa.com](http://www.lanagrossa.com)

# **PULLOVER • ABOUT BERLIN FUNKY**

Design 12 – Filati Lookbook 08

# PULLOVER • ABOUT BERLIN FUNKY

## Design 12 – Filati Lookbook 08



**Size** 36/38 (40/42, 44)

Instructions are given for first size. Figures in parenthesis refer to larger sizes. When only one figure is given, it applies to all sizes.

**Materials:** 350 (400, 450) g of Lana Grossa **About Berlin Funky** (83% cotton, 17% polyamide; 115 m/50 g) in Bonbon (col 8). Size 5 mm needles; size 4.5 mm crochet hook.

**Garter st:** K every row.

**Openwork patt:** Multiple of 4 + 2 selvage sts. Work according to chart. Numbers at right edge of chart indicate RS rows, numbers at left edge of chart indicate WS rows. Rep rows 1 – 4. **Note:** Work incomplete patt reps during shaping as foll: Sl st to right needle, dropping yo and pulling st up to elongate; sl st back to left needle and knit this st.

**Gauges:** On size 5 mm needles: 16 sts and 31 rows = 10 x 10 cm in garter st; 16 sts and 17 rows = 10 x 10 cm in openwork patt.

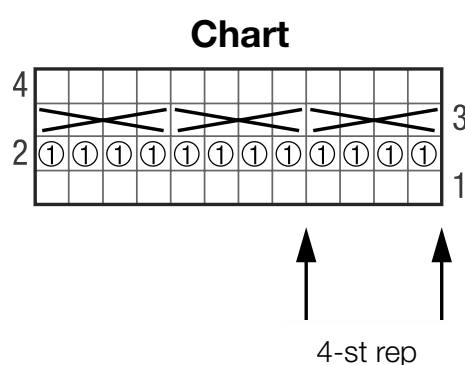
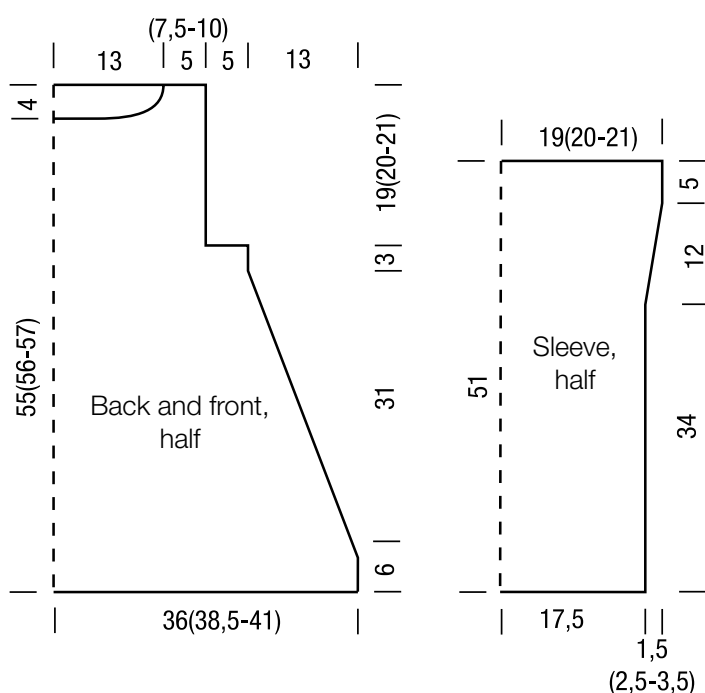
**Back:** With size 5 mm needles cast on 118 (126, 134) sts. Beg and end with a WS row, work in garter st for 19 rows. Work 20 rows in openwork patt. Work [12 rows in garter st, 20 rows in openwork patt] 2 times, work remainder of back in garter st. **At same time**, when piece meas 6 cm from cast-on, beg side shaping: Dec 1 st at each end of next RS row, then every alt RS row 11 times, then every foll RS row 9 times = 76

(84, 92) sts. Cont in patt until piece meas 40 cm from cast-on, ending with a WS row. Shape armholes: Bind off 8 sts at beg of next 2 rows = 60 (68, 76) sts. Work even in patt until piece meas 59 (60, 61) cm from cast-on. Bind off all sts.

**Front:** Work same as back until piece meas 55 (56, 57) cm from cast-on, ending with a WS row. Shape neck: Next row (RS): Bind off center 30 sts. Working each side separately, bind off 3 sts at each neck edge 1 time, 1 st 3 times and when piece meas 59 (60, 61) cm from cast-on, bind off rem 9 (13, 17) sts for each shoulder.

**Sleeves:** With size 5 mm needles cast on 58 sts. Beg and end with a WS row, work in garter st for 11 rows. Work 20 rows in openwork patt. Work [12 rows in garter st, 20 rows in openwork patt] 2 times, work remainder of sleeve in garter st. **At same time**, when piece meas 34 cm from cast-on, beg sleeve shaping: Inc 1 st at each end of next RS row, work even for 6 cm, rep RS inc row ([work even for 3 cm, rep RS inc row] 3 times / [work even for 2 cm, rep RS inc row] 5 times) = 62 (66, 70) sts. Work even until piece meas 51 cm from cast-on. Bind off all sts.

**Finishing:** Pin pieces to measurements and block. Sew shoulder seams. **Neck trim:** With size 4.5 mm crochet hook work 1 rnd sl st around neck edge. Set sleeves into armholes, sewing top 5 cm to bottom edges of armhole shaping. Sew side and sleeve seams.



### Chart key:

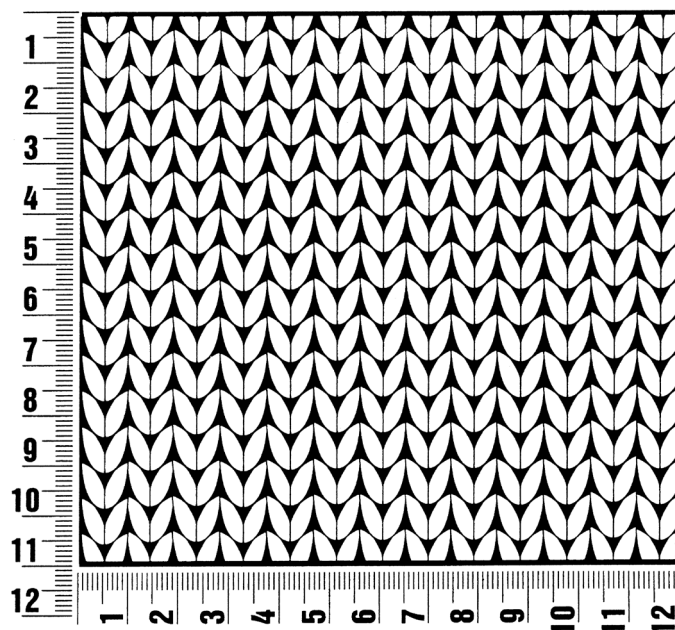
- = k1
- ⊙ = yo, k1
- ⊗ = sl 4 sts to right needle, dropping yos and pulling sts up to elongate; pass first 2 sts over last 2 sts; sl rem 2 sts back to left needle, k1f&b in each of these 2 sts



## Gauge Swatch

### Before you begin ...

...make a gauge swatch. Use the recommended needles, yarns and pattern stitch for your gauge swatch. It should measure approx. 12 cm x 12 cm. Cast-on and bind-off rows, as well as selvage stitches should not be included in the measurement. Pin your swatch and block it as you would the finished pieces of the garment. Count stitches and rows over 10 cm. If your gauge swatch is too small, switch to larger needles. If your gauge swatch is too big, switch to smaller needles.



## Abbreviations

**beg** = begin(ning) · **ch** = chain · **cont** = continue · **dec** = decreas(e)(ing) · **inc** = increas(e)(ing) · **k** = knit · **kwise** = as if to knit  
**meas** = measures · **M1L** = lift strand between sts from front to back and knit this strand through the back loop · **M1R** = lift strand between sts from the back and knit this strand through the front loop · **patt** = pattern · **pm** = place marker · **p** = purl  
**pwise** = as if to purl · **rem** = remain(ing) · **rep** = repeat(s) · **rev St st** = reverse stockinette stitch · **rnd(s)** = round(s) · **RS** = right side · **sc** = single crochet · **skp** = slip 1 stitch as if to knit, knit 1 stitch, pass slipped stitch over knitted stitch · **sk2p** = slip 1 stitch as if to knit, knit 2 together, pass slipped stitch over knitted stitch · **s2kp** = slip 2 stitches as if to knit, k 1 stitch, pass slipped stitches over knitted stitch · **sl** = slip · **st(s)** = stitch(es) · **St st** = stockinette stitch · **tbl** = through the back loop · **tog** = together · **wyib** = with yarn in back of work · **wyif** = with yarn in front of work · **WS** = wrong side · **yo(s)** = yarn over(s)

### Publisher's Info

**Publisher:** Lana Grossa GmbH, Gaimersheim, [www.lanagrossa.com](http://www.lanagrossa.com)

**Photographer:** Wilfried Wulff, [www.wilfriedwulff.com](http://www.wilfriedwulff.com)