



www.lanagrossa.com

PULLOVER • TROPICO

Design 13 – Filati Lookbook 08

PULLOVER • TROPICO

Design 13 – Filati Lookbook 08



Size 36/38 (40/42, 44)

Instructions are given for first size. Figures in parenthesis refer to larger sizes. When only one figure is given, it applies to all sizes.

Materials: 350 (400, 450) g of Lana Grossa **Tropico** (70% cotton, 30% Merino wool; 125 m/50 g) in Pistachio/Light Green/Terracotta/Cyclamen/Purple/Pink/Yellow **(col 1)**. Size 4.5 and 5 mm needles; size 4.5 mm circular needle, 40 cm long.

Rib patt: K1, p1.

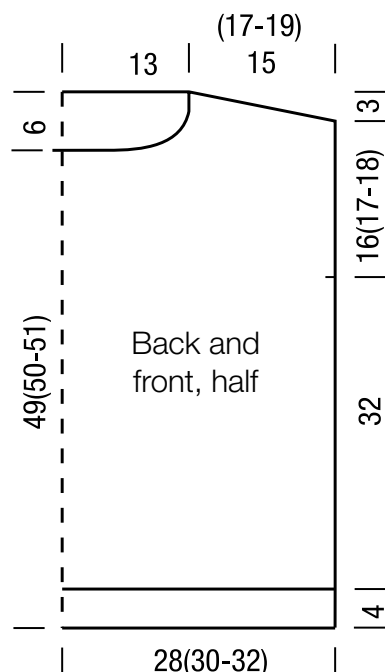
Lacy rib: Multiple of 4 + 1 + 2 selvage sts. Work according to chart. Number at right edge of chart indicates RS row, number at left edge of chart indicates WS row. Rep rows 1 and 2 for lacy rib.

Gauge: 19 sts and 21 rows = 10 x 10 cm in lacy rib on size 5 mm needles.

Back: With size 4.5 mm needles cast on 106 (114, 122) sts. Work in rib patt for 4 cm, increasing 1 st at center of last WS row = 107 (115, 123) sts. Change to size 5 mm needles. Next row (RS): Selvage st, work row 1 of lacy rib chart over next 105 (113, 121) sts: Work 4-st patt rep between arrows 25 (27, 29) times, work 5 sts to end of chart, selvage st. Cont in patt as established until piece meas 52 (53, 54) cm from cast-on, ending with a WS row. Shape shoulders/overarms: At each shoulder edge bind off 7 (8, 9) sts 1 time, 7 (8, 9) sts 2 times, 8 (9, 10) sts 1 time. Bind off rem 49 sts.

Front: Work same as back until piece meas 49 (50, 51) cm from cast-on, ending with a WS row. Shape neck: Next row (RS): Bind off center 17 sts. Working each side separately, bind off 4 sts at each neck edge 4 times. At same time, when piece meas 52 (53, 54) cm from cast-on, shape shoulders/overarms same as for back. No sts rem.

Finishing: Pin pieces to measurements and block. Sew shoulder/overarm seams. **Neck edging:** With size 4.5 mm circular needle pick up and k 108 sts evenly around neck edge. Place beg of rnd marker and join for working in rnds. Knit 4 rnds. Bind off all sts kwise. **Armhole bands:** Place markers 16 (17, 18) cm down from shoulders on front and back. With size 4.5 mm needles and RS facing pick up and k 84 (88, 92) sts between markers. Work in rib patt for 4 cm. Bind off all sts in rib. Sew side seams including armhole bands.



Chart

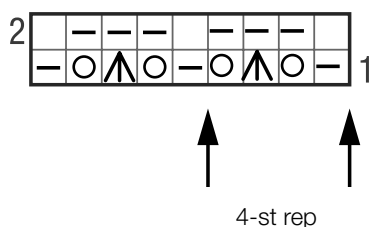


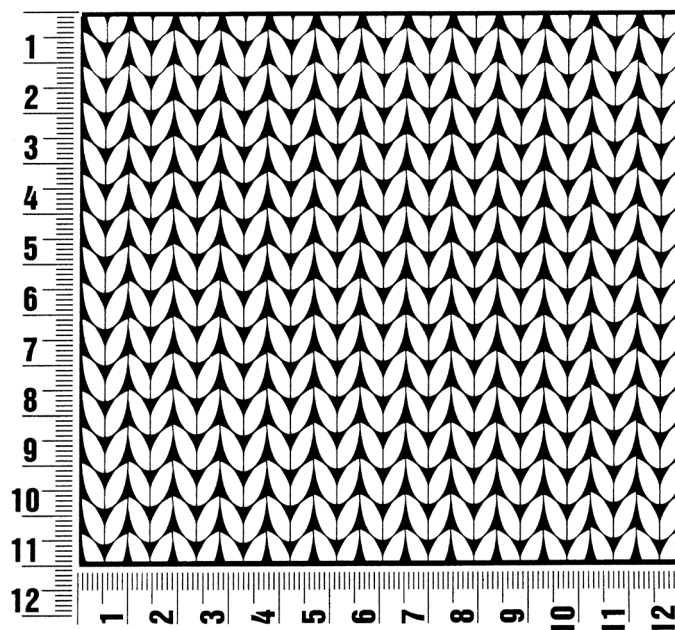
Chart key:

- = k1
- = p1
- = yo
- △ = s2kp: sl 2 kwise, k1, pass slipped sts over knitted st

Gauge Swatch

Before you begin ...

...make a gauge swatch. Use the recommended needles, yarns and pattern stitch for your gauge swatch. It should measure approx. 12 cm x 12 cm. Cast-on and bind-off rows, as well as selvage stitches should not be included in the measurement. Pin your swatch and block it as you would the finished pieces of the garment. Count stitches and rows over 10 cm. If your gauge swatch is too small, switch to larger needles. If your gauge swatch is too big, switch to smaller needles.



Abbreviations

beg = begin(ning) · **ch** = chain · **cont** = continue · **dec** = decreas(e)(ing) · **inc** = increas(e)(ing) · **k** = knit · **kwise** = as if to knit
meas = measures · **M1L** = lift strand between sts from front to back and knit this strand through the back loop · **M1R** = lift strand between sts from the back and knit this strand through the front loop · **patt** = pattern · **pm** = place marker · **p** = purl
pwise = as if to purl · **rem** = remain(ing) · **rep** = repeat(s) · **rev St st** = reverse stockinette stitch · **rnd(s)** = round(s) · **RS** = right side · **sc** = single crochet · **skp** = slip 1 stitch as if to knit, knit 1 stitch, pass slipped stitch over knitted stitch · **sk2p** = slip 1 stitch as if to knit, knit 2 together, pass slipped stitch over knitted stitch · **s2kp** = slip 2 stitches as if to knit, k 1 stitch, pass slipped stitches over knitted stitch · **sl** = slip · **st(s)** = stitch(es) · **St st** = stockinette stitch · **tbl** = through the back loop · **tog** = together · **wyib** = with yarn in back of work · **wyif** = with yarn in front of work · **WS** = wrong side · **yo(s)** = yarn over(s)

Publisher's Info

Publisher: Lana Grossa GmbH, Gaimersheim, www.lanagrossa.com

Photographer: Wilfried Wulff, www.wilfriedwulff.com