



www.lanagrossa.com

PULLOVER • TROPICO

Design 16 – Filati Lookbook 08

PULLOVER • TROPICO

Design 16 – Filati Lookbook 08



Size 36/38 (40/42, 44)

Instructions are given for first size. Figures in parenthesis refer to larger sizes. When only one figure is given, it applies to all sizes.

Materials: 400 (450, 500) g of Lana Grossa **Tropico** (70% cotton, 30% Merino wool; 125 m/50 g) in Pink/Mandarine/White/Salmon **(col 2)**. Size 4.5 and 5 mm needles; size 4.5 mm circular needle, 40 cm long; size 4 mm crochet hook.

2x3 rib: P2, k3.

2x2 rib: P2, k2.

St st: K on RS, p on WS.

Garter st: K every row.

Main patt: Rows 1 – 10: Work in garter st. Row 11: Selvage st, * yo, k1; rep from *, end selvage st. Row 12: Knit all sts, dropping all yos. Rep rows 1 – 12.

Selvage stitches: On every row: Knit first and last st.

Full-fashion decrease 1: At beg of RS row, k1 for selvage st, 2 sts in garter st, k2tog; at end of RS row, work to last 5 sts, skp, 2 sts in garter st, k1 for selvage st.

Full-fashion decrease 2: At beg of RS row, k1 for selvage st, 2 sts in St st, k2tog; at end of RS row, work to last 5 sts, skp, 2 sts in St st, k1 for selvage st.

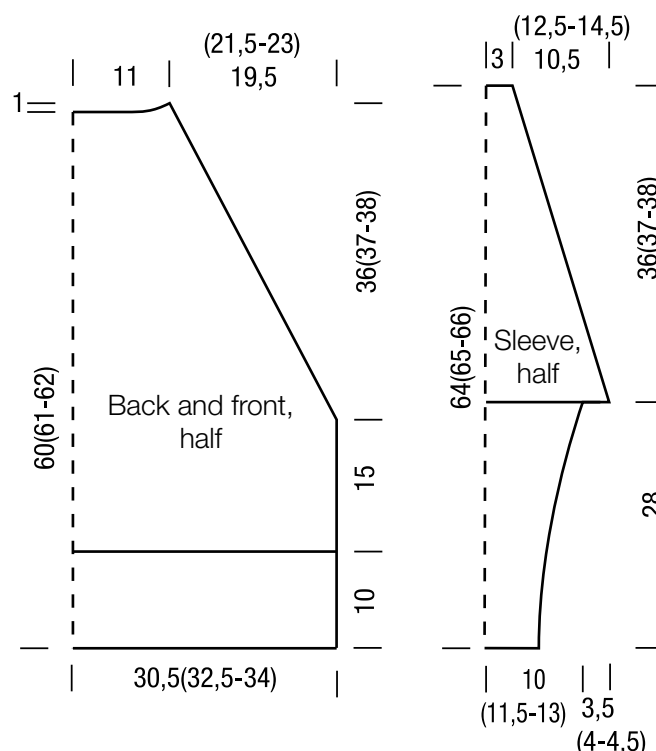
Gauge: 17 sts and 24 rows = 10 x 10 cm in main patt and St st on size 5 mm needles.

Back: With size 4.5 mm needles cast on 102 (107, 112) sts. Next row (WS): K1 for selvage st, * k2, p3; rep from *, end k1 for selvage st. Cont in 2x3 rib as established until piece meas 10 cm from cast-on, increasing 4 (5, 6) sts evenly across last WS row = 106 (112, 118) sts. Change to size 5 mm needles. Maintaining selvage sts, work in main patt until piece meas approx. 25 cm from cast-on and rows 1 – 12 of main patt have been worked 3 times. Shape raglan: Cont in main patt and working full-fashion dec 1, dec 1 st at each end of next RS row, then every alt 2nd and 4th row 33 (31, 27) times, then every foll RS row 0 (5, 12) times = 38 sts. **At same time,** after rows 1 – 12 of main patt have been worked a total of 10 times, work remainder of back in garter st until piece meas 60 (61, 62) cm from cast-on, ending with a WS row. Shape neck: Next row (RS): Bind off center 32 sts. Working each side separately, bind off 3 sts at each neck edge 1 time. No sts rem.

Front: Work same as back.

Sleeves: With size 4.5 mm needles cast on 37 (42, 47) sts. Next row (WS): K1 for selvage st, * k2, p3; rep from *, end k1 for selvage st. Cont in 2x3 rib as established until piece meas 28 cm from cast-on, increasing 12 (13, 14) sts evenly across last WS row = 49 (55, 61) sts. Change to size 5 mm needles. Work in St st and shape sleeve cap as foll: Working full-fashion dec 2, dec 1 st at each end of next RS row, then every alt 4th and 6th row 17 (10, 0) times, then every 4th row 0 (10, 23) times = 13 sts and when piece meas 64 (65, 66) cm from cast-on, bind off all sts.

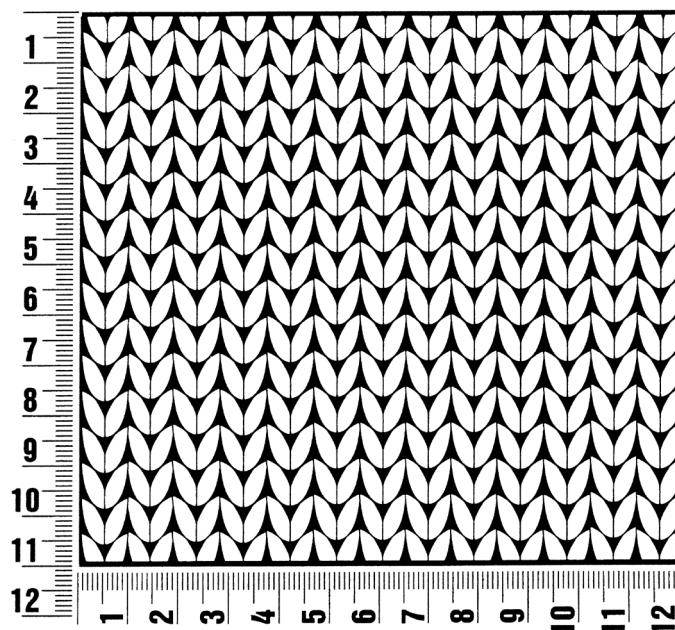
Finishing: Pin pieces to measurements and block. Sew raglan, side and sleeve seams. **Neckband:** With size 4 mm crochet hook work 1 rnd of 92 sc around neck edge. With size 4.5 mm circular needle, pick up and k 1 st for each sc = 92 sts. Place beg of rnd marker and join for working in rnds. Work 2x2 rib in rnds for 3 rnds. Bind off all sts in rib.



Gauge Swatch

Before you begin ...

...make a gauge swatch. Use the recommended needles, yarns and pattern stitch for your gauge swatch. It should measure approx. 12 cm x 12 cm. Cast-on and bind-off rows, as well as selvage stitches should not be included in the measurement. Pin your swatch and block it as you would the finished pieces of the garment. Count stitches and rows over 10 cm. If your gauge swatch is too small, switch to larger needles. If your gauge swatch is too big, switch to smaller needles.



Abbreviations

beg = begin(ning) · **ch** = chain · **cont** = continue · **dec** = decreas(e)(ing) · **inc** = increas(e)(ing) · **k** = knit · **kwise** = as if to knit
meas = measures · **M1L** = lift strand between sts from front to back and knit this strand through the back loop · **M1R** = lift strand between sts from the back and knit this strand through the front loop · **patt** = pattern · **pm** = place marker · **p** = purl
pwise = as if to purl · **rem** = remain(ing) · **rep** = repeat(s) · **rev St st** = reverse stockinette stitch · **rnd(s)** = round(s) · **RS** = right side · **sc** = single crochet · **skp** = slip 1 stitch as if to knit, knit 1 stitch, pass slipped stitch over knitted stitch · **sk2p** = slip 1 stitch as if to knit, knit 2 together, pass slipped stitch over knitted stitch · **s2kp** = slip 2 stitches as if to knit, k 1 stitch, pass slipped stitches over knitted stitch · **sl** = slip · **st(s)** = stitch(es) · **St st** = stockinette stitch · **tbl** = through the back loop · **tog** = together · **wyib** = with yarn in back of work · **wyif** = with yarn in front of work · **WS** = wrong side · **yo(s)** = yarn over(s)

Publisher's Info

Publisher: Lana Grossa GmbH, Gaimersheim, www.lanagrossa.com

Photographer: Wilfried Wulff, www.wilfriedwulff.com