



www.lanagrossa.com

TOP · CERTO

Design 03 – Linea Pura 13

Size 36/38 (40/42)

Instructions are given for smaller size. Figure in parenthesis refers to larger size. When only one figure is given, it applies to both sizes.

Materials: 300 (350) g of Lana Grossa **Certo** (100% GOTS cotton; 115 m/50 g) in Concrete (**col 12**). Size 7 and 8 mm needles.

Two-stitch selvage: On RS row, k1, sl 1 pwise wyib, patt to last 2 sts, sl 1 pwise wyib, k1. On WS row, sl 1 pwise wyif, p1, patt to last 2 sts, p1, sl 1 pwise wyif.

Rib patt: K1, p1.

St st: K on RS, p on WS.

Rev St st: P on RS, k on WS.

Grain stitch: Work according to chart. Numbers at right edge of chart indicate RS rows, numbers at left edge of chart indicate WS rows. Work to patt rep, work 4 sts between arrows for patt rep, work to end of chart. Rep rows 1 – 4.

Full-fashion increase: On RS row: M1R, 3 sts in from each edge.

Full-fashion decrease: At beg of RS row, patt over first 3 sts, skp; at end of RS row, work to last 5 sts, k2tog, patt over last 3 sts.

Gauges: 16 sts and 20 rows = 10 x 10 cm in grain st on size 8 mm needles; 16 sts and 23.5 rows = 10 x 10 cm in St st on size 7 mm needles.

Back: With size 7 mm needles cast on 70 (78) sts. Next row (WS): Two-stitch selvage, 1 st in rev St st, 64 (72) sts in rib patt, 1 st in rev St st, two-stitch selvage. Next row (RS): Two-stitch selvage, 1 st in rev St st, 64 (72) sts in St st, 1 st in rev St st, two-stitch selvage. Cont in patt as set by last row until a total of 19 rows has been worked from cast-on and piece meas 8 cm. Change to size 8 mm needles. Work in grain st according to chart and shape sides as foll: Working full-fashion dec, dec 1 st at each end of 7th row, then every 4th row 3 times = 62 (70) sts. Work even for 11 rows. Working full-fashion inc, inc 1 st at each end of next RS row, then every 4th row 3 times = 70 (78) sts. Work increased sts into patt. Work even for 3 rows. Shape armholes: Working full-fashion dec, dec 1 st at each end of next 4 RS rows = 62 (70) sts. Work 1 WS row. Working full-fashion inc, inc 1 st at each end of next 9 RS rows = 80 (88) sts. Work increased sts into patt. Work even for 1 (5) row(s). Shape shoulders: Working full-fashion dec, dec 1 st at each end of next RS row, then every alt RS row 4 (6) times, then every foll RS row 5 (3) times = 60 (68) sts. Work 1 WS row. Change to size 7 mm needles. Next RS (inc) row: Work in St st, inc 1 st at each end of row = 62 (70) sts. Cont in St st, rep RS inc row 4 more times = 70 (78) sts. Work 1 WS row. Bind off all sts.

Front: Work same as back.

Finishing: Pin pieces to measurements and block. Sew shoulder and collar seams. Sew side seams. **Note:** Sew all seams 1 st in from edge.

Chart

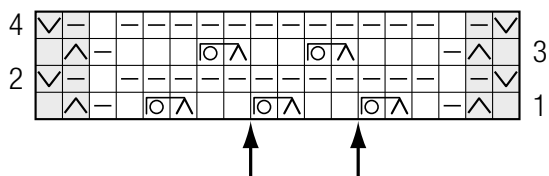
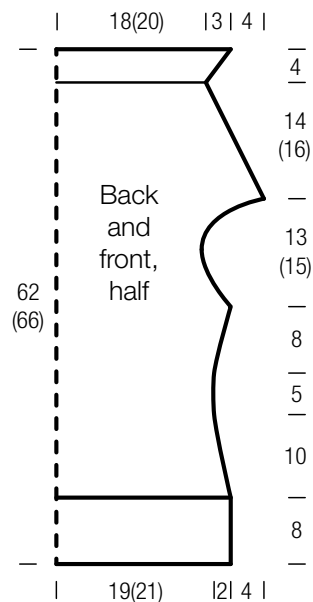


Chart key:

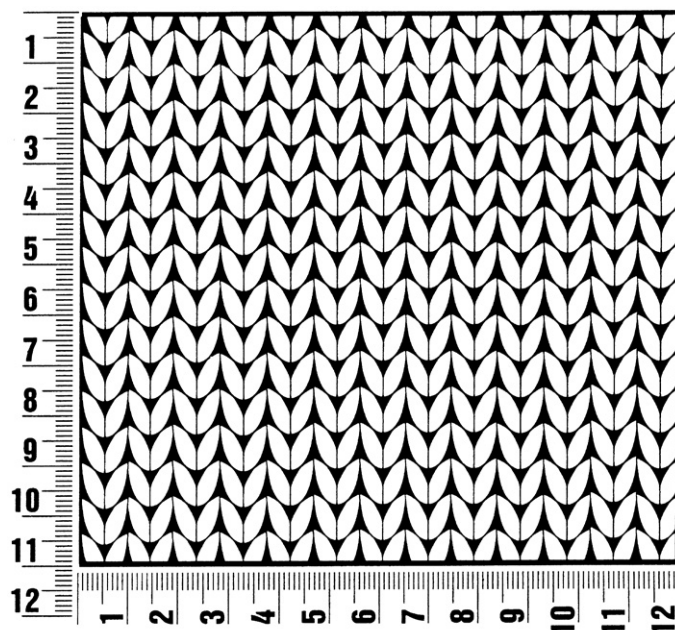
- = k1
- = p1
- = sl 1 pwise wyib
- = sl 1 pwise wyif
- = sl 1 pwise wyib, k1, yo, pass slipped st over knitted st and yo



Gauge Swatch

Before you begin ...

...make a gauge swatch. Use the recommended needles, yarns and pattern stitch for your gauge swatch. It should measure approx. 12 cm x 12 cm. Cast-on and bind-off rows, as well as selvage stitches should not be included in the measurement. Pin your swatch and block it as you would the finished pieces of the garment. Count stitches and rows over 10 cm. If your gauge swatch is too small, switch to larger needles. If your gauge swatch is too big, switch to smaller needles.



Abbreviations

beg = begin(ning) · **ch** = chain · **cont** = continue · **dec** = decreas(e)(ing) · **inc** = increas(e)(ing) · **k** = knit · **kwise** = as if to knit
meas = measures · **M1L** = lift strand between sts from front to back and knit this strand through the back loop · **M1R** = lift strand between sts from the back and knit this strand through the front loop · **patt** = pattern · **pm** = place marker · **p** = purl
pwise = as if to purl · **rem** = remain(ing) · **rep** = repeat(s) · **rev St st** = reverse stockinette stitch · **rnd(s)** = round(s) · **RS** = right side · **sc** = single crochet · **skp** = slip 1 stitch as if to knit, knit 1 stitch, pass slipped stitch over knitted stitch · **sk2p** = slip 1 stitch as if to knit, knit 2 together, pass slipped stitch over knitted stitch · **s2kp** = slip 2 stitches as if to knit, k 1 stitch, pass slipped stitches over knitted stitch · **sl** = slip · **st(s)** = stitch(es) · **St st** = stockinette stitch · **tbl** = through the back loop · **tog** = together · **wyib** = with yarn in back of work · **wyif** = with yarn in front of work · **WS** = wrong side · **yo(s)** = yarn over(s)

Publisher's Info

Publisher: Lana Grossa GmbH, Gaimersheim, www.lanagrossa.com

Photographer: Petra Obermueller