



[www.lanagrossa.com](http://www.lanagrossa.com)

**PULLOVER · CERTO**  
Design 09 – Linea Pura 13



# PULLOVER • CERTO

## Design 09 – Linea Pura 13



**Size** 36 – 40 (42 – 46)

Instructions are given for smaller size. Figure in parenthesis refers to larger size. When only one figure is given, it applies to both sizes.

**Materials:** 550 (650) g of Lana Grossa **Certo** (100% GOTS cotton; 115 m/50 g) in Grey Blue/Dark Grey/Red Brown/Natural (**col 104**). Size 5 mm needles; size 4 mm crochet hook.

**Selvage stitches:** On every row: Sl first st kwise, k last st.

**Mesh stitch:** Work according to chart. Numbers at right edge of chart indicate RS rows, numbers at left edge of chart indicate WS rows. Work to patt rep, work 3 sts between arrows for patt rep, work to end of chart.

**Full-fashion increase:** On RS row: M1R, 1 st in from each edge.

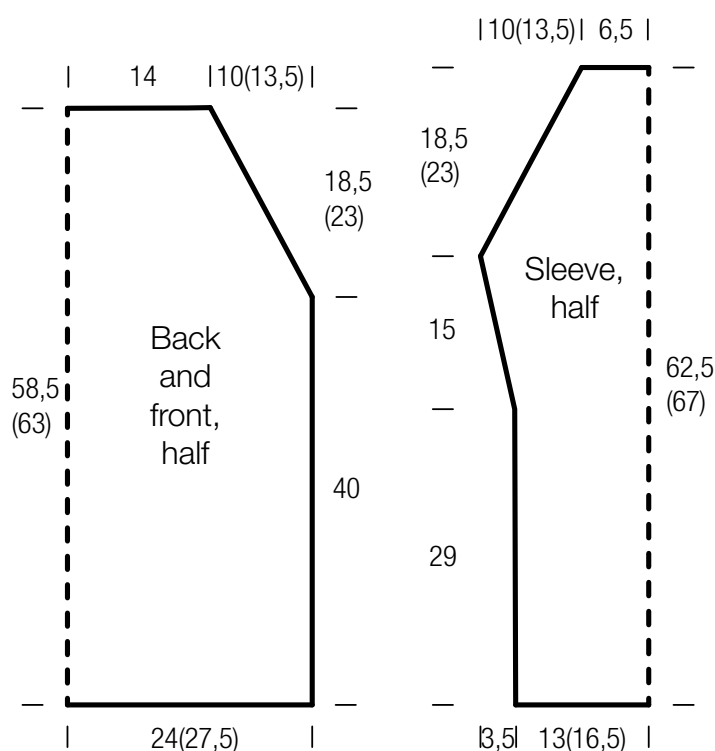
**Gauge:** 17.5 sts and 27 rows = 10 x 10 cm in mesh st on size 5 mm needles.

**Back:** With size 5 mm needles cast on 86 (98) sts. Knit 1 WS row. Work mesh st according to chart for 136 rows: Work rows 1 – 6 once, then rep rows 5 and 6 until a total of 104 rows has been worked and piece meas 40 cm from cast-on. Work rows 105 – 136, working raglan decs as shown on chart, then cont in patt and work decs as established on foll 2 RS rows, then every alt RS row 1 time, then every foll RS row 5 (11) times = 50 sts. Work 1 WS row. Bind off all sts.

**Front:** Work same as back.

**Sleeves:** With size 5 mm needles cast on 47 (59) sts. Knit 1 WS row. Work mesh st according to chart, work rows 1 – 6 once then rep rows 5 and 6 until a total of 78 rows has been worked and piece meas 29 cm from cast-on. Rep rows 5 and 6 and shape sleeve as foll: Next RS (inc) row: Working full-fashion inc, inc 1 st at each end of row = 49 (61) sts. Rep inc row every 8th row 2 times, then every 6th row 3 times = 59 (71) sts. Work increased sts into patt. Rep rows 5 and 6 until 40 rows = 15 cm have been worked from first inc row. Shape sleeve cap: Work decs for sleeve cap shaping same as for back raglan shaping = 23 sts. Work 1 WS row. Bind off all sts.

**Finishing:** Pin pieces to measurements and block. Sew raglan, side and sleeve seams. **Neck edging:** With size 4 mm crochet hook, work 1 rnd sc, then 1 rnd rev sc [work sc from left to right] around neck edge. Fasten off.

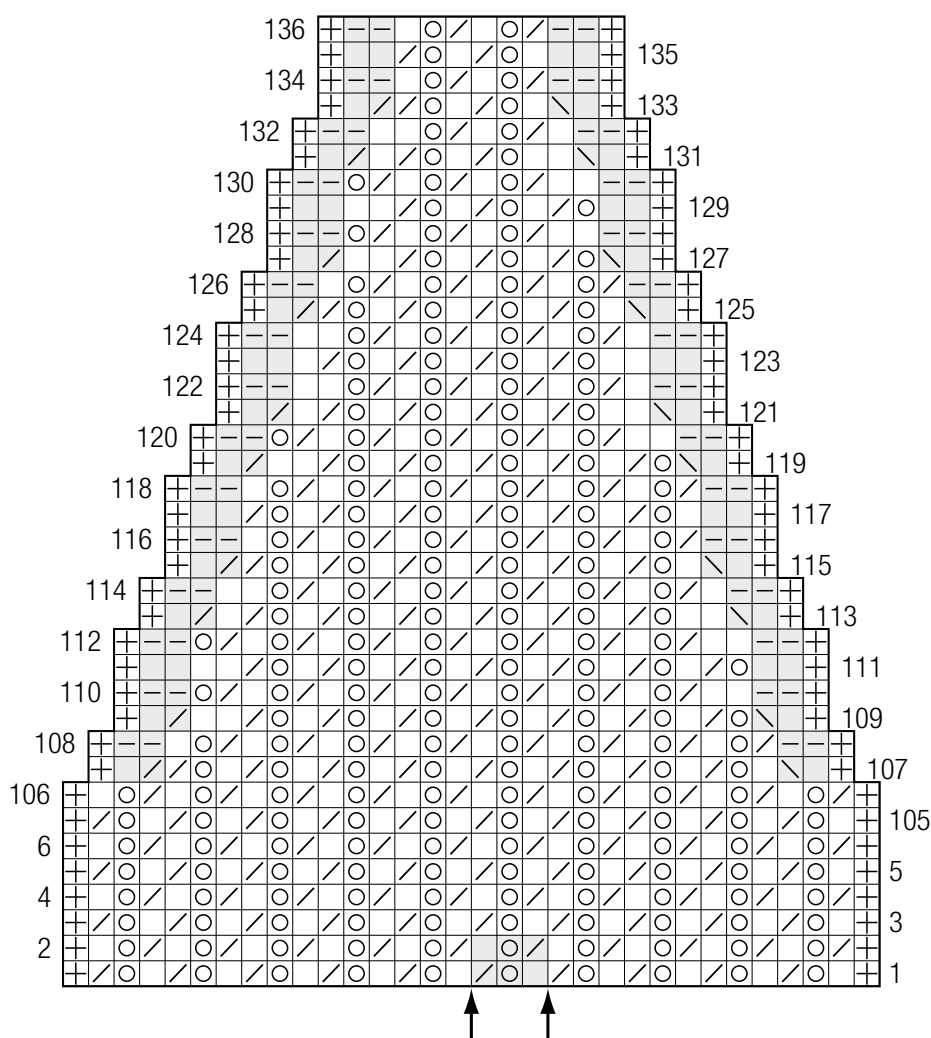


# PULLOVER · CERTO

## Design 09 – Linea Pura 13



### Chart



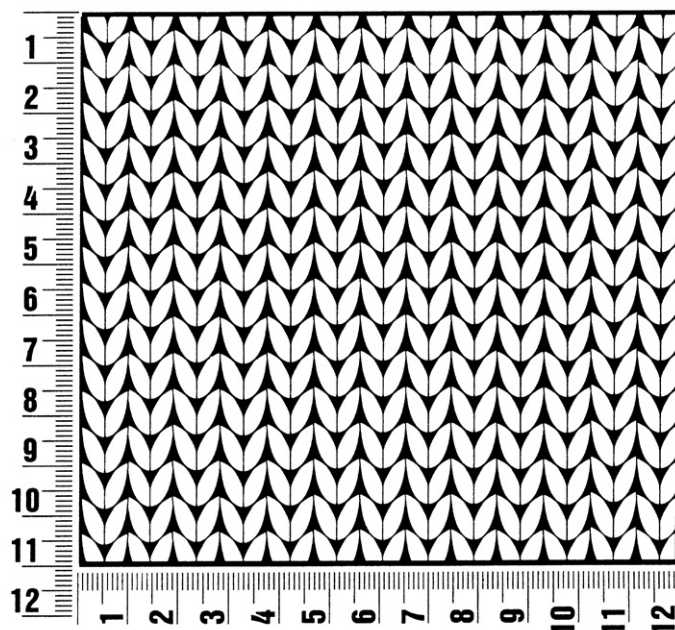
### Chart key:

- ⊕ = selvage st
- = k1
- ▢ = p1
- = yo
- ▤ = k2tog
- ▥ = skp: sl 1 kwise, k1, pass slipped st over knitted st

## Gauge Swatch

### Before you begin ...

...make a gauge swatch. Use the recommended needles, yarns and pattern stitch for your gauge swatch. It should measure approx. 12 cm x 12 cm. Cast-on and bind-off rows, as well as selvage stitches should not be included in the measurement. Pin your swatch and block it as you would the finished pieces of the garment. Count stitches and rows over 10 cm. If your gauge swatch is too small, switch to larger needles. If your gauge swatch is too big, switch to smaller needles.



## Abbreviations

**beg** = begin(ning) · **ch** = chain · **cont** = continue · **dec** = decreas(e)(ing) · **inc** = increas(e)(ing) · **k** = knit · **kwise** = as if to knit  
**meas** = measures · **M1L** = lift strand between sts from front to back and knit this strand through the back loop · **M1R** = lift strand between sts from the back and knit this strand through the front loop · **patt** = pattern · **pm** = place marker · **p** = purl  
**pwise** = as if to purl · **rem** = remain(ing) · **rep** = repeat(s) · **rev St st** = reverse stockinette stitch · **rnd(s)** = round(s) · **RS** = right side · **sc** = single crochet · **skp** = slip 1 stitch as if to knit, knit 1 stitch, pass slipped stitch over knitted stitch · **sk2p** = slip 1 stitch as if to knit, knit 2 together, pass slipped stitch over knitted stitch · **s2kp** = slip 2 stitches as if to knit, k 1 stitch, pass slipped stitches over knitted stitch · **sl** = slip · **st(s)** = stitch(es) · **St st** = stockinette stitch · **tbl** = through the back loop · **tog** = together · **wyib** = with yarn in back of work · **wyif** = with yarn in front of work · **WS** = wrong side · **yo(s)** = yarn over(s)

### Publisher's Info

**Publisher:** Lana Grossa GmbH, Gaimersheim, www.lanagrossa.com

**Photographer:** Petra Obermueller