



www.lanagrossa.com

PULLOVER · CERTO

Design 12 – Linea Pura 13

PULLOVER • CERTO

Design 12 – Linea Pura 13



Size 36/38 (40/42)

Instructions are given for smaller size. Figure in parenthesis refers to larger size. When only one figure is given, it applies to both sizes.

Materials: 500 (550) g of Lana Grossa **Certo** (100% GOTS cotton; 115 m/50 g) in Beige (**col 10**). Size 4.5 and 5.5 mm needles; size 4.5 mm circular needle, 50 cm long.

Selvage stitches: On every row: Sl first st kwise, k last st.

Rib patt: K2, p2.

St st: K on RS, p on WS.

Drop stitch insert A: Work according to chart A. Numbers at right edge of chart indicate RS rows, numbers at left edge of chart indicate WS rows. Work rows 1 – 42 once.

Drop stitch insert B: Work according to chart B. Numbers at right edge of chart indicate RS rows, numbers at left edge of chart indicate WS rows. Work rows 1 – 42 (44) once.

Full-fashion increase: On RS row: M1R, 2 sts in from each edge.

Gauge: 18 sts and 26 rows = 10 x 10 cm in St st on size 5.5 mm needles.

Back: With size 4.5 mm needles cast on 86 (94) sts. Next row (WS): Selvage st, p1, * k2, p2; rep from * to last 4 sts, k2, p1, selvage st. Cont in rib patt as established for 16 more rows and piece meas 6 cm from cast-on. Change to size 5.5 mm needles. Maintaining selvage sts, work in St st for 60 rows = 23 cm. Place marker in first and last st on last WS row to indicate beg of armholes. Work even for 56 (58) rows and piece meas 21 (22) cm from armhole markers. Bind off all sts. Mark center 40 sts for neck.

Front: Work same as back for first 16 rows. Next row (WS and last rib patt row): Patt over 22 (26) sts, bind off 10 sts, patt to end. Change to size 5.5 mm needles. Next row (RS): Selvage st, work in St st to 2 sts before bound-off sts, work row 1 of drop st insert chart A over next 14 sts (= over 2 sts before bound-off sts, over 10 bound-off sts and over 2 sts after bound-off sts), work in St st to last st, selvage st. Next row (WS): Selvage st, work next 19 (23) sts in St st, work row 2 of chart A over next 14 sts, work in St st to last st, selvage

st. Cont in patt as established through row 40 of drop st insert chart A. Next row (RS): Selvage st, work next 34 (39) sts in St st, work row 1 of drop st insert chart B over next 16 sts, work 1 (0) st in St st, work row 41 of chart A over next 14 sts, work in St st to last st, selvage st. Next row (WS): Selvage st, work next 19 (23) sts in St st, work row 42 of chart A over next 14 sts, work 1 (0) st in St st, work row 2 of chart B over next 16 sts, work in St st to last st, selvage st. Next row (RS): Selvage st, work next 34 (39) sts in St st, work row 3 of chart B over next 16 sts, work in St st to last st, selvage st. Cont in patt as set by last row to end of chart B. At same time, when same length as back to armholes, place armhole markers same as for back. Shape neck: Next row (RS): Drop center 5 yos. Working each side separately, bind off 5 sts at each neck edge 1 time, 3 sts 1 time, 2 sts 1 time, 1 st 2 times, then 1 st every 4th row 3 times. Bind off rem 23 (27) sts for each shoulder.

Left sleeve: With size 4.5 mm needles cast on 42 (46) sts. Next row (WS): Selvage st, p1, * k2, p2; rep from * to last 4 sts, k2, p1, selvage st. Cont in rib patt as established for 16 more rows and piece meas 6 cm from cast-on. Change to size 5.5 mm needles. Maintaining selvage sts, work in St st and shape sleeve as foll: Inc 1 st at each end of 5th row, then [every 6th row 2 times, then every 4th row 1 time] 5 times, then every 6th row 2 times = 78 (82) sts. Work even until a total of 106 rows = 41 cm has been worked in St st. Bind off all sts.

Right sleeve: Work same as left sleeve for first 16 rows. Next row (WS and last rib patt row): Patt over 22 (24) sts, bind off 10 sts, patt to end. Change to size 5.5 mm needles. Next row (RS): Selvage st, work in St st to 2 sts before bound-off sts, work row 1 of drop st insert chart A over next 14 sts (= over 2 sts before bound-off sts, over 10 bound-off sts and over 2 sts after bound-off sts), work in St st to last st, selvage st. Cont in patt as established to end of chart A, then work in St st across all sts. At same time, work incs for sleeve shaping same as for left sleeve and when right sleeve meas same length as left sleeve, bind off all sts.

Finishing: Pin pieces to measurements and block. Sew shoulder seams. Neckband: With size 4.5 mm circular needle, pick up and k 90 sts evenly around neck edge, cast on 10 sts over bound-off sts = 100 sts. Place beg of rnd marker and join for working in rnds. Work rib patt in rnds for 3 cm. Bind off all sts in rib. Sew on sleeves between markers. Sew side and sleeve seams.

PULLOVER · CERTO

Design 12 – Linea Pura 13



Charts A and B

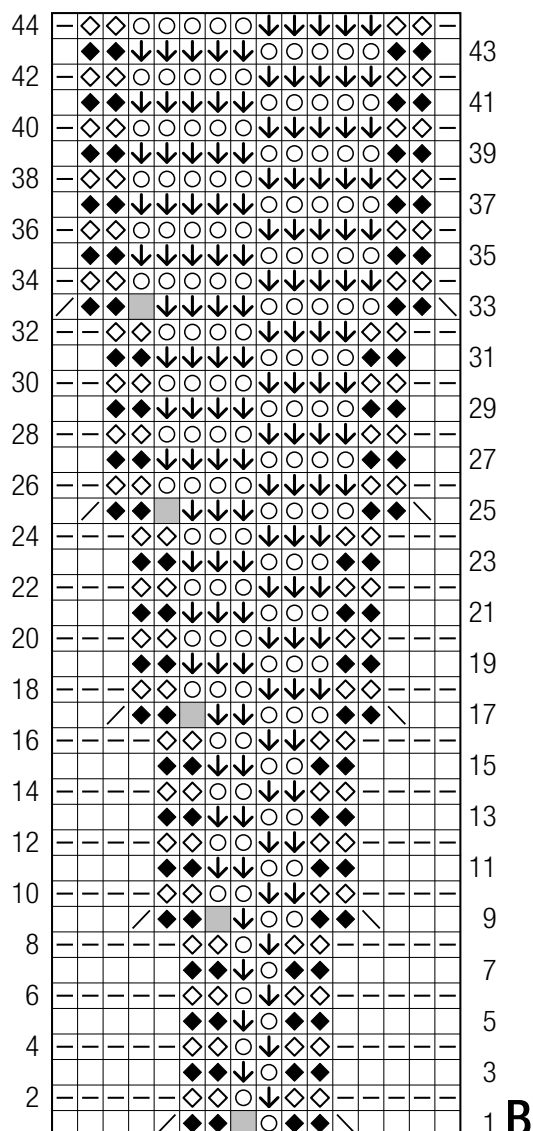
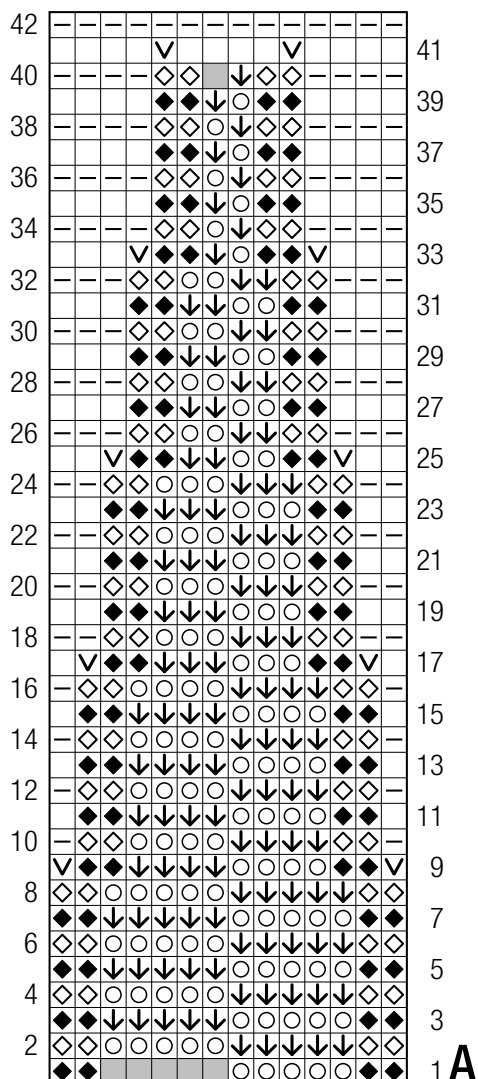
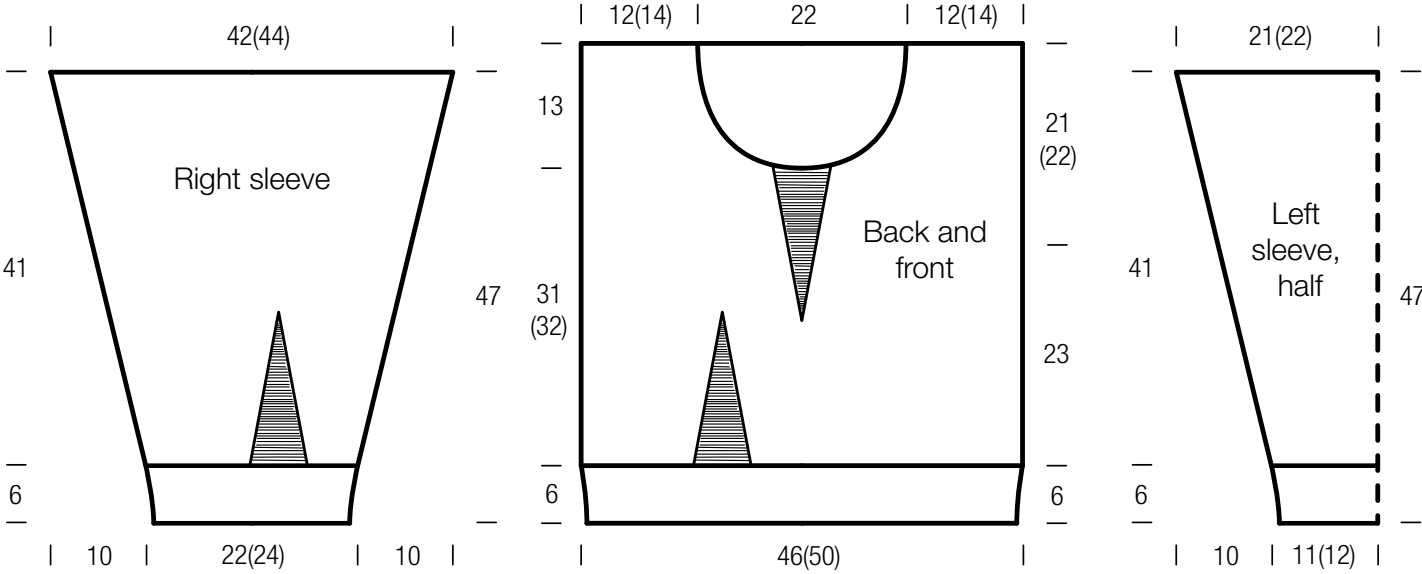


Chart key:

- = k1
- ▬ = p1
- = yo
- ◆ = k1tbl
- ◊ = p1tbl
- ↓ = drop yo from row below
- = represents “no stitch” (included to keep st count correct)
- ∇ = M1R
- ↘ = k2tog
- ↘○ = skp: sl 1 kwise, k1, pass slipped st over knitted st

PULLOVER • CERTO

Design 12 – Linea Pura 13



Gauge Swatch

Before you begin ...

...make a gauge swatch. Use the recommended needles, yarns and pattern stitch for your gauge swatch. It should measure approx. 12 cm x 12 cm. Cast-on and bind-off rows, as well as selvage stitches should not be included in the measurement. Pin your swatch and block it as you would the finished pieces of the garment. Count stitches and rows over 10 cm. If your gauge swatch is too small, switch to larger needles. If your gauge swatch is too big, switch to smaller needles.



Abbreviations

beg = begin(ning) · **ch** = chain · **cont** = continue · **dec** = decreas(e)(ing) · **inc** = increas(e)(ing) · **k** = knit · **kwise** = as if to knit
meas = measures · **M1L** = lift strand between sts from front to back and knit this strand through the back loop · **M1R** = lift strand between sts from the back and knit this strand through the front loop · **patt** = pattern · **pm** = place marker · **p** = purl
pwise = as if to purl · **rem** = remain(ing) · **rep** = repeat(s) · **rev St st** = reverse stockinette stitch · **rnd(s)** = round(s) · **RS** = right side · **sc** = single crochet · **skp** = slip 1 stitch as if to knit, knit 1 stitch, pass slipped stitch over knitted stitch · **sk2p** = slip 1 stitch as if to knit, knit 2 together, pass slipped stitch over knitted stitch · **s2kp** = slip 2 stitches as if to knit, k 1 stitch, pass slipped stitches over knitted stitch · **sl** = slip · **st(s)** = stitch(es) · **St st** = stockinette stitch · **tbl** = through the back loop · **tog** = together · **wyib** = with yarn in back of work · **wyif** = with yarn in front of work · **WS** = wrong side · **yo(s)** = yarn over(s)

Publisher's Info

Publisher: Lana Grossa GmbH, Gaimersheim, www.lanagrossa.com

Photographer: Petra Obermueller