



www.lanagrossa.com

PULLOVER · CERTO
Design 15 – Linea Pura 13

PULLOVER • CERTO

Design 15 – Linea Pura 13



Size 36/38 (40/42, 44/46)

Instructions are given for first size. Figures in parenthesis refer to larger sizes. When only one figure is given, it applies to all sizes.

Materials: 500 (550, 600) g of Lana Grossa **Certo** (100% GOTS cotton; 115 m/50 g) in Grey Green/Jade/Grey Blue/Natural (**col 106**). Size 6 mm needles; size 6 mm circular needle, 50 cm long; cable needle [cn].

Selvage stitches: On every row: Sl first st kwise, k last st.

St st: K on RS, p on WS.

Full-fashion decrease: At beg of RS row, selvage st, 2 sts in St st, skp; at end of RS row, work to last 5 sts, k2tog, 2 sts in St st, selvage st.

Full-fashion increase: On RS row: M1R, 3 sts in from each edge.

Gauge: 18.5 sts and 28 rows = 10 x 10 cm in St st on size 6 mm needles.

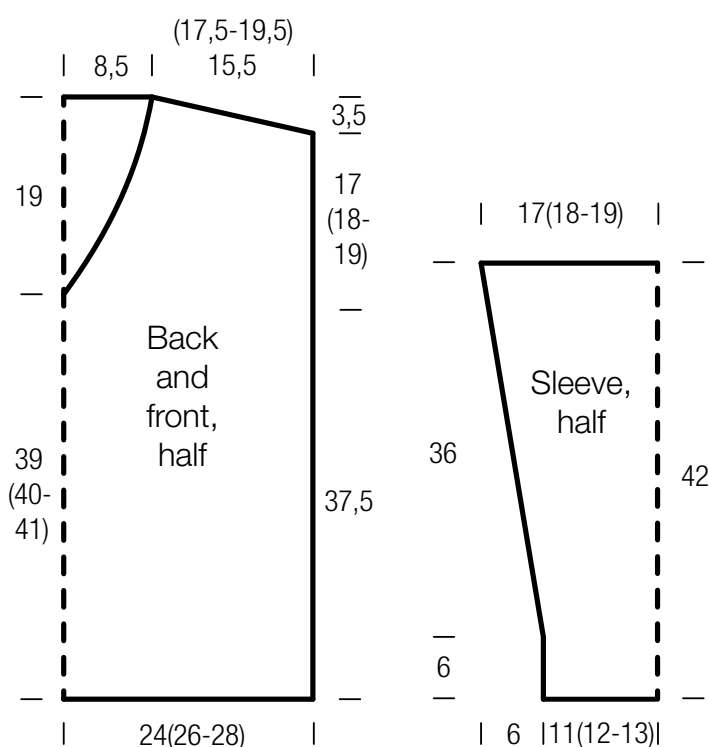
Back: With size 6 mm needles cast on 92 (98, 106) sts. Knit 1 WS row. Working a selvage st at each edge, work in St st for 104 rows and piece meas 37.5 cm from cast-on. Place marker in first and last st on last WS row to indicate beg of armholes. Work even for 48 (52, 54) rows and piece meas 17 (18, 19) cm from armhole markers. Shape shoulders: Bind off 6 (6, 7) sts at beg of next 2 rows, then 6 sts at beg of next 8 rows

(then 6 sts at beg of next 2 rows, 7 sts at beg of next 6 rows / then 7 sts at beg of next 4 rows, 8 sts at beg of next 4 rows). Bind off rem 32 sts.

Front: Work same as back until 6 (8, 10) rows have been worked from armhole markers and armhole meas 1.5 (2.5, 3.5) cm. Shape V-neck: Next row (RS): Work to 2 sts before center, sl 2 sts to cn and hold in back of work, k2, sl sts from cn to left needle and turn, leaving rem sts on hold. **Left front:** Next row (WS): Selvage st, work in St st to last st, selvage st. Cont in St st and working full-fashion dec, dec 1 st at neck edge [every foll RS row 1 time, then every alt RS row 1 time] 8 times and when same length as back to shoulder, shape shoulder at right edge as foll: At beg of RS rows bind off 6 (6, 7) sts 1 time, then 6 sts 4 times (then 6 sts 1 time, 7 sts 3 times / then 7 sts 2 times, 8 sts 2 times). No sts rem. **Right front:** Return held sts to needle and with RS facing rejoin yarn. Complete as given for left front, reversing all shaping.

Sleeves: With size 6 mm needles cast on 42 (46, 50) sts. Knit 1 WS row. Working a selvage st at each edge, work in St st and shape sleeve as foll: Inc 1 st at each end of 17th row, then every 8th row 10 times = 64 (68, 72) sts. Work even until a total of 102 rows = 36 cm has been worked from first inc row. Bind off all sts.

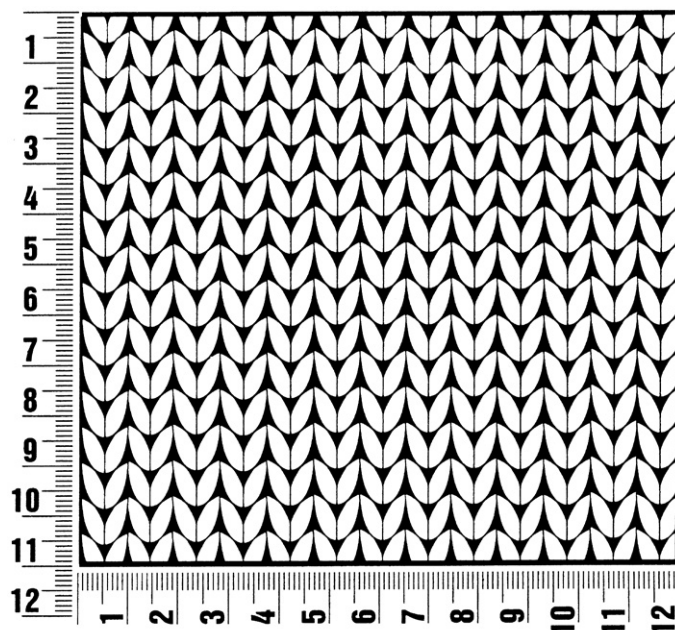
Finishing: Pin pieces to measurements and block. Sew shoulder seams. **Neck trim:** With size 6 mm circular needle, pick up and k 88 sts evenly around neck edge. Bind off all sts pwise. Sew on sleeves between markers. Sew side and sleeve seams.



Gauge Swatch

Before you begin ...

...make a gauge swatch. Use the recommended needles, yarns and pattern stitch for your gauge swatch. It should measure approx. 12 cm x 12 cm. Cast-on and bind-off rows, as well as selvage stitches should not be included in the measurement. Pin your swatch and block it as you would the finished pieces of the garment. Count stitches and rows over 10 cm. If your gauge swatch is too small, switch to larger needles. If your gauge swatch is too big, switch to smaller needles.



Abbreviations

beg = begin(ning) · **ch** = chain · **cont** = continue · **dec** = decreas(e)(ing) · **inc** = increas(e)(ing) · **k** = knit · **kwise** = as if to knit
meas = measures · **M1L** = lift strand between sts from front to back and knit this strand through the back loop · **M1R** = lift strand between sts from the back and knit this strand through the front loop · **patt** = pattern · **pm** = place marker · **p** = purl
pwise = as if to purl · **rem** = remain(ing) · **rep** = repeat(s) · **rev St st** = reverse stockinette stitch · **rnd(s)** = round(s) · **RS** = right side · **sc** = single crochet · **skp** = slip 1 stitch as if to knit, knit 1 stitch, pass slipped stitch over knitted stitch · **sk2p** = slip 1 stitch as if to knit, knit 2 together, pass slipped stitch over knitted stitch · **s2kp** = slip 2 stitches as if to knit, k 1 stitch, pass slipped stitches over knitted stitch · **sl** = slip · **st(s)** = stitch(es) · **St st** = stockinette stitch · **tbl** = through the back loop · **tog** = together · **wyib** = with yarn in back of work · **wyif** = with yarn in front of work · **WS** = wrong side · **yo(s)** = yarn over(s)

Publisher's Info

Publisher: Lana Grossa GmbH, Gaimersheim, www.lanagrossa.com

Photographer: Petra Obermueller