



www.lanagrossa.com

TOP · CAPRI & STROMBOLI
Design 01 – Filati Journal 59

TOP · CAPRI & STROMBOLI

Design 01 – Filati Journal 59



Size 36/38 (40/42)

Instructions are given for smaller size. Figure in parenthesis refers to larger size. When only one figure is given, it applies to both sizes.

Materials: **150 (200) g** of Lana Grossa **Capri** (55% cotton, 30% polyamide, 15% silk; 150 m/50 g) in Stone Grey (**col 11**) and **250 (300) g** of Lana Grossa **Stromboli** (60% cotton, 15% viscose, 15% polyamide, 10% silk; 150 m/50 g) in Green/Beige (**col 106**). Size 4 mm needles; size 3.5 mm crochet hook.

Selvage stitches: On every row: Purl first and last st.

Rib patt: K1, p1.

St st: K on RS, p on WS.

Full-fashion decrease: At beg of RS row, selvage st, 6 sts in rib patt, skp; at end of RS row, work to last 9 sts, k2tog, 6 sts in rib patt (beg with p1), selvage st.

Gauge: 21 sts and 28.5 rows = 10 x 10 cm in St st on size 4 mm needles.

Front: With size 4 mm needles and Capri cast on 110 (118) sts. Working a p1 selvage st at each edge, work in rib patt for 4 rows = 1 cm. Maintaining selvage sts, work in St st for 4 cm = 12 rows. Cont in St st, work next 11 cm = 32 rows with Stromboli, next 11 cm = 32 rows with Capri. Work remainder of piece in St st with Stromboli only and when 17 cm = 48 rows have been worked with Stromboli after last yarn change, shape armholes as foll: Working full-fashion dec, dec 1 st at each end of next 16 RS rows = 78 (86) sts. Work even until armhole meas 17 (18) cm and 48 (52) rows have been worked from beg of armhole shaping. Shape neck and shoulders: Next row (RS): Bind off center 20 sts. Working each side separately, bind off 3 sts at each neck edge 2 times, 2 sts 3 times, 1 st 2 times. At same time, when piece meas 3.5 cm from beg of neck shaping, shape shoulders as foll: At each shoulder edge, bind off 5 (7) sts 1 time, 5 (6) sts 2 times. No sts rem.

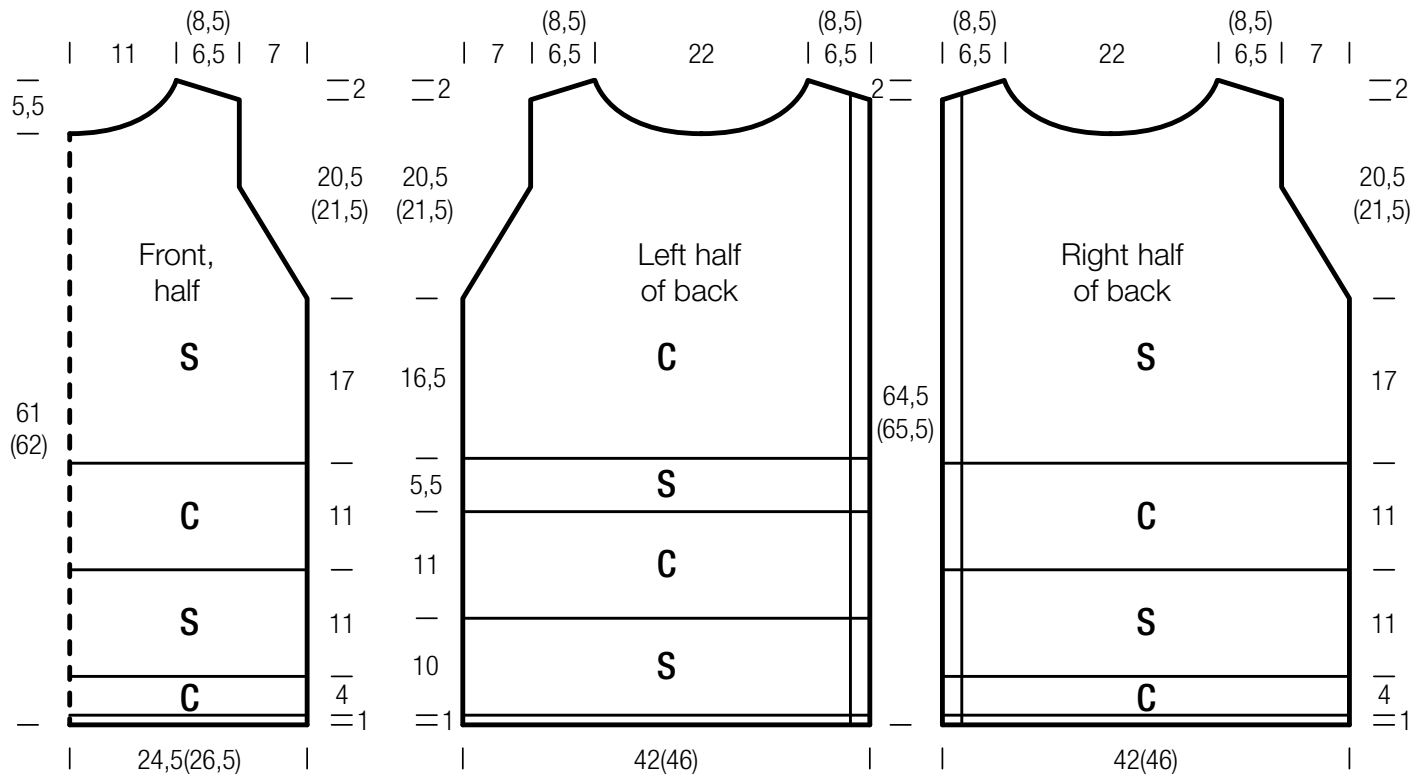
Right half of back: With size 4 mm needles and Capri cast on 94 (102) sts. Next row (RS): P1 for selvage st, * p1, k1; rep from *, end p1 for selvage st. Cont in rib patt as established for 3 more rows and piece meas 1 cm from cast-on. Next row (RS): Selvage st, 86 (94) sts in St st, 6 sts in rib patt as established, selvage st. Cont in patt as established, change yarns as given for front. When 17 cm = 48 rows have been worked with Stromboli after last yarn change, shape armhole at right edge same as for front = 78 (86) sts. Work even until armhole meas 17 (18) cm and 48 (52) rows have been worked from beg of armhole shaping. Work neck and shoulder shaping same as for front. No sts rem.

Left half of back: With size 4 mm needles and Stromboli cast on 94 (102) sts. Next row (RS): P1 for selvage st, * k1, p1; rep from *, end p1 for selvage st. Cont in rib patt as established for 3 more rows and piece meas 1 cm from cast-on. Next row (RS): Selvage st, 6 sts in rib patt as established, 86 (94) sts in St st, selvage st. Work in patt as established for a total of 10 cm = 28 rows. Cont in patt, work next 11 cm = 32 rows with Capri, next 5.5 cm = 16 rows with Stromboli. Work remainder of piece with Capri, work armhole, neck and shoulder shaping same as for right half of back, reversing all shaping.

Finishing: Pin pieces to measurements and block. With left half of back overlapping right half, sew shoulder and side seams. Neck trim: With size 3.5 mm crochet hook and Capri work 1 row sc around neck edge, working through both thicknesses at back neck edge.

TOP · CAPRI & STROMBOLI

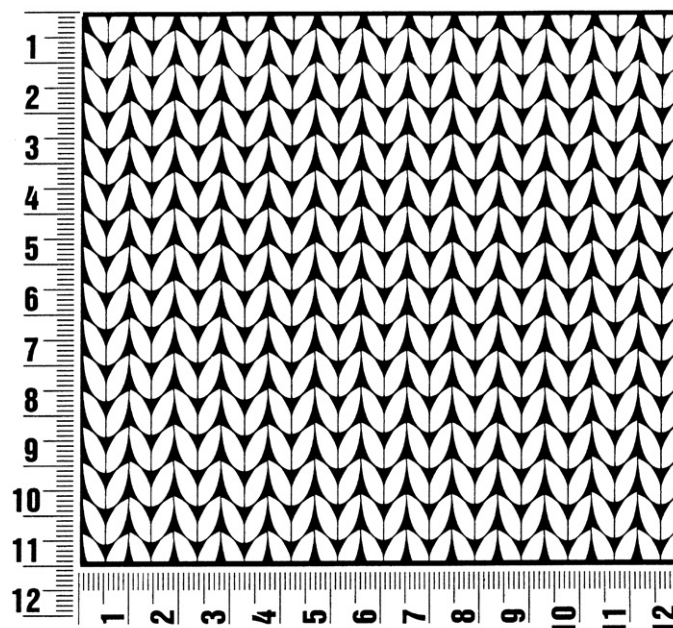
Design 01 – Filati Journal 59



Gauge Swatch

Before you begin ...

...make a gauge swatch. Use the recommended needles, yarns and pattern stitch for your gauge swatch. It should measure approx. 12 cm x 12 cm. Cast-on and bind-off rows, as well as selvage stitches should not be included in the measurement. Pin your swatch and block it as you would the finished pieces of the garment. Count stitches and rows over 10 cm. If your gauge swatch is too small, switch to larger needles. If your gauge swatch is too big, switch to smaller needles.



Abbreviations

beg = begin(ning) · **ch** = chain · **cont** = continue · **dec** = decreas(e)(ing) · **inc** = increas(e)(ing) · **k** = knit · **kwise** = as if to knit
meas = measures · **M1L** = lift strand between sts from front to back and knit this strand through the back loop · **M1R** = lift strand between sts from the back and knit this strand through the front loop · **patt** = pattern · **pm** = place marker · **p** = purl
pwise = as if to purl · **rem** = remain(ing) · **rep** = repeat(s) · **rev St st** = reverse stockinette stitch · **rnd(s)** = round(s) · **RS** = right side · **sc** = single crochet · **skp** = slip 1 stitch as if to knit, knit 1 stitch, pass slipped stitch over knitted stitch · **sk2p** = slip 1 stitch as if to knit, knit 2 together, pass slipped stitch over knitted stitch · **s2kp** = slip 2 stitches as if to knit, k 1 stitch, pass slipped stitches over knitted stitch · **sl** = slip · **st(s)** = stitch(es) · **St st** = stockinette stitch · **tbl** = through the back loop · **tog** = together · **wyib** = with yarn in back of work · **wyif** = with yarn in front of work · **WS** = wrong side · **yo(s)** = yarn over(s)

Publisher's Info

Publisher: Lana Grossa GmbH, Gaimersheim, www.lanagrossa.com

Photographer: Nicolas Olonetzky c/o Bascha Kicki Fotografen, www.bascha-photographers.de