



[www.lanagrossa.com](http://www.lanagrossa.com)

# **PULLOVER · CERTO**

Design 04 – Filati Journal 59



# PULLOVER • CERTO

## Design 04 – Filati Journal 59



**Size** 36/38 (40 – 44)

Instructions are given for smaller size. Figure in parenthesis refers to larger size. When only one figure is given, it applies to both sizes.

**Materials:** **400 (450) g** of Lana Grossa **Certo** (100% GOTS cotton; 115 m/50 g) in Natural (**col 9**) and **50 (100) g** in Off White (**col 11**). Size 7 mm needles; size 5 mm circular needle, 60 cm long; size 4 mm crochet hook.

**Slip garter selvage:** On every row: Sl first st kwise, k last st.

**Slip stitch selvage:** On every row: K first st, sl last st pwise wyif.

**St st:** K on RS, p on WS.

**Openwork patt:** Work according to chart. Numbers at right edge of chart indicate RS rows, numbers at left edge of chart indicate WS rows. Work to patt rep, work 4 sts between arrows for patt rep, work to end of chart. **Note:** 1 stitch and 1 yo are treated as 1 stitch.

**Full-fashion decrease:** At beg of RS row, selvage st, 3 sts in patt, p2tog or k2tog as needed to keep in patt; at end of RS row, work to last 6 sts, p2tog or k2tog as needed to keep in patt, 3 sts in patt, selvage st.

**Full-fashion increase:** On RS row: M1R or M1L as needed to keep in patt, 1 st in from each edge.

**Gauges:** On size 7 mm needles: 14 sts and 29 rows = 10 x 10 cm in openwork patt rows 1 – 4; 14 sts and 2 rows = 10 x 2 cm in openwork patt rows 39 and 40.

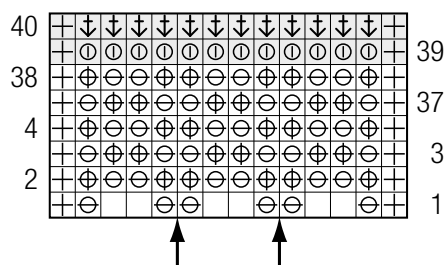
**Back:** With size 7 mm needles and Natural cast on 70 (78) sts. Working selvage sts as slip garter selvage, work rows 1 – 4 of chart once, then work rows [3 and 4] another 16 times = 36 rows, then work rows 37 and 38 once. Drop Natural, join Off White. Maintaining selvage sts, work rows 39 – 40 of chart. Rep rows 1 – 40 of chart until a total of 90 rows has been worked from cast-on and piece meas 33.5 cm. Shape raglan: Next RS (dec) row: Work in patt and working full-fashion dec, dec 1 st at each end of row. Cont in patt, rep dec row [every alt RS row 1 time, then every foll RS row 1 time] 10 times, then every foll RS row 2 (6) times = 24 sts. Work even until a total of 74 (82) rows has been worked from beg of raglan shaping and raglan meas 28 (30.5) cm. Bind off all sts.

**Front:** Work same as back until 30 (38) rows have been worked from beg of raglan shaping and raglan meas 11.5 (14) cm. Divide work at center for slit. Working each side separately and working a slip st selvage at each slit edge, cont in patt and cont raglan shaping until a total of 74 (82) rows has been worked from beg of raglan shaping and raglan meas 28 (30.5) cm. Bind off rem 12 sts for each side.

**Sleeves:** With size 7 mm needles and Natural cast on 34 (42) sts. Work in openwork patt same as for back and shape sleeve as foll: Working full-fashion inc, inc 1 st at each end of 13th row from cast-on, then every 12th row 5 times = 46 (54) sts. Work increased sts into patt. Work even until piece meas 33.5 cm and a total of 90 rows has been worked from cast-on. Shape sleeve cap: Next RS (dec) row: Work in patt and working full-fashion dec, dec 1 st at each end of row. Cont in patt, rep dec row every alt RS row 12 times, then every foll RS row 5 (9) times = 10 sts. Work even until a total of 74 (82) rows has been worked from beg of cap shaping and sleeve cap meas 28 (30.5) cm. Bind off all sts.

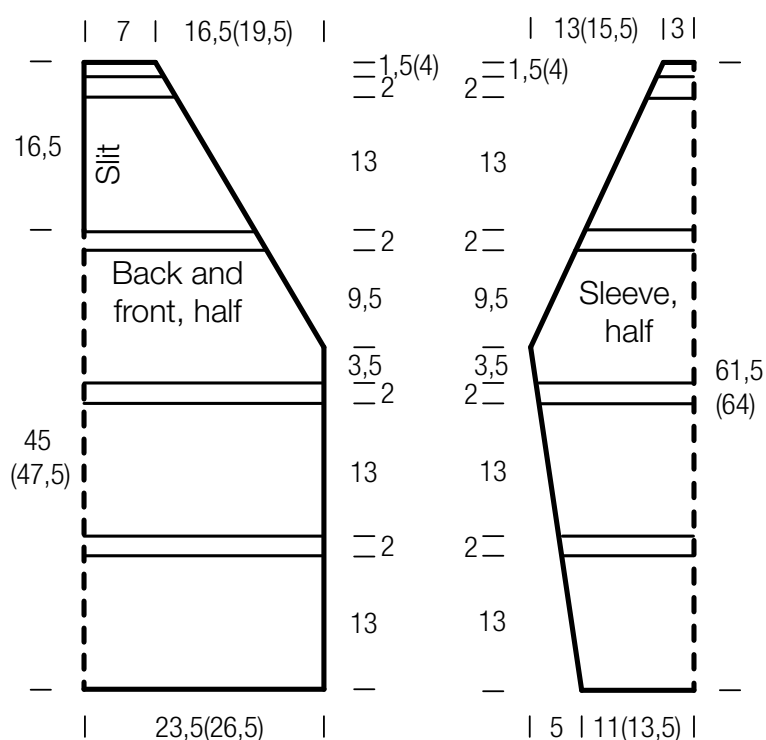
**Finishing:** Pin pieces to measurements and block. Sew raglan, side and sleeve seams. **Neck and slit edging:** With size 4 mm crochet hook and Natural, work 1 row sc along slit and neck edge. Fasten off. With size 5 mm circular needle, Natural and WS facing, pick up and k 23 sts evenly in sc row at left slit edge. Beg with a RS row work in St st for 6 rows. Loosely bind off all sts. Rep for right slit edge. Tack down edgings at bottom of slit. With size 5 mm circular needle and Natural, WS facing and beg 3 rows in from left slit edging and end 3 rows in from right slit edging, pick up and k 56 sts evenly in sc row along neck edge. Work rolled edging same as for slit. Tack down ends at top of slit.

### Chart



### Chart key:

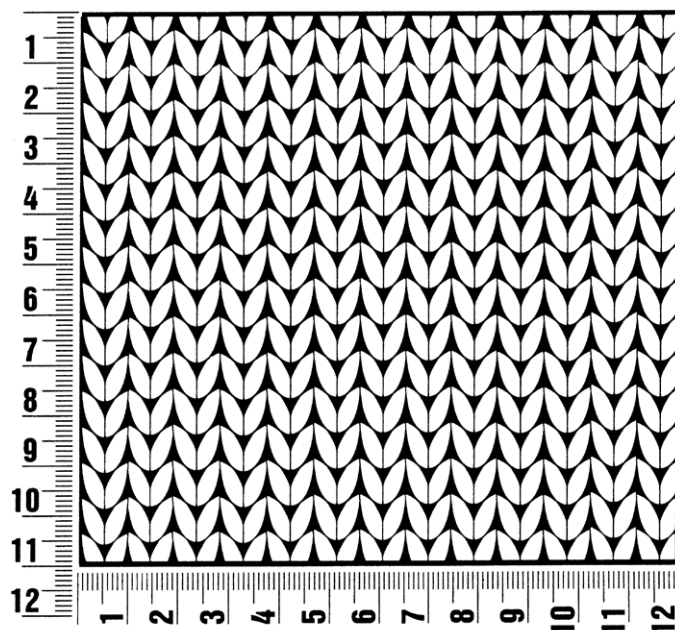
- ⊕ = selvage st
- = k1
- ⊙ = make a yo, then sl next st pwise
- ⊗ = ktog slipped st with its yo
- ⊙ = k1, make a yo
- ⊙ = p1, dropping yo and pulling st up to elongate



## Gauge Swatch

### Before you begin ...

...make a gauge swatch. Use the recommended needles, yarns and pattern stitch for your gauge swatch. It should measure approx. 12 cm x 12 cm. Cast-on and bind-off rows, as well as selvage stitches should not be included in the measurement. Pin your swatch and block it as you would the finished pieces of the garment. Count stitches and rows over 10 cm. If your gauge swatch is too small, switch to larger needles. If your gauge swatch is too big, switch to smaller needles.



## Abbreviations

**beg** = begin(ning) · **ch** = chain · **cont** = continue · **dec** = decreas(e)(ing) · **inc** = increas(e)(ing) · **k** = knit · **kwise** = as if to knit  
**meas** = measures · **M1L** = lift strand between sts from front to back and knit this strand through the back loop · **M1R** = lift strand between sts from the back and knit this strand through the front loop · **patt** = pattern · **pm** = place marker · **p** = purl  
**pwise** = as if to purl · **rem** = remain(ing) · **rep** = repeat(s) · **rev St st** = reverse stockinette stitch · **rnd(s)** = round(s) · **RS** = right side · **sc** = single crochet · **skp** = slip 1 stitch as if to knit, knit 1 stitch, pass slipped stitch over knitted stitch · **sk2p** = slip 1 stitch as if to knit, knit 2 together, pass slipped stitch over knitted stitch · **s2kp** = slip 2 stitches as if to knit, k 1 stitch, pass slipped stitches over knitted stitch · **sl** = slip · **st(s)** = stitch(es) · **St st** = stockinette stitch · **tbl** = through the back loop · **tog** = together · **wyib** = with yarn in back of work · **wyif** = with yarn in front of work · **WS** = wrong side · **yo(s)** = yarn over(s)

### Publisher's Info

**Publisher:** Lana Grossa GmbH, Gaimersheim, [www.lanagrossa.com](http://www.lanagrossa.com)  
**Photographer:** Nicolas Olonetzky c/o Bascha Kicki Fotografen, [www.bascha-photographers.de](http://www.bascha-photographers.de)