



www.lanagrossa.com

JACKET · TREFILI

Design 08 — Filati Journal 59

JACKET · TREFILI

Design 08 – Filati Journal 59



Size 34/36 (38/40, 42/44)

Instructions are given for first size. Figures in parenthesis refer to larger sizes. When only one figure is given, it applies to all sizes.

Materials: 400 (450, 500) g of Lana Grossa **Trefili** (62% cotton, 26% viscose, 12% linen; 160 m/50 g) in Cream/Light Grey (**col 11**). Size 4.5 mm needles; size 3.5 mm crochet hook; thin leather band in dark brown, 20 cm long.

Selvage stitches: On every row: Sl first st kwise, k last st.

Two-stitch selvage: On RS row: K2 at beg and end of row; on WS row: Sl 2 pwise wyif at beg and end of row.

Drop stitch /rib patt: Work according to chart. Numbers at right edge of chart indicate RS rows, numbers at left edge of chart indicate WS rows. Work to patt rep, work sts between arrows for patt rep, work to end of chart. **Drop st patt (A):** Work rows 1 – 34 once, then work rows 15 – 34 once more = 54 rows total, then work rows 55 – 64 once. **Rib patt (B):** Rep rows 65 and 66 for rib patt.

Full-fashion decrease A [armhole shaping]: At beg of RS row, selvage st, k1tbl, p2tog; at end of RS row, work to last 4 sts, p2tog, k1tbl, selvage st.

Full-fashion decrease B [front neck shaping]: At beg of RS row, two-stitch selvage, k1tbl, p2tog; at end of RS row, work to last 5 sts, p2tog, k1tbl, two-stitch selvage.

Full-fashion decrease C [sleeve cap shaping]: At beg of RS row, selvage st, p1, k1tbl, p2tog; at end of RS row, work to last 5 sts, p2tog, k1tbl, p1, selvage st.

Gauges: On size 4.5 mm needles: 18 sts [= 3 patt reps] and 25 rows = 10 x 10 cm in drop st patt; 24 sts and 28 rows = 10 x 10 cm in rib patt, measured slightly stretched.

Back: With size 4.5 mm needles cast on 104 (116, 128) sts. Purl 1 WS row. Work in drop st patt according to chart, working the patt rep 16 (18, 20) times across row. Work in drop st patt for a total of 64 rows = 25.5 cm. Work in rib patt accord-

ing to chart for 22 cm = 62 rows. Shape armholes: Bind off 4 sts at beg of next 2 rows. Working full-fashion dec A, dec 1 st at each end of next 7 RS rows, then every alt RS row 2 times = 78 (90, 102) sts. Work even until armhole meas 20 (21, 22) cm and 56 (60, 62) rows have been worked from beg of armhole shaping. Shape shoulders: Bind off 6 (8, 10) sts at beg of next 2 rows, 6 (8, 10) sts at beg of next 4 rows. Bind off rem 42 sts.

Left front: With size 4.5 mm needles cast on 59 (65, 71) sts. Purl 1 WS row. Next row (RS): Work row 1 of chart: Work 2 sts to patt rep, work patt rep 9 (10, 11) times, work 1 st after patt rep, two-stitch selvage. Work in patt as established for a total of 64 rows = 25.5 cm. Maintaining selvage sts, work in rib patt according to chart until same length as back to armhole. Shape armhole at right edge same as for back. **At same time,** on first row of armhole shaping [when armhole meas 1 (2) cm and 4 (6) rows have been worked from beg of armhole shaping], shape front neck as foll: Working full-fashion dec B, dec 1 st at end of next 25 RS rows, then every alt RS row 2 times. Work even until same length as back to shoulder. Shape shoulder: At beg of RS rows, bind off 6 (8, 10) sts 1 time, 6 (8, 10) sts 2 times. No sts rem.

Right front: Work same as left front, reversing all shaping and patt placement.

Sleeves: With size 4.5 mm needles cast on 68 (74, 80) sts. Purl 1 WS row. Work in drop st patt according to chart, working the patt rep 10 (11, 12) times across row. Work in drop st patt for a total of 64 rows = 25.5 cm. Work in rib patt according to chart for 20 cm = 56 rows. Shape sleeve cap: Bind off 4 sts at beg of next 2 rows, 2 sts at beg of next 2 rows. Working full-fashion dec C, dec 1 st at each end of next 16 RS rows. Work 1 WS row. Bind off 2 sts at beg of next 4 rows. Bind off rem 16 (22, 28) sts.

Finishing: Pin pieces to measurements and block. Sew shoulder seams. **Front and neck trim:** With size 3.5 mm crochet hook, work 1 row sl st along right front, back neck and left front edge. Sew in sleeves. Sew side and sleeve seams. To close, use leather band as shown in photo.

JACKET · TREFILI

Design 08 – Filati Journal 59



Chart A/B

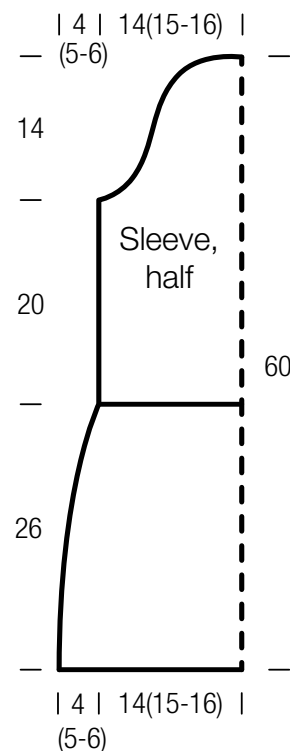
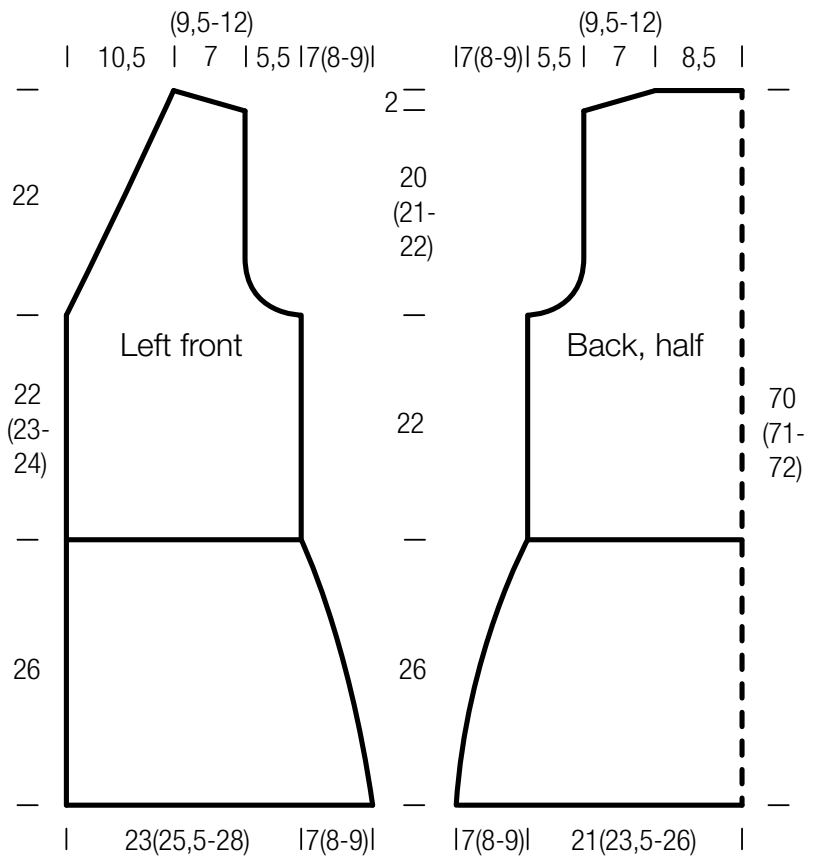
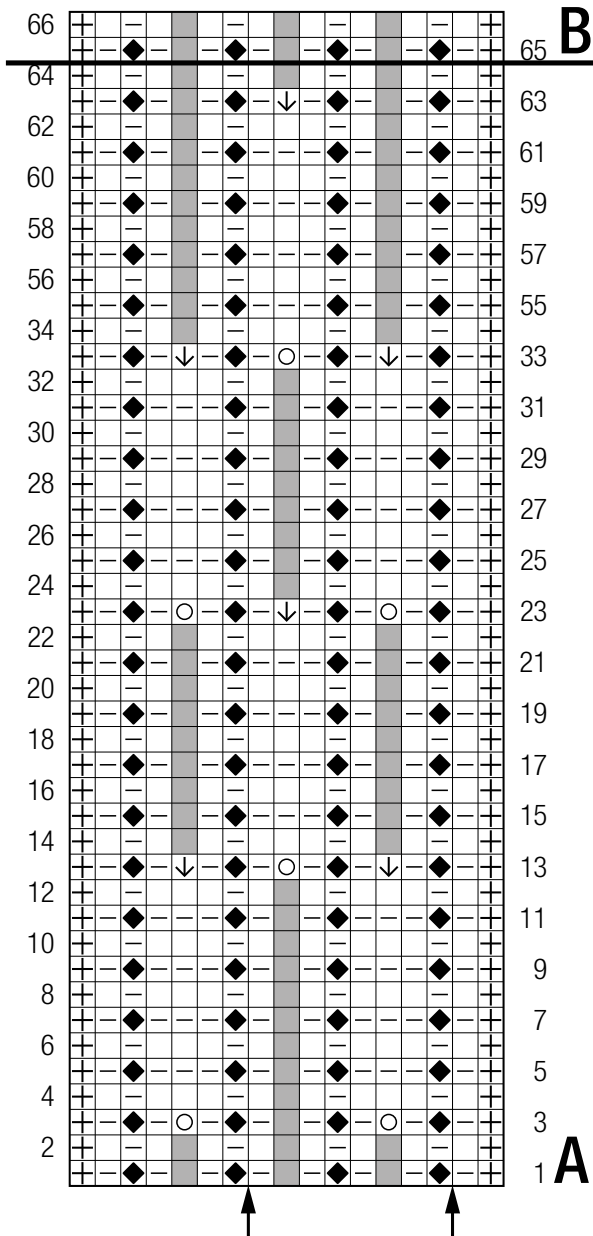


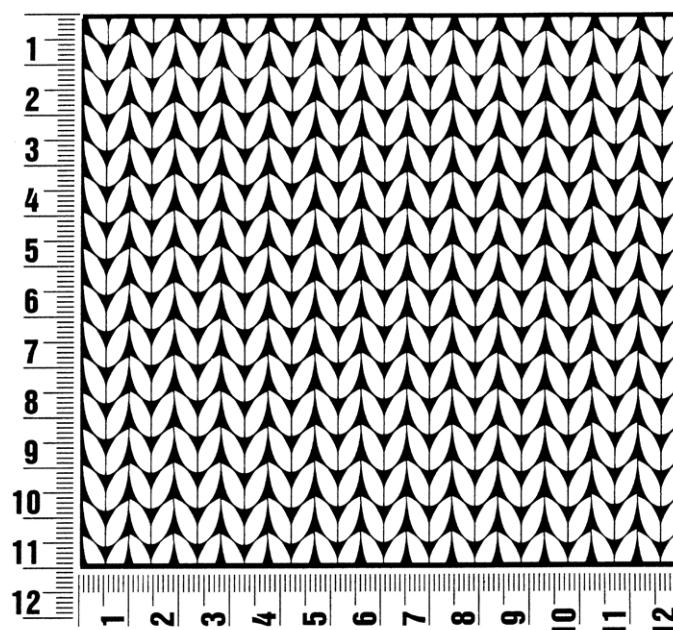
Chart key:

- ⊕ = selvage st
- = k1
- = p1
- = yo
- ◆ = k1tbl
- ↓ = drop st and unravel down to row where yo was made
- = represents “no stitch” (included to keep st count correct)

Gauge Swatch

Before you begin ...

...make a gauge swatch. Use the recommended needles, yarns and pattern stitch for your gauge swatch. It should measure approx. 12 cm x 12 cm. Cast-on and bind-off rows, as well as selvage stitches should not be included in the measurement. Pin your swatch and block it as you would the finished pieces of the garment. Count stitches and rows over 10 cm. If your gauge swatch is too small, switch to larger needles. If your gauge swatch is too big, switch to smaller needles.



Abbreviations

beg = begin(ning) · **ch** = chain · **cont** = continue · **dec** = decreas(e)(ing) · **inc** = increas(e)(ing) · **k** = knit · **kwise** = as if to knit
meas = measures · **M1L** = lift strand between sts from front to back and knit this strand through the back loop · **M1R** = lift strand between sts from the back and knit this strand through the front loop · **patt** = pattern · **pm** = place marker · **p** = purl
pwise = as if to purl · **rem** = remain(ing) · **rep** = repeat(s) · **rev St st** = reverse stockinette stitch · **rnd(s)** = round(s) · **RS** = right side · **sc** = single crochet · **skp** = slip 1 stitch as if to knit, knit 1 stitch, pass slipped stitch over knitted stitch · **sk2p** = slip 1 stitch as if to knit, knit 2 together, pass slipped stitch over knitted stitch · **s2kp** = slip 2 stitches as if to knit, k 1 stitch, pass slipped stitches over knitted stitch · **sl** = slip · **st(s)** = stitch(es) · **St st** = stockinette stitch · **tbl** = through the back loop · **tog** = together · **wyib** = with yarn in back of work · **wyif** = with yarn in front of work · **WS** = wrong side · **yo(s)** = yarn over(s)

Publisher's Info

Publisher: Lana Grossa GmbH, Gaimersheim, www.lanagrossa.com
Photographer: Nicolas Olonetzky c/o Bascha Kicki Fotografen, www.bascha-photographers.de