



www.lanagrossa.com

PULLOVER ·
ABOUT BERLIN CHILLY DÉGRADÉ
Design 20 – Filati Journal 59

PULLOVER .

ABOUT BERLIN CHILLY DÉGRADÉ

Design 20 – Filati Journal 59



Size 36/38 (40/42, 44/46)

Instructions are given for first size. Figures in parenthesis refer to larger sizes. When only one figure is given, it applies to all sizes.

Materials: 450 g of Lana Grossa **About Berlin Chilly Dégradé** (100% linen; 95 m/50 g) in Plum (col 107). Size 4.5 and 5.5 mm needles; size 4.5 mm circular needle, 60 cm long.

Selvage stitches: On every row: K first st, sl last st pwise wyif.

Rib patt: K1, p1.

Half-brioche rib: Work according to chart. Number at left edge of chart indicates WS row, number at right edge of chart indicates RS row. Chart begins with a WS row. Work to patt rep, work 2 sts between arrows for patt rep, work to end of chart. Rep rows 1 and 2. **Note:** 1 stitch and 1 yo are treated as 1 stitch.

Gauge: 15 sts and 30 rows = 10 x 10 cm in half-brioche rib on size 5.5 mm needles.

Back: With size 5.5 mm needles cast on 27 (33, 39) sts. Next row (WS): Work row 1 of half-brioche rib chart. Cont to foll chart and shape curved hem as foll: Cast on 5 sts at beg of next 2 rows, 2 sts at beg of next 4 rows. Inc 1 st at each end of next 12 RS rows. Work 1 WS row. Cast on 6 sts at beg of next 2 rows = 81 (87, 93) sts. Work increased and cast-on sts into half-brioche rib. Work even for 76 (78, 82) rows = 25 (26, 27) cm. Place marker in first and last st on last WS row to indicate beg of armholes. Work even until 60 (64, 66) rows have been worked from armhole markers and armhole meas 20 (21, 22) cm. Bind off all sts. Mark center 35 sts for neck.

Front: Work same as back until 30 (34, 36) rows have been worked from armhole markers and armhole meas 10 (11, 12) cm. Shape neck: Next row (RS): Bind off center 15 sts. Working each side separately, bind off 5 sts at each neck edge 1 time, 2 sts 1 time, 1 st 3 times and when same length as back to shoulders, bind off rem 23 (26, 29) sts for each shoulder.

Sleeves: With size 4.5 mm needles cast on 35 (39, 41) sts. Next row (WS): Selvage st, * p1, k1; rep from * to last 2 sts, p1, selvage st. Cont in rib patt as established for 10 more rows and piece meas 3.5 cm from cast-on. Change to size 5.5 mm needles. Beg with a WS row, work in half-brioche rib according to chart and shape sleeve as foll: Inc 1 st at each end of every 8th row 14 times = 63 (67, 69) sts. Work increased sts into half-brioche rib. Work even until a total of 131 rows has been worked in half-brioche rib = 43.5 cm. Loosely bind off all sts in patt.

Finishing: Pin pieces to measurements and block. **Bottom rib, front:** With size 4.5 mm circular needle, RS facing, beg and end 6 sts in from each edge, pick up and k 95 (101, 107) sts evenly along cast-on edge of front. Work in rib patt for 3.5 cm. Bind off all sts in rib. Sew short edges of bottom rib to the 6 cast-on sts at each edge of cast-on edge. Work bottom rib at back in same way. Sew shoulder seams. **Neckband:** With size 4.5 mm circular needle, pick up and k 122 sts evenly around neck edge. Place beg of rnd marker and join for working in rnds. Work rib patt in rnds for 3.5 cm. Bind off all sts in rib. Sew on sleeves between markers. Sew side and sleeve seams.

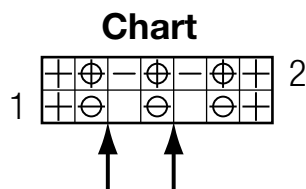


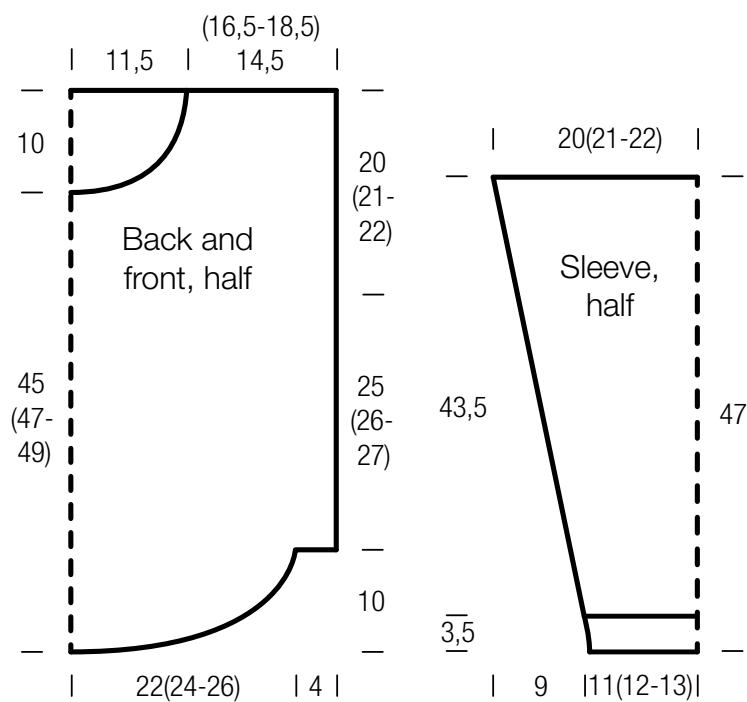
Chart key:

- ⊕ = selvage st
- = k1
- ⊖ = p1
- ⊖ = make a yo, then sl next st pwise
- ⊕ = ktog slipped st with its yo

PULLOVER .

ABOUT BERLIN CHILLY DÉGRADÉ

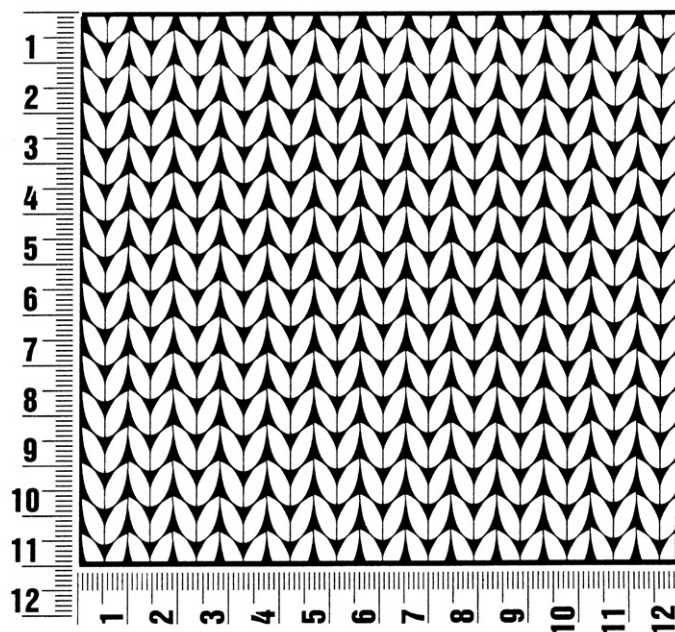
Design 20 – Filati Journal 59



Gauge Swatch

Before you begin ...

...make a gauge swatch. Use the recommended needles, yarns and pattern stitch for your gauge swatch. It should measure approx. 12 cm x 12 cm. Cast-on and bind-off rows, as well as selvage stitches should not be included in the measurement. Pin your swatch and block it as you would the finished pieces of the garment. Count stitches and rows over 10 cm. If your gauge swatch is too small, switch to larger needles. If your gauge swatch is too big, switch to smaller needles.



Abbreviations

beg = begin(ning) · **ch** = chain · **cont** = continue · **dec** = decreas(e)(ing) · **inc** = increas(e)(ing) · **k** = knit · **kwise** = as if to knit
meas = measures · **M1L** = lift strand between sts from front to back and knit this strand through the back loop · **M1R** = lift strand between sts from the back and knit this strand through the front loop · **patt** = pattern · **pm** = place marker · **p** = purl
pwise = as if to purl · **rem** = remain(ing) · **rep** = repeat(s) · **rev St st** = reverse stockinette stitch · **rnd(s)** = round(s) · **RS** = right side · **sc** = single crochet · **skp** = slip 1 stitch as if to knit, knit 1 stitch, pass slipped stitch over knitted stitch · **sk2p** = slip 1 stitch as if to knit, knit 2 together, pass slipped stitch over knitted stitch · **s2kp** = slip 2 stitches as if to knit, k 1 stitch, pass slipped stitches over knitted stitch · **sl** = slip · **st(s)** = stitch(es) · **St st** = stockinette stitch · **tbl** = through the back loop · **tog** = together · **wyib** = with yarn in back of work · **wyif** = with yarn in front of work · **WS** = wrong side · **yo(s)** = yarn over(s)

Publisher's Info

Publisher: Lana Grossa GmbH, Gaimersheim, www.lanagrossa.com
Photographer: Nicolas Olonetzky c/o Bascha Kicki Fotografen, www.bascha-photographers.de