



[www.lanagrossa.com](http://www.lanagrossa.com)

## **PULLOVER · TREFILI**

Design 42 – Filati Journal 59

# PULLOVER • TREFILI

## Design 42 – Filati Journal 59



**Size** One size

**Materials:** 450 g of Lana Grossa **Trefili** (62% cotton, 26% viscose, 12% linen; 160 m/50 g) in Orange/Coral (**col 5**). Size 4 mm circular needle, 80 cm long; size 3 mm needles.

**Selvage stitches:** On every row: Sl first st kwise, k last st.

**3x3 rib:** K3, p3.

**St st:** K on RS, p on WS.

**Main patt:** Work according to chart. Numbers at right edge of chart indicate RS rows, numbers at left edge of chart indicate WS rows. Work rows 1 – 70 once, then rep rows 67 – 70. Shape sides with short-rows as shown chart. Always turn with a yo at end of short-row (yo is not included on chart). Always work yo tog with next st as k2tog to prevent holes. Short-rows are worked on chart rows 5 – 21.

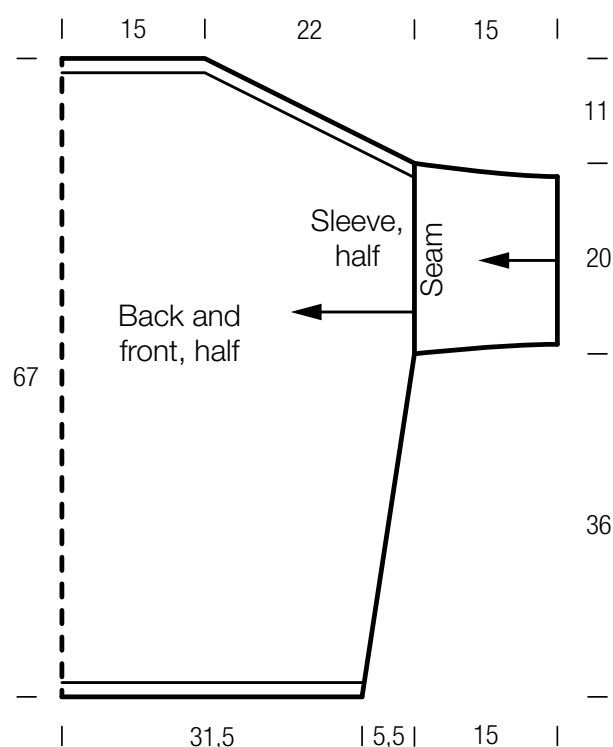
**Full-fashion decrease:** At beg of RS row, patt over first 5 sts, k2tog, patt to end.

**Gauge:** 23 sts and 29 rows = 10 x 10 cm in main patt on size 4 mm needles.

**Back:** Worked side to side. Arrow on schematic shows direction of work. With size 4 mm circular needle cast on 130 sts. Work main patt according to chart, working 16 short-rows as shown on chart (rows 5 – 21). Work incs at right edge as shown on chart (rows 6 – 64) to shape shoulder/overarm – 26 sts increased, 156 sts on the needle and piece meas 22 cm from cast-on. Place marker at right edge to indicate end of shoulder/beg of neck. Work even for 44 rows = 15 cm and center of back has been reached. Work right half of back same as left half, reversing all shaping, that is: Work matching full-fashion decs at right edge to shape shoulder/overarm. At same time, when working 19th decrease, work short-rows in reverse. After all short-rows have been worked, work last 4 chart rows across all sts. Bind off all sts.

**Front:** Work same as back.

**Finishing:** Pin pieces to measurements and block. Sew shoulder/overarm seams. **Armhole bands:** With size 3 mm needles cast on 113 sts. Next row (RS): Selvage st, p3, \* k3, p3; rep from \*, end selvage st. Cont in 3x3 rib as established until band meas 15 cm from cast-on. Loosely bind off all sts in rib. Place markers 20 cm down from shoulders on front and back. Sew bound-off edge of armhole bands to side edge between markers. Sew side and armhole band seams.



# PULLOVER · TREFILI

## Design 42 – Filati Journal 59

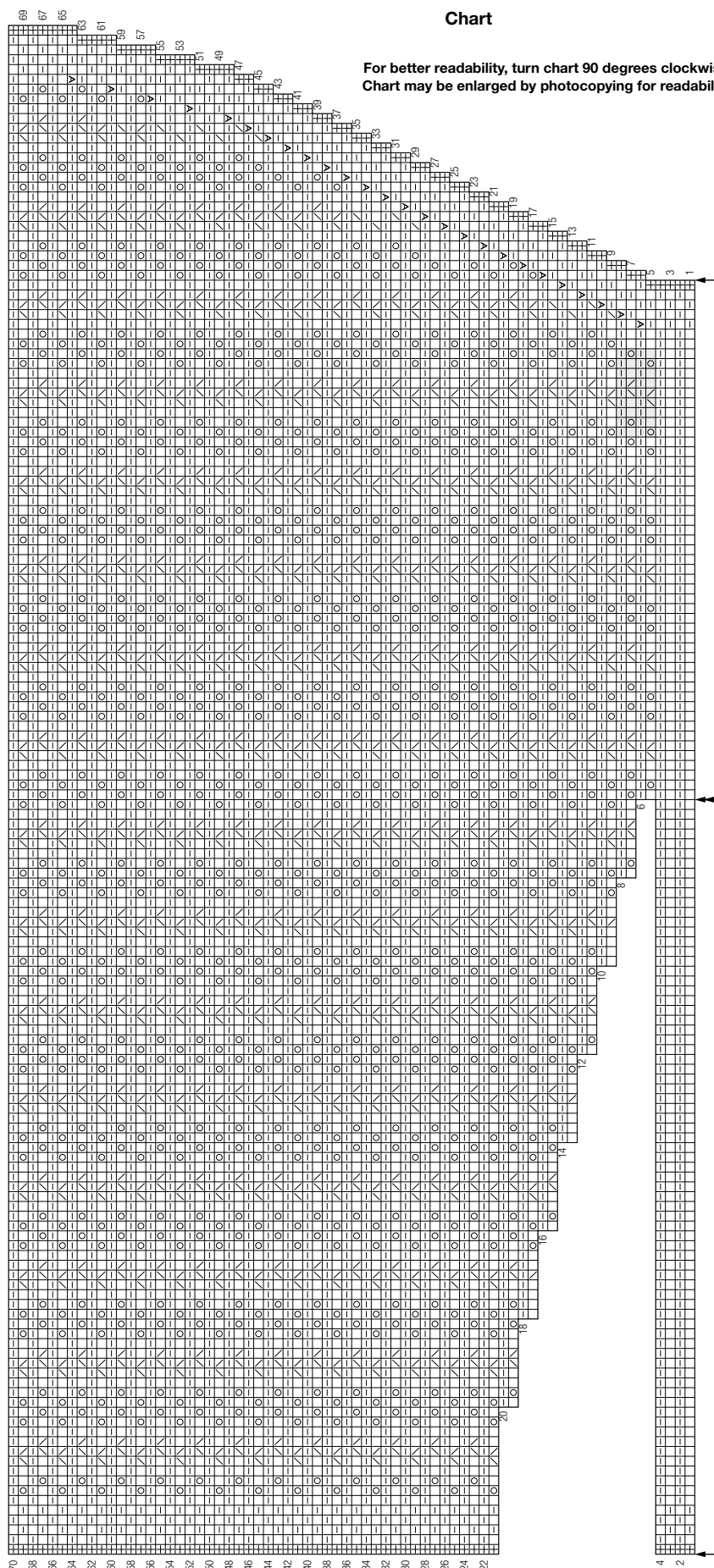


Chart

For better readability, turn chart 90 degrees clockwise.  
Chart may be enlarged by photocopying for readability.

### Chart key:

- ⊞ = selvage st
- = k1
- ▢ = p1
- = yo
- ▤ = k2tog
- ▥ = skp: sl 1 kwise, k1, pass  
slipped st over knitted st
- ▧ = M1L

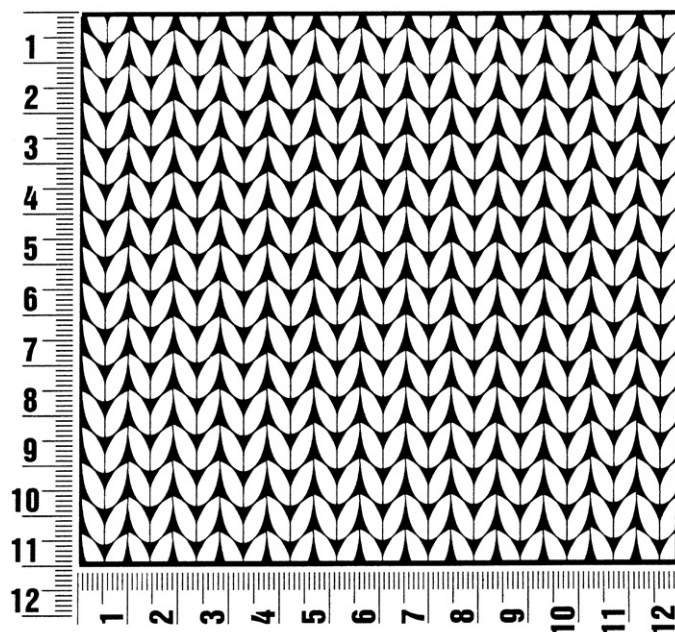




## Gauge Swatch

### Before you begin ...

...make a gauge swatch. Use the recommended needles, yarns and pattern stitch for your gauge swatch. It should measure approx. 12 cm x 12 cm. Cast-on and bind-off rows, as well as selvage stitches should not be included in the measurement. Pin your swatch and block it as you would the finished pieces of the garment. Count stitches and rows over 10 cm. If your gauge swatch is too small, switch to larger needles. If your gauge swatch is too big, switch to smaller needles.



## Abbreviations

**beg** = begin(ning) · **ch** = chain · **cont** = continue · **dec** = decreas(e)(ing) · **inc** = increas(e)(ing) · **k** = knit · **kwise** = as if to knit  
**meas** = measures · **M1L** = lift strand between sts from front to back and knit this strand through the back loop · **M1R** = lift strand between sts from the back and knit this strand through the front loop · **patt** = pattern · **pm** = place marker · **p** = purl  
**pwise** = as if to purl · **rem** = remain(ing) · **rep** = repeat(s) · **rev St st** = reverse stockinette stitch · **rnd(s)** = round(s) · **RS** = right side · **sc** = single crochet · **skp** = slip 1 stitch as if to knit, knit 1 stitch, pass slipped stitch over knitted stitch · **sk2p** = slip 1 stitch as if to knit, knit 2 together, pass slipped stitch over knitted stitch · **s2kp** = slip 2 stitches as if to knit, k 1 stitch, pass slipped stitches over knitted stitch · **sl** = slip · **st(s)** = stitch(es) · **St st** = stockinette stitch · **tbl** = through the back loop · **tog** = together · **wyib** = with yarn in back of work · **wyif** = with yarn in front of work · **WS** = wrong side · **yo(s)** = yarn over(s)

### Publisher's Info

**Publisher:** Lana Grossa GmbH, Gaimersheim, [www.lanagrossa.com](http://www.lanagrossa.com)  
**Photographer:** Nicolas Olonetzky c/o Bascha Kicki Fotografen, [www.bascha-photographers.de](http://www.bascha-photographers.de)