



www.lanagrossa.com

JACKET · CERTO

Design 43 – Filati Journal 59

JACKET • CERTO

Design 43 – Filati Journal 59



Size 36/38 (40/42)

Instructions are given for smaller size. Figure in parenthesis refers to larger size. When only one figure is given, it applies to both sizes.

Materials: 600 (650) g of Lana Grossa **Certo** (100% GOTS cotton; 115 m/50 g) in Pink/Yellow-Orange/Natural (**col 101**). Size 5 and 6.5 mm needles; size 6.5 mm circular needle, 100 cm long; size 5 mm crochet hook.

Selvage stitches: On every row: Sl first st kwise, k last st.

Slip stitch patt: Work according to chart. Numbers at right edge of chart indicate RS rows, numbers at left edge of chart indicate WS rows. Work to patt rep, work 3 sts between arrows for patt rep, work to end of chart. Work rows 1 – 8 once, then rep rows 5 – 8.

Gauge: 21.5 sts and 32 rows = 10 x 10 cm in slip st patt on size 6.5 mm needles.

Back: With size 5 mm needles cast on 96 (108) sts. Knit 1 WS row. Change to size 6.5 mm needles. Work in slip st patt according to chart for 32 rows and piece meas 10 cm from cast-on. Shape sides and sleeves: Cont in patt, inc 1 st at each end of next 19 RS rows. Work 1 WS row. Cast on 2 sts at beg of next 10 rows, 3 sts at beg of next 8 rows, 4 sts at beg of next 8 rows = 210 (222) sts. Work increased sts into patt. Change to circular needle as necessary. Work even in patt for 54 (58) rows = 17 (18) cm. Shape shoulders/overarms and neck: At each shoulder edge, bind off 10 (11) sts 1 time, 10 sts 5 (10) times, 9 sts 5 (0) times. At same time, when piece meas 1 cm from beg of shoulder/overarm shaping, on next RS row, divide work at center for back neck slit and work each side separately to end of shoulder/overarm shaping. No sts rem.

Left front: With size 5 mm needles cast on 48 (54) sts. Knit 1 WS row. Change to size 6.5 mm needles. Work in slip st patt according to chart for 32 rows and piece meas 10 cm from cast-on. Work side and sleeve shaping at right edge same as for back = 57 sts increased and 105 (111) sts on the needle. Work increased sts into patt. Change to circular needle as necessary. Work even in patt for 54 (58) rows = 17 (18) cm. Shape shoulder/overarm: At beg of RS rows, bind off 10 (11) sts 1 time, 10 sts 5 (10) times, 9 sts 5 (0) times. No sts rem.

Right front: Work same as left front, reversing all shaping and patt placement.

Finishing: Pin pieces to measurements and block. Sew shoulder/overarm seams. Sew side and sleeve seams. With size 5 mm crochet hook, work 1 row sl st along right front, back neck slit and left front edge. With size 5 mm crochet hook, work 1 rnd sl st around each sleeve edge.

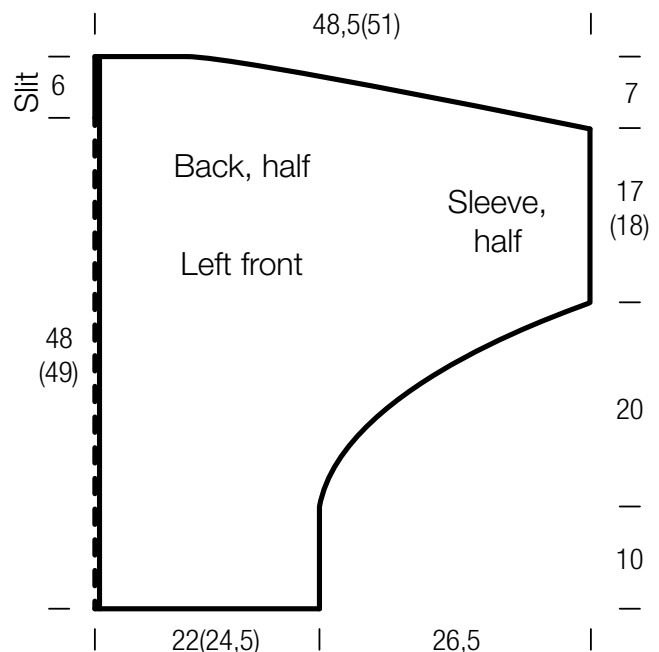
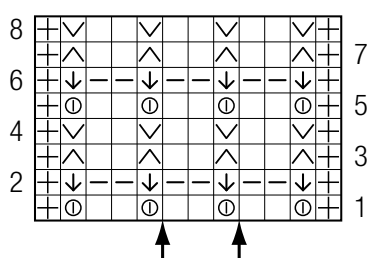


Chart key:

- ⊕ = selvage st
- = k1
- ▬ = p1
- ⊙ = k1, make yo
- ↓ = sl 1 pwise wyif, dropping yo and pulling st up to elongate
- ∇ = sl 1 pwise wyif
- △ = sl 1 pwise wyib

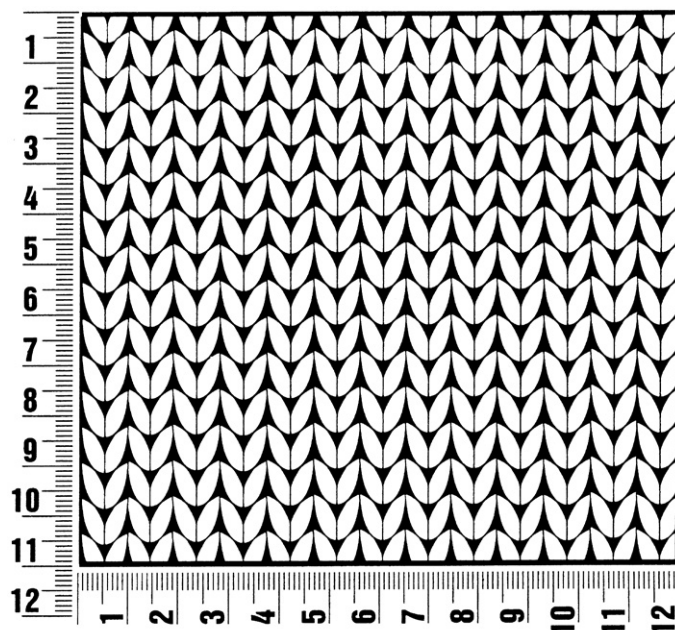
Chart



Gauge Swatch

Before you begin ...

...make a gauge swatch. Use the recommended needles, yarns and pattern stitch for your gauge swatch. It should measure approx. 12 cm x 12 cm. Cast-on and bind-off rows, as well as selvage stitches should not be included in the measurement. Pin your swatch and block it as you would the finished pieces of the garment. Count stitches and rows over 10 cm. If your gauge swatch is too small, switch to larger needles. If your gauge swatch is too big, switch to smaller needles.



Abbreviations

beg = begin(ning) · **ch** = chain · **cont** = continue · **dec** = decreas(e)(ing) · **inc** = increas(e)(ing) · **k** = knit · **kwise** = as if to knit
meas = measures · **M1L** = lift strand between sts from front to back and knit this strand through the back loop · **M1R** = lift strand between sts from the back and knit this strand through the front loop · **patt** = pattern · **pm** = place marker · **p** = purl
pwise = as if to purl · **rem** = remain(ing) · **rep** = repeat(s) · **rev St st** = reverse stockinette stitch · **rnd(s)** = round(s) · **RS** = right side · **sc** = single crochet · **skp** = slip 1 stitch as if to knit, knit 1 stitch, pass slipped stitch over knitted stitch · **sk2p** = slip 1 stitch as if to knit, knit 2 together, pass slipped stitch over knitted stitch · **s2kp** = slip 2 stitches as if to knit, k 1 stitch, pass slipped stitches over knitted stitch · **sl** = slip · **st(s)** = stitch(es) · **St st** = stockinette stitch · **tbl** = through the back loop · **tog** = together · **wyib** = with yarn in back of work · **wyif** = with yarn in front of work · **WS** = wrong side · **yo(s)** = yarn over(s)

Publisher's Info

Publisher: Lana Grossa GmbH, Gaimersheim, www.lanagrossa.com
Photographer: Nicolas Olonetzky c/o Bascha Kicki Fotografen, www.bascha-photographers.de