



www.lanagrossa.com

JACKET · TROPICO

Design 46 – Filati Journal 59

JACKET • TROPICO

Design 46 – Filati Journal 59



Size 36/38 (40/42, 44/46)

Instructions are given for first size. Figures in parenthesis refer to larger sizes. When only one figure is given, it applies to all sizes.

Materials: 350 (400, 450) g of Lana Grossa **Tropico** (70% cotton, 30% Merino wool; 125 m/50 g) in Grey/White/Turquoise-Grey/Mustard/Olive/Khaki (**col 5**). Size 4, 4.5 and 5 mm needles; size 5 mm circular needle, 100 cm long; size 4 mm circular needle, 60 cm long; one 23 mm mother-of-pearl button in beige/green [by Union Knopf, item 46286, col 14].

Selvage stitches: On every row: Sl first st kwise, k last st.

Garter st: K every row.

St st: K on RS, p on WS.

Mesh stitch: Work according to chart. Number at right edge of chart indicates RS row, number at left edge of chart indicates WS row. Work to patt rep, work 2 sts between arrows for patt rep, work to end of chart. Rep rows 1 and 2.

Gauges: 16 sts and 28 rows = 10 x 10 cm in St st on size 5 mm needles; 15.5 sts and 24 rows = 10 x 10 cm in mesh st on size 4.5 mm needles.

Jacket: Worked in one piece and side to side, beginning at left sleeve. Arrow on schematic shows direction of work. With size 4 mm needles cast on 58 (62, 66) sts. Beg and end with a WS row, work in garter st for 9 rows and piece meas 2.5 cm from cast-on, decreasing 6 (8, 8) sts evenly across last WS row = 52 (54, 58) sts. Change to size 4.5 mm needles. Work mesh st according to chart and shape sleeve as foll: Inc 1 st at each end of 7th row, then every 8th row 7 times = 68 (70, 74) sts. Work increased sts into patt. Work even until 68 rows = 28 cm have been worked in mesh st. Next 2 rows: Work in patt, cast on 52 sts at beg of both rows for back and left front side edge and inc 2 sts evenly across sleeve sts on first (= RS) row = 174 (176, 180) sts. Change to size 5 mm circular needle. Next row (RS): Selvage st, 5 sts in garter st, 162 (164, 168) sts in St st, 5 sts in garter st, selvage st. Cont in patt as established for 33 (39, 45) more rows and shoulder meas 12 (14, 16) cm. Divide for back and left front: Next row (RS): Patt over 87 (88, 90) back sts and turn, leaving rem 87 (88, 90) sts on hold. **Back:** Work even for 61 more rows and back meas 22 cm from divide. Place sts on holder, do not cut yarn. **Left front:** Return held 87 (88, 90) left front sts to needle and with RS facing join new ball of yarn. Cont in patt and shape front neck edge as foll: At beg of RS rows, bind off 10 sts 1 time, 3 sts 1 time, 2 sts 1 time, 1 st 1 time; work 3 rows even, bind off 1 st at beg of next RS row = 70 (71, 73) sts. Work even until a total of 25 rows has been worked from divide and left front meas 9 cm. Beg and end with a WS row, work in garter st for 9 rows = 2.5 cm. Bind off all sts. **Right front:** With size 5 mm needles cast on 70 (71, 73) sts. Beg and end with a WS row,

work in garter st for 9 rows = 2.5 cm. Next row (RS): Selvage st, 64 (65, 67) sts in St st, 5 sts in garter st. Cont in patt as established for 13 more rows. Shape neck: Next row (RS): Work in patt, inc 1 st at beg of row, then every alt RS row 1 more time. Cast on at beg of RS rows, 2 sts 1 time, 3 sts 1 time, 10 sts 1 time = 87 (88, 90) sts. Work 1 WS row. Place sts on holder, cut yarn. Next RS (joining) row: With size 5 mm circular needle, patt over 87 (88, 90) held back sts and 87 (88, 90) held right front sts = 174 (176, 180) sts. Work right half of back, right front and right sleeve same as left half of back, left front and left sleeve, binding off sts to shape back and right front side edge and working matching decs to shape right sleeve. Bind off all sts.

Finishing: Pin piece to measurements and block. Sew side and sleeve seams. **Neckband:** With size 4 mm circular needle, pick up and k 115 sts evenly along right front, back and left front neck edge. Next row (WS): Work in garter st. Next RS (buttonhole) row: 3 sts in garter st, bind off 1 st, work in garter st to end. Next row (WS): Work in garter st, cast on 1 st over bound-off st. Cont in garter st for 6 more rows and band meas 2.5 cm from pick-up row. Bind off all sts. Sew on button.

Chart

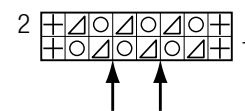
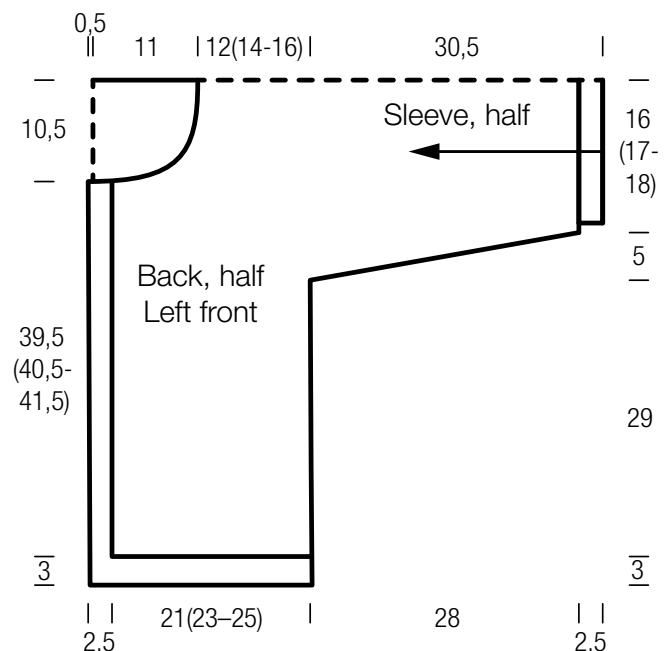


Chart key:

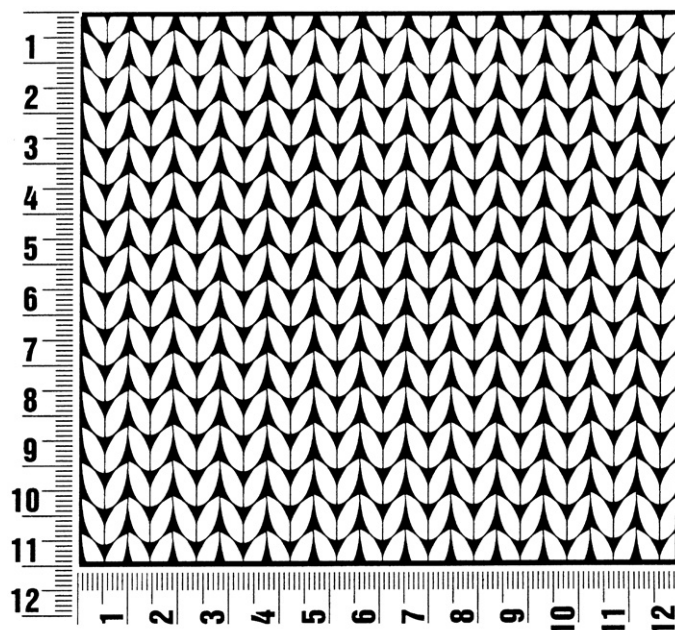
- ⊕ = selvage st
- ▤ = p2tog
- = yo



Gauge Swatch

Before you begin ...

...make a gauge swatch. Use the recommended needles, yarns and pattern stitch for your gauge swatch. It should measure approx. 12 cm x 12 cm. Cast-on and bind-off rows, as well as selvage stitches should not be included in the measurement. Pin your swatch and block it as you would the finished pieces of the garment. Count stitches and rows over 10 cm. If your gauge swatch is too small, switch to larger needles. If your gauge swatch is too big, switch to smaller needles.



Abbreviations

beg = begin(ning) · **ch** = chain · **cont** = continue · **dec** = decreas(e)(ing) · **inc** = increas(e)(ing) · **k** = knit · **kwise** = as if to knit
meas = measures · **M1L** = lift strand between sts from front to back and knit this strand through the back loop · **M1R** = lift strand between sts from the back and knit this strand through the front loop · **patt** = pattern · **pm** = place marker · **p** = purl
pwise = as if to purl · **rem** = remain(ing) · **rep** = repeat(s) · **rev St st** = reverse stockinette stitch · **rnd(s)** = round(s) · **RS** = right side · **sc** = single crochet · **skp** = slip 1 stitch as if to knit, knit 1 stitch, pass slipped stitch over knitted stitch · **sk2p** = slip 1 stitch as if to knit, knit 2 together, pass slipped stitch over knitted stitch · **s2kp** = slip 2 stitches as if to knit, k 1 stitch, pass slipped stitches over knitted stitch · **sl** = slip · **st(s)** = stitch(es) · **St st** = stockinette stitch · **tbl** = through the back loop · **tog** = together · **wyib** = with yarn in back of work · **wyif** = with yarn in front of work · **WS** = wrong side · **yo(s)** = yarn over(s)

Publisher's Info

Publisher: Lana Grossa GmbH, Gaimersheim, www.lanagrossa.com
Photographer: Nicolas Olonetzky c/o Bascha Kicki Fotografen, www.bascha-photographers.de