



www.lanagrossa.com

WRAP · GOMITOLO DENIM INCA

Design 04 – Filati Gomitolo 05

WRAP · GOMITOLO DENIM INCA

Design 04 – Filati Gomitolo 05



Size 70 x 200 cm

Materials: 400 g each of Lana Grossa **Gomitolo Denim Inca** (80% cotton, 20% polyamide; 740 m/200 g) in Khaki/Turquoise/Emerald/Light Blue/Yellow-Green/Jade/Ink/Petrol/Mustard (**col 151**) and Pink/Orange/Pink/Antique Pink/Pale Pink/Camel/Ochre (**col 155**). Size 4 mm needles.

Selvage stitches: On every row: Knit first and last st.

Garter waves: Work according to chart. Multiple of 17 + 1 + 2 selvage sts (not shown on chart). Numbers at right edge of chart indicate RS rows; on WS rows, purl all sts and yos or work according to chart key.

Gauge: 20 sts and 31 rows = 10 x 10 cm in garter waves on size 4 mm needles.

Wrap: With size 4 mm needles and col 151 cast on 139 sts. Knit 1 WS row. Next row (RS): K1 for selvage st, work row 1 of garter waves chart over next 149 sts: Work 17-st patt rep between arrows 8 times, work last st on chart; k1 for selvage st. Cont to foll chart through row 6, then work rows [7 – 20] 21 times, then work rows 7 – 16 once more = 310 rows and piece meas approx. 100 cm from cast-on. Break col 151, cont with col 155 in garter waves and work rows 17 – 20 once, then work rows [7 – 20] 21 times, then work rows 7 – 18 once = 310 rows. Loosely bind off all sts.

Finishing: Pin piece to measurements and block.

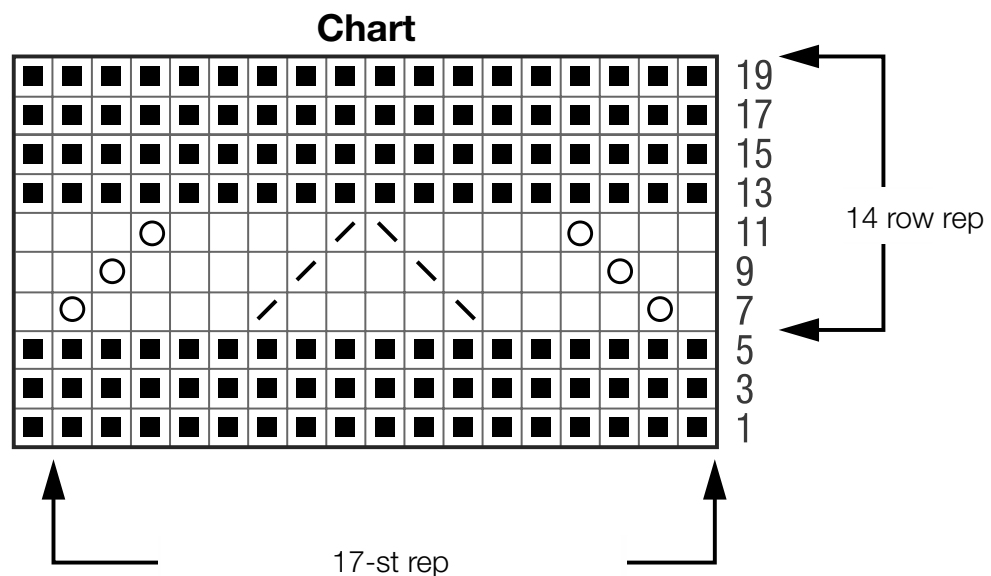


Chart key:

- = k1
- = 1 st in garter st (k1 on RS and WS)
- ⊙ = yo
- ⧻ = k2tog
- ⧻ = skp: sl 1 kwise, k1, pass slipped st over knitted st

Gauge Swatch

Before you begin ...

...make a gauge swatch. Use the recommended needles, yarns and pattern stitch for your gauge swatch. It should measure approx. 12 cm x 12 cm. Cast-on and bind-off rows, as well as selvage stitches should not be included in the measurement. Pin your swatch and block it as you would the finished pieces of the garment. Count stitches and rows over 10 cm. If your gauge swatch is too small, switch to larger needles. If your gauge swatch is too big, switch to smaller needles.



Abbreviations

beg = begin(ning) · **ch** = chain · **cont** = continue · **dec** = decreas(e)(ing) · **inc** = increas(e)(ing) · **k** = knit · **kwise** = as if to knit
meas = measures · **M1L** = lift strand between sts from front to back and knit this strand through the back loop · **M1R** = lift strand between sts from the back and knit this strand through the front loop · **patt** = pattern · **pm** = place marker · **p** = purl
pwise = as if to purl · **rem** = remain(ing) · **rep** = repeat(s) · **rev St st** = reverse stockinette stitch · **rnd(s)** = round(s) · **RS** = right side · **sc** = single crochet · **skp** = slip 1 stitch as if to knit, knit 1 stitch, pass slipped stitch over knitted stitch · **sk2p** = slip 1 stitch as if to knit, knit 2 together, pass slipped stitch over knitted stitch · **s2kp** = slip 2 stitches as if to knit, k 1 stitch, pass slipped stitches over knitted stitch · **sl** = slip · **st(s)** = stitch(es) · **St st** = stockinette stitch · **tbl** = through the back loop · **tog** = together · **wyib** = with yarn in back of work · **wyif** = with yarn in front of work · **WS** = wrong side · **yo(s)** = yarn over(s)

Publisher's Info

Publisher: Lana Grossa GmbH, Gaimersheim, www.lanagrossa.com

Photographer: Herbert Dehn