



www.lanagrossa.com

SHAWL · GOMITOLO DENIM INCA

Design 05 – Filati Gomitolo 05

SHAWL · GOMITOLO DENIM INCA

Design 05 – Filati Gomitolo 05



Size 60 x 200 cm

Materials: 400 g of Lana Grossa **Gomitolo Denim Inca** (80% cotton, 20% polyamide; 740 m/200 g) in Mint/Light Blue/Pink/Red/Wine/Turquoise/Umbra (**col 157**). Size 4 mm needles; size 3.5 mm crochet hook.

Lace patt: Work according to chart 2. Multiple of 10 + 1 + 2 selvage sts (not shown on chart). Numbers at right edge of chart indicate RS rows; on WS rows, purl all sts and yos. Rep rows 1 – 16. Work incs at beg of shawl according to chart 1; work decs at end of shawl according to chart 3.

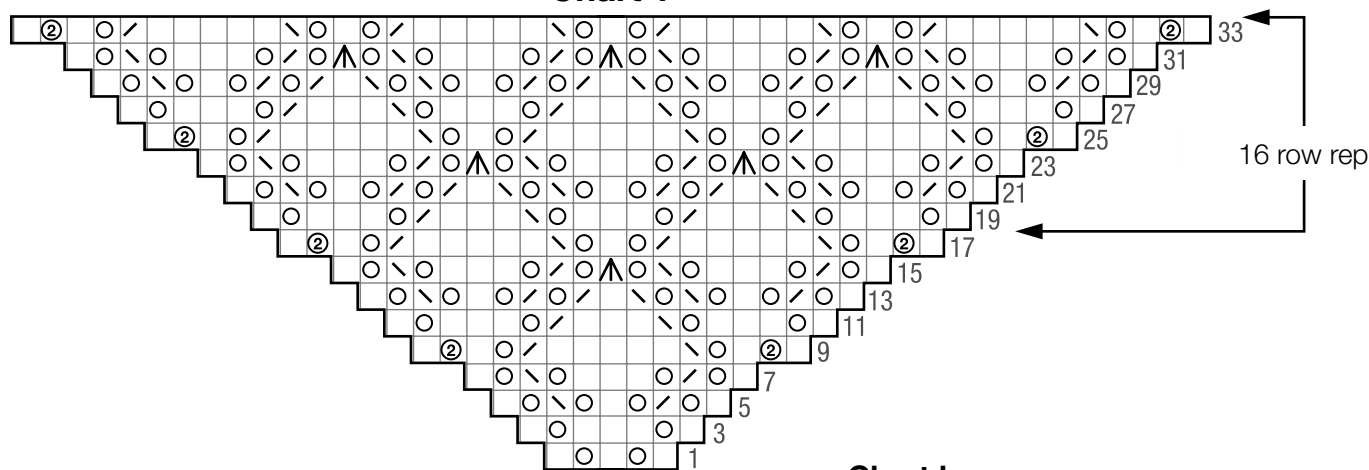
Slip stitch selvage: On RS row: Ktbl first st, sl last st pwise wyib; on WS row: Ptbl first st, sl last st pwise wyif.

Gauge: 20 sts and 30 rows = 10 x 10 cm in lace patt on size 4 mm needles.

Shawl: With size 4 mm needles cast on 5 sts. Next row (WS): Slip st selvage, p3, slip st selvage. Maintaining selvage sts, work rows 1 – 34 of inc chart 1, then rep rows 19 – 34 working incs as established, until there are 133 sts on the needle. Maintaining selvage sts, work even in lace patt according to chart 2 until piece meas approx. 165 cm from cast-on, ending with a chart row 14 (WS). Maintaining selvage sts, rep rows 1 – 16 of dec chart 3, working decs as established, until 5 sts rem. Bind off.

Finishing: Pin piece to measurements and block. With size 3.5 mm hook sc around entire edge of shawl.

Chart 1



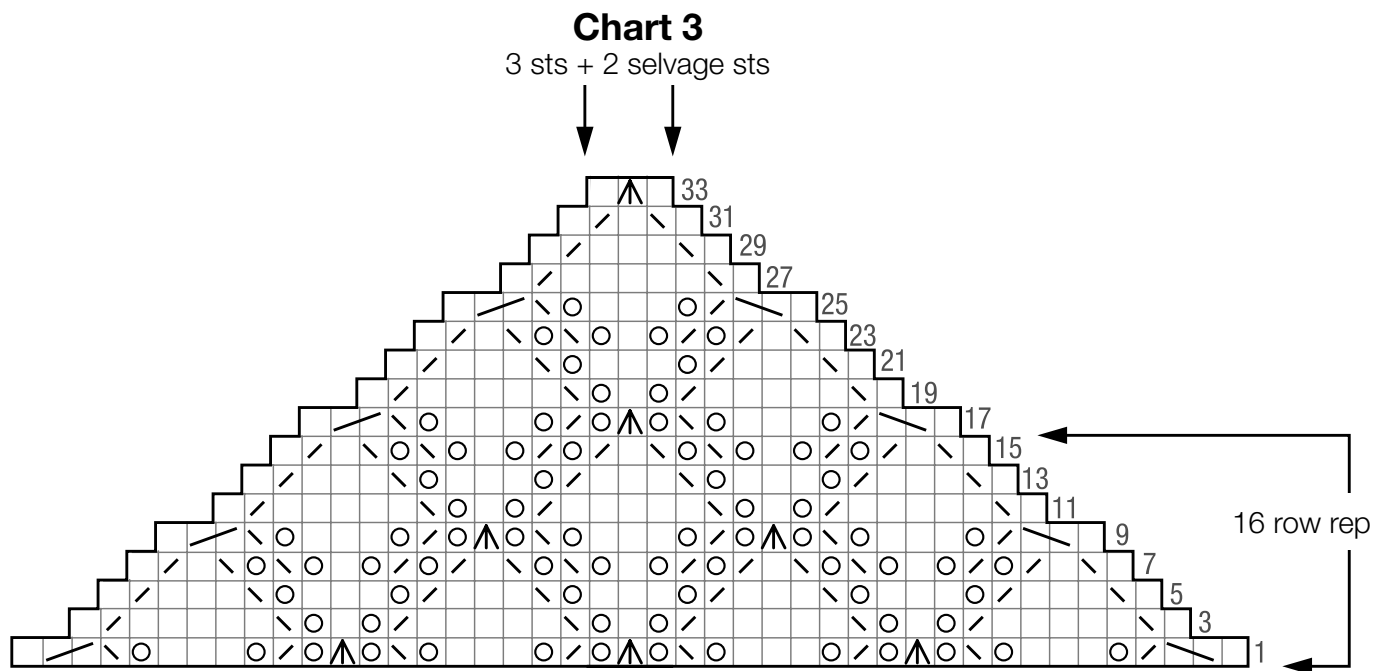
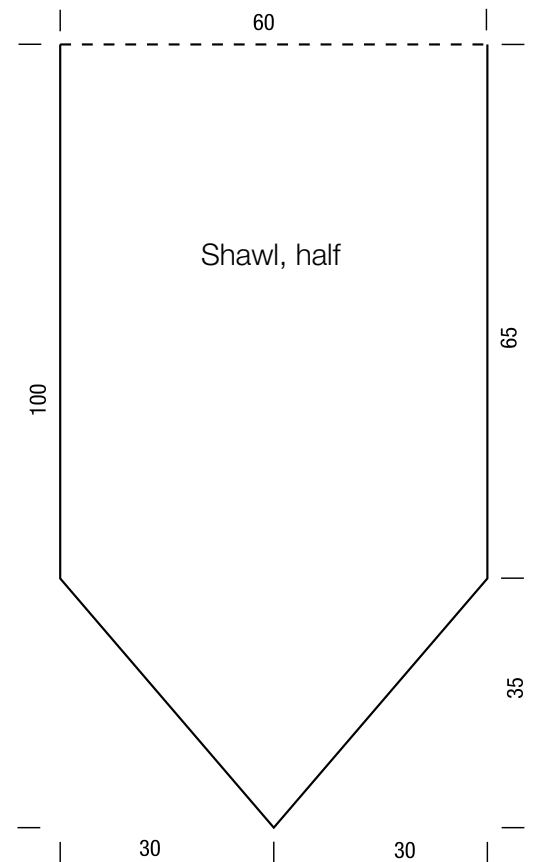
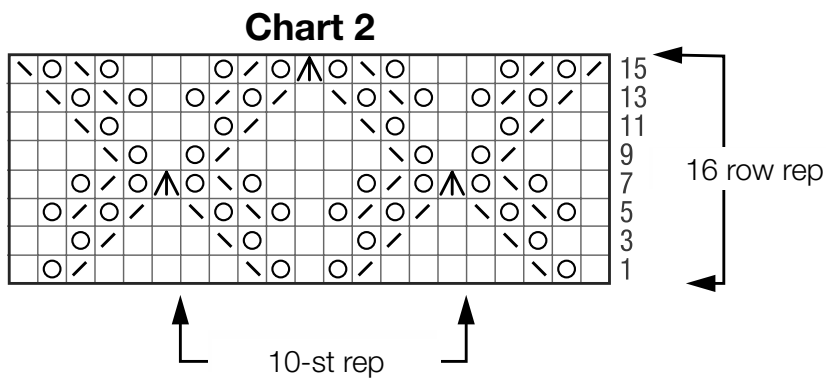
3 sts + 2 selvage sts

Chart key:

- = k1
- ◻ = yo on RS, p on WS
- ◻ = dbl yo on RS, p1f&b on WS
- ◻ = k2tog
- ◻ = skp: sl 1 kwise, k1, pass slipped st over knitted st
- ◻ = sk2p: sl 1 kwise, k2tog, pass slipped st over knitted st
- ◻ = s2kp: sl 2 kwise, k1, pass slipped sts over knitted st
- ◻ = k3tog

SHAWL · GOMITOLO DENIM INCA

Design 05 – Filati Gomitolo 05



Gauge Swatch

Before you begin ...

...make a gauge swatch. Use the recommended needles, yarns and pattern stitch for your gauge swatch. It should measure approx. 12 cm x 12 cm. Cast-on and bind-off rows, as well as selvage stitches should not be included in the measurement. Pin your swatch and block it as you would the finished pieces of the garment. Count stitches and rows over 10 cm. If your gauge swatch is too small, switch to larger needles. If your gauge swatch is too big, switch to smaller needles.



Abbreviations

beg = begin(ning) · **ch** = chain · **cont** = continue · **dec** = decreas(e)(ing) · **inc** = increas(e)(ing) · **k** = knit · **kwise** = as if to knit
meas = measures · **M1L** = lift strand between sts from front to back and knit this strand through the back loop · **M1R** = lift strand between sts from the back and knit this strand through the front loop · **patt** = pattern · **pm** = place marker · **p** = purl
pwise = as if to purl · **rem** = remain(ing) · **rep** = repeat(s) · **rev St st** = reverse stockinette stitch · **rnd(s)** = round(s) · **RS** = right side · **sc** = single crochet · **skp** = slip 1 stitch as if to knit, knit 1 stitch, pass slipped stitch over knitted stitch · **sk2p** = slip 1 stitch as if to knit, knit 2 together, pass slipped stitch over knitted stitch · **s2kp** = slip 2 stitches as if to knit, k 1 stitch, pass slipped stitches over knitted stitch · **sl** = slip · **st(s)** = stitch(es) · **St st** = stockinette stitch · **tbl** = through the back loop · **tog** = together · **wyib** = with yarn in back of work · **wyif** = with yarn in front of work · **WS** = wrong side · **yo(s)** = yarn over(s)

Publisher's Info

Publisher: Lana Grossa GmbH, Gaimersheim, www.lanagrossa.com

Photographer: Herbert Dehn