



www.lanagrossa.com

VEST · GOMITOLO DENIM
Design 06 – Filati Gomitolo 05

VEST · GOMITOLO DENIM

Design 06 – Filati Gomitolo 05



Size 36/38 (40/42, 44)

Instructions are given for first size. Figures in parenthesis refer to larger sizes. When only one figure is given, it applies to all sizes.

Materials: 200 (400, 400) g of Lana Grossa **Gomitolo Denim** (80% cotton, 20% polyamide; 740 m/200 g) in Dark Jeans (col 8). Size 4.5 mm needles; size 3.5 mm crochet hook; two 11 mm snap buttons in black [by PRYM, item 341166].

Openwork patt: Work according to chart. Multiple of 3 + 2 selvage sts (not shown on chart). Numbers at right edge of chart indicate RS rows, numbers at left edge of chart indicate WS rows. Rep rows 1 – 4.

Slip stitch selvage: On RS row: Ktbl first st, sl last st pwise wyib; on WS row: Ptbl first st, sl last st pwise wyif.

Full-fashion decrease: At beg of RS row, slip st selvage, skip; at end of RS row, work to last 3 sts, k2tog, slip st selvage.

Gauge: 16.5 sts and 23 rows = 10 x 10 cm in openwork patt on size 4.5 mm needles.

Back: With size 4.5 mm needles cast on 95 (101, 107) sts. Purl 1 WS row. Next row (RS): Selvage st, work row 1 of openwork patt chart over next 93 (99, 105) sts: Work 3-st patt rep between arrows 30 (32, 34) times, work 3 sts after patt rep; selvage st. Cont in patt as established until piece meas 30 cm from cast-on, ending with a WS row. Shape sleeves: Cont in patt, cast on 9 sts at beg of next 2 rows = 113 (119, 125) sts. Working a slip st selvage at each edge and working increased sts into patt, cont in patt until piece meas 49 (50, 51) cm from cast-on, ending with a WS row. Shape neck and shoulders/

overarms: Next row (RS): Bind off center 39 sts. Working each side separately, bind off 2 sts at each neck edge 1 time, 1 st 1 time. At same time, when piece meas 1 cm from beg of neck shaping, shape shoulders/overarms as foll: At each shoulder edge bind off 12 (13, 14) sts 1 time, 11 (12, 13) sts 2 times. No sts rem.

Left front: With size 4.5 mm needles cast on 41 (44, 47) sts. Purl 1 WS row. Next row (RS): Selvage st, work row 1 of openwork patt chart over next 39 (42, 45) sts: Work 3-st patt rep between arrows 12 (13, 14) times, work 3 sts after patt rep; slip st selvage. Cont in patt as established and shape front slope as foll: Working full-fashion dec, dec 1 st at end of 25th row worked in patt, then every 24th row 2 times, then every 14th row 1 times, then every 12th row 1 time. At same time, when piece meas 30 cm from cast-on, shape sleeve as foll: Cast on 9 sts at beg of next RS row. Working a slip st selvage at sleeve edge and working increased sts into patt, cont in patt until piece meas 50 (51, 52) cm from cast-on, ending with a WS row. Shape shoulder/overarm: At beg of RS rows bind off 12 (13, 14) sts 1 time, 11 (12, 13) sts 2 times. No sts rem.

Right front: Work same as left front, reversing all shaping and patt placement.

Finishing: Pin pieces to measurements and block. Sew shoulder/overarm, side and sleeve seams. **Front and neck-band:** With size 3.5 mm hook, work 15 rows sc along right front, back neck and left front edge. **Bottom edging:** With size 3.5 mm hook, work 1 row sc along bottom edge of left front, back and right front. **Sleeve edging:** With size 3.5 mm hook, work 1 rnd sc around each sleeve edge. Sew snap buttons to front bands.

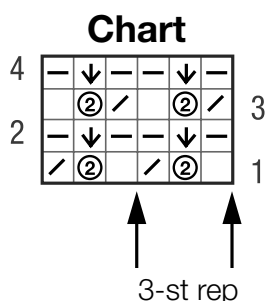
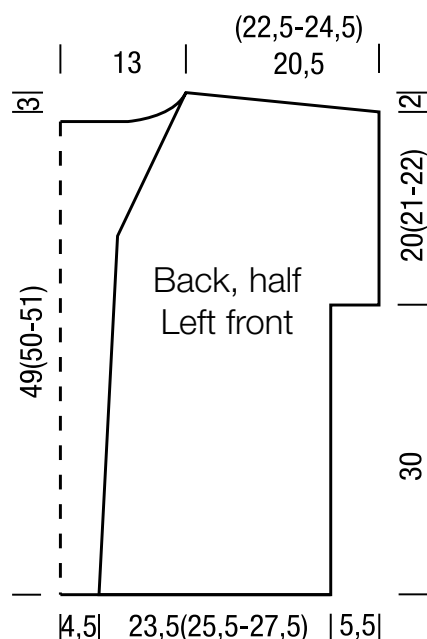


Chart key:

- = k1
- ▢ = p1
- ⊗ = dbl yo
- ▣ = k2tog
- ⌵ = p into first yo, drop 2nd yo



Gauge Swatch

Before you begin ...

...make a gauge swatch. Use the recommended needles, yarns and pattern stitch for your gauge swatch. It should measure approx. 12 cm x 12 cm. Cast-on and bind-off rows, as well as selvage stitches should not be included in the measurement. Pin your swatch and block it as you would the finished pieces of the garment. Count stitches and rows over 10 cm. If your gauge swatch is too small, switch to larger needles. If your gauge swatch is too big, switch to smaller needles.



Abbreviations

beg = begin(ning) · **ch** = chain · **cont** = continue · **dec** = decreas(e)(ing) · **inc** = increas(e)(ing) · **k** = knit · **kwise** = as if to knit
meas = measures · **M1L** = lift strand between sts from front to back and knit this strand through the back loop · **M1R** = lift strand between sts from the back and knit this strand through the front loop · **patt** = pattern · **pm** = place marker · **p** = purl
pwise = as if to purl · **rem** = remain(ing) · **rep** = repeat(s) · **rev St st** = reverse stockinette stitch · **rnd(s)** = round(s) · **RS** = right side · **sc** = single crochet · **skp** = slip 1 stitch as if to knit, knit 1 stitch, pass slipped stitch over knitted stitch · **sk2p** = slip 1 stitch as if to knit, knit 2 together, pass slipped stitch over knitted stitch · **s2kp** = slip 2 stitches as if to knit, k 1 stitch, pass slipped stitches over knitted stitch · **sl** = slip · **st(s)** = stitch(es) · **St st** = stockinette stitch · **tbl** = through the back loop · **tog** = together · **wyib** = with yarn in back of work · **wyif** = with yarn in front of work · **WS** = wrong side · **yo(s)** = yarn over(s)

Publisher's Info

Publisher: Lana Grossa GmbH, Gaimersheim, www.lanagrossa.com

Photographer: Herbert Dehn