



www.lanagrossa.com



CROCHET BAG · SHADES OF COTTON

Design 04 – Shades of Cotton 03

CROCHET BAG · SHADES OF COTTON

Design 04 – Shades of Cotton 03



Size 32 cm wide x 35 cm high

Materials: 200 g of Lana Grossa **Shades of Cotton** (100% cotton; 800 m/200 g) in Medium Grey/Yellow/Turquoise/Dark Grey (**col 118**). Size 3 mm crochet hook.

Gauge: 8 groups of 3 dc and 16 rnds = 10 x 10 cm on size 3 mm hook.

Stitch guide: Chain (ch): Make a slipknot on hook, yo and draw through loop of slipknot, * yo and draw through loop on hook. Rep from *.

Single crochet (sc): Insert hook into work, yo and draw through work only. Yo and draw through both loops on hook.

Half double crochet (hdc): Yo, insert hook into work, yo and draw through work only. Yo and draw through all 3 loops on hook.

Double crochet (dc): Yo, insert hook into work, yo and draw through work only. Yo and draw through first 2 loops only, yo and draw through last 2 loops on hook.

Front: Pulling yarn from outside of ball, crochet one granny square according to chart. Work chart rnds 1 – 5 once, then cont in patt and work incs as established until total of 23 rnds

has been worked from beg. Next rnd: Sc in each dc around, 3 sc into ch-1 sp at each corner. Next rnd: Sc in each sc around, 3 sc in center sc at each corner.

Edging: Row 1: Ch 1 (does not count as sc throughout), 76 sc along edge of square, turn. **Row 2:** Ch 1, sc in next 76 sc, turn. **Rows 3 – 6:** Rep row 2.

Handle: Row 7: Ch 1, sc in next 19 sc, ch 76, sk next 38 sc, sc in next 19 sc, turn. **Row 8:** Ch 1, sc in each sc and ch across = 114 sc, turn. **Rows 9 – 12:** Sc in each sc across, turn. **Row 13:** Ch 1, sc in next 19 sc; turn next 76 sc of handle down so that last row worked and chain made on row 7 meet. Sc in next 76 sc, working through both thicknesses, sc in next 19 sc. Fasten off.

Back: Work same as front. Do not fasten off.

Finishing: With wrong sides tog, join back to front: Sc in corresponding st and/or row of front, ch 1, sc in next st and/or row of back, * ch 1, sc in next available st and/or row of front, ch 1, sc in next available st and/or row of back. Rep from * until pieces are joined. Fasten off. Carefully weave in all ends.

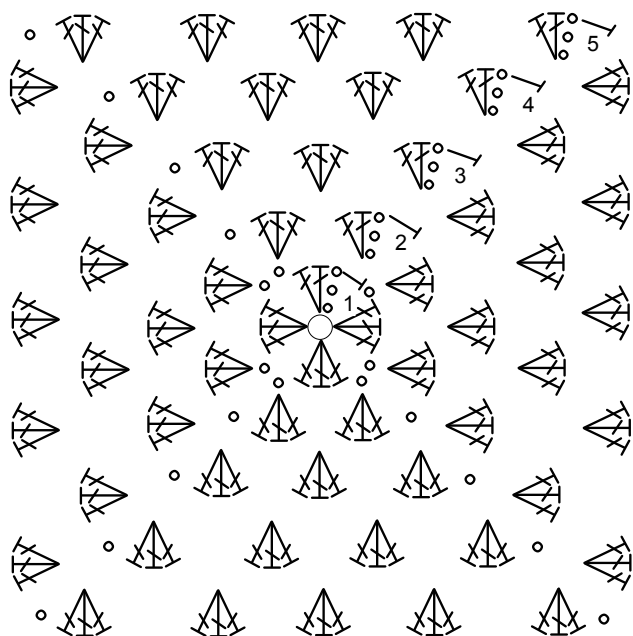





Chart key:

-  = 3 dc into ch-1 sp or between sts on rnd below
-  = hdc
-  = ch

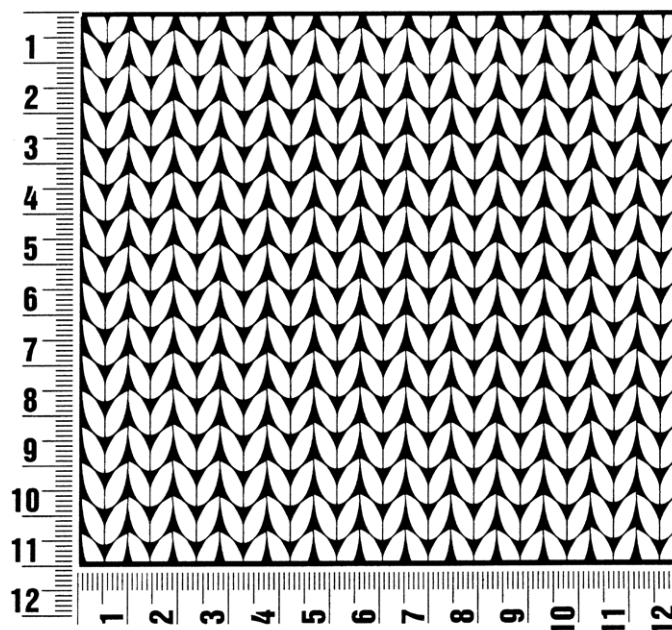
Shades of Cotton 03

www.lanagrossa.com

Gauge Swatch

Before you begin ...

...make a gauge swatch. Use the recommended needles, yarns and pattern stitch for your gauge swatch. It should measure approx. 12 cm x 12 cm. Cast-on and bind-off rows, as well as selvage stitches should not be included in the measurement. Pin your swatch and block it as you would the finished pieces of the garment. Count stitches and rows over 10 cm. If your gauge swatch is too small, switch to larger needles. If your gauge swatch is too big, switch to smaller needles.



Abbreviations

beg = begin(ning) · **ch** = chain · **cont** = continue · **dec** = decreas(e)(ing) · **inc** = increas(e)(ing) · **k** = knit · **kwise** = as if to knit
meas = measures · **M1L** = lift strand between sts from front to back and knit this strand through the back loop · **M1R** = lift strand between sts from the back and knit this strand through the front loop · **patt** = pattern · **pm** = place marker · **p** = purl
pwise = as if to purl · **rem** = remain(ing) · **rep** = repeat(s) · **rev St st** = reverse stockinette stitch · **rnd(s)** = round(s) · **RS** = right side · **sc** = single crochet · **skp** = slip 1 stitch as if to knit, knit 1 stitch, pass slipped stitch over knitted stitch · **sk2p** = slip 1 stitch as if to knit, knit 2 together, pass slipped stitch over knitted stitch · **s2kp** = slip 2 stitches as if to knit, k 1 stitch, pass slipped stitches over knitted stitch · **sl** = slip · **st(s)** = stitch(es) · **St st** = stockinette stitch · **tbl** = through the back loop · **tog** = together · **wyib** = with yarn in back of work · **wyif** = with yarn in front of work · **WS** = wrong side · **yo(s)** = yarn over(s)

Publisher's Info

Publisher: Lana Grossa GmbH, Gaimersheim, www.lanagrossa.com

Photographer: Herbert Dehn