



[www.lanagrossa.com](http://www.lanagrossa.com)

# PULLOVER · PIMA

Design 18 – Filati Classici 18



# PULLOVER · PIMA

## Design 18 – Filati Classici 18



**Size** 36/38 (40/42, 44)

Instructions are given for first size. Figures in parenthesis refer to larger sizes. When only one figure is given, it applies to all sizes.

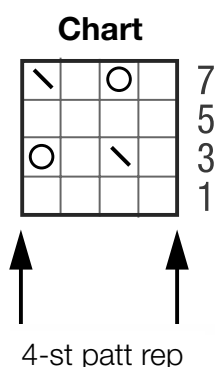
**Materials:** 300 (350, 400) g of Lana Grossa **Pima** (100% Pima cotton; 125 m/50 g) in Pale Yellow (col 12). Size 4.5 mm needles; size 3.5 mm circular needle, 40 cm long; size 3.5 mm crochet hook.

**Rib patt:** P2, k2.

**Eyelet patt:** Multiple of 4. Work according to chart. Numbers at right edge of chart indicate RS rows; on WS rows purl all sts and yos. Rep rows 1 – 8.

**Gauge:** 18 sts and 26 rows = 10 x 10 cm in eyelet patt on size 4.5 mm needles.

**Back:** With size 4.5 mm needles cast on 80 (88, 96) sts. Next row (WS): Selvage st, \* k2, p2; rep from \* to last 3 sts, k2, selvage st. Cont in rib patt as established until piece meas 7 cm from cast-on, ending with a WS row. Next row (RS): Selvage st, work in rib patt as established and at same time, increase 10 sts evenly across center 42 (50, 58) sts, selvage st = 90 (98, 106) sts. Next row (RS): Selvage st, work in rib patt as established over next 18 sts, work row 3 of eyelet patt chart over next 42 (50, 58) sts, work in rib patt as established over next 18 sts, selvage st. Cont in patt as established until piece meas 36 cm from cast-on, ending with a WS row. Shape armholes: Bind off 4 sts at beg of next 2 rows, 3 sts at beg of next 2 rows, 2 sts at beg of next 2 rows, 1 st at beg of next 6 rows = 66 (74, 82) sts. Work even until piece meas 57 (58, 59) cm from cast-on, ending with a WS row. Bind off all sts.



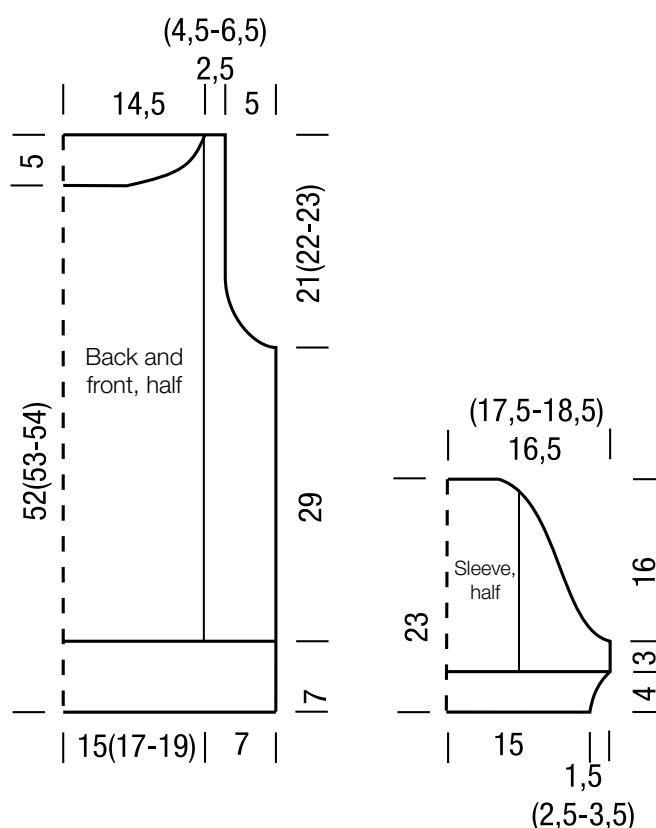
**Chart key:**

- = k1
- = yo
- = skp: sl 1 kwise, k1, pass slipped st over knitted st

**Front:** Work same as back until piece meas 52 (53, 54) cm from cast-on, ending with a WS row. Shape neck: Next row (RS): Bind off center 18 sts. Working each side separately, bind off 6 sts at each neck edge 1 time, 4 sts 1 time, 3 sts 1 time, 2 sts 1 time, 1 st 2 times, and when same length as back to shoulders, bind off rem 7 (11, 15) sts for each shoulder.

**Sleeves:** With size 4.5 mm needles cast on 56 sts. Next row (WS): Selvage st, \* k2, p2; rep from \* to last 3 sts, k2, selvage st. Cont in rib patt as established until piece meas 4 cm from cast-on, ending with a WS row. Next row (RS): Selvage st, work in rib patt as established and at same time, increase 6 (10, 14) sts evenly across center 18 sts, selvage st = 62 (66, 70) sts. Next row (RS): Selvage st, work in rib patt as established over next 18 sts, work row 3 of eyelet patt chart over next 24 (28, 32) sts, work in rib patt as established over next 18 sts, selvage st. Cont in patt as established until piece meas 7 cm from cast-on, ending with a WS row. Shape sleeve cap: Bind off 2 sts at beg of next 2 (4, 4) rows, 1 st at beg of next 36 (32, 30) rows, 2 sts at beg of next 4 (6, 6) rows, 0 (0, 3) sts at beg of next 0 (0, 2) rows. Bind off rem 14 sts.

**Finishing:** Pin pieces to measurements and block, omitting rib patt. Sew shoulder seams. **Neck edging:** With size 3.5 mm crochet hook, sc around neck edge. With size 3.5 mm circular needle, pick up and k 108 sts evenly in sc rnd. Place beg of rnd marker and join for working in rnds. Knit 4 rnds. Loosely bind off all sts. Sew in sleeves. Sew side and sleeve seams.



## Gauge Swatch

### Before you begin ...

...make a gauge swatch. Use the recommended needles, yarns and pattern stitch for your gauge swatch. It should measure approx. 12 cm x 12 cm. Cast-on and bind-off rows, as well as selvage stitches should not be included in the measurement. Pin your swatch and block it as you would the finished pieces of the garment. Count stitches and rows over 10 cm. If your gauge swatch is too small, switch to larger needles. If your gauge swatch is too big, switch to smaller needles.



## Abbreviations

**beg** = begin(ning) · **ch** = chain · **cont** = continue · **dec** = decreas(e)(ing) · **inc** = increas(e)(ing) · **k** = knit · **kwise** = as if to knit  
**meas** = measures · **M1L** = lift strand between sts from front to back and knit this strand through the back loop · **M1R** = lift strand between sts from the back and knit this strand through the front loop · **patt** = pattern · **pm** = place marker · **p** = purl  
**pwise** = as if to purl · **rem** = remain(ing) · **rep** = repeat(s) · **rev St st** = reverse stockinette stitch · **rnd(s)** = round(s) · **RS** = right side · **sc** = single crochet · **skp** = slip 1 stitch as if to knit, knit 1 stitch, pass slipped stitch over knitted stitch · **sk2p** = slip 1 stitch as if to knit, knit 2 together, pass slipped stitch over knitted stitch · **s2kp** = slip 2 stitches as if to knit, k 1 stitch, pass slipped stitches over knitted stitch · **sl** = slip · **st(s)** = stitch(es) · **St st** = stockinette stitch · **tbl** = through the back loop · **tog** = together · **wyib** = with yarn in back of work · **wyif** = with yarn in front of work · **WS** = wrong side · **yo(s)** = yarn over(s)

### Publisher's Info

**Publisher:** Lana Grossa GmbH, Gaimersheim, [www.lanagrossa.com](http://www.lanagrossa.com)  
**Photographer:** Nicolas Olonetzky c/o Bascha Kicki Fotografen, [www.bascha-photographers.de](http://www.bascha-photographers.de)