



www.lanagrossa.com

JACKET · ABOUT BERLIN FUNKY

Design 01 – About Berlin Special 03

JACKET • ABOUT BERLIN FUNKY

Design 01 – About Berlin Special 03



Size One size

Materials: 200 g of Lana Grossa **About Berlin Funky** (83% cotton, 17% polyamide; 115 m/50 g) in Beige (**col 3**) and 150 g in Cream (**col 2**). Size 6 mm needles; two size 6 mm double-pointed needles [dnp].

Elongated stitch patt: Row 1 (RS) in Beige: Knit, wrapping yarn twice around needle for every st. Row 2 (WS) in Beige: Ptbl all sts, dropping extra wraps. Row 3 (RS) in Cream: Ktbl all sts. Row 4 (WS) in Cream: Purl all sts. Rep rows 1 – 4 for elongated st patt.

I-cord bind-off: * K1, k2tog tbl, pass 2 sts back to left needle; rep from * until 2 sts rem. K2tog tbl last 2 sts.

Gauge: 14 sts and 12 rows = 10 x 10 cm in elongated st patt on size 6 mm needles.

Back: With size 6 mm needles and Cream cast on 99 sts. Next row (WS): * P1, k1; rep from *, end p1. Work rows 1 – 4 of elongated st patt 5 times and piece meas approx. 17 cm from cast-on. Place marker at each edge to indicate top of side vents. Work rows 1 – 4 of elongated st patt 9 times and piece meas approx. 47 cm from cast-on. Place markers at each edge to indicate beg of armholes. Work rows 1 – 4 of elongated st patt 7 times and piece meas approx. 70 cm from cast-on. Next row (RS): Using the I-cord technique, bind off first 36 sts for right shoulder; bind off next 27 sts as you would normally; using the I-cord technique, bind off rem 36 sts for left shoulder.

Right front: Note that fronts are 7 cm shorter than back. With size 6 mm needles and Cream cast on 57 sts. Next row (WS): * P1, k1; rep from *, end p1. Work rows 1 – 4 of elongated st patt 3 times and piece meas approx. 10 cm from cast-on. Place marker at left edge to indicate top of side vent. Work rows 1 – 4 of elongated st patt 3 times, then work rows 1 and

2 once more; piece meas approx. 20 cm from cast-on. Shape neck: Next RS (dec) row: Work patt row 3 over first 9 sts, k2tog, patt to end = 56 sts. Cont in patt, rep dec row on every foll patt row 3 eleven more times = 45 sts. At same time, when piece meas 40 cm from cast-on, place armhole marker at left edge. Work even until 4-row rep has been worked a total of 18 times from cast-on, then work patt rows 1 – 3 once more; piece meas approx. 63 cm from cast-on. Next row (WS): Using the I-cord technique, bind off first 36 sts for shoulder, cut yarn and draw through last st on needle = 9 sts rem for collar. With RS facing, rejoin yarn and work 8 rows of elongated st patt across collar sts, then bind off all sts.

Left front: Work same as right front, reversing all shaping and working 4-row rep a total of 19 times from cast-on. Next row (RS): Using the I-cord technique, bind off first 36 sts for shoulder, work patt row 1 to end of row = 9 sts rem for collar. Work patt rows 2 – 4 across collar sts, then work patt rows 1 – 4 once more. Bind off all sts.

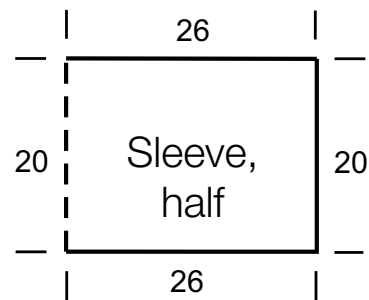
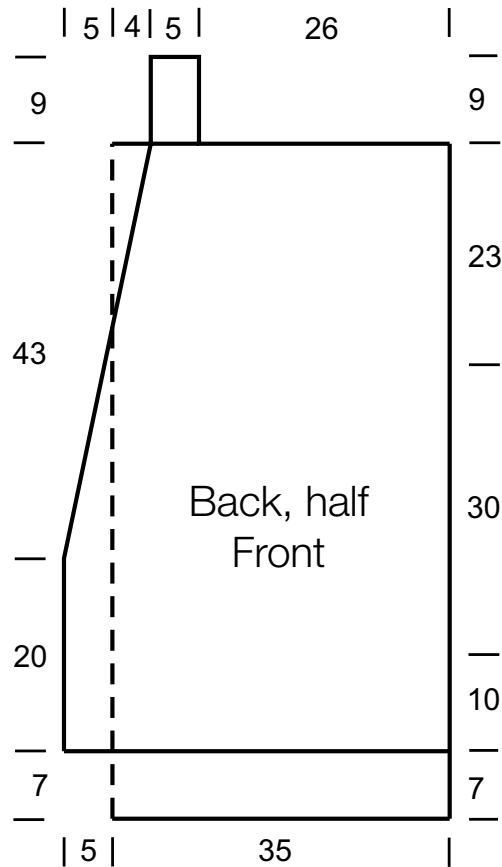
Sleeves: With size 6 mm needles and Cream cast on 75 sts. Next row (WS): * P1, k1; rep from *, end p1. Work rows 1 – 4 of elongated st patt 6 times and piece meas approx. 20 cm from cast-on. Using the I-cord technique, bind off all sts.

Belt: With dnp and Beige, cast on 4 sts and work as foll: * Next row (RS): With 2nd dnp, k4, do not turn. Sl sts back to beg of needle to work next row from RS, pulling yarn tightly from end of row; rep from * until I-cord measures 150 cm, working 4 rows Beige, 4 rows Cream alternately throughout. Bind off.

Finishing: Sew shoulder seams. Sew collar tog. Sew collar edge to back neck. Sew on sleeves between markers. Sew side and sleeve seams, leaving side seams below markers open for vents. Thread belt through elongated sts at desired height; knot belt to close jacket.

JACKET · ABOUT BERLIN FUNKY

Design 01 – About Berlin Special 03



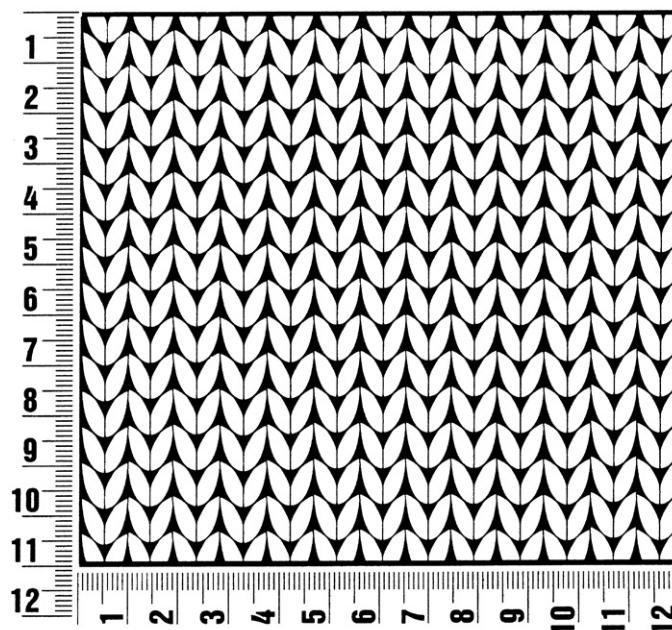
About Berlin Special 03

www.lanagrossa.com

Gauge Swatch

Before you begin ...

...make a gauge swatch. Use the recommended needles, yarns and pattern stitch for your gauge swatch. It should measure approx. 12 cm x 12 cm. Cast-on and bind-off rows, as well as selvage stitches should not be included in the measurement. Pin your swatch and block it as you would the finished pieces of the garment. Count stitches and rows over 10 cm. If your gauge swatch is too small, switch to larger needles. If your gauge swatch is too big, switch to smaller needles.



Abbreviations

beg = begin(ning) · **ch** = chain · **cont** = continue · **dec** = decreas(e)(ing) · **inc** = increas(e)(ing) · **k** = knit · **kwise** = as if to knit
meas = measures · **M1L** = lift strand between sts from front to back and knit this strand through the back loop · **M1R** = lift strand between sts from the back and knit this strand through the front loop · **patt** = pattern · **pm** = place marker · **p** = purl
pwise = as if to purl · **rem** = remain(ing) · **rep** = repeat(s) · **rev St st** = reverse stockinette stitch · **rnd(s)** = round(s) · **RS** = right side · **sc** = single crochet · **skp** = slip 1 stitch as if to knit, knit 1 stitch, pass slipped stitch over knitted stitch · **sk2p** = slip 1 stitch as if to knit, knit 2 together, pass slipped stitch over knitted stitch · **s2kp** = slip 2 stitches as if to knit, k 1 stitch, pass slipped stitches over knitted stitch · **sl** = slip · **st(s)** = stitch(es) · **St st** = stockinette stitch · **tbl** = through the back loop · **tog** = together · **wyib** = with yarn in back of work · **wyif** = with yarn in front of work · **WS** = wrong side · **yo(s)** = yarn over(s)

Publisher's Info

Publisher: Lana Grossa GmbH, Gaimersheim, www.lanagrossa.com

Photographer: Sabrina Theissen