



www.lanagrossa.com

PULLOVER · CERTO PRINT

Design 02 – About Berlin Special 03

PULLOVER · CERTO PRINT

Design 02 – About Berlin Special 03



Size 36/38 (40/42, 44/46)

Instructions are given for first size. Figures in parenthesis refer to larger sizes. When only one figure is given, it applies to all sizes.

Materials: 500 g of Lana Grossa **Certo Print** (100% GOTS cotton; 115 m/50 g) in Grey Green/Jade/Grey Blue/Natural (col 106). Size 5 and 7 mm needles; size 5 mm circular needle, 40 cm long; cable needle [cn].

Twisted rib in rows: On RS row, k1tbl, p1; on WS row, k1tbl, p1tbl.

Twisted rib in rnds: Rnd 1: * K1tbl, p1tbl; rep from * around. Rnd 2: * K1, p1; rep from * around. Rep rnds 1 and 2.

St st: K on RS, p on WS.

Rev St st: P on RS, k on WS.

Three-stitch selvage: On RS row, sl 1 pwise wyif, k1, p1, work to last 3 sts, p1, k1, sl 1 pwise wyif. On WS row, k1, sl 1 pwise wyif, k1, work to last 3 sts, k1, sl 1 pwise wyif, k1.

V-motif, back and front: Work according to chart. Numbers at right edge of chart indicate RS rows; on WS rows, work sts according to chart key. Work rows 1 – 20 once, then cont working on RS rows 1 less st in St st before cable crossing at beg of row, 1 less st in St st after cable crossing at end of row and 2 additional sts in rev St st between cable crossings.

V-motif, sleeves: Work according to chart. Numbers at right edge of chart indicate RS rows; on WS rows, work sts according to chart key.

Full-fashion decrease: At beg of RS row, k2, sl 1 pwise, k1, pass slipped st over knitted st; at end of RS row, work to last 4 sts, k2tog, k2.

Gauge: 17 sts and 24 rows = 10 x 10 cm in St st on size 7 mm needles.

Back: With size 5 mm needles cast on 85 (93, 101) sts. Next row (WS): * K1tbl, p1tbl; rep from *, end k1tbl. Cont in twisted rib as established until piece meas 6 cm from cast-on, ending

with a WS row. Change to size 7 mm needles. Next row (RS): Three-st selvage, work 39 (43, 47) sts in St st, M1R, work 40 (44, 48) sts in St st, three-st selvage st = 86 (94, 102) sts. Maintaining three-st selvage at each edge, cont in St st and shape sides as foll: Inc 1 st at each end of 5th row worked in St st, then every 6th row 6 times, working incs as foll: M1R, 4 sts in from each edge = 100 (108, 116) sts. At same time, begin V-motif on 15th row from end of twisted rib as foll: Patt to center 24 sts, work row 1 of chart over next 24 sts, patt to end. Cont in patt until piece meas 25 cm from cast-on, ending with a WS row. Shape armholes: Working full-fashion dec, dec 1 st at each end of next 7 RS rows = 86 (94, 102) sts. Work even until piece meas 44 (45, 46) cm from cast-on, ending with a WS row. Shape shoulders: At each shoulder edge bind off 6 (7, 8) sts 4 times. Bind off rem 38 sts.

Front: Work same as back until piece meas 38 cm from cast-on, ending with a WS row. Shape neck: Next row (RS): Bind off center 12 sts. Working each side separately, bind off 3 sts at each neck edge 1 time = 34 (38, 42) sts rem for each side. Working full-fashion dec, dec 1 st at each neck edge every RS row 10 times and when same length as back to shoulders, shape shoulders same as for back.

Sleeves: With size 5 mm needles cast on 55 sts. Next row (WS): * K1tbl, p1tbl; rep from *, end k1tbl. Cont in twisted rib as established until piece meas 7 cm from cast-on, ending with a WS row. Change to size 7 mm needles. Next row (RS): Three-st selvage, work 17 sts in St st, M1R, work 32 sts in St st, three-st selvage st = 56 sts. Work rows 1 – 32 of sleeves chart = 64 sts. Work rows 33 – 54 of sleeves chart, inc 1 st as established every 4th row 0 (2, 4) more times = 64 (68, 72) sts. Rep chart rows 53 and 54 until piece meas 46 (45, 44) cm from cast-on, ending with a WS row. Shape sleeve cap: Working full-fashion dec, dec 1 st at each end of next 7 RS rows = 50 (54, 58) sts. Work 1 WS row. Bind off 6 sts at beg of next 6 rows (7 sts at beg of next 4 rows, 6 sts at beg of next 2 rows / 7 sts at beg of next 4 rows, 8 sts at beg of next 2 rows). Bind off rem 14 sts.

Finishing: Sew shoulder seams. **Neckband:** With size 5 mm circular needle, pick up and k 94 (98, 102) sts evenly around neck edge. Place beg of rnd marker and join for working in rnds. Work twisted rib in rnds for 9 rnds. Bind off all sts in rib. Sew in sleeves. Sew side and sleeve seams.

PULLOVER · CERTO PRINT

Design 02 – About Berlin Special 03

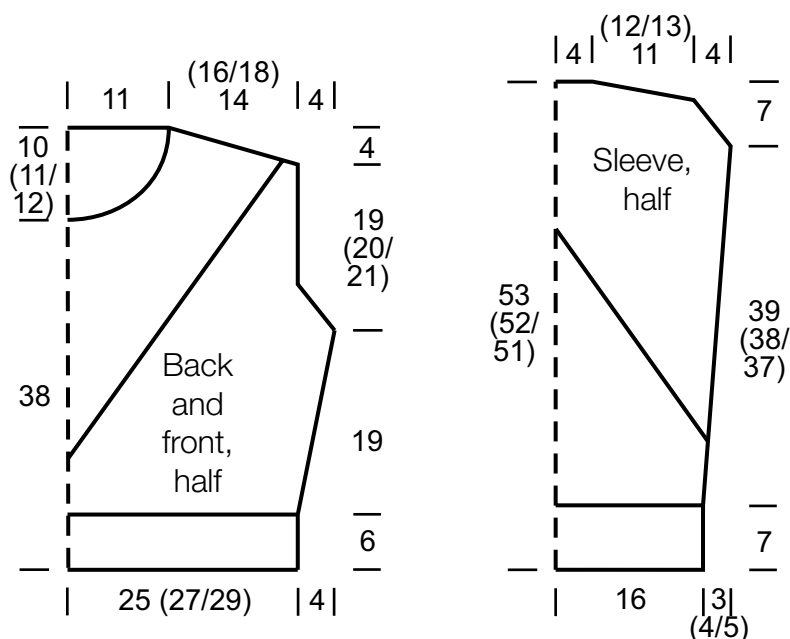











Chart key:

-  = k on RS, p on WS
-  = p on RS, k on WS
-  = on RS, sl 1 st to cn and hold in back of work, sl 1 kwise, then k1 from cn; on WS, p2
-  = on RS, sl 1 st to cn and hold in back of work, sl 1 kwise, then p1 from cn; on WS, k1, p1
-  = on RS, sl 1 st to cn and hold in front of work, p1, then sl 1 kwise from cn; on WS, p1, k1
-  = on RS, sl 1 st to cn and hold in back of work, sl 1 kwise, then k1 from cn; on WS, p2
-  = on RS, sl 1 st to cn and hold in front of work, k1, then sl 1 kwise from cn; on WS, p2
-  = sl 1 pwise wyif
-  = M1R

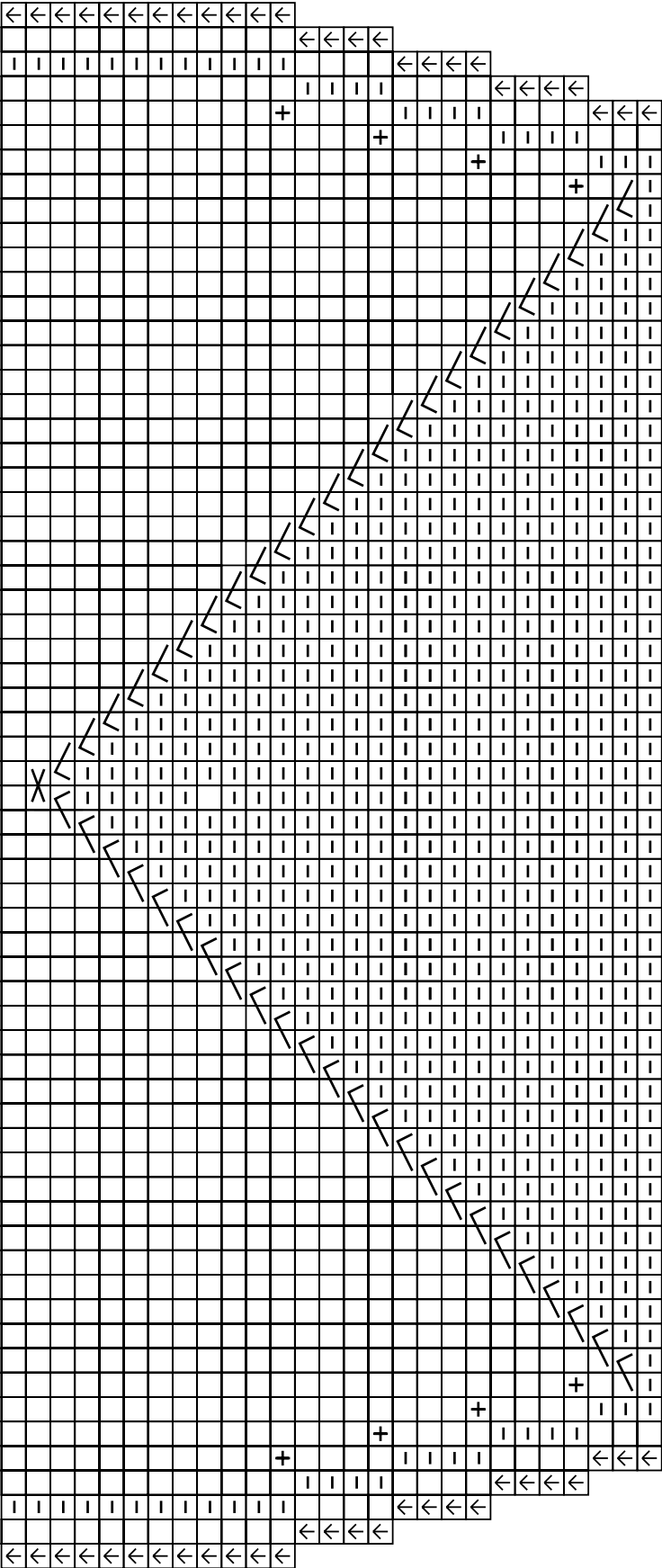
PULLOVER · CERTO PRINT

Design 02 – About Berlin Special 03



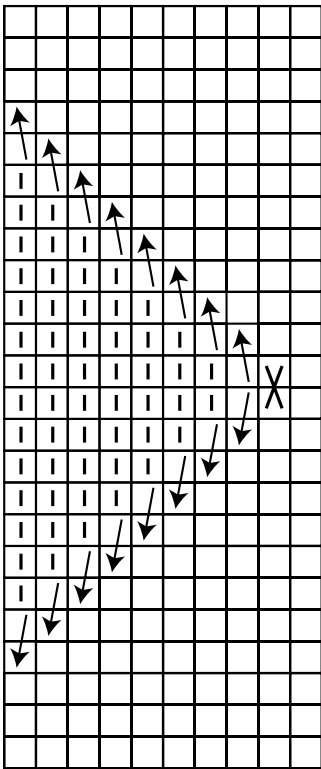
V-motif, sleeves

53 51 49 47 45 43 41 39 37 35 33 31 29 27 25 23 21 19 17 15 13 11 9 7 5 3 1



V-motif, back and front

19 17 15 13 11 9 7 5 3 1



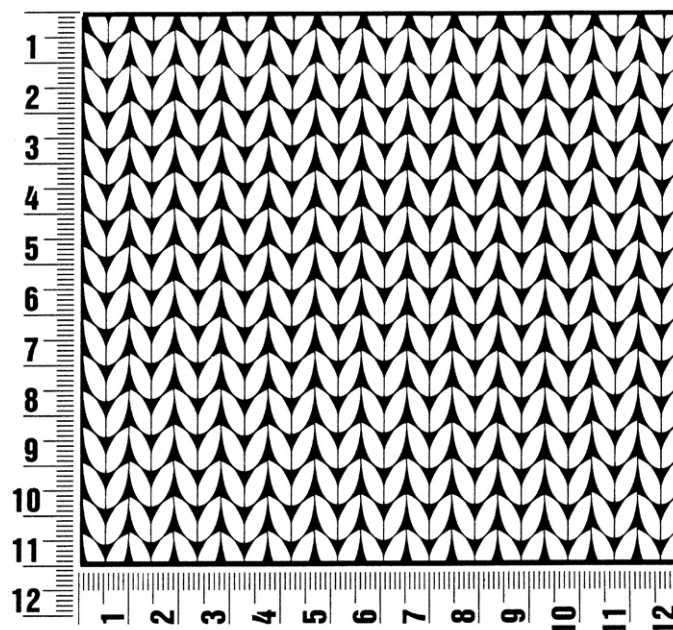
About Berlin Special 03

www.lanagrossa.com

Gauge Swatch

Before you begin ...

...make a gauge swatch. Use the recommended needles, yarns and pattern stitch for your gauge swatch. It should measure approx. 12 cm x 12 cm. Cast-on and bind-off rows, as well as selvage stitches should not be included in the measurement. Pin your swatch and block it as you would the finished pieces of the garment. Count stitches and rows over 10 cm. If your gauge swatch is too small, switch to larger needles. If your gauge swatch is too big, switch to smaller needles.



Abbreviations

beg = begin(ning) · **ch** = chain · **cont** = continue · **dec** = decreas(e)(ing) · **inc** = increas(e)(ing) · **k** = knit · **kwise** = as if to knit
meas = measures · **M1L** = lift strand between sts from front to back and knit this strand through the back loop · **M1R** = lift strand between sts from the back and knit this strand through the front loop · **patt** = pattern · **pm** = place marker · **p** = purl
pwise = as if to purl · **rem** = remain(ing) · **rep** = repeat(s) · **rev St st** = reverse stockinette stitch · **rnd(s)** = round(s) · **RS** = right side · **sc** = single crochet · **skp** = slip 1 stitch as if to knit, knit 1 stitch, pass slipped stitch over knitted stitch · **sk2p** = slip 1 stitch as if to knit, knit 2 together, pass slipped stitch over knitted stitch · **s2kp** = slip 2 stitches as if to knit, k 1 stitch, pass slipped stitches over knitted stitch · **sl** = slip · **st(s)** = stitch(es) · **St st** = stockinette stitch · **tbl** = through the back loop · **tog** = together · **wyib** = with yarn in back of work · **wyif** = with yarn in front of work · **WS** = wrong side · **yo(s)** = yarn over(s)

Publisher's Info

Publisher: Lana Grossa GmbH, Gaimersheim, www.lanagrossa.com

Photographer: Sabrina Theissen