



[www.lanagrossa.com](http://www.lanagrossa.com)

# **JACKET · ABOUT BERLIN BULKY**

Design 03 – About Berlin Special 03



# JACKET • ABOUT BERLIN BULKY

## Design 03 – About Berlin Special 03



**Size** 36 – 40 (42 – 44)

Instructions are given for smaller size. Figure in parenthesis refers to larger size. When only one figure is given, it applies to both sizes.

**Materials:** 750 (800) g of Lana Grossa **About Berlin Bulky** (50% cotton, 50% Micromodal; 47 m/50 g) in Ink (**col 4**). Size 6 and 9 mm needles.

**Twisted rib:** On RS row, k1tbl, p1; on WS row, k1, p1tbl.

**Three-stitch selvage:** On RS row, k1, sl 1 pwise wyib, p1, work to last 3 sts, p1, sl 1 pwise wyib, k1. On WS row, sl 1 pwise wyif, p1, k1, work to last 3 sts, k1, p1, sl 1 pwise wyif.

**Blackberry stitch:** Work according to chart. Numbers at right edge of chart indicate RS rows, numbers at left edge of chart indicate WS rows. Rep rows 1 – 4.

**Gauge:** 12 sts and 14 rows = 10 x 10 cm in blackberry st on size 9 mm needles.

**Back:** With size 6 mm needles cast on 63 (71) sts. Next row (WS): Three-st selvage, \* p1tbl, k1; rep from \* to last 4 sts, p1tbl, three-st selvage. Maintaining selvage sts, cont in twisted rib as established until piece meas 6 cm from cast-on, increasing 1 st at center of last WS row = 64 (72) sts. Change to size 9 mm needles. Work blackberry st according to chart until piece meas 28 cm from cast-on, ending with a WS row. Shape underarms: Next RS (inc) row: Three-st selvage, M1R, patt to last 3 sts, M1R, three-st selvage = 66 (74) sts. Next WS (inc) row: Three-st selvage, p1, M1R, patt to last 4 sts, p1, M1R, three-st selvage = 68 (76) sts. Next RS (inc) row: Three-st selvage, M1R, p1, k1, patt to last 5 sts, k1, p1, M1R, three-st selvage = 70 (78) sts. Next WS (inc) row: Three-st selvage, M1R, p1, k1, p1, patt to last 6 sts, p1, k1, p1, M1R, three-st selvage = 72 (80) sts. Next RS (inc) row: Three-st selvage, M1R, [p1, k1] 2 times, patt to last 7 sts, [k1, p1] 2 times, M1R, three-st selvage = 74 (82) sts. Next row (WS): Three-st selvage, work next 5 sts as they appear, patt to last 8 sts, work next 5 sts as they appear, three-st selvage. Cont in patt as set by last row until piece meas 50 (51.5) cm from cast-on, ending with a WS row. Shape shoulders: At each shoulder edge bind off 7 sts 2 times = 46 (54) sts. Next row (RS): Bind off 6 sts, patt over 9 (13) sts and turn, leaving rem sts on hold. **Right back:** Next row (WS): Bind off 2 sts, patt to end. Next row (RS): Bind off rem 7 (11) sts. **Left back:** With RS facing, rejoin yarn to 31 (35) held sts. Next row (RS): Bind off 16 sts, patt to end. Complete as given for right back, reversing shaping.

**Left front:** With size 6 mm needles cast on 31 (35) sts. Next row (WS): Three-st selvage, \* p1tbl, k1; rep from \* to last 4 sts, p1tbl, three-st selvage. Maintaining selvage sts, cont in twisted rib as established until piece meas 6 cm from cast-on, increasing 1 st at beg of last WS row = 32 (36) sts. Change to size 9 mm needles. Work blackberry st according to chart until piece meas 28 cm from cast-on, ending with a RS row. Shape neck: Next row (WS): Bind off 8 sts, patt to end = 24 (28) sts. Cont in patt and at same time, beg on next RS row, work incs for underarm shaping at right edge same as for back = 29 (33) sts. Next row (WS): Three-st selvage, patt to last 8 sts, work next 5 sts as they appear, three-st selvage. Cont in patt as set by last row until piece meas 50 (51.5) cm from cast-on, ending with a WS row. Shape shoulder: Next row (RS): Bind off 7 sts, patt to end. Next row (WS): Work even in patt. Next row (RS): Bind off 7 sts, patt to last 5 sts, p2tog, three-st selvage. Next row (WS): Work even in patt. Next row (RS): Bind off 6 sts, patt to last 5 sts, p2tog, three-st selvage. Next row (WS): Work even in patt. Next row (RS): Bind off rem 7 (11) sts.

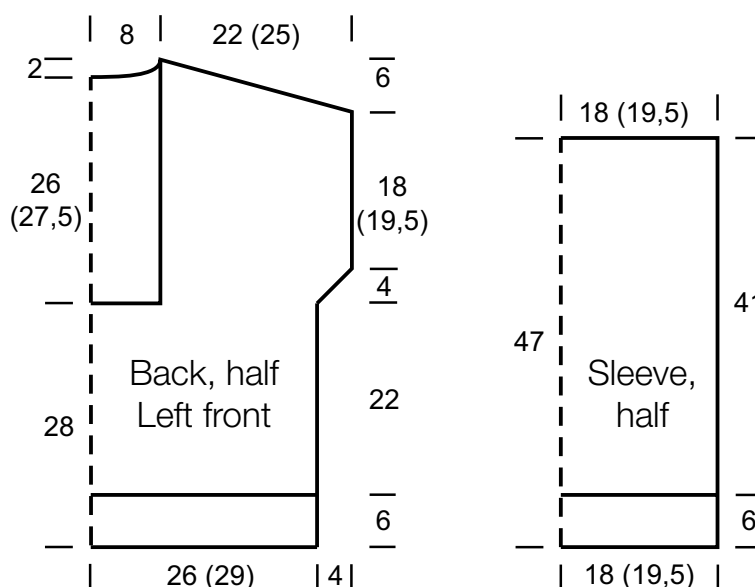
**Right front:** Work same as left front, reversing all shaping and patt placement.

**Sleeves:** With size 6 mm needles cast on 43 (47) sts. Next row (WS): Three-st selvage, \* k1, p1tbl; rep from \* to last 4 sts, k1, three-st selvage. Maintaining selvage sts, cont in twisted rib as established until piece meas 6 cm from cast-on, increasing 1 st at beg of last WS row = 44 (48) sts. Change to size 9 mm needles. Work blackberry st according to chart until piece meas 47 cm from cast-on. Bind off all sts.

**Finishing:** Pin pieces to measurements and block. Sew shoulder seams. **Neckband:** With size 6 mm needles, pick up and k 129 (133) sts evenly along right front, back and left front neck edge. Note: Pick up sts 1 st in from edge. Next row (WS): \* K1, p1tbl; rep from \*, end k1. Cont in twisted rib as established until band meas 8 cm from pick-up row. Loosely bind off all sts. Sew short edges of neckband to neck bind-off edge at left and right front. Sew on sleeves Sew side and sleeve seams.

# JACKET · ABOUT BERLIN BULKY

## Design 03 – About Berlin Special 03



### Chart

4	V	-	I	I	◇	3	◇	3	◇	3	◇	3	I	I	-	V	
	I	^	-	-	-	-	-	-	-	-	-	-	-	-	^	I	3
2	V	-	I	I	3	◇	3	◇	3	◇	3	◇	I	I	-	V	
	I	^	-	-	-	-	-	-	-	-	-	-	-	-	^	I	1
	three-st				4-st rep								three-st				
	selvage												selvage				

### Chart key:

I = k1

- = p1

^ = sl 1 pwise wyib

V = sl 1 pwise wyif

◇ = p3tog

3 = (k1f&b, k1) in next st = 3 sts

□ = represents "no stitch" (included to keep st count correct)

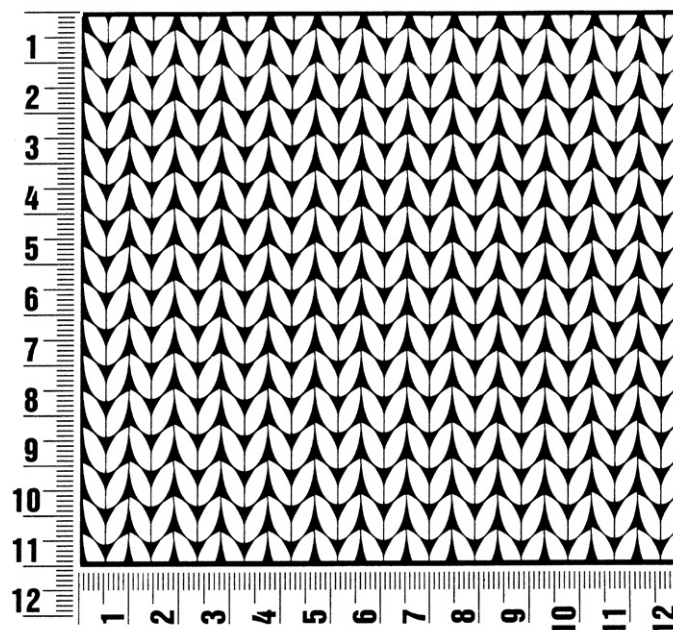
# About Berlin Special 03

www.lanagrossa.com

## Gauge Swatch

### Before you begin ...

...make a gauge swatch. Use the recommended needles, yarns and pattern stitch for your gauge swatch. It should measure approx. 12 cm x 12 cm. Cast-on and bind-off rows, as well as selvage stitches should not be included in the measurement. Pin your swatch and block it as you would the finished pieces of the garment. Count stitches and rows over 10 cm. If your gauge swatch is too small, switch to larger needles. If your gauge swatch is too big, switch to smaller needles.



## Abbreviations

**beg** = begin(ning) · **ch** = chain · **cont** = continue · **dec** = decreas(e)(ing) · **inc** = increas(e)(ing) · **k** = knit · **kwise** = as if to knit  
**meas** = measures · **M1L** = lift strand between sts from front to back and knit this strand through the back loop · **M1R** = lift strand between sts from the back and knit this strand through the front loop · **patt** = pattern · **pm** = place marker · **p** = purl  
**pwise** = as if to purl · **rem** = remain(ing) · **rep** = repeat(s) · **rev St st** = reverse stockinette stitch · **rnd(s)** = round(s) · **RS** = right side · **sc** = single crochet · **skp** = slip 1 stitch as if to knit, knit 1 stitch, pass slipped stitch over knitted stitch · **sk2p** = slip 1 stitch as if to knit, knit 2 together, pass slipped stitch over knitted stitch · **s2kp** = slip 2 stitches as if to knit, k 1 stitch, pass slipped stitches over knitted stitch · **sl** = slip · **st(s)** = stitch(es) · **St st** = stockinette stitch · **tbl** = through the back loop · **tog** = together · **wyib** = with yarn in back of work · **wyif** = with yarn in front of work · **WS** = wrong side · **yo(s)** = yarn over(s)

### Publisher's Info

**Publisher:** Lana Grossa GmbH, Gaimersheim, [www.lanagrossa.com](http://www.lanagrossa.com)

**Photographer:** Sabrina Theissen