



www.lanagrossa.com

TOP · ABOUT BERLIN FUNKY
Design 06 – About Berlin Special 03

TOP · ABOUT BERLIN FUNKY

Design 06 – About Berlin Special 03



Size One size

Materials: 250 g of Lana Grossa **About Berlin Funky** (83% cotton, 17% polyamide; 115 m/50 g) in Grey (**col 4**). Size 5 mm needles; cable needle [cn].

Rib patt: On RS row, k1tbl, p1; on WS row, k1, p1tbl.

Three-stitch selvage: On RS row, k1, sl 1 pwise wyib, p1, work to last 3 sts, p1, sl 1 pwise wyib, k1. On WS row, sl 1 pwise wyif, p1, k1, work to last 3 sts, k1, p1, sl 1 pwise wyif.

Drop stitch patt: Work according to chart. Multiple of 11 + 10 + 6 selvage sts. Numbers at right edge of chart indicate RS rows, numbers at left edge of chart indicate WS rows. Work set-up row A once, rep rows 2 – 9 throughout, end with row Z. Work to patt rep, work sts between arrows for patt rep, work to end of chart.

Gauge: 13 sts and 25 rows = 10 x 10 cm in drop st patt on size 5 mm needles, after sts have been unravelled and piece has been blocked. Schematic shows measurements after sts have been unravelled.

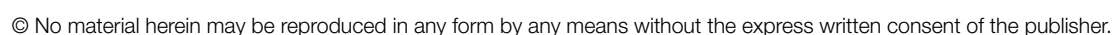
Top: Worked in one piece across shoulders, beginning at bottom edge of back. With size 5 mm needles cast on 71 sts. Next row (WS): * K1, p1tbl; rep from *, end k1. Cont in rib patt

as established until piece meas 8 cm from cast-on, ending with a WS row. Work set-up row A of drop st patt chart, then rep chart rows 2 – 9 until piece meas 54 cm from cast-on, ending with a WS row. Shape neck: Next row (RS): Patt over 32 sts, p2tog, sl next 2 sts to cn and hold in front of work, patt over next 2 sts, then work 2 sts from cn in patt, p1, patt to end. Divide work at center and work each side separately = 35 sts each side. Working three-st selvage at each neck edge, work even in patt until piece meas 20 cm from divide, ending with a WS row. Next row (RS): Patt over 33 sts, sl next 2 sts to cn and hold in front of work, patt over next 2 sts, M1, then work 2 sts from cn in patt, patt to end of row = 71 sts. Cont in patt across all sts until piece meas 66 cm from shoulder line, ending with a RS row. Work row Z of chart. Work in rib patt same as at beg of back for 8 cm. Bind off all sts in rib.

Sleeves: With size 5 mm needles cast on 43 sts. Next row (WS): * K1, p1tbl; rep from *, end k1. Cont in rib patt as established until piece meas 10 cm from cast-on. Bind off all sts.

Finishing: Pin pieces to measurements and block. Place markers 18 cm down from shoulders on front and back. Sew on sleeves between markers. Sew side and sleeve seams, leaving bottom 29 cm of side seams open for vents.

Design 06 – About Berlin Special 03



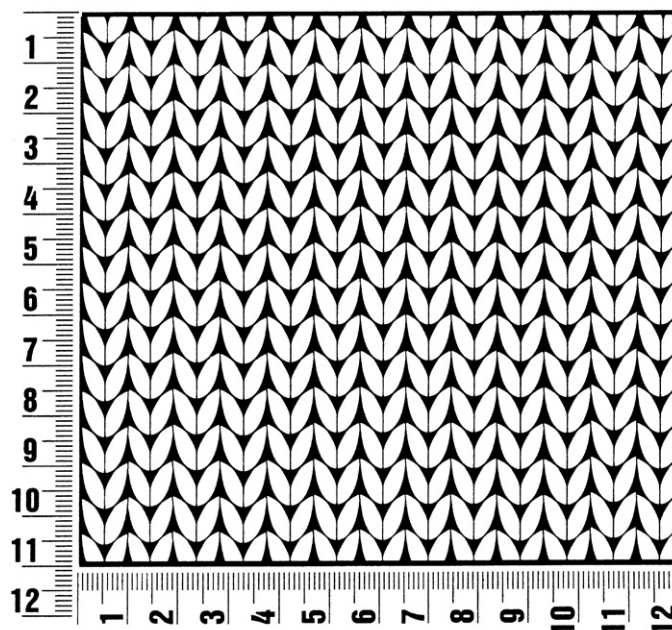
About Berlin Special 03

www.lanagrossa.com

Gauge Swatch

Before you begin ...

...make a gauge swatch. Use the recommended needles, yarns and pattern stitch for your gauge swatch. It should measure approx. 12 cm x 12 cm. Cast-on and bind-off rows, as well as selvage stitches should not be included in the measurement. Pin your swatch and block it as you would the finished pieces of the garment. Count stitches and rows over 10 cm. If your gauge swatch is too small, switch to larger needles. If your gauge swatch is too big, switch to smaller needles.



Abbreviations

beg = begin(ning) · **ch** = chain · **cont** = continue · **dec** = decreas(e)(ing) · **inc** = increas(e)(ing) · **k** = knit · **kwise** = as if to knit
meas = measures · **M1L** = lift strand between sts from front to back and knit this strand through the back loop · **M1R** = lift strand between sts from the back and knit this strand through the front loop · **patt** = pattern · **pm** = place marker · **p** = purl
pwise = as if to purl · **rem** = remain(ing) · **rep** = repeat(s) · **rev St st** = reverse stockinette stitch · **rnd(s)** = round(s) · **RS** = right side · **sc** = single crochet · **skp** = slip 1 stitch as if to knit, knit 1 stitch, pass slipped stitch over knitted stitch · **sk2p** = slip 1 stitch as if to knit, knit 2 together, pass slipped stitch over knitted stitch · **s2kp** = slip 2 stitches as if to knit, k 1 stitch, pass slipped stitches over knitted stitch · **sl** = slip · **st(s)** = stitch(es) · **St st** = stockinette stitch · **tbl** = through the back loop · **tog** = together · **wyib** = with yarn in back of work · **wyif** = with yarn in front of work · **WS** = wrong side · **yo(s)** = yarn over(s)

Publisher's Info

Publisher: Lana Grossa GmbH, Gaimersheim, www.lanagrossa.com

Photographer: Sabrina Theissen