



[www.lanagrossa.com](http://www.lanagrossa.com)

**JACKET .**  
**ABOUT BERLIN FUNKY & CERTO**  
Design 07 – About Berlin Special 03

# JACKET •

## ABOUT BERLIN FUNKY & CERTO

### Design 07 – About Berlin Special 03



**Size** 36/38 (40/42, 44/46, 48/50)

Instructions are given for first size. Figures in parenthesis refer to larger sizes. When only one figure is given, it applies to all sizes.

**Materials:** 300 (350, 400, 450) g of Lana Grossa **About Berlin Funky** (83% cotton, 17% polyamide; 115 m/50 g) in Jeans (col 5); 400 (450, 500, 550) g of Lana Grossa **Certo** (100% GOTS cotton; 115 m/50 g) in Grey Blue (col 8). Size 5 mm needles.

**Rib patt:** On RS row, k1tbl, p1; on WS row, k1, p1tbl.

**Half-brioche rib:** Work according to chart. Multiple of 2 + 1 + 4 selvage sts. Number at right edge of chart indicates RS row, numbers at left edge of chart indicate WS rows. Work to patt rep, work 2 sts between arrows for patt rep, work to end of chart. First 2 sts and last 2 sts are worked as selvage sts. Work WS set-up row 0 once, then rep rows 1 and 2. Note: 1 stitch and 1 yo are treated as 1 stitch.

**Gauge:** 15.5 sts and 32 rows = 10 x 10 cm in half-brioche rib with size 5 mm needles and Certo.

**Stripe sequence:** Work 10 rows each with About Berlin Funky and Certo alternately throughout.

**Back:** With size 5 mm needles and Certo cast on 81 (87, 93, 99) sts. Next row (WS): \* K1, p1tbl; rep from \*, end k1. Cont in rib patt as established for 9 more rows and piece meas 4 cm from cast-on, ending with a RS row. Drop Certo, join About Berlin Funky. Work WS set-up row 0 of half-brioche chart. Cont to foll chart and work stripe sequence until piece meas 50 cm from cast-on, ending with a WS row. Shape underarm: Cont in patt, inc 1 st at each end of next 3 RS rows. To increase, M1, 2 sts in from each edge = 87 (93, 99, 105) sts. Next row (WS): 2 selvage sts as established, 1 st in rev St st (k on WS, p on RS), half-brioche rib as established to last 3 sts, 1 st in rev St st (k on WS, p on RS), 2 selvage sts as established. Work in patt as set by last row for 19 (20, 21, 22) cm, ending with a WS row. Shape shoulders and neck: At each shoulder edge bind off 5 sts 1 (4, 6, 7) time(s), 4 (4, 4, 6) sts 7 (4, 2, 1) time(s). At same time, when piece meas 3 cm from beg of shoulder shaping, shape neck as foll: Next row

(RS): Bind off center 11 (11, 13, 13) sts. Working each side separately, bind off 3 sts at each neck edge 1 time, 2 sts 1 time.

**Right front:** With size 5 mm needles and Certo cast on 41 (45, 47, 51) sts. Next row (WS): \* K1, p1tbl; rep from \*, end k1. Cont in rib patt as established for 9 more rows and piece meas 4 cm from cast-on. At same time, shape front edge as foll: Inc 1 st at beg of every RS row = 46 (50, 52, 56) sts. To increase, M1, 2 sts in from right edge. Work increased sts into rib patt. Drop Certo, join About Berlin Funky. Work WS set-up row 0 of half-brioche chart. Cont to foll chart, work stripe sequence and cont to shape front edge as foll: Inc 1 st at beg of next 21 RS rows = 67 (71, 73, 77) sts. Work increased sts into half-brioche rib. Work even until piece meas 50 cm from cast-on, ending with a WS row. Shape front neck and underarm: Next row (RS): 2 selvage sts as established, p1, sl 1 kwise, p1, pass slipped st over purled st, patt to last 2 sts, M1, 2 selvage sts as established. Cont in patt, cont to work front neck decs [every foll RS row 1 time, then every alt RS row 1 time] 14 (14, 15, 15) times, then every foll RS row once more, cont to work underarm incs every foll RS row 2 (1, 3, 2) time(s) = 40 (43, 45, 48) sts after neck and underarm shaping is complete. At same time, when same length as back to shoulder, shape shoulder at right edge same as for back = 7 sts rem for neckband. Cont in patt across neckband sts for 7 (7, 8, 8) cm. Bind off all sts.

**Left front:** Work same as right front, reversing all shaping and working decs for neck shaping on RS rows as foll: Patt to last 5 sts, k2tog, p1, 2 selvage sts as established.

**Sleeves:** With size 5 mm needles and Certo cast on 57 (59, 63, 65) sts. Next row (WS): \* K1, p1tbl; rep from \*, end k1. Cont in rib patt as established for 9 more rows and piece meas 4 cm from cast-on, ending with a RS row. Drop Certo, join About Berlin Funky. Work WS set-up row 0 of half-brioche chart. Cont to foll chart and work stripe sequence until piece meas 30 cm from cast-on. Bind off all sts.

**Finishing:** Sew shoulder seams. Sew left and right neckband tog, then sew neckband edge to back neck. Sew on sleeves. Sew side and sleeve seams.

# JACKET ·

## ABOUT BERLIN FUNKY & CERTO

### Design 07 – About Berlin Special 03



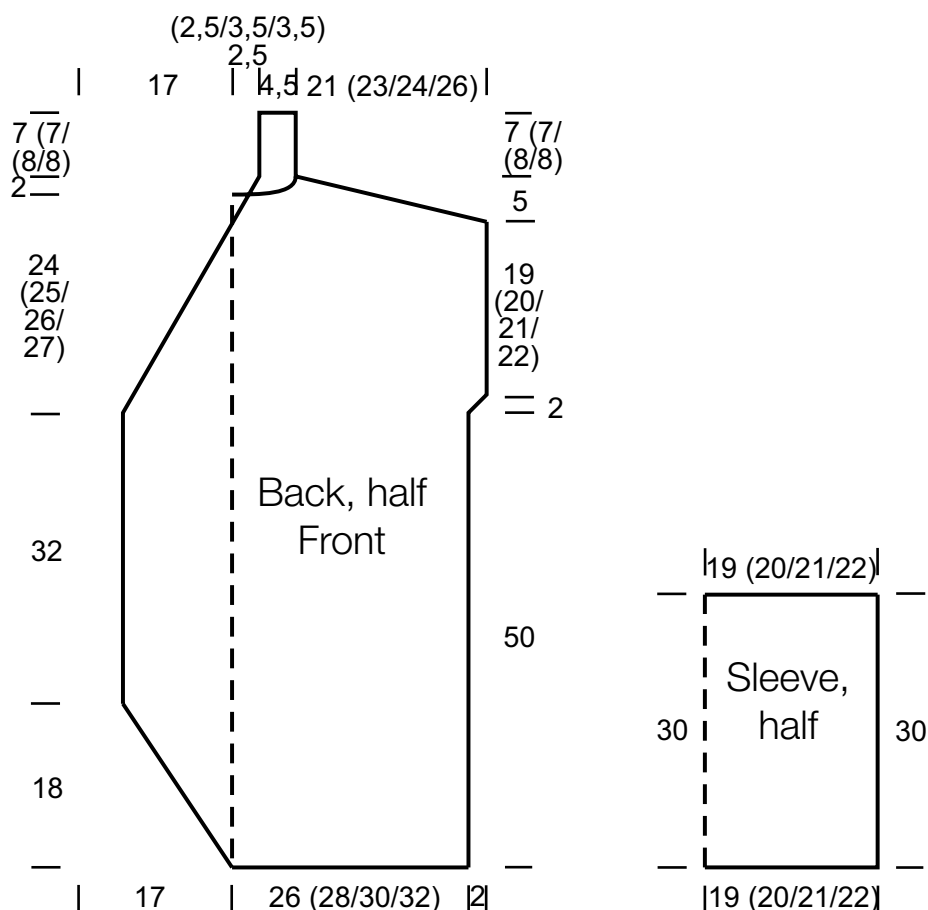
#### Chart

2	-	V	▲	-	▲	-	▲	-	▲	V	-	
	△		⊗		⊗		⊗		⊗		△	1
0	-		-		-		-		-		-	

↑ ↑  
patt rep

#### Chart key:

- = k1
- ▢ = p1
- ⊗ = make a yo, then sl next st pwise
- ▲ = ktog slipped st with its yo
- ▼ = sl 1 pwise wyif
- △ = sl 1 pwise wyib



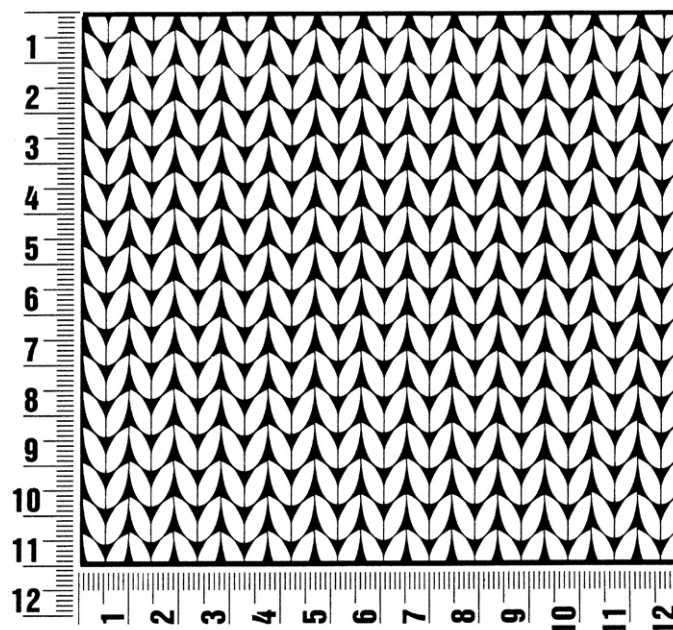
# About Berlin Special 03

www.lanagrossa.com

## Gauge Swatch

### Before you begin ...

...make a gauge swatch. Use the recommended needles, yarns and pattern stitch for your gauge swatch. It should measure approx. 12 cm x 12 cm. Cast-on and bind-off rows, as well as selvage stitches should not be included in the measurement. Pin your swatch and block it as you would the finished pieces of the garment. Count stitches and rows over 10 cm. If your gauge swatch is too small, switch to larger needles. If your gauge swatch is too big, switch to smaller needles.



## Abbreviations

**beg** = begin(ning) · **ch** = chain · **cont** = continue · **dec** = decreas(e)(ing) · **inc** = increas(e)(ing) · **k** = knit · **kwise** = as if to knit  
**meas** = measures · **M1L** = lift strand between sts from front to back and knit this strand through the back loop · **M1R** = lift strand between sts from the back and knit this strand through the front loop · **patt** = pattern · **pm** = place marker · **p** = purl  
**pwise** = as if to purl · **rem** = remain(ing) · **rep** = repeat(s) · **rev St st** = reverse stockinette stitch · **rnd(s)** = round(s) · **RS** = right side · **sc** = single crochet · **skp** = slip 1 stitch as if to knit, knit 1 stitch, pass slipped stitch over knitted stitch · **sk2p** = slip 1 stitch as if to knit, knit 2 together, pass slipped stitch over knitted stitch · **s2kp** = slip 2 stitches as if to knit, k 1 stitch, pass slipped stitches over knitted stitch · **sl** = slip · **st(s)** = stitch(es) · **St st** = stockinette stitch · **tbl** = through the back loop · **tog** = together · **wyib** = with yarn in back of work · **wyif** = with yarn in front of work · **WS** = wrong side · **yo(s)** = yarn over(s)

### Publisher's Info

**Publisher:** Lana Grossa GmbH, Gaimersheim, [www.lanagrossa.com](http://www.lanagrossa.com)

**Photographer:** Sabrina Theissen