



www.lanagrossa.com

**PULLOVER · FOURSEASON,
ABOUT BERLIN FUNKY & PIMA**
Design 14 – About Berlin Special 03

PULLOVER · FOURSEASON, ABOUT BERLIN FUNKY & PIMA

Design 14 – About Berlin Special 03



Size 36/38 (40/42, 44/46)

Instructions are given for first size. Figures in parenthesis refer to larger sizes. When only one figure is given, it applies to all sizes.

Materials: 150 g of Lana Grossa **Fourseason** (45% superfine organic Merino wool, 40% organic cotton, 15% recycled cashmere; 105 m/50 g) in Pink (**col 13**); 100 g of Lana Grossa **About Berlin Funky** (83% cotton, 17% polyamide; 115 m/50 g) in White (**col 1**) and 50 g each in Cream (**col 2**) and Black (**col 12**); 100 g each of Lana Grossa **Pima** (100% Pima cotton; 125 m/50 g) in Yellow (**col 11**) and White (**col 23**). Size 3.5 and 4.5 mm needles; size 3.5 mm circular needle, 40 cm long.

Rib patt: K1, p1.

St st: K on RS, p on WS.

Garter st: K every row.

Selvage stitches: On RS row: Sl first st kwise, k last st; on WS row: Sl first st pwise, p last st.

Gauges: 17 sts and 30 rows = 10 x 10 cm in garter st with size 4.5 mm needles and Fourseasons; 19.5 sts and 36 rows = 10 x 10 cm in garter st with size 3.5 mm needles and Pima.

Pattern, back and front:

I) 15 rows (6 cm) in rib patt with size 3.5 mm needles and Fourseasons in Pink.

II) 30 rows (10 cm) in garter st with size 4.5 mm needles and Fourseasons in Pink.

III) 18 rows (7 cm) in St st with size 3.5 mm needles and About Berlin Funky in White.

IV) 22 rows (6 cm) in garter st with size 3.5 mm needles and Pima in Yellow.

V) 10 rows (4 cm) in St st with size 3.5 mm needles and About Berlin Funky in Cream.

VI) 22 rows (6 cm) in garter st with size 3.5 mm needles and Pima in White.

VII) 10 rows (4 cm) in St st with size 3.5 mm needles and About Berlin Funky in Black.

VIII) 22 rows (6 cm) in garter st with size 3.5 mm needles and Pima in White.

Pattern, sleeves:

IX) 19 rows (7 cm) in rib patt with size 3.5 mm needles and Fourseasons in Pink.

X) 38 rows (13 cm) in garter st with size 4.5 mm needles and Fourseasons in Pink.

XI) 26 rows (10 cm) in St st with size 3.5 mm needles and About Berlin Funky in White.

XII) 30 rows (9 cm) in garter st with size 3.5 mm needles and Pima in Yellow.

XIII) 16 rows (6 cm) in St st with size 3.5 mm needles and About Berlin Funky in Cream.

Back: With size 3.5 mm needles and Fourseasons in Pink cast on 96 (103, 110) sts. Beg with a WS row work first 45 rows of pattern, back. Next row (RS): Work next row of patt, inc 16 (17, 18) sts evenly across row = 112 (120, 128) sts. To inc, M1 after 3rd (4, 5)th st, then M1 after every 6th st 15 (16, 17) times. Cont in patt until piece meas 46 cm from cast-on, ending with 6 rows in garter st with Pima in White (VIII). Shape shoulders: Cont in patt and at each shoulder edge bind off 6 sts 1 time, 4 sts 7 times (5 sts 6 times, 4 sts 2 times / 6 sts 2 times, 5 sts 6 times). Bind off rem 44 sts.

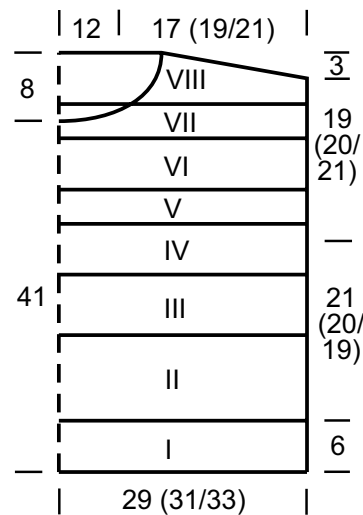
Front: Work same as back until piece meas 41 cm from cast-on, ending with a WS row. Shape neck: Next row (RS): Bind off center 18 sts. Working each side separately, bind off 3 sts at each neck edge 1 time, 2 sts 2 times, 1 st 3 times, [work 3 rows even, bind off 1 st] 3 times and when same length as back to shoulders, shape shoulders same as for back.

Sleeves: With size 3.5 mm needles and Fourseasons in Pink cast on 42 (44, 46) sts. Beg with a WS row work first 19 rows of pattern, sleeves. Next row (RS): Work next row of patt, inc 20 (22, 24) sts evenly across row = 62 (66, 70) sts. Work next 37 rows of patt. Next row (RS): Work next row of patt, inc 12 sts evenly across row = 74 (78, 82) sts. To inc, M1 after 0 (5, 6)th st, then M1 after every 3rd st 12 (11, 11) times. Work to end of patt. Bind off all sts.

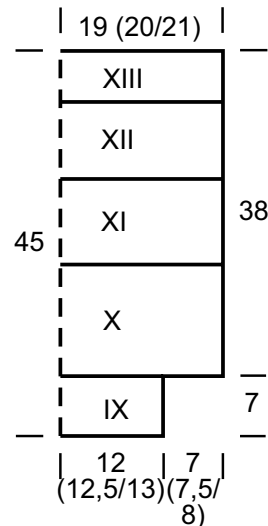
Finishing: Sew shoulder seams. **Neckband:** With size 3.5 mm circular needle and Pima in White, pick up and k 114 sts evenly around neck edge. Place beg of rnd marker and join for working in rnds. Work rib patt in rnds for 4 cm. Bind off all sts in rib. Place markers 19 (20, 21) cm down from shoulders on front and back. Sew on sleeves between markers. Sew side and sleeve seams.

PULLOVER · FOURSEASON, ABOUT BERLIN FUNKY & PIMA

Design 14 – About Berlin Special 03



Back and front,
half



Sleeve, half

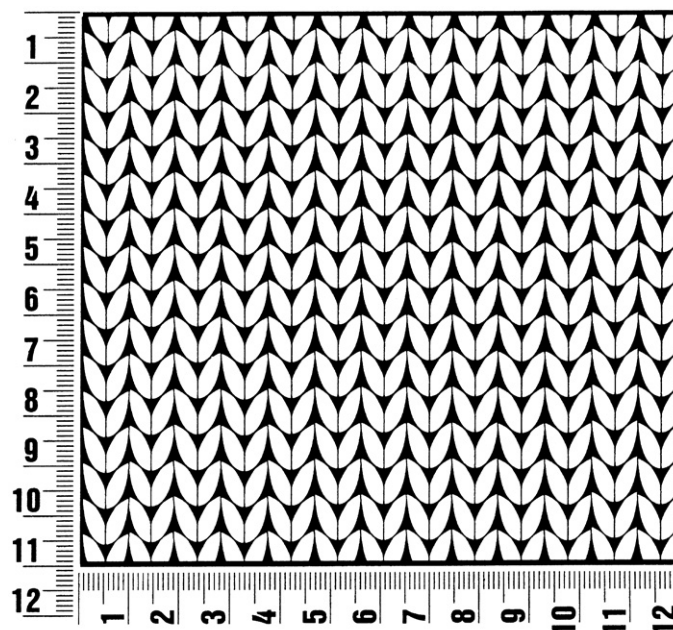
About Berlin Special 03

www.lanagrossa.com

Gauge Swatch

Before you begin ...

...make a gauge swatch. Use the recommended needles, yarns and pattern stitch for your gauge swatch. It should measure approx. 12 cm x 12 cm. Cast-on and bind-off rows, as well as selvage stitches should not be included in the measurement. Pin your swatch and block it as you would the finished pieces of the garment. Count stitches and rows over 10 cm. If your gauge swatch is too small, switch to larger needles. If your gauge swatch is too big, switch to smaller needles.



Abbreviations

beg = begin(ning) · **ch** = chain · **cont** = continue · **dec** = decreas(e)(ing) · **inc** = increas(e)(ing) · **k** = knit · **kwise** = as if to knit
meas = measures · **M1L** = lift strand between sts from front to back and knit this strand through the back loop · **M1R** = lift strand between sts from the back and knit this strand through the front loop · **patt** = pattern · **pm** = place marker · **p** = purl
pwise = as if to purl · **rem** = remain(ing) · **rep** = repeat(s) · **rev St st** = reverse stockinette stitch · **rnd(s)** = round(s) · **RS** = right side · **sc** = single crochet · **skp** = slip 1 stitch as if to knit, knit 1 stitch, pass slipped stitch over knitted stitch · **sk2p** = slip 1 stitch as if to knit, knit 2 together, pass slipped stitch over knitted stitch · **s2kp** = slip 2 stitches as if to knit, k 1 stitch, pass slipped stitches over knitted stitch · **sl** = slip · **st(s)** = stitch(es) · **St st** = stockinette stitch · **tbl** = through the back loop · **tog** = together · **wyib** = with yarn in back of work · **wyif** = with yarn in front of work · **WS** = wrong side · **yo(s)** = yarn over(s)

Publisher's Info

Publisher: Lana Grossa GmbH, Gaimersheim, www.lanagrossa.com

Photographer: Sascha Heintze