



www.lanagrossa.com

TOP · FOURSEASON

Design 17 – About Berlin Special 03

TOP · FOURSEASON

Design 17 – About Berlin Special 03



Size 36/38 (40/42, 44/46)

Instructions are given for first size. Figures in parenthesis refer to larger sizes. When only one figure is given, it applies to all sizes.

Materials: 250 (300, 350) g of Lana Grossa **Fourseason** (45% extrafine organic Merino wool, 40% organic cotton, 15% recycled cashmere; 105 m/50 g) in Yellow (**col 8**). Size 3.5 and 4.5 mm needles; size 3.5 mm circular needle, 40 cm long.

Half-brioche rib: Work according to chart. Multiple of 2 + 1. Numbers at left edge of chart indicate WS rows, number at right edge of chart indicates RS row. Work to patt rep, work 2 sts between arrows for patt rep, work to end of chart. Work WS set-up row 0 once, then rep rows 1 and 2. **Note:** 1 stitch and 1 yo are treated as 1 stitch.

Full brioche rib: Work according to chart. Multiple of 4. Numbers at left edge of chart indicate WS rows, number at right edge of chart indicates RS row. Work to patt rep, work 4 sts between arrows for patt rep, work to end of chart. Work WS set-up row 0 once, then rep rows 1 and 2. **Note:** 1 stitch and 1 yo are treated as 1 stitch.

Gauge: 20 sts and 27 rows = 10 x 10 cm in half-brioche rib on size 4.5 mm needles.

Back: With size 3.5 mm needles cast on 93 (101, 109) sts. Next row (WS): * K1, p1; rep from *, end k1. Cont in rib patt as established for 5 more rows, ending with a RS row. Work WS

set-up row 0 of half-brioche rib chart. Change to size 4.5 mm needles. Rep rows 1 and 2 of half-brioche rib chart until piece meas 30 cm from cast-on, ending with a WS row. Shape armholes: Bind off 4 sts at beg of next 2 rows. Dec 1 st at each end of next 4 RS rows = 77 (85, 93) sts. To dec, k2tog, 1 st in from each edge. Place marker at each edge. Work even until armhole meas 18 (19.5, 21) cm, ending with a WS row. Shape shoulders and neck: At each shoulder edge bind off 5 sts 2 times, 4 sts 2 times (6 sts 2 times, 5 sts 2 times / 7 sts 2 times, 6 sts 2 times. **At same time**, on first row of shoulder shaping, shape neck as foll: Bind off center 29 sts. Working each side separately, bind off 3 sts at each neck edge 1 time, 2 sts 1 time, 1 st 1 time.

Front: Work same as back until piece meas 41 (42.5, 44) cm from cast-on, ending with a WS row. Shape neck and shoulders: Next row (RS): Bind off center 19 sts. Working each side separately, bind off 3 sts at each neck edge 2 times, 2 sts 2 times, 1 st 1 time and when same length as back to shoulders, shape shoulders same as for back.

Finishing: Sew shoulder seams. **Neckband:** With size 3.5 mm circular needle, pick up and k 110 sts evenly around neck edge. Place beg of rnd marker and join for working in rnds. K1, p1 around until band meas 2.5 cm from pick-up rnd. Bind off all sts in rib. **Armhole bands:** With size 3.5 mm circular needle and RS facing, pick up and k 84 (88, 92) sts evenly along armhole edge between markers (see * on schematic). Work WS set-up row 0 of full brioche chart, then rep rows 1 and 2 until band meas 6 cm from pick-up row. Bind off all sts. Sew side seams.

Half-brioche rib chart

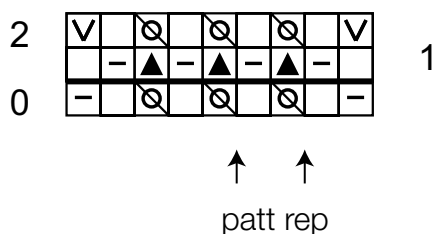
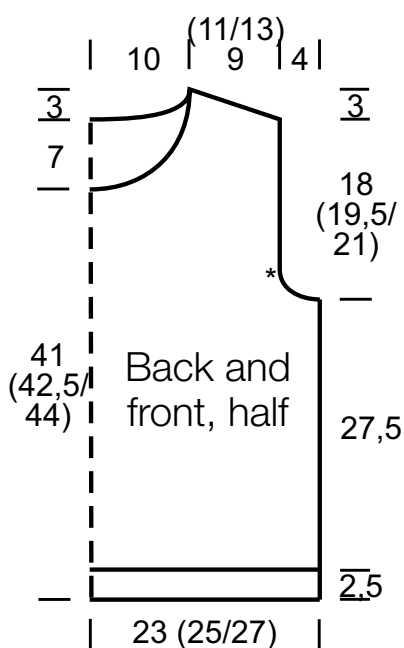
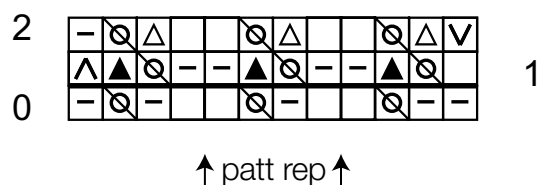


Chart key:

- = k1
- = p1
- ⊗ = make a yo, then sl next st pwise
- ▲ = ktog slipped st with its yo
- △ = ptog slipped st with its yo
- △ = sl 1 pwise wyib
- ▽ = sl 1 pwise wyif

Full brioche rib chart



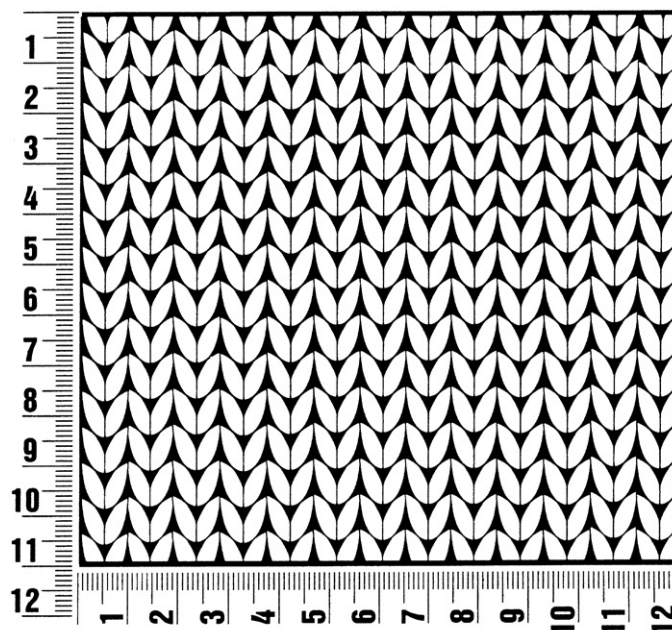
About Berlin Special 03

www.lanagrossa.com

Gauge Swatch

Before you begin ...

...make a gauge swatch. Use the recommended needles, yarns and pattern stitch for your gauge swatch. It should measure approx. 12 cm x 12 cm. Cast-on and bind-off rows, as well as selvage stitches should not be included in the measurement. Pin your swatch and block it as you would the finished pieces of the garment. Count stitches and rows over 10 cm. If your gauge swatch is too small, switch to larger needles. If your gauge swatch is too big, switch to smaller needles.



Abbreviations

beg = begin(ning) · **ch** = chain · **cont** = continue · **dec** = decreas(e)(ing) · **inc** = increas(e)(ing) · **k** = knit · **kwise** = as if to knit
meas = measures · **M1L** = lift strand between sts from front to back and knit this strand through the back loop · **M1R** = lift strand between sts from the back and knit this strand through the front loop · **patt** = pattern · **pm** = place marker · **p** = purl
pwise = as if to purl · **rem** = remain(ing) · **rep** = repeat(s) · **rev St st** = reverse stockinette stitch · **rnd(s)** = round(s) · **RS** = right side · **sc** = single crochet · **skp** = slip 1 stitch as if to knit, knit 1 stitch, pass slipped stitch over knitted stitch · **sk2p** = slip 1 stitch as if to knit, knit 2 together, pass slipped stitch over knitted stitch · **s2kp** = slip 2 stitches as if to knit, k 1 stitch, pass slipped stitches over knitted stitch · **sl** = slip · **st(s)** = stitch(es) · **St st** = stockinette stitch · **tbl** = through the back loop · **tog** = together · **wyib** = with yarn in back of work · **wyif** = with yarn in front of work · **WS** = wrong side · **yo(s)** = yarn over(s)

Publisher's Info

Publisher: Lana Grossa GmbH, Gaimersheim, www.lanagrossa.com

Photographer: Sascha Heintze