



www.lanagrossa.com

PONCHO · PIMA

Design 19 – About Berlin Special 03

PONCHO • PIMA

Design 19 – About Berlin Special 03



Size One size

Materials: 500 g of Lana Grossa **Pima** (100% Pima cotton; 125 m/50 g) in Ecru (**col 22**). Size 3.5 mm needles; size 3.5 mm circular needle.

Full-fashion decrease: At beg of RS row, selvage st, skp; at end of RS row, work to last 3 sts, k2tog, selvage st.

Selvage stitches: On every row: Sl first st kwise, k last st.

Diamond lace: Work according to chart. Multiple of 16 + 1 + 2 selvage sts. Numbers at right edge of chart indicate RS rows; on WS rows, work sts as they appear, purl all yos. Work to patt rep, work 16 sts between arrows for patt rep, work to end of chart. Chart shows 2 patt reps. Rep rows 1 – 32 for diamond lace.

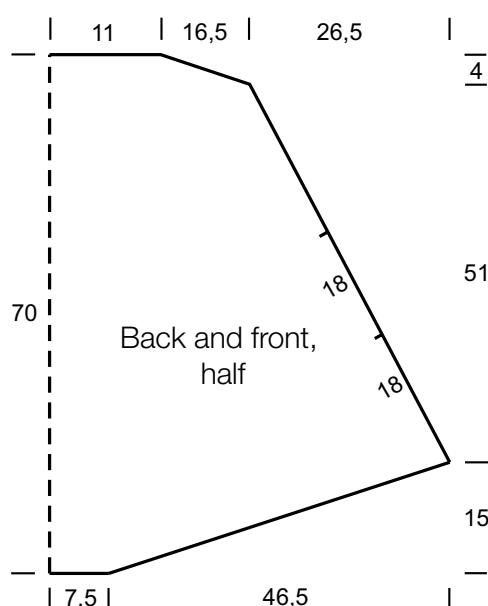
Decorative bind-off: * K1, k2tog tbl, sl both sts back to left needle; rep from * to last 2 sts, k2tog tbl. Cut yarn and draw through last st on needle.

Gauge: 18 sts and 28 rows = 10 x 10 cm in diamond lace on size 3.5 mm needles.

Back: With size 4 mm needles cast on 27 sts. Purl 1 WS row. Work according to hem shaping chart, continuing to cast on 4 sts at beg of every row until 195 sts are on the needle = 42 rows worked and 168 sts cast on. Work newly cast-on sts into diamond lace patt. Work 2 rows even. Cont in patt and working full-fashion dec, dec 1 st at each end of next RS row, * then dec 1 st at each end of every alt RS row 1 time, then every foll RS row 1 time, rep from * until 99 sts rem and piece meas approx. 66 cm from cast-on, measured along center back. Work 1 WS row. Shape shoulders: At each shoulder edge bind off 5 sts 6 times. Bind off rem 39 sts, using the decorative bind-off method.

Front: Work same as back.

Finishing: Front hem: With size 3.5 mm circular needle and RS facing, pick up and k 195 sts evenly along bottom edge of front. Purl 1 WS row. Bind off all sts, using the decorative bind-off method. Back hem: Work same as front hem along bottom edge of back. Sew shoulder seams. Armhole edging: With size 3.5 mm needles and RS facing, pick up and k 35 sts evenly along side edge between - and - on schematic. Purl 1 WS row. Bind off all sts, using the decorative bind-off method. Sew side seams.



Hem shaping chart

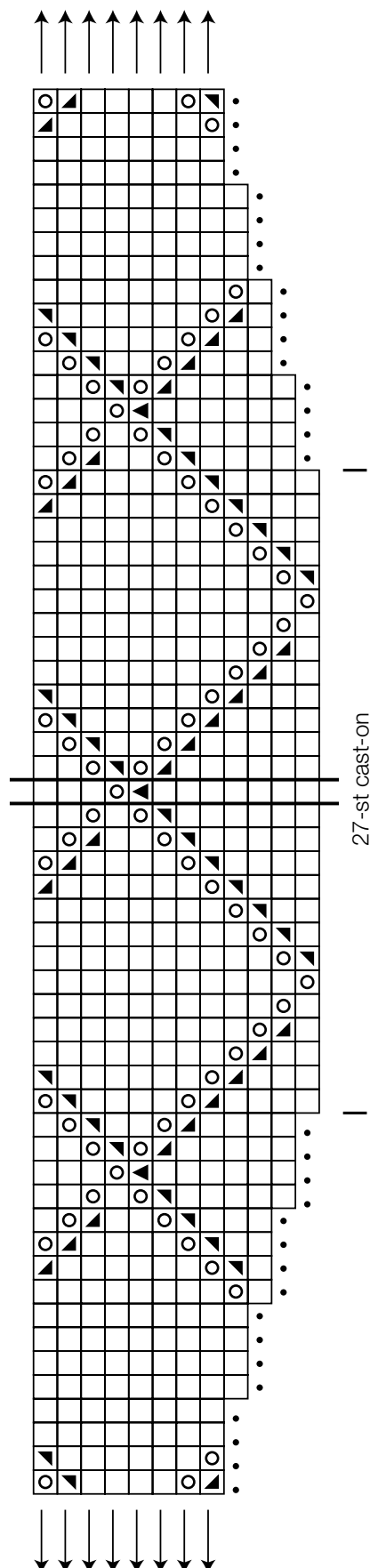


Chart key:

□ = k1 on RS, p1 on WS

○ = yo on RS, p1 on WS

◼ = k2tog

◻ = skp: sl 1 kwise, k1, pass slipped st over knitted st

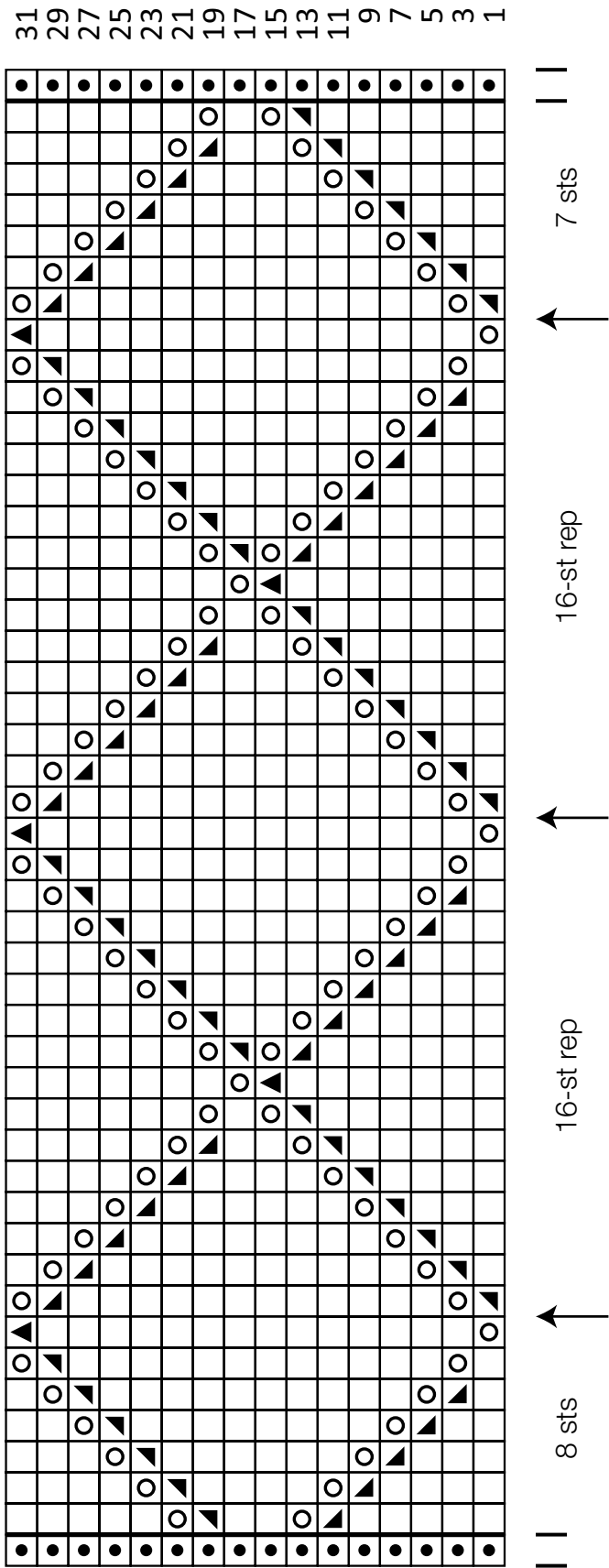
◼ = sk2p: sl 1 kwise, k2tog, pass slipped st over knitted st

◼ = selvage st

• = cast on 1 st



Diamond lace chart



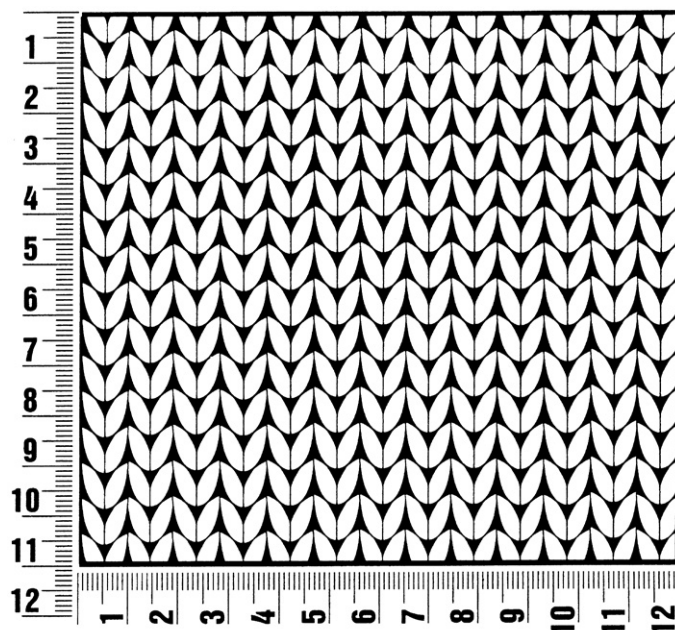
About Berlin Special 03

www.lanagrossa.com

Gauge Swatch

Before you begin ...

...make a gauge swatch. Use the recommended needles, yarns and pattern stitch for your gauge swatch. It should measure approx. 12 cm x 12 cm. Cast-on and bind-off rows, as well as selvage stitches should not be included in the measurement. Pin your swatch and block it as you would the finished pieces of the garment. Count stitches and rows over 10 cm. If your gauge swatch is too small, switch to larger needles. If your gauge swatch is too big, switch to smaller needles.



Abbreviations

beg = begin(ning) · **ch** = chain · **cont** = continue · **dec** = decreas(e)(ing) · **inc** = increas(e)(ing) · **k** = knit · **kwise** = as if to knit
meas = measures · **M1L** = lift strand between sts from front to back and knit this strand through the back loop · **M1R** = lift strand between sts from the back and knit this strand through the front loop · **patt** = pattern · **pm** = place marker · **p** = purl
pwise = as if to purl · **rem** = remain(ing) · **rep** = repeat(s) · **rev St st** = reverse stockinette stitch · **rnd(s)** = round(s) · **RS** = right side · **sc** = single crochet · **skp** = slip 1 stitch as if to knit, knit 1 stitch, pass slipped stitch over knitted stitch · **sk2p** = slip 1 stitch as if to knit, knit 2 together, pass slipped stitch over knitted stitch · **s2kp** = slip 2 stitches as if to knit, k 1 stitch, pass slipped stitches over knitted stitch · **sl** = slip · **st(s)** = stitch(es) · **St st** = stockinette stitch · **tbl** = through the back loop · **tog** = together · **wyib** = with yarn in back of work · **wyif** = with yarn in front of work · **WS** = wrong side · **yo(s)** = yarn over(s)

Publisher's Info

Publisher: Lana Grossa GmbH, Gaimersheim, www.lanagrossa.com

Photographer: Sascha Heintze